

# KD-Validated Anti-ACTL6A Rabbit Polyclonal Antibody



**Catalog #: 64988**

## Aliases

ACTL6A; Actin Like 6A; BAF53A; INO80K; BRG1-Associated Factor 53A; INO80 Complex Subunit K; SMARCN1; Actl6; Arp4; 53 KDa BRG1-Associated Factor A; Actin-Related Protein Baf53a; BAF Complex 53 KDa Subunit; Actin-Related Protein 4; Actin-Like Protein 6A; ArpNbeta; BAF53; HArpN Beta; ARPN-BETA

## Background

Gene Name: ACTL6A

NCBI Gene Entry: [86](#)

UniProt Entry: [O96019](#)

## Application Information

Molecular Weight: Predicted, 47 kDa; observed, 47 kDa

Clonality: Rabbit polyclonal antibody

Species Reactivity: Human, mouse, rat

Applications Tested: Western blotting (WB)

## Immunogen

A synthesized peptide derived from human BAF53A

## Isotype

Rabbit IgG

## Storage Buffer

Supplied in PBS (pH 7.4) containing 50% glycerol, and 0.02% sodium azide.

## Storage

Store at -20 °C for one year.

## Recommended Dilutions

Western Blotting (WB): 1:500-1:2,500

**Note:** This product is for research use only.

## Validation Data

---

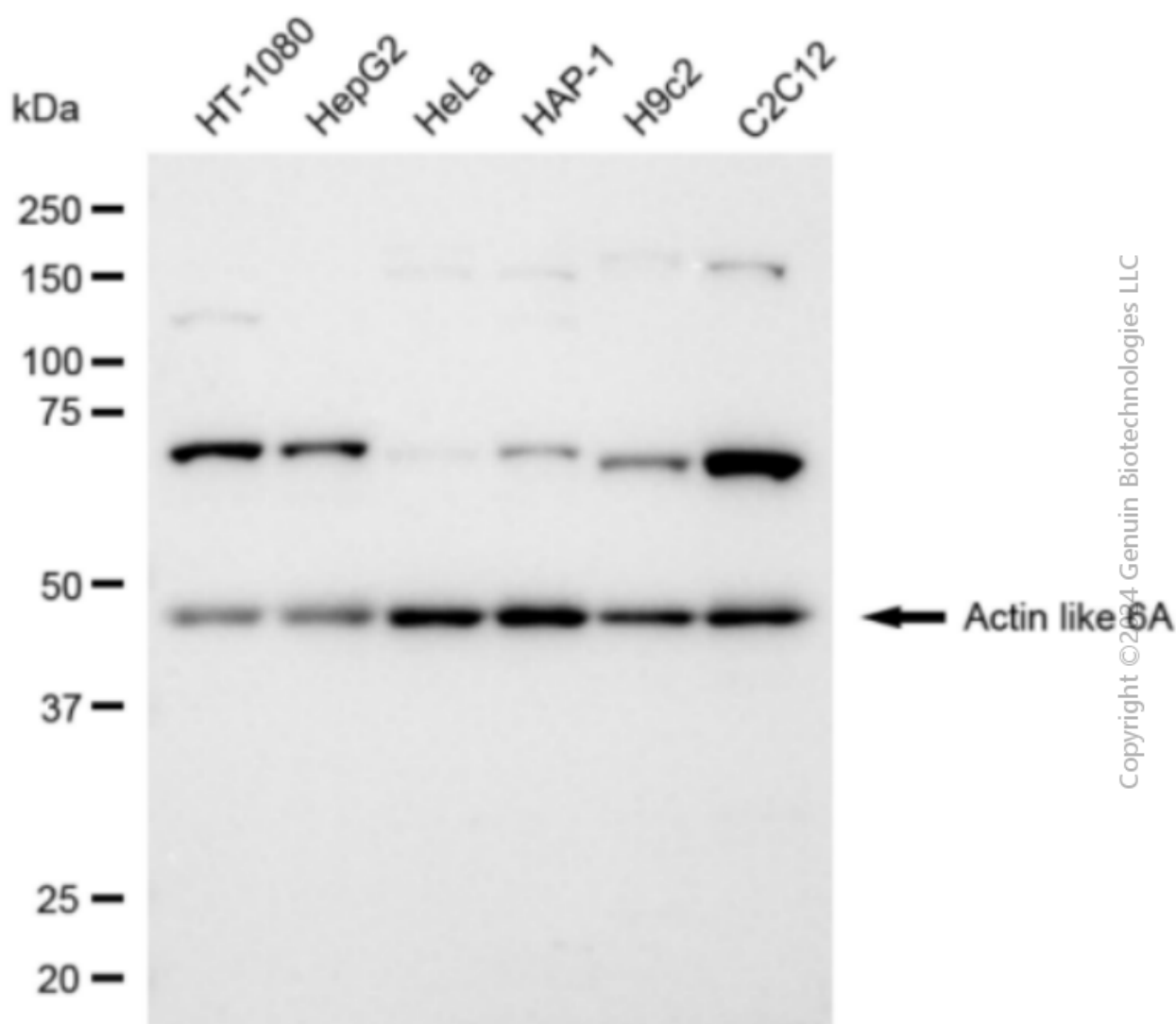
### SUPPORT

SUPPORT@GENUINBIOTECH.COM  
TEL: +1-540-855-7041

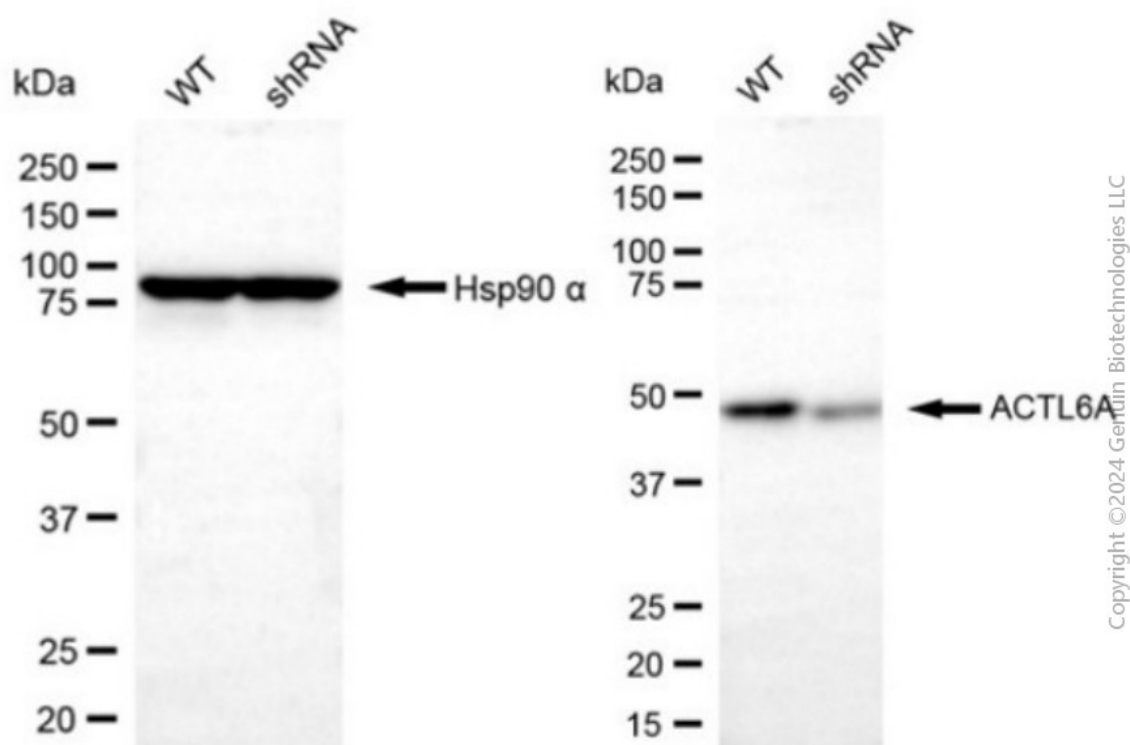
### ORDERS

SALES@GENUINBIOTECH.COM  
FAX: +1-540-855-7041

[WWW.GENUINBIOTECH.COM](http://WWW.GENUINBIOTECH.COM)



Western blotting analysis using anti-actin like 6A antibody (Cat#64988). Total cell lysates (30 µg) from various cell lines were loaded and separated by SDS-PAGE. The blot was incubated with anti-actin like 6A antibody (Cat#64988, 1:2,500) and HRP-conjugated goat anti-rabbit secondary antibody (Cat#201, 1:20,000) respectively. Image was developed using FeQ™ ECL Substrate Kit (Cat#226).



Western blotting analysis using anti-actin like 6A antibody (Cat #64988). Actin like 6A expression in wild-type (WT) and actin like 6A (ACTL6A) shRNA knockdown (KD) HeLa cells with 10  $\mu$ g of total cell lysates. Hsp90  $\alpha$  serves as a loading control. The blot was incubated with anti-actin like 6A antibody (Cat #64988, 1:2,500) and HRP-conjugated goat anti-rabbit secondary antibody (Cat #201, 1:20,000) respectively. Image was developed using FeQ™ ECL Substrate Kit (Cat #226).