

# KD-Validated Anti-CTBP2 Rabbit Polyclonal Antibody



**Catalog #: 64989**

## Aliases

CTBP2; C-Terminal Binding Protein 2; Ribeye; C-Terminal-Binding Protein 2; CtBP2

## Background

Gene Name: CTBP2

NCBI Gene Entry: [1488](#)

UniProt Entry: [P56545](#)

## Application Information

Molecular Weight: Predicted, 49 kDa; observed, 48 kDa

Clonality: Rabbit polyclonal antibody

Species Reactivity: Human, mouse, rat

Applications Tested: Western blotting (WB)

## Immunogen

A synthesized peptide derived from human CTBP2

## Isotype

Rabbit IgG

## Storage Buffer

Supplied in PBS (pH 7.4) containing 50% glycerol, and 0.02% sodium azide.

## Storage

Store at -20 °C for one year.

## Recommended Dilutions

Western Blotting (WB): 1:500-1:2,500

**Note:** This product is for research use only.

## Validation Data

---

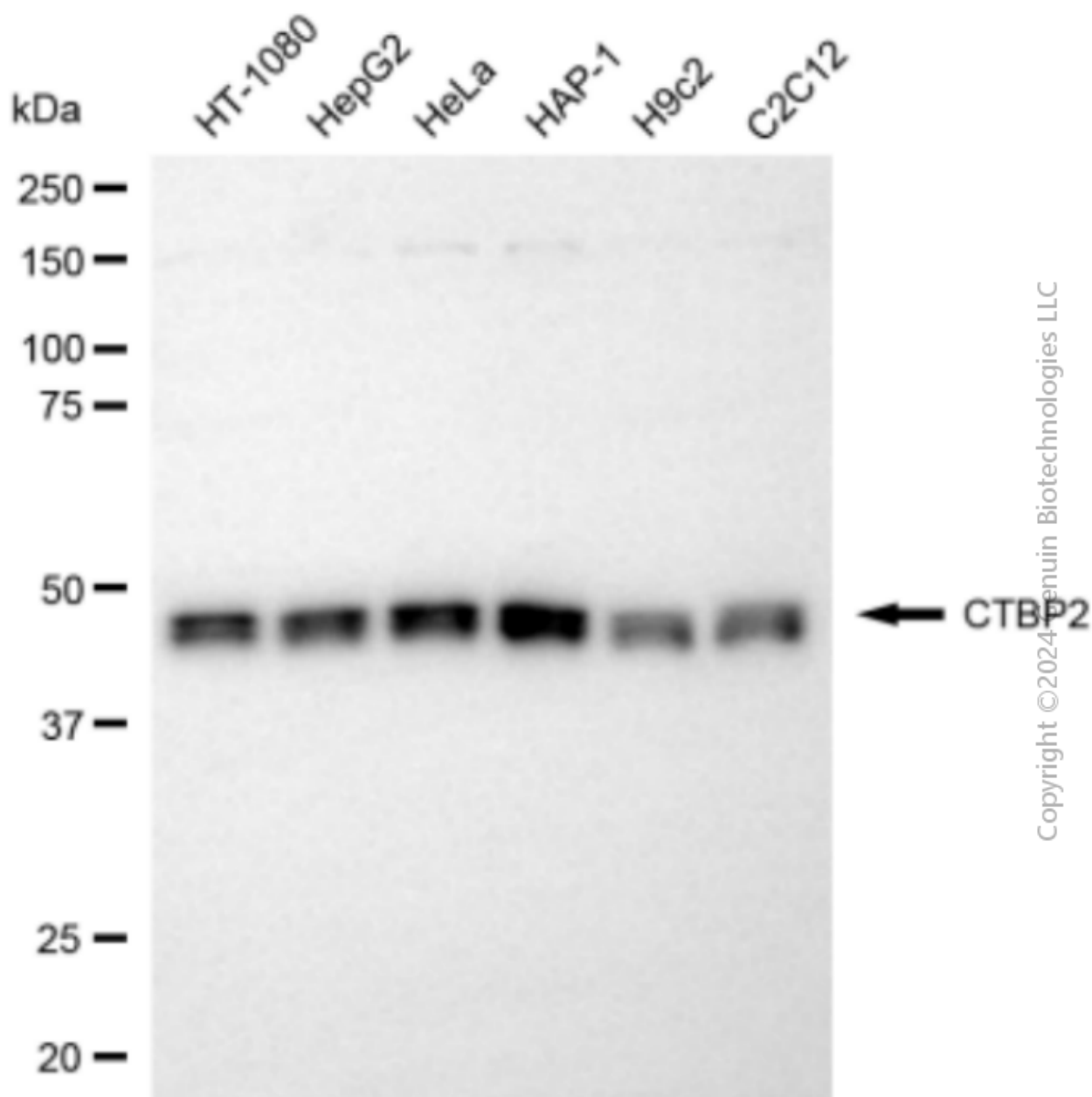
### SUPPORT

SUPPORT@GENUINBIOTECH.COM  
TEL: +1-540-855-7041

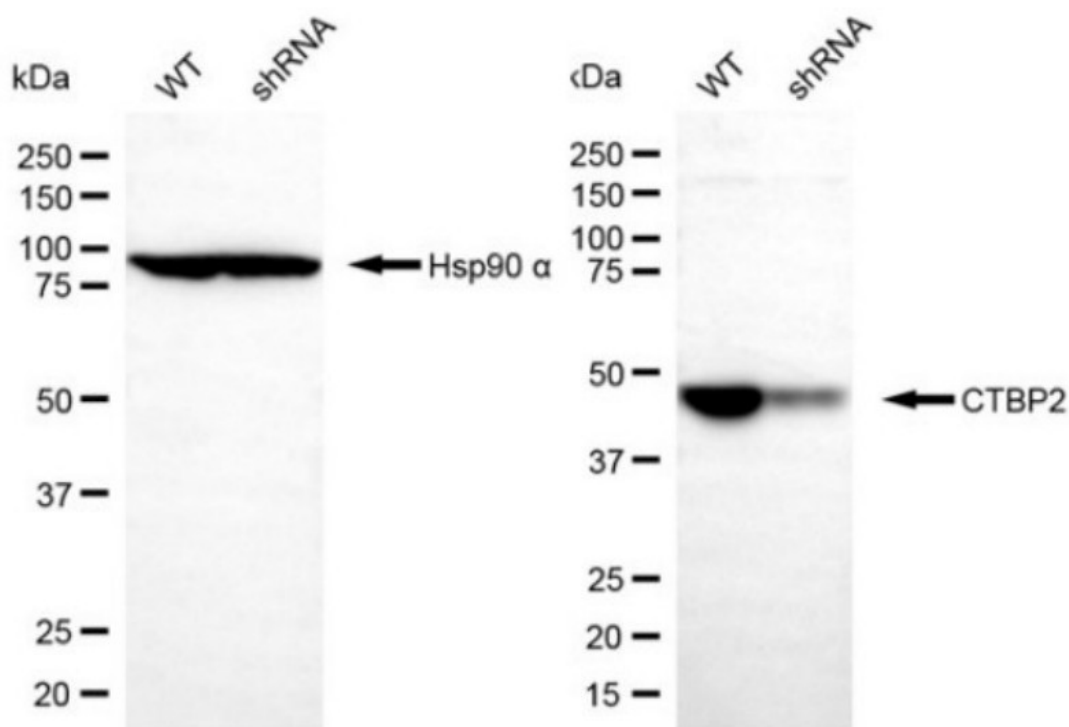
### ORDERS

SALES@GENUINBIOTECH.COM  
FAX: +1-540-855-7041

[WWW.GENUINBIOTECH.COM](http://WWW.GENUINBIOTECH.COM)



Western blotting analysis using anti-CTBP2 antibody (Cat#64989). Total cell lysates (10 µg) from various cell lines were loaded and separated by SDS-PAGE. The blot was incubated with anti-CTBP2 antibody (Cat#64989, 1:2,500) and HRP-conjugated goat anti-rabbit secondary antibody (Cat#201, 1:20,000) respectively. Image was developed using NaQ™ ECL Substrate Kit (Cat#716).



Copyright © 2024 Genuin Biotechnologies LLC

Western blotting analysis using anti-CTBP2 antibody (Cat #64989). CTBP2 expression in wild-type (WT) and CTBP2 shRNA knockdown (KD) HT-1080 cells with 20 µg of total cell lysates. Hsp90 α serves as a loading control. The blot was incubated with anti-CTBP2 antibody (Cat #64989, 1:2,500) and HRP-conjugated goat anti-rabbit secondary antibody (Cat #201, 1:20,000) respectively. Image was developed using NaQ™ ECL Substrate Kit (Cat #716).