

KD-Validated Anti-EEF2 Rabbit Polyclonal Antibody



Catalog #: 64990

Aliases

EEF2; Eukaryotic Translation Elongation Factor 2; EEF-2; EF2; Polypeptidyl-TRNA Translocase; Elongation Factor 2; EF-2; Epididymis Secretory Sperm Binding Protein; C 3.6.5.-; SCA26

Background

Gene Name: EEF2

NCBI Gene Entry: [1938](#)

UniProt Entry: [P13639](#)

Application Information

Molecular Weight: Predicted, 95 kDa; observed, 95 kDa

Clonality: Rabbit polyclonal antibody

Species Reactivity: Human, mouse, rat

Applications Tested: Western blotting (WB)

Immunogen

A synthesized peptide derived from human EEF2

Isotype

Rabbit IgG

Storage Buffer

Supplied in PBS (pH 7.4) containing 50% glycerol, and 0.02% sodium azide.

Storage

Store at -20 °C for one year.

Recommended Dilutions

Western Blotting (WB): 1:500-1:2,500

Note: This product is for research use only.

Validation Data

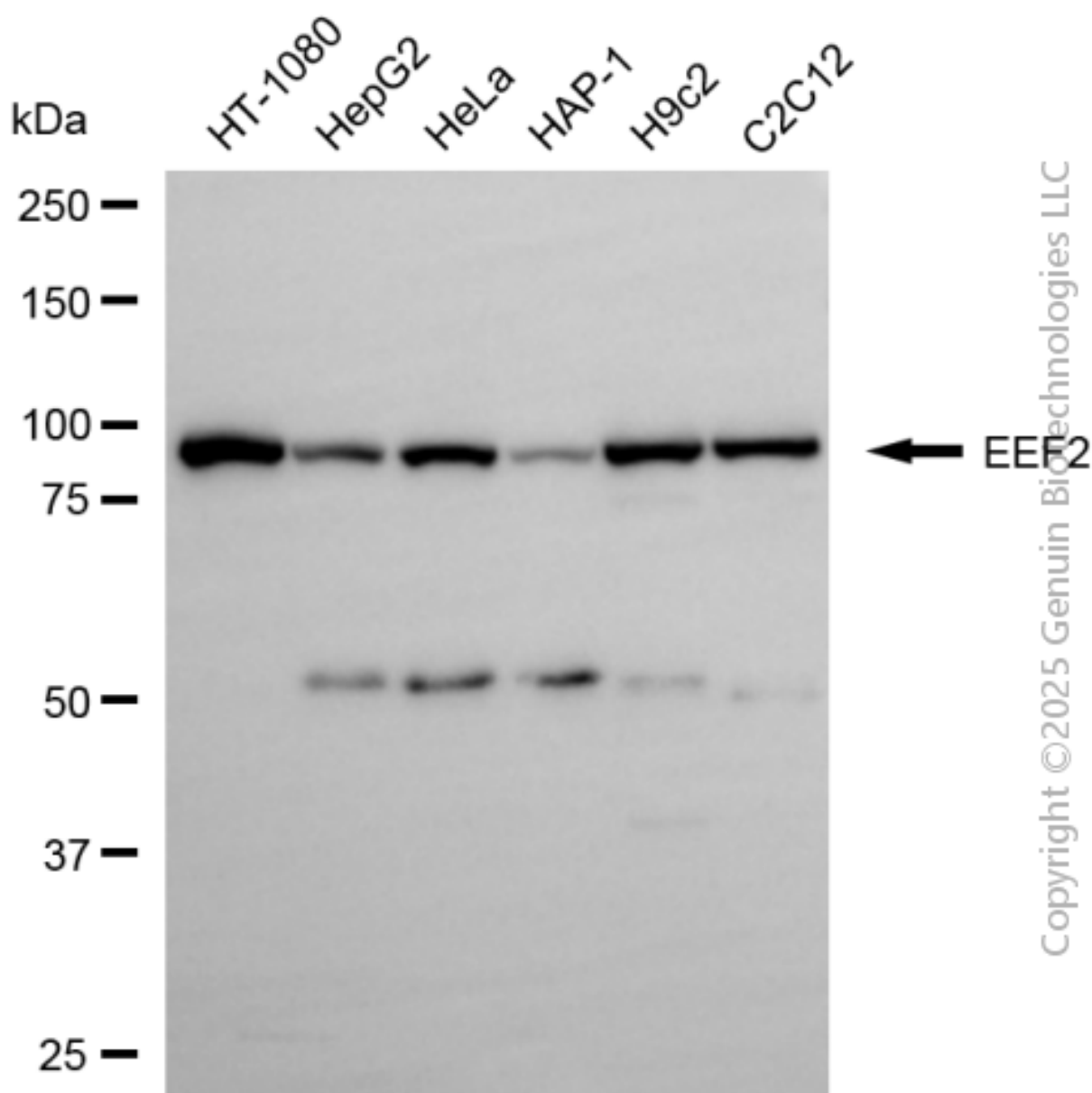
SUPPORT

SUPPORT@GENUINBIOTECH.COM
TEL: +1-540-855-7041

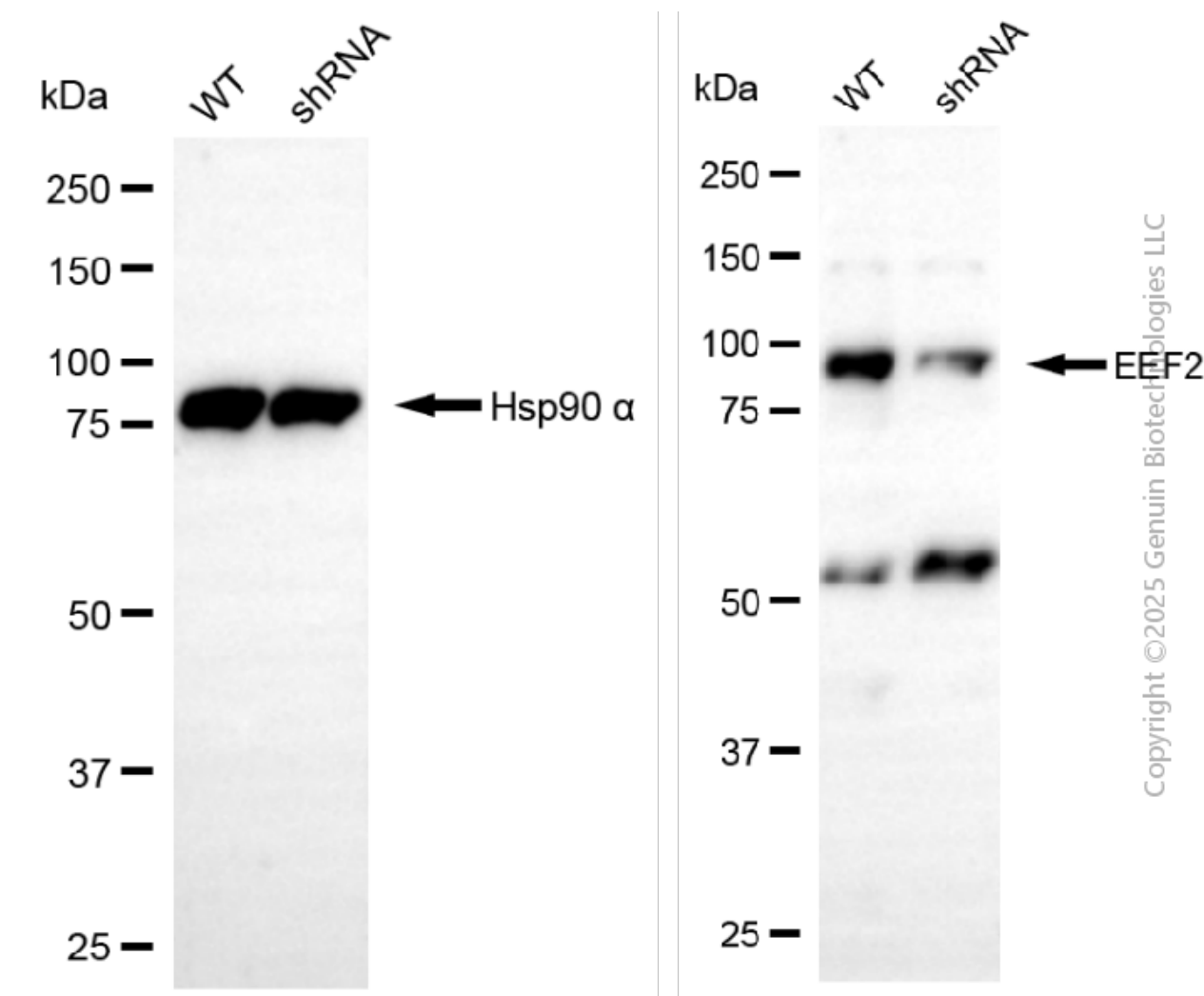
ORDERS

SALES@GENUINBIOTECH.COM
FAX: +1-540-855-7041

WWW.GENUINBIOTECH.COM



Western blotting analysis using anti-EEF2 antibody (Cat#64990). Total cell lysates (30 μ g) from various cell lines were loaded and separated by SDS-PAGE. The blot was incubated with anti-EEF2 antibody (Cat#64990, 1:2,500) and HRP-conjugated goat anti-rabbit secondary antibody (Cat#201, 1:20,000) respectively. Image was developed using NaQ™ ECL Substrate Kit (Cat#716).



Western blotting analysis using anti-EEF2 antibody (Cat#64990). EEF2 expression in wild-type (WT) and EEF2 shRNA knockdown (KD) HeLa cells with 20 µg of total cell lysates. Hsp90 α serves as a loading control. The blot was incubated with anti-EEF2 antibody (Cat#64990, 1:2,500) and HRP-conjugated goat anti-rabbit secondary antibody (Cat#201, 1:20,000) respectively. Image was developed using NaQ™ ECL Substrate Kit (Cat#716).