

KD-Validated Anti-SRC Rabbit Polyclonal Antibody



Catalog #: 64991

Aliases

SRC; SRC Proto-Oncogene, Non-Receptor Tyrosine Kinase; C-Src; SRC1; ASV; V-Src Avian Sarcoma (Schmidt-Ruppin A-2) Viral Oncogene Homolog; Proto-Oncogene Tyrosine-Protein Kinase Src; Proto-Oncogene C-Src; EC 2.7.10.2; P60-Src; Protooncogene SRC, Rous Sarcoma; Tyrosine-Protein Kinase SRC-1; Tyrosine Kinase Pp60c-Src; Pp60c-Src; EC 2.7.10; THC6

Background

Gene Name: SRC

NCBI Gene Entry: [6714](#)

UniProt Entry: [P12931](#)

Application Information

Molecular Weight: Predicted, 60 kDa; observed, 58 kDa

Clonality: Rabbit polyclonal antibody

Species Reactivity: Human, mouse, rat

Applications Tested: Western blotting (WB)

Immunogen

A synthesized peptide derived from human c-SRC

Isotype

Rabbit IgG

Storage Buffer

Supplied in PBS (pH 7.4) containing 50% glycerol, and 0.02% sodium azide.

Storage

Store at -20 °C for one year.

Recommended Dilutions

Western Blotting (WB): 1:500-1:2,500

Note: This product is for research use only.

Validation Data

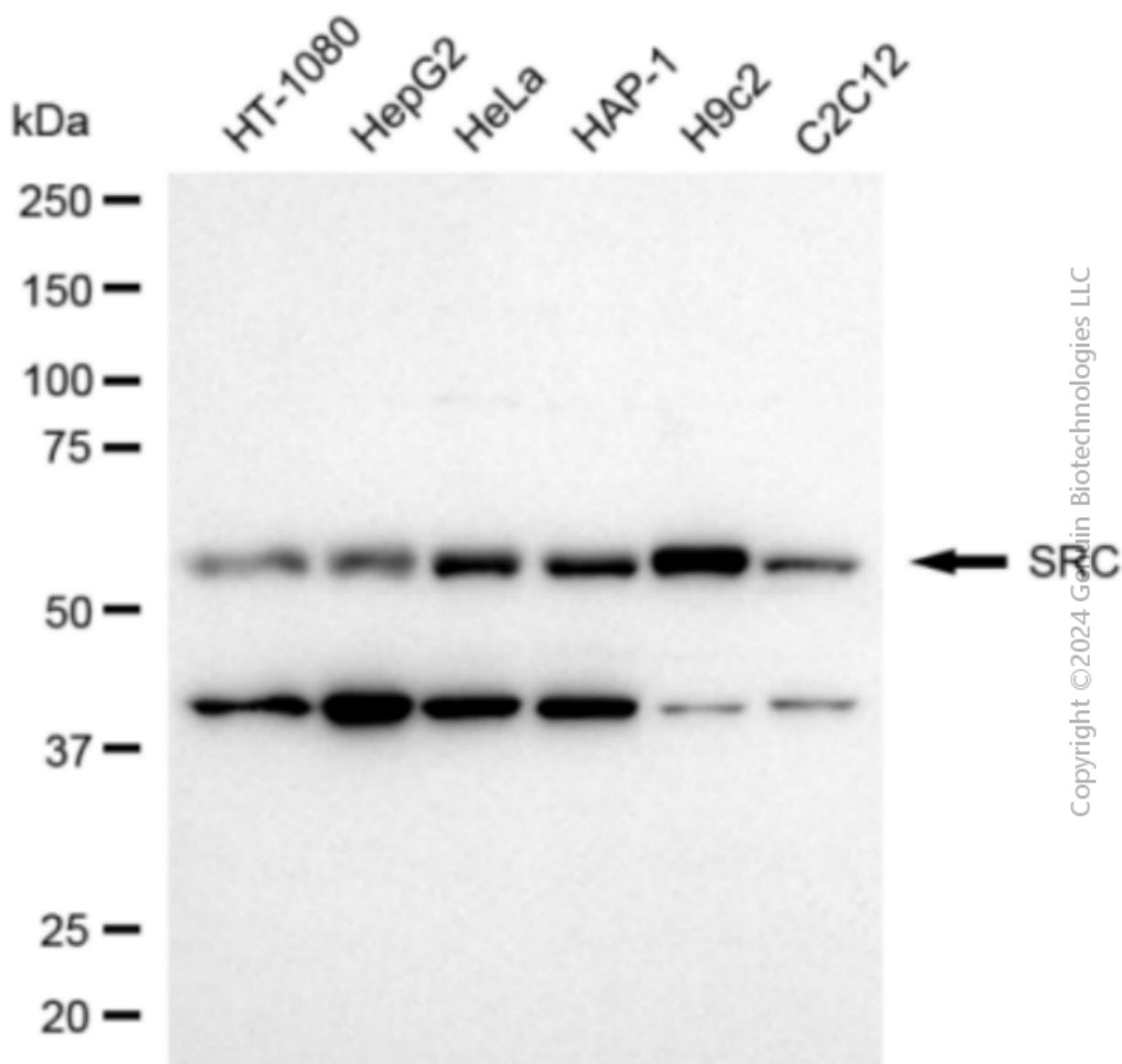
SUPPORT

SUPPORT@GENUINBIOTECH.COM
TEL: +1-540-855-7041

ORDERS

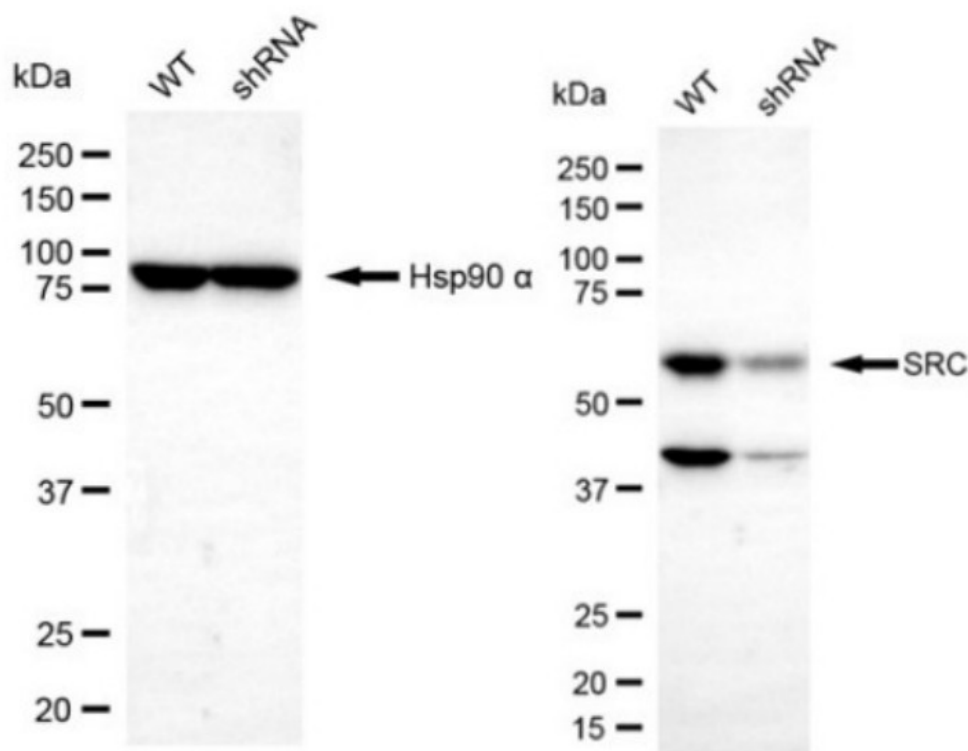
SALES@GENUINBIOTECH.COM
FAX: +1-540-855-7041

WWW.GENUINBIOTECH.COM



Copyright © 2024 Genuin Biotechnologies LLC

Western blotting analysis using anti-SRC antibody (Cat#64991). Total cell lysates (30 µg) from various cell lines were loaded and separated by SDS-PAGE. The blot was incubated with anti-SRC antibody (Cat#64991, 1:2,500) and HRP-conjugated goat anti-rabbit secondary antibody (Cat#201, 1:20,000) respectively. Image was developed using FeQ™ ECL Substrate Kit (Cat#226).



Copyright ©2024 Genuin Biotechnologies LLC

Western blotting analysis using anti-SRC antibody (Cat #64991). SRC expression in wild-type (WT) and SRC shRNA knockdown (KD) HT-1080 cells with 20 μ g of total cell lysates. Hsp90 α serves as a loading control. The blot was incubated with anti-SRC antibody (Cat #64991, 1:2,500) and HRP-conjugated goat anti-rabbit secondary antibody (Cat #201, 1:20,000) respectively. Image was developed using FeQ™ ECL Substrate Kit (Cat #226).