

KD-Validated Anti-CLIC4 Rabbit Polyclonal Antibody



Catalog #: 64993

Aliases

CLIC4; Chloride Intracellular Channel 4; CLIC4L; P64H1; HuH1; H1; Intracellular Chloride Ion Channel Protein P64H1; Chloride Intracellular Channel Protein 4; Glutaredoxin-Like Oxidoreductase CLIC4; DKFZP566G223; Epididymis Secretory Sperm Binding Protein; Chloride Intracellular Channel 4 Like; EC 1.8.-.-; MTCLIC

Background

Gene Name: CLIC4

NCBI Gene Entry: [25932](#)

UniProt Entry: [Q9Y696](#)

Application Information

Molecular Weight: Predicted, 29 kDa; observed, 28 kDa

Clonality: Rabbit polyclonal antibody

Species Reactivity: Human, mouse, rat

Applications Tested: Western blotting (WB)

Immunogen

A synthesized peptide derived from human CLIC4

Isotype

Rabbit IgG

Storage Buffer

Supplied in PBS (pH 7.4) containing 50% glycerol, and 0.02% sodium azide.

Storage

Store at -20 °C for one year.

Recommended Dilutions

Western Blotting (WB): 1:500-1:2,500

Note: This product is for research use only.

Validation Data

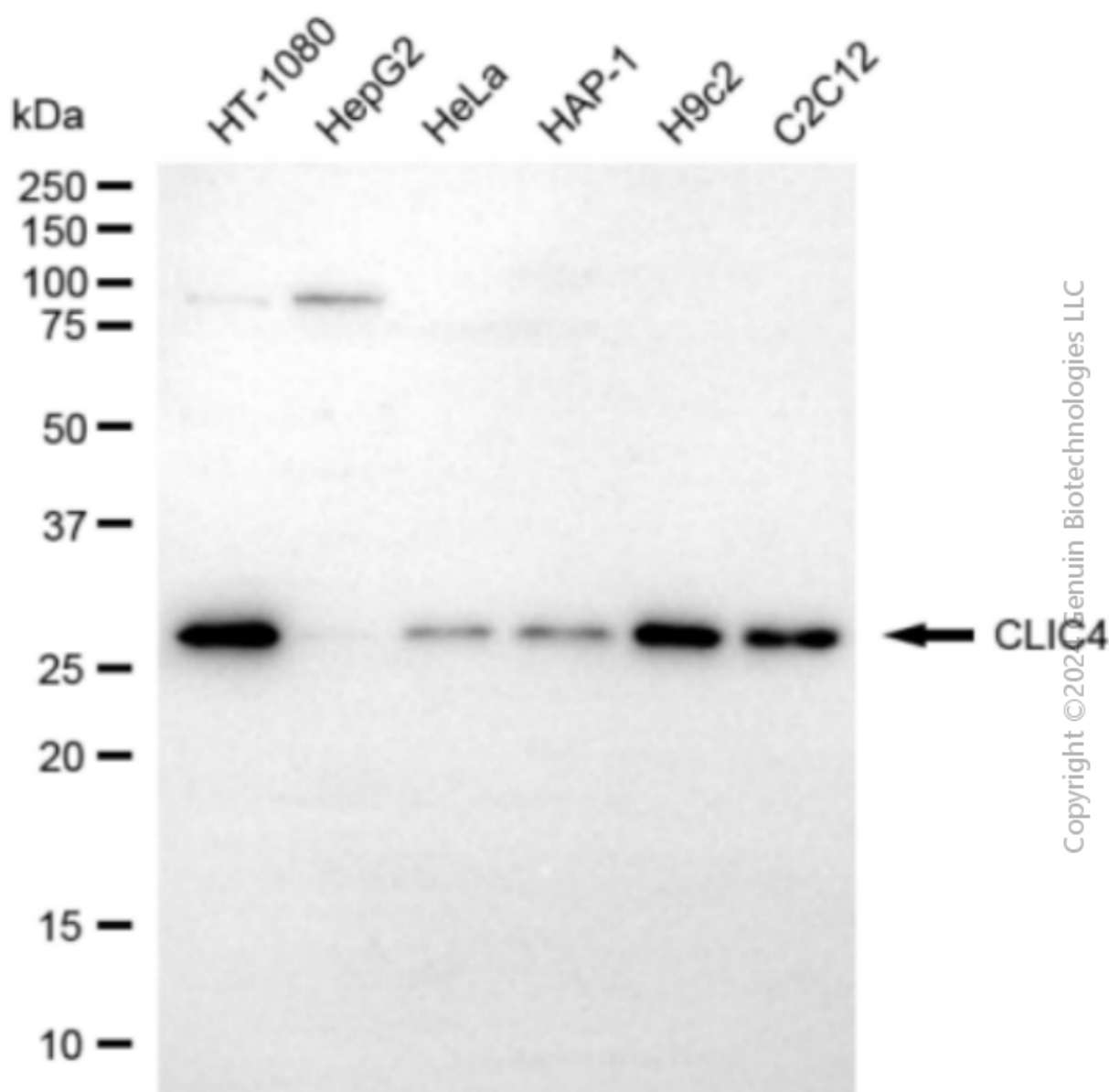
SUPPORT

SUPPORT@GENUINBIOTECH.COM
TEL: +1-540-855-7041

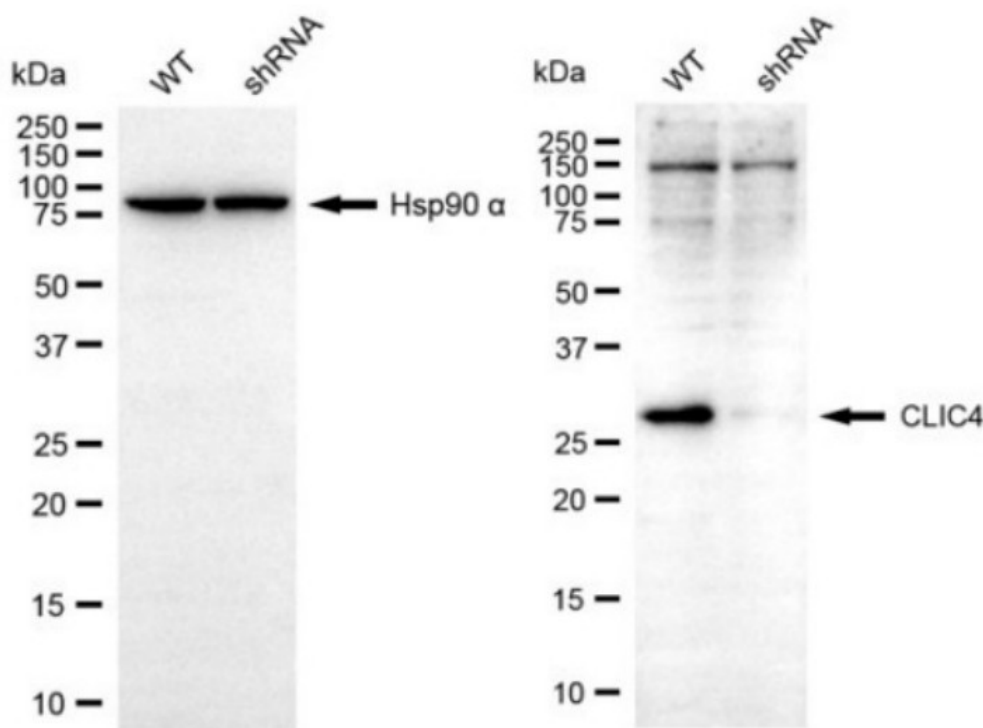
ORDERS

SALES@GENUINBIOTECH.COM
FAX: +1-540-855-7041

WWW.GENUINBIOTECH.COM



Western blotting analysis using anti-CLIC4 antibody (Cat#64993). Total cell lysates (30 µg) from various cell lines were loaded and separated by SDS-PAGE. The blot was incubated with anti-CLIC4 antibody (Cat#64993, 1:2,500) and HRP-conjugated goat anti-rabbit secondary antibody (Cat#201, 1:20,000) respectively. Image was developed using FeQ™ ECL Substrate Kit (Cat#226).



Copyright ©2024 Genuin Biotechnologies LLC

Western blotting analysis using anti-CLIC4 antibody (Cat #64993). CLIC4 expression in wild-type (WT) and CLIC4 shRNA knockdown (KD) HeLa cells with 30 μ g of total cell lysates. Hsp90 α serves as a loading control. The blot was incubated with anti-CLIC4 antibody (Cat #64993, 1:1,000) and HRP-conjugated goat anti-rabbit secondary antibody (Cat #201, 1:20,000) respectively. Image was developed using FeQ™ ECL Substrate Kit (Cat #226).