

KD-Validated Anti-CYFIP1 Rabbit Polyclonal Antibody



Catalog #: 64995

Aliases

CYFIP1; Cytoplasmic FMR1 Interacting Protein 1; P140SRA-1; KIAA0068; SHYC; Cytoplasmic FMRP Interacting Protein 1; Cytoplasmic FMR1-Interacting Protein 1; Specifically Rac1-Associated Protein 1; Selective Hybridizing Clone; P140sra-1; SRA-1; Sra-1; SRA1

Background

Gene Name: CYFIP1

NCBI Gene Entry: [23191](#)

UniProt Entry: [Q7L576](#)

Application Information

Molecular Weight: Predicted, 145 kDa; observed, 149 kDa

Clonality: Rabbit polyclonal antibody

Species Reactivity: Human, mouse, rat

Applications Tested: Western blotting (WB)

Immunogen

A synthesized peptide derived from human CYFIP1

Isotype

Rabbit IgG

Storage Buffer

Supplied in PBS (pH 7.4) containing 50% glycerol, and 0.02% sodium azide.

Storage

Store at -20 °C for one year.

Recommended Dilutions

Western Blotting (WB): 1:500-1:2,500

Note: This product is for research use only.

Validation Data

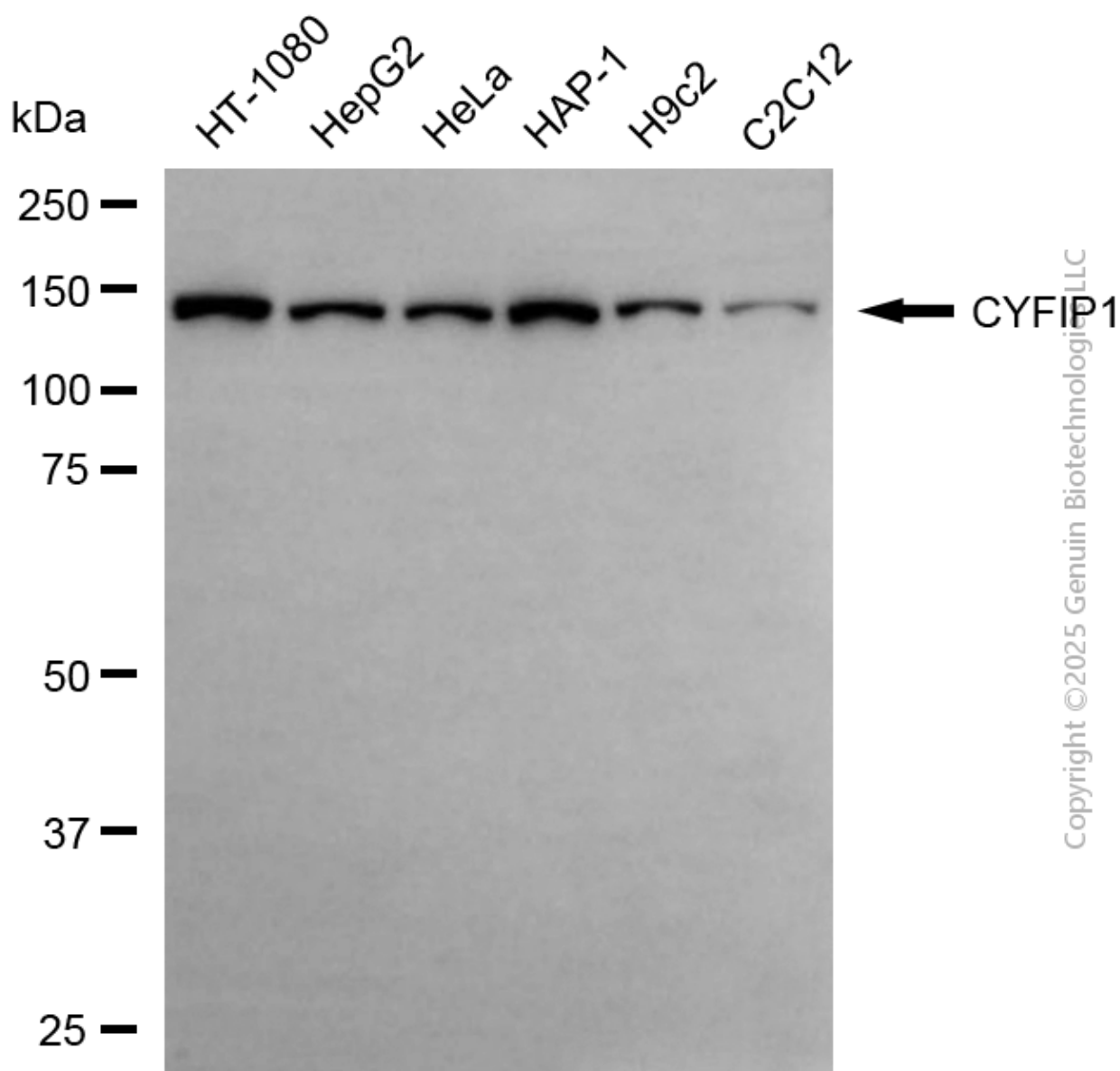
SUPPORT

SUPPORT@GENUINBIOTECH.COM
TEL: +1-540-855-7041

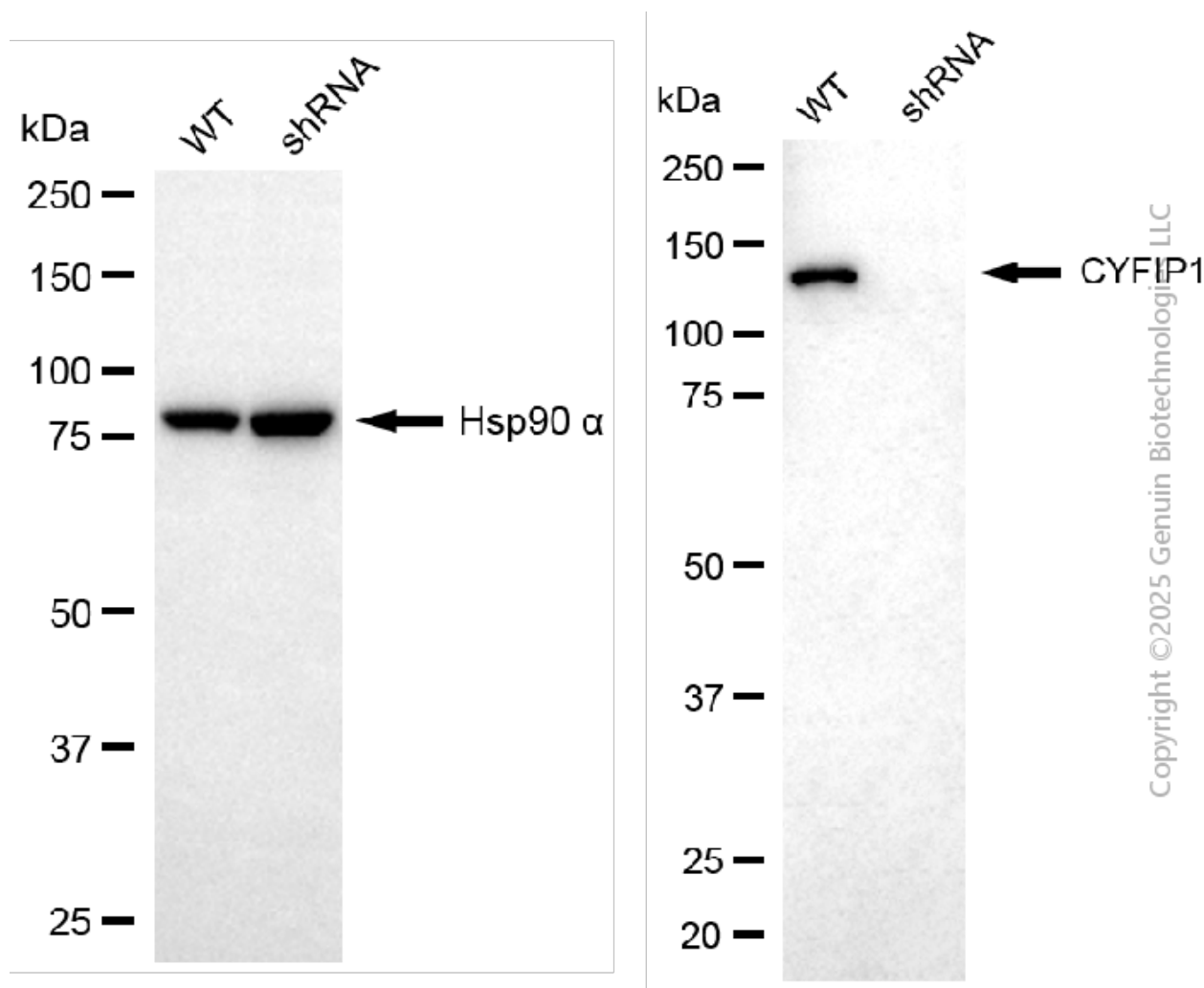
ORDERS

SALES@GENUINBIOTECH.COM
FAX: +1-540-855-7041

WWW.GENUINBIOTECH.COM



Western blotting analysis using anti-CYFIP1 antibody (Cat#64995). Total cell lysates (30 µg) from various cell lines were loaded and separated by SDS-PAGE. The blot was incubated with anti-CYFIP1 antibody (Cat#64995, 1:2,500) and HRP-conjugated goat anti-rabbit secondary antibody (Cat#201, 1:20,000) respectively. Image was developed using FeQ™ ECL Substrate Kit (Cat#226).



Western blotting analysis using anti-CYFIP1 antibody (Cat#64995). CYFIP1 expression in wild-type (WT) and CYFIP1 shRNA knockdown (KD) HeLa cells with 30 µg of total cell lysates. Hsp90 α serves as a loading control. The blot was incubated with anti-CYFIP1 antibody (Cat#64995, 1:2,500) and HRP-conjugated goat anti-rabbit secondary antibody (Cat#201, 1:20,000) respectively. Image was developed using FeQ™ ECL Substrate Kit (Cat#226).