

# KD-Validated Anti-RAD17 Rabbit Polyclonal Antibody



**Catalog #: 65000**

## Aliases

RAD17; RAD17 Checkpoint Clamp Loader Component; RAD17Sp; Rad24; CCYC; Cell Cycle Checkpoint Protein RAD17; R24L; Cell Cycle Checkpoint Protein (RAD17); RAD17 Homolog (S. Pombe); RF-C Activator 1 Homolog; RF-C/Activator 1 Homolog; RAD1 (S. Pombe) Homolog; Rad17-Like Protein; RAD17 Homolog; RAD1 Homolog; HRAD17; HRad17

## Background

Gene Name: RAD17

NCBI Gene Entry: [5884](#)

UniProt Entry: [O75943](#)

## Application Information

Molecular Weight: Predicted, 77 kDa; observed, 74 kDa

Clonality: Rabbit polyclonal antibody

Species Reactivity: Human, mouse, rat

Applications Tested: Western blotting (WB)

## Immunogen

A synthesized peptide derived from human RAD17

## Isotype

Rabbit IgG

## Storage Buffer

Supplied in PBS (pH 7.4) containing 50% glycerol, and 0.02% sodium azide.

## Storage

Store at -20 °C for one year.

## Recommended Dilutions

Western Blotting (WB): 1:500-1:2,500

**Note:** This product is for research use only.

## Validation Data

---

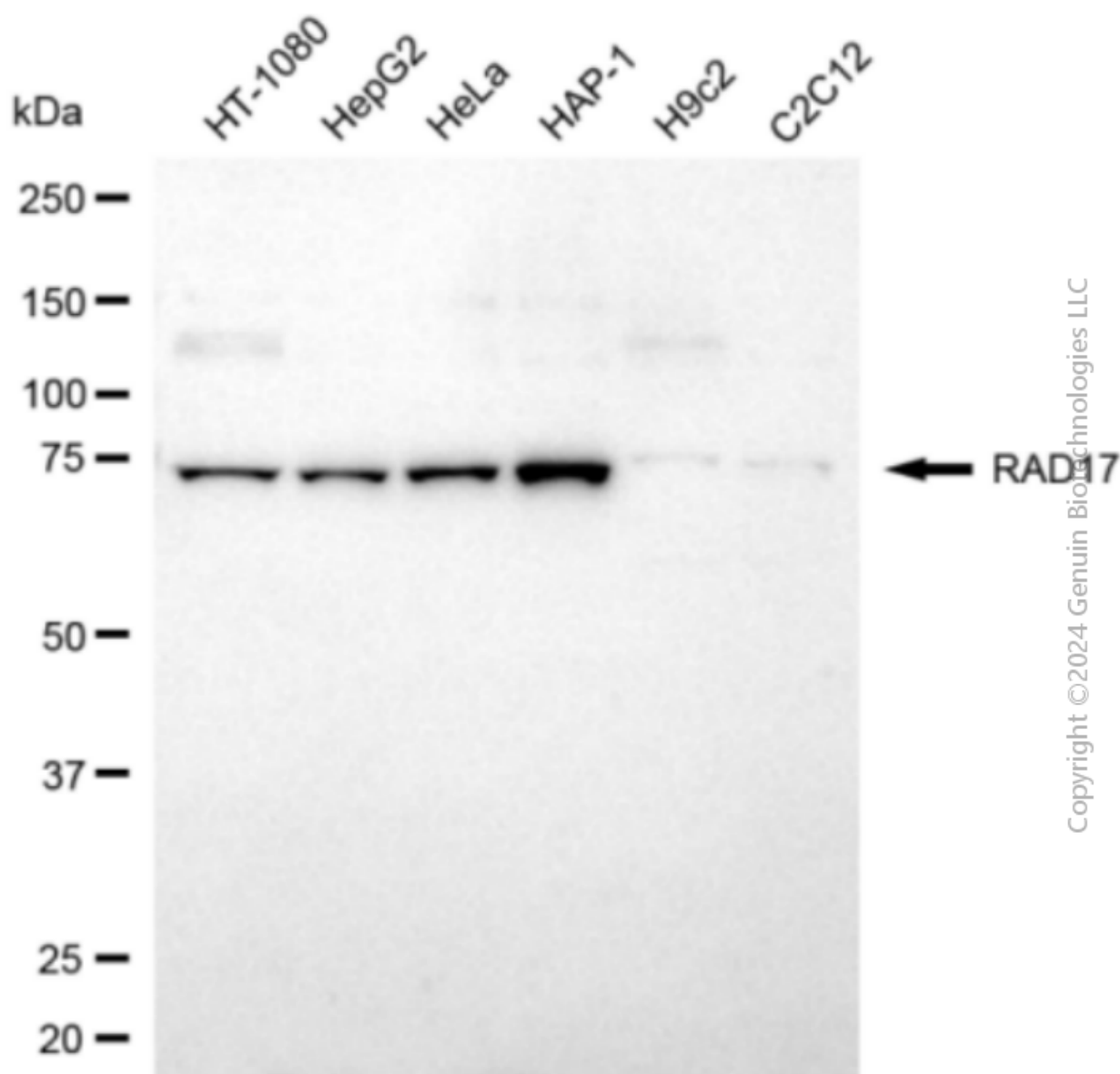
### SUPPORT

SUPPORT@GENUINBIOTECH.COM  
TEL: +1-540-855-7041

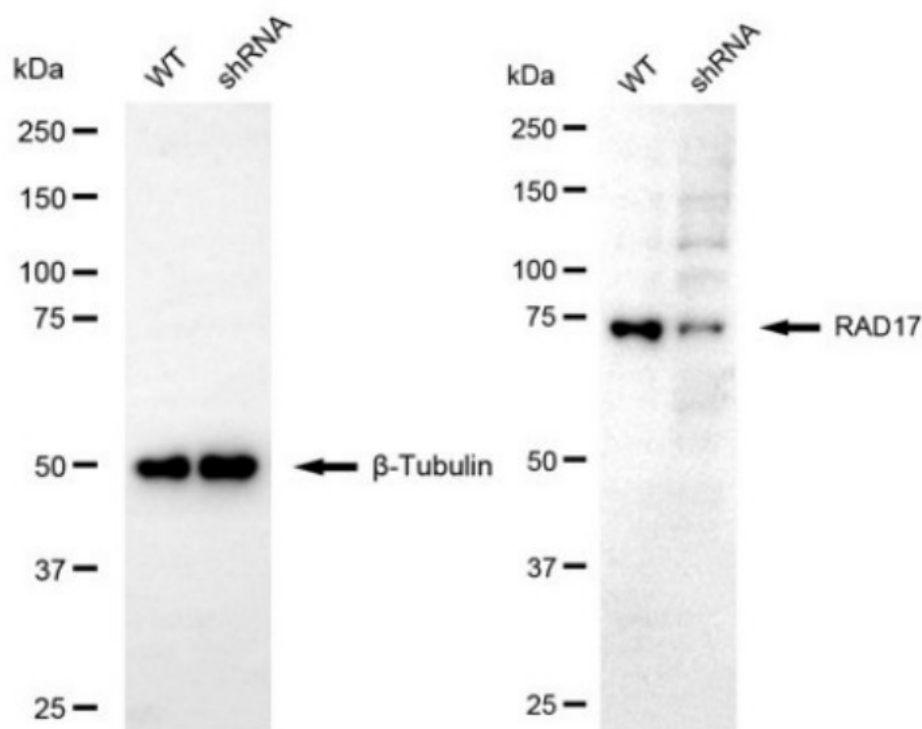
### ORDERS

SALES@GENUINBIOTECH.COM  
FAX: +1-540-855-7041

[WWW.GENUINBIOTECH.COM](http://WWW.GENUINBIOTECH.COM)



Western blotting analysis using anti-RAD17 antibody (Cat#65000). Total cell lysates (30 µg) from various cell lines were loaded and separated by SDS-PAGE. The blot was incubated with anti-RAD17 antibody (Cat#65000, 1:2,500) and HRP-conjugated goat anti-rabbit secondary antibody (Cat#201, 1:20,000) respectively. Image was developed using NaQ™ ECL Substrate Kit (Cat#716).



Copyright ©2024 Genuin Biotechnologies LLC

Western blotting analysis using anti-RAD17 antibody (Cat #65000). RAD17 expression in wild-type (WT) and RAD17 shRNA knockdown (KD) HeLa cells with 30  $\mu$ g of total cell lysates.  $\beta$ -Tubulin serves as a loading control. The blot was incubated with anti-RAD17 antibody (Cat #65000, 1:2,500) and HRP-conjugated goat anti-rabbit secondary antibody (Cat #201, 1:20,000) respectively. Image was developed using FeQ™ ECL Substrate Kit (Cat #226).