

KD-Validated Anti-ARHGEF2 Rabbit Polyclonal Antibody



Catalog #: 65003

Aliases

ARHGEF2; Rho/Rac Guanine Nucleotide Exchange Factor 2; GEF-H1; LFP40; KIAA0651; GEFH1; P40; Lfc; Rho/Rac Guanine Nucleotide Exchange Factor (GEF) 2; Rho Guanine Nucleotide Exchange Factor 2; Proliferating Cell Nucleolar Antigen P40; Guanine Nucleotide Exchange Factor H1; Microtubule-Regulated Rho-GEF; NEDMHM; GEF

Background

Gene Name: ARHGEF2

NCBI Gene Entry: [9181](#)

UniProt Entry: [Q92974](#)

Application Information

Molecular Weight: Predicted, 112 kDa; observed, 120 kDa

Clonality: Rabbit polyclonal antibody

Species Reactivity: Human, mouse, rat

Applications Tested: Western blotting (WB)

Immunogen

A synthesized peptide derived from human GEF H1

Isotype

Rabbit IgG

Storage Buffer

Supplied in PBS (pH 7.4) containing 50% glycerol, and 0.02% sodium azide.

Storage

Store at -20 °C for one year.

Recommended Dilutions

Western Blotting (WB): 1:500-1:2,500

Note: This product is for research use only.

Validation Data

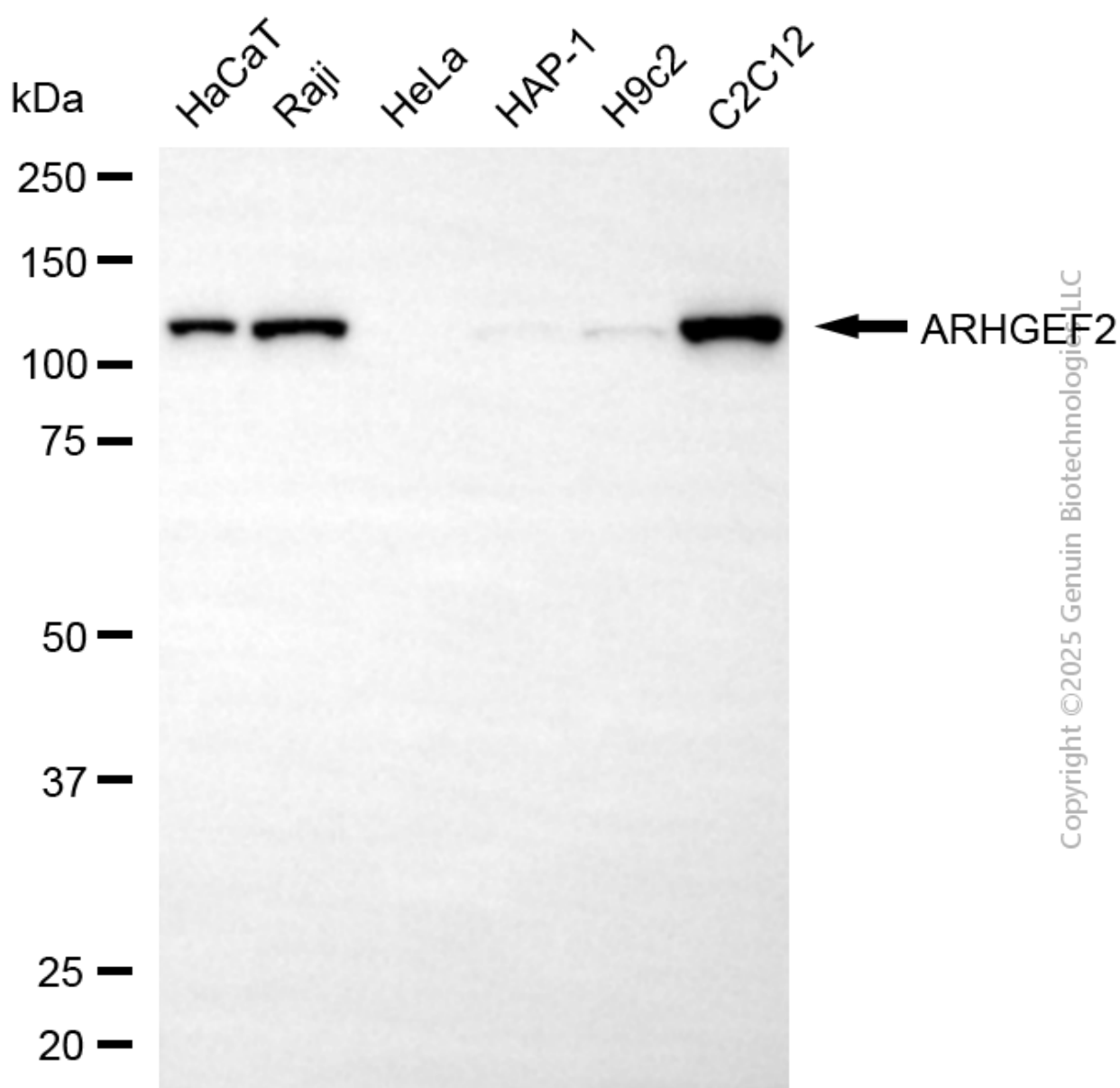
SUPPORT

SUPPORT@GENUINBIOTECH.COM
TEL: +1-540-855-7041

ORDERS

SALES@GENUINBIOTECH.COM
FAX: +1-540-855-7041

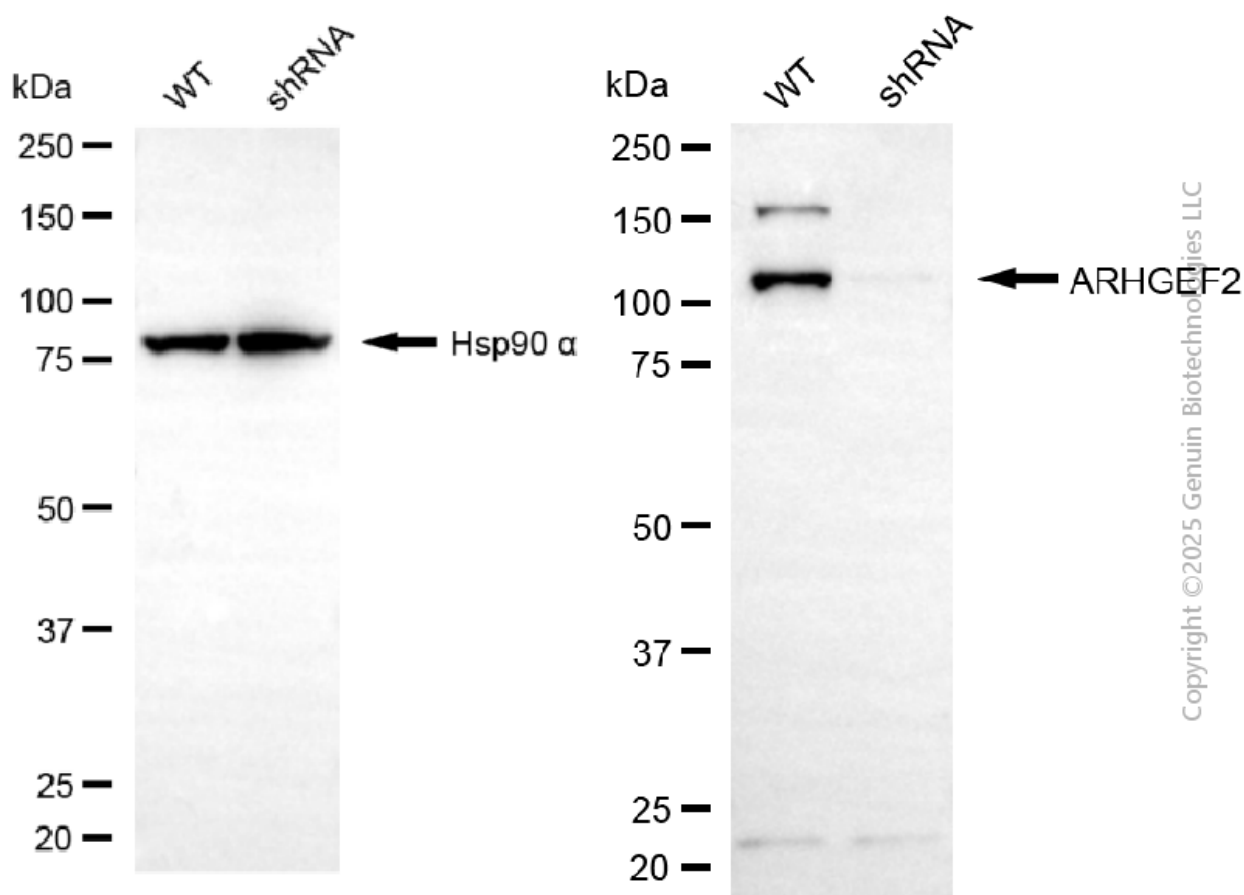
WWW.GENUINBIOTECH.COM



Western blotting analysis using anti-ARHGEF2 antibody (Cat#65003). Total cell lysates (30 µg) from various cell lines were loaded and separated by SDS-PAGE. The blot was incubated with anti-ARHGEF2 antibody (Cat#65003, 1:2,500) and HRP-conjugated goat anti-rabbit secondary antibody (Cat#201, 1:20,000) respectively. Image was developed using FeQ™ ECL Substrate Kit (Cat#226).

KD-Validated Anti-ARHGEF2 Rabbit Polyclonal Antibody

PAGE 3



Western blotting analysis using anti-ARHGEF2 antibody (Cat#65003). ARHGEF2 expression in wild-type (WT) and ARHGEF2 shRNA knockdown (KD) HeLa cells with 30 μ g of total cell lysates. Hsp90 α serves as a loading control. The blot was incubated with anti-ARHGEF2 antibody (Cat#65003, 1:2,500) and HRP-conjugated goat anti-rabbit secondary antibody (Cat#201, 1:20,000) respectively. Image was developed using FeQ™ ECL Substrate Kit (Cat#226).

SUPPORT

SUPPORT@GENUINBIOTECH.COM
TEL: +1-540-855-7041

ORDERS

SALES@GENUINBIOTECH.COM
FAX: +1-540-855-7041

WWW.GENUINBIOTECH.COM