

KD-Validated Anti-Vinculin Rabbit Polyclonal Antibody



Catalog #: 65016

Aliases

VCL; Vinculin; Metavinculin; VINC; MV; Epididymis Secretory Sperm Binding Protein; Epididymis Luminal Protein 114; Meta-Vinculin; HEL114; CMD1W; CMH15; MVCL

Background

Gene Name: VCL

NCBI Gene Entry: [7414](#)

UniProt Entry: [P18206](#)

Application Information

Molecular Weight: Predicted, 124 kDa; observed, 124 kDa

Clonality: Rabbit polyclonal antibody

Species Reactivity: Human, mouse, rat

Applications Tested: Western blotting (WB)

Immunogen

A synthesized peptide derived from human Vinculin

Isotype

Rabbit IgG

Storage Buffer

Supplied in PBS (pH 7.4) containing 50% glycerol, and 0.02% sodium azide.

Storage

Store at -20 °C for one year.

Recommended Dilutions

Western Blotting (WB): 1:500-1:2,500

Note: This product is for research use only.

Validation Data

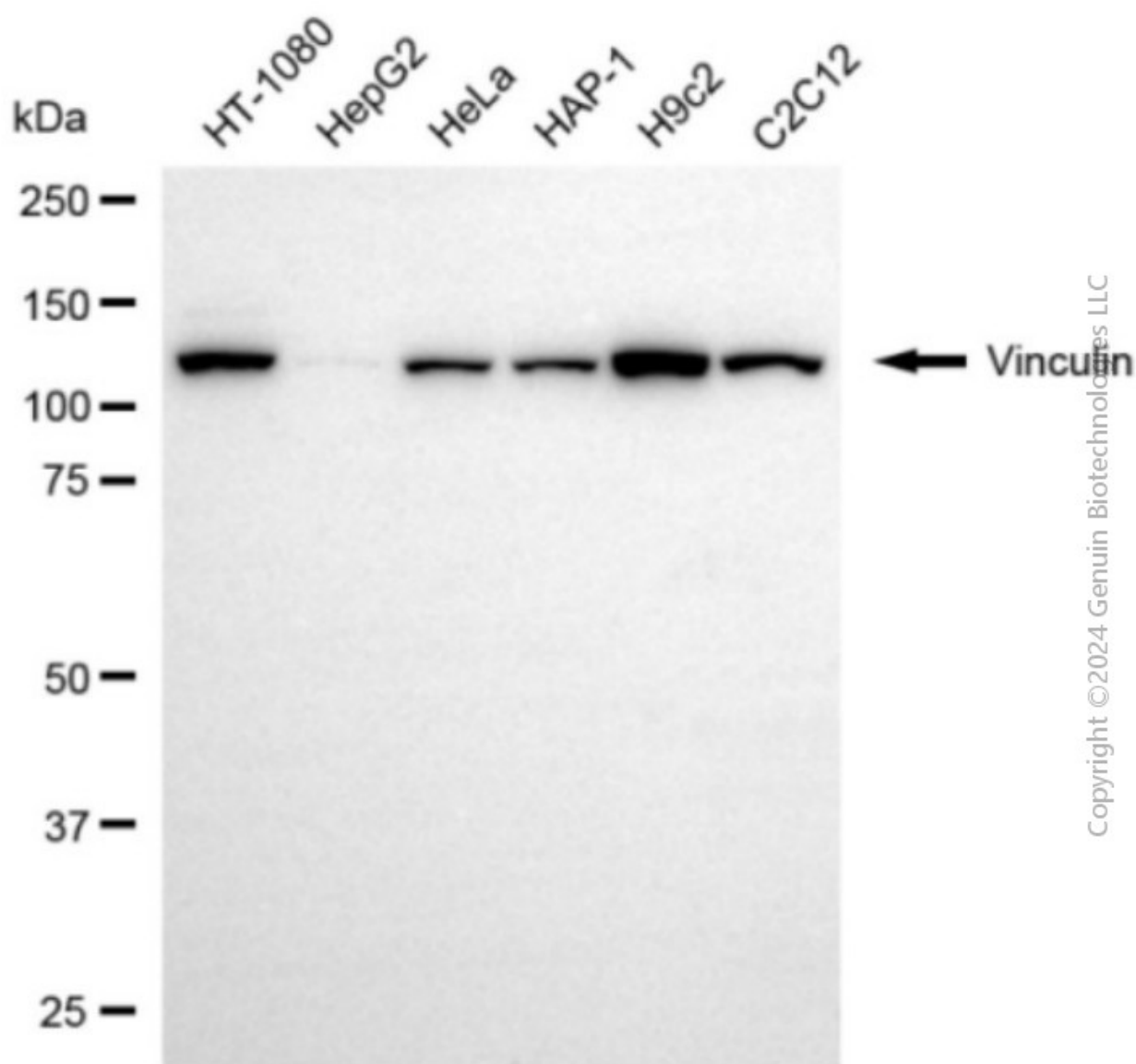
SUPPORT

SUPPORT@GENUINBIOTECH.COM
TEL: +1-540-855-7041

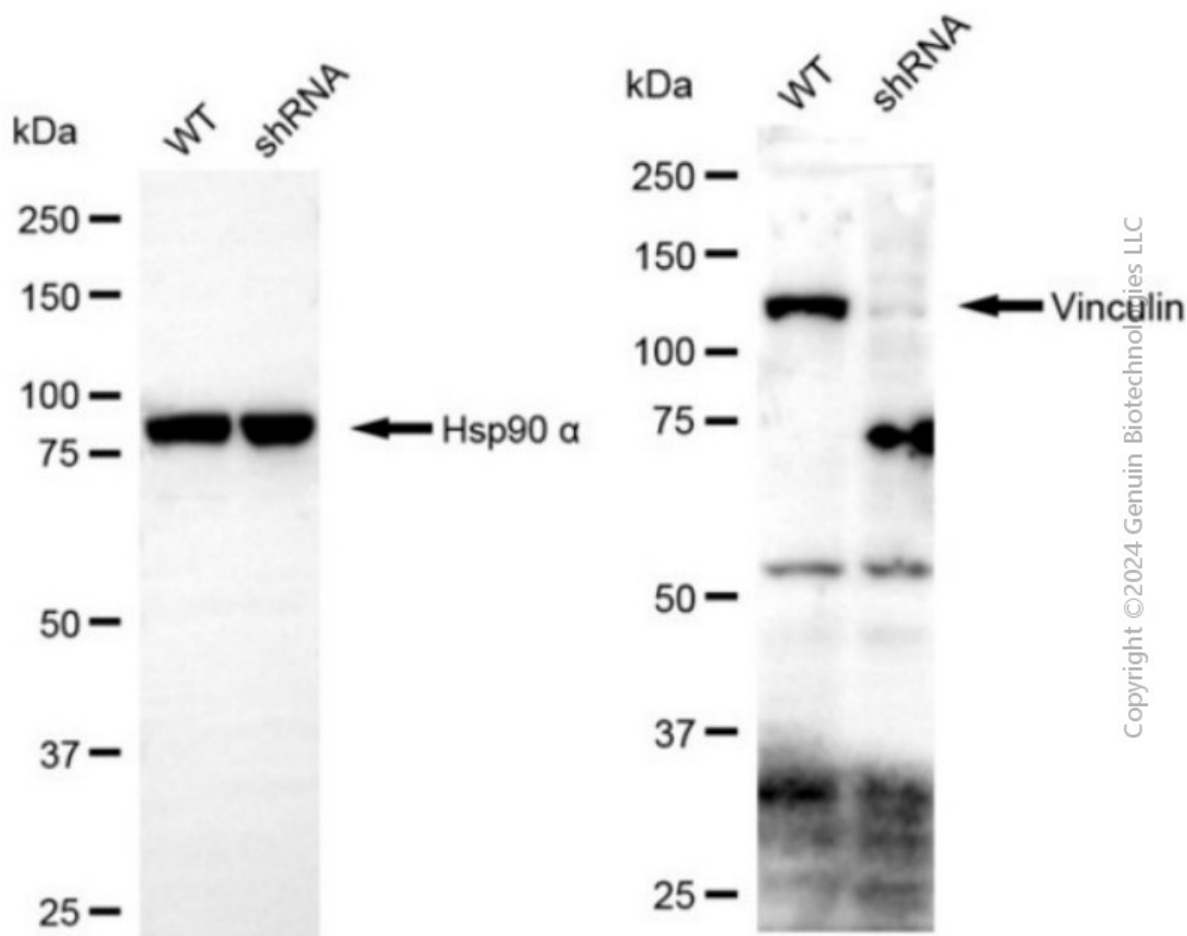
ORDERS

SALES@GENUINBIOTECH.COM
FAX: +1-540-855-7041

WWW.GENUINBIOTECH.COM



Western blotting analysis using anti-vinculin antibody (Cat#65016). Total cell lysates (30 μ g) from various cell lines were loaded and separated by SDS-PAGE. The blot was incubated with anti-vinculin antibody (Cat#65016, 1:2,500) and HRP-conjugated goat anti-rabbit secondary antibody (Cat#201, 1:20,000) respectively. Image was developed using FeQ™ ECL Substrate Kit (Cat#226).



Western blotting analysis using anti-vinculin antibody (Cat#65016). Vinculin expression in wild-type (WT) and vinculin (VCL) shRNA knockdown (KD) HeLa cells with 20 µg of total cell lysates. Hsp90 α serves as a loading control. The blot was incubated with anti-vinculin antibody (Cat#65016, 1:2,500) and HRP-conjugated goat anti-rabbit secondary antibody (Cat#201, 1:20,000) respectively. Image was developed using NaQ™ ECL Substrate Kit (Cat#716).