

KD-Validated Anti-SH3GL1 Mouse Monoclonal Antibody



Catalog #: 65029

Aliases

SH3GL1; SH3 Domain Containing GRB2 Like 1, Endophilin A2; SH3D2B; CNSA1; EEN; SH3P8; Extra Eleven-Nineteen Leukemia Fusion Gene Protein; SH3 Domain-Containing GRB2-Like Protein 1; SH3-Containing Grb-2-Like 1 Protein; Extra 11-19 Leukemia Fusion; EEN Fusion Partner Of MLL; SH3-Domain GRB2-Like 1; SH3 Domain Protein 2B; Endophilin-A2; Endophilin-2; MGC111371; SH3 Domain Containing GRB2 Like 1; SH3-Containing Protein EEN; SH3 Domain GRB2-Like 1; Fusion Partner Of MLL; Endophilin A2

Background

Gene Name: SH3GL1

NCBI Gene Entry: [6455](#)

UniProt Entry: [Q99961](#)

Application Information

Molecular Weight: Predicted, 41 kDa; observed, 45 kDa

Clonality: Mouse monoclonal antibody

Clone ID: 24GB13930

Species Reactivity: Human

Applications Tested: Western blotting (WB), flow cytometry (FCM)

Immunogen

Recombinant protein of human SH3GL1

Isotype

Mouse IgG1

Storage Buffer

Supplied in PBS (pH 7.4) containing 50% glycerol, and 0.02% sodium azide.

Storage

Store at -20 °C for one year.

Recommended Dilutions

Western Blotting (WB): 1:500-1:2,500

Flow Cytometry (FCM): 1:1,000

SUPPORT

SUPPORT@GENUINBIOTECH.COM
TEL: +1-540-855-7041

ORDERS

SALES@GENUINBIOTECH.COM
FAX: +1-540-855-7041

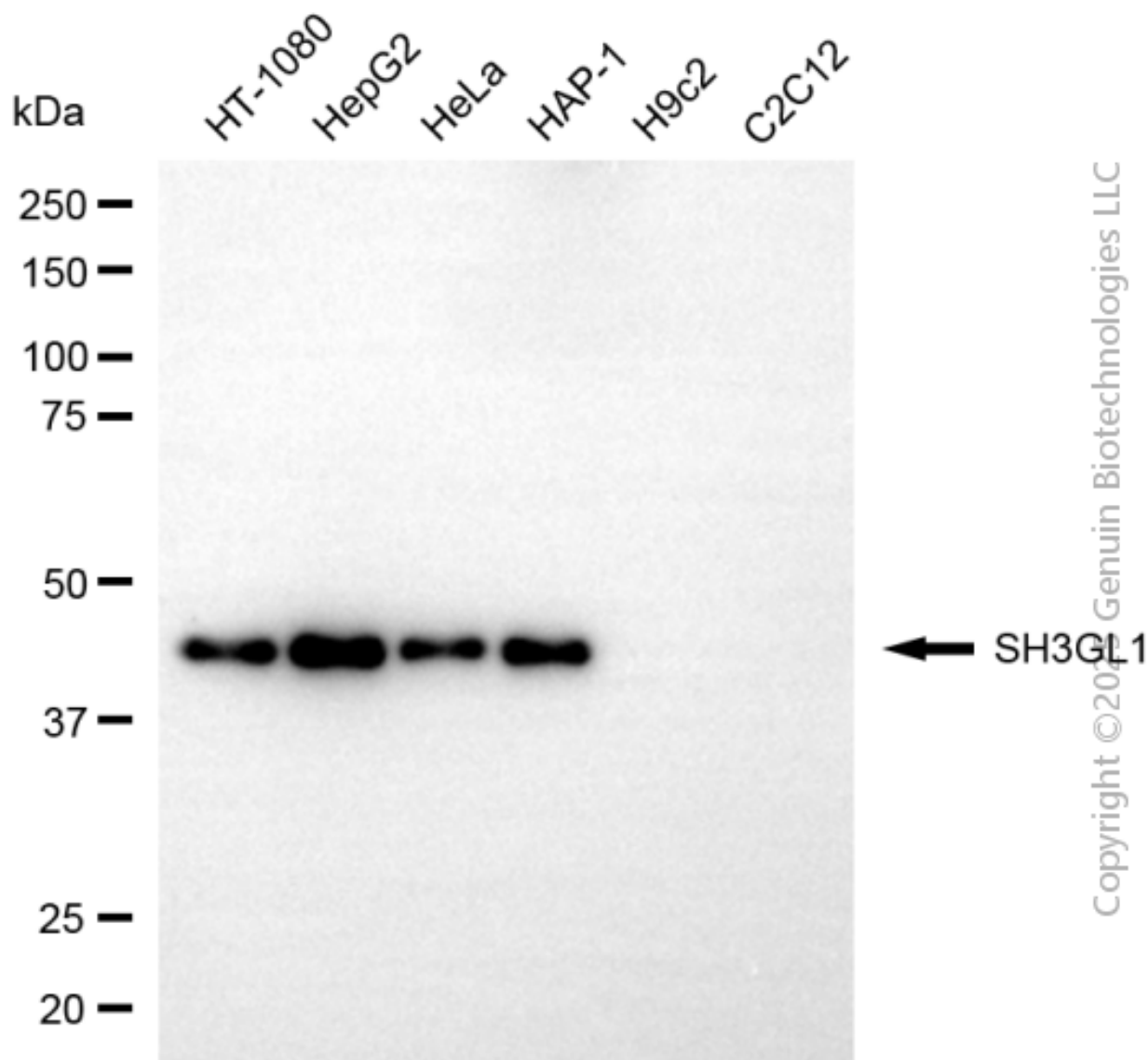
WWW.GENUINBIOTECH.COM

KD-Validated Anti-SH3GL1 Mouse Monoclonal Antibody

PAGE 2

Note: This product is for research use only.

Validation Data



Western blotting analysis using anti-SH3GL1 antibody (Cat#65029). Total cell lysates (30 µg) from various cell lines were loaded and separated by SDS-PAGE. The blot was incubated with anti-SH3GL1 antibody (Cat#65029, 1:2,500) and HRP-conjugated goat anti-mouse secondary antibody (Cat#101, 1:20,000) respectively. Image was developed using FeQ™ ECL Substrate Kit (Cat#226).

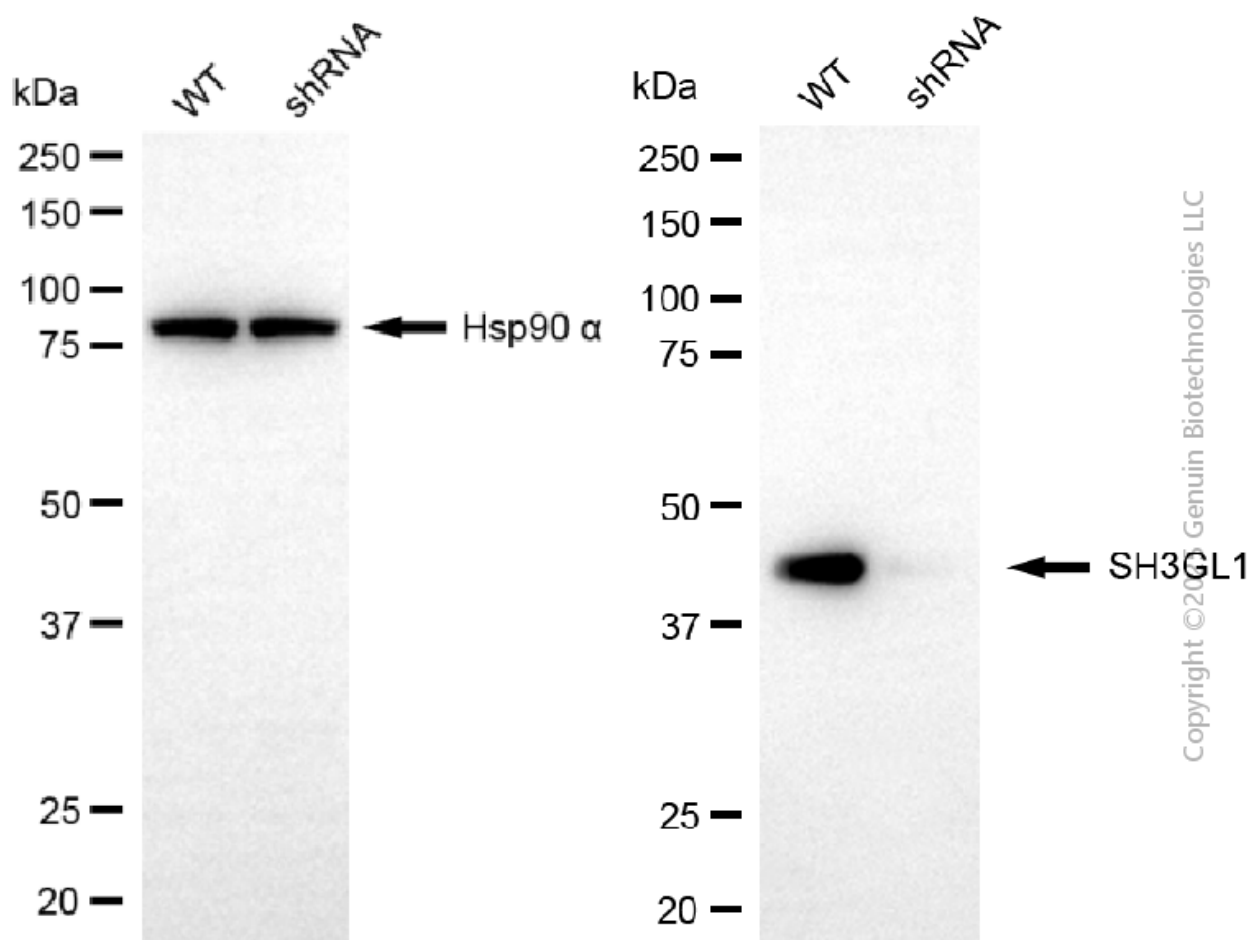
SUPPORT

SUPPORT@GENUINBIOTECH.COM
TEL: +1-540-855-7041

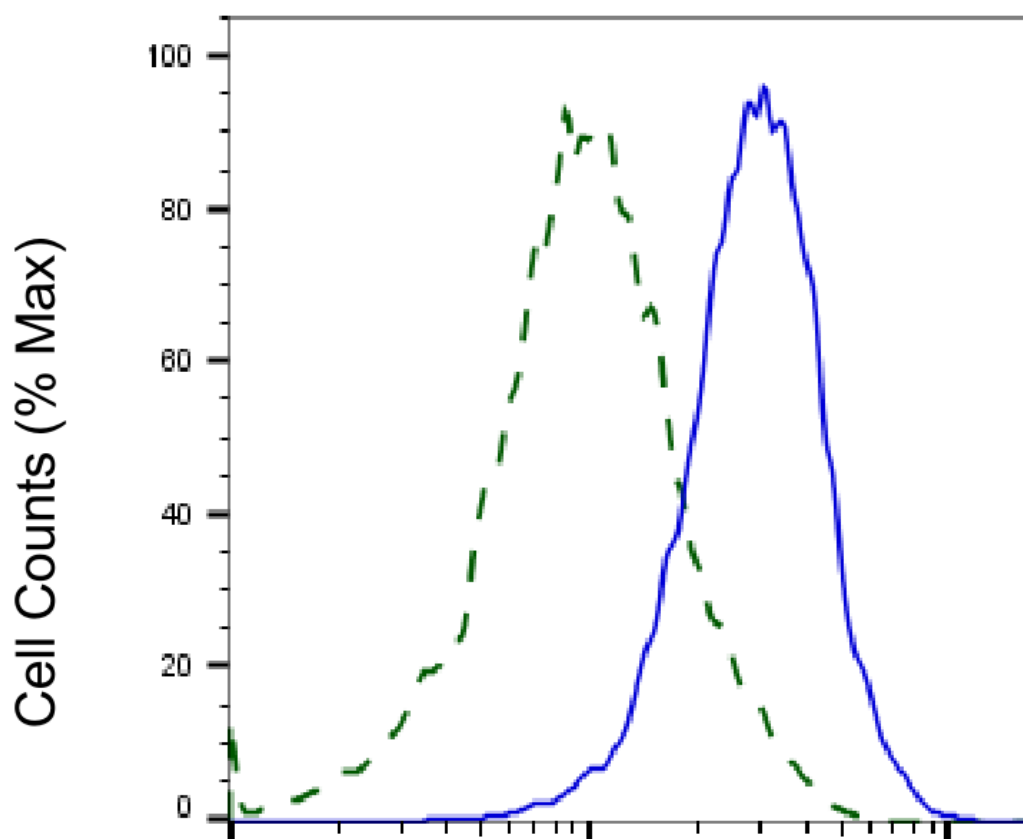
ORDERS

SALES@GENUINBIOTECH.COM
FAX: +1-540-855-7041

WWW.GENUINBIOTECH.COM



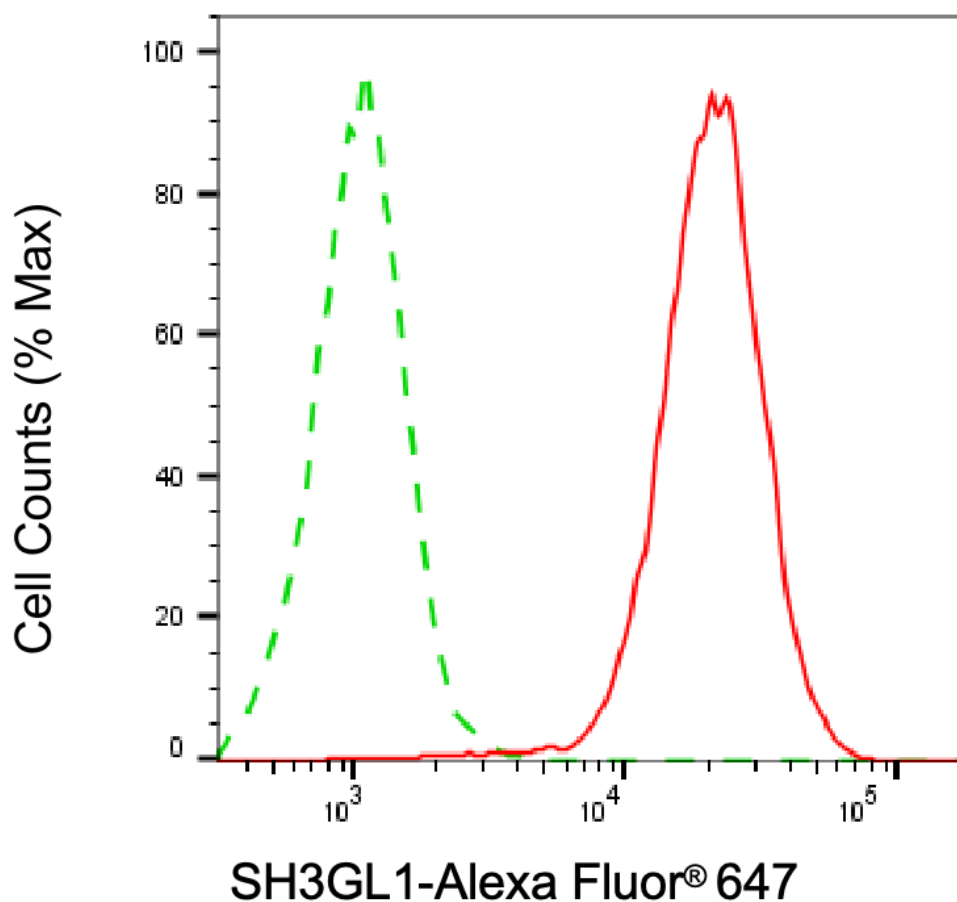
Western blotting analysis using anti-SH3GL1 antibody (Cat#65029). SH3GL1 expression in wild-type (WT) and SH3GL1 shRNA knockdown (KD) HeLa cells with 30 µg of total cell lysates. Hsp90 α serves as a loading control. The blot was incubated with anti-SH3GL1 antibody (Cat#65029, 1:1,000) and HRP-conjugated goat anti-mouse secondary antibody (Cat#101, 1:20,000) respectively. Image was developed using FeQ™ ECL Substrate Kit (Cat#226).



Copyright ©2025 Genuin Biotechnologies LLC

SH3GL1-Alexa Fluor® 647

Validation of SH3GL1 knockdown using flow cytometry. Wild-type(WT, Blue) and knockdown(KD, Green) HeLa cells were stained with anti-SH3GL1 antibody (Cat#65029, 1:2,000) and analyzed using BD flow cytometer.



Copyright ©2025 Genuin Biotechnologies LLC

Flow cytometric analysis of SH3GL1 expression in HepG2 cells using anti-SH3GL1 antibody (Cat#65029, 1:1,000). Green, isotype control; red, SH3GL1.