

KD-Validated Anti-RDH14 Mouse Monoclonal Antibody



Catalog #: 65035

Aliases

RDH14; Retinol Dehydrogenase 14; SDR7C4; PAN2; Short Chain Dehydrogenase/Reductase Family 7C Member 4; Retinol Dehydrogenase 14 (All-Trans/9-Cis/11-Cis); Retinol Dehydrogenase 14 (All-Trans And 9-Cis); Alcohol Dehydrogenase PAN2; Short Chain Dehydrogenase/Reductase Family 7C, Member 4; Pancreas Protein 2; EC 1.1.1.300

Background

Gene Name: RDH14

NCBI Gene Entry: [57665](#)

UniProt Entry: [Q9HBH5](#)

Application Information

Molecular Weight: Predicted, 37 kDa; observed, 33 kDa

Clonality: Mouse monoclonal antibody

Clone ID: 24GB13960

Species Reactivity: Human, mouse, rat

Applications Tested: Western blotting (WB)

Immunogen

Recombinant protein of human RDH14

Isotype

Mouse IgG1

Storage Buffer

Supplied in PBS (pH 7.4) containing 50% glycerol, and 0.02% sodium azide.

Storage

Store at -20 °C for one year.

Recommended Dilutions

Western Blotting (WB): 1:100-1:500

Note: This product is for research use only.

Validation Data

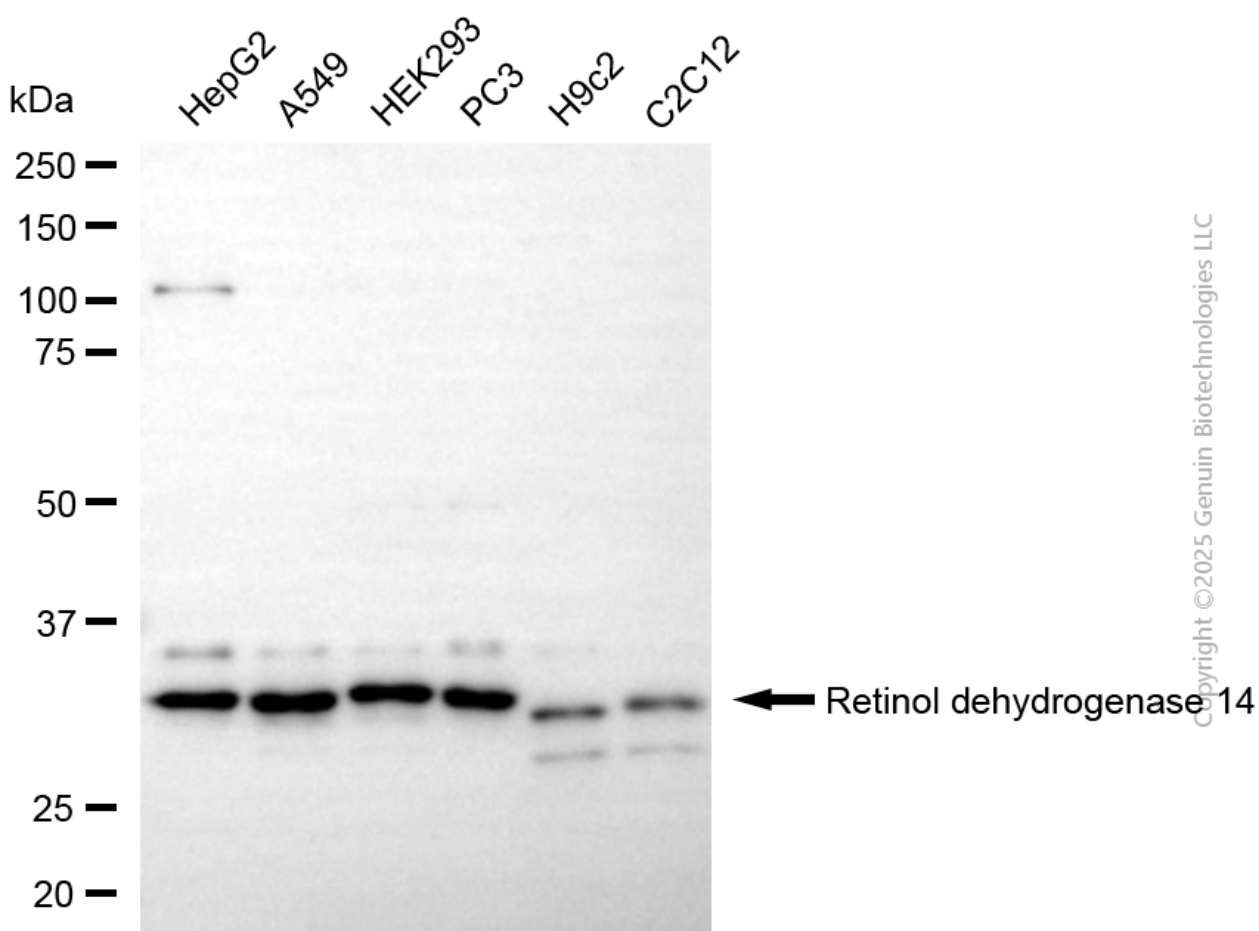
SUPPORT

SUPPORT@GENUINBIOTECH.COM
TEL: +1-540-855-7041

ORDERS

SALES@GENUINBIOTECH.COM
FAX: +1-540-855-7041

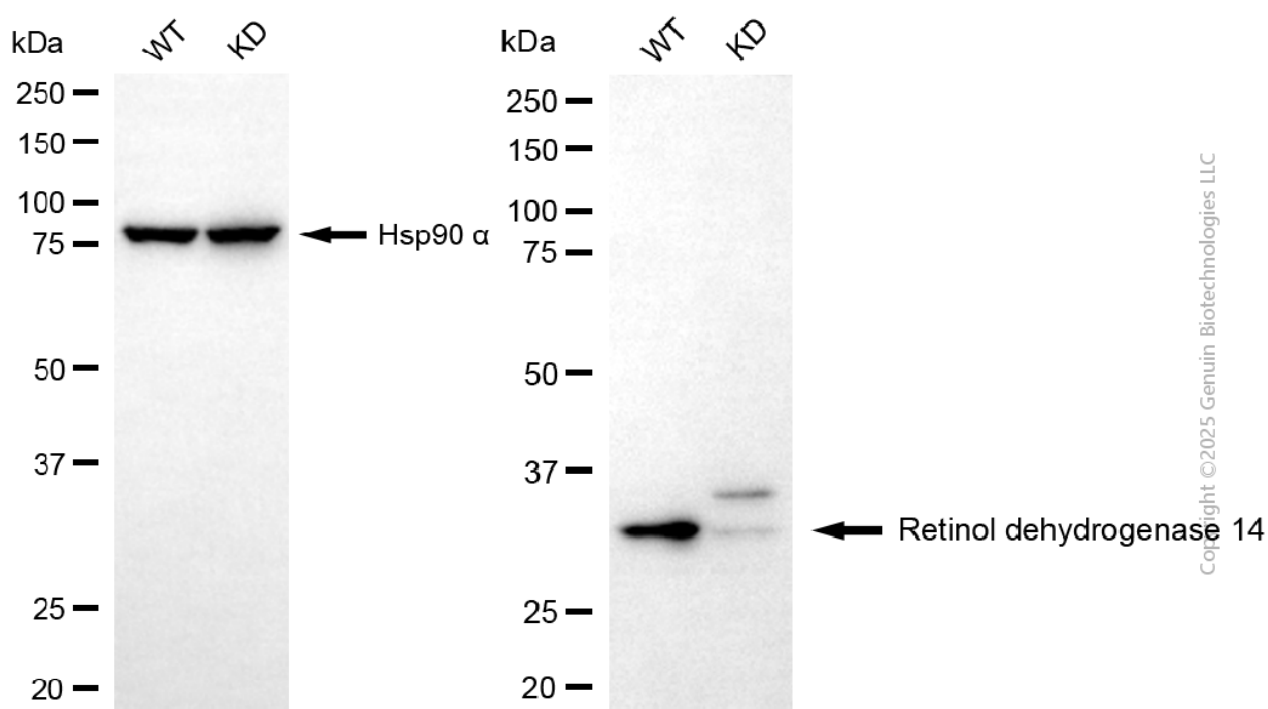
WWW.GENUINBIOTECH.COM



Western blotting analysis using anti-retinol dehydrogenase 14 antibody (Cat#65035). Total cell lysates (30 µg) from various cell lines were loaded and separated by SDS-PAGE. The blot was incubated with anti-retinol dehydrogenase 14 antibody (Cat#65035, 1:500) and HRP-conjugated goat anti-mouse secondary antibody (Cat#101, 1:20,000) respectively. Image was developed using FeQ™ ECL Substrate Kit (Cat#226).

KD-Validated Anti-RDH14 Mouse Monoclonal Antibody

PAGE 3



Western blotting analysis using anti-retinol dehydrogenase 14 antibody (Cat#65035). Retinol dehydrogenase 14 expression in wild-type (WT) and retinol dehydrogenase 14 (RDH14) knockdown (KD) HT-1080 cells with 30 µg of total cell lysates. Hsp90 α serves as a loading control. The blot was incubated with anti-retinol dehydrogenase 14 antibody (Cat#65035, 1:1,000) and HRP-conjugated goat anti-mouse secondary antibody (Cat#101, 1:20,000) respectively. Image was developed using FeQ™ ECL Substrate Kit (Cat#226).

SUPPORT

SUPPORT@GENUINBIOTECH.COM
TEL: +1-540-855-7041

ORDERS

SALES@GENUINBIOTECH.COM
FAX: +1-540-855-7041

WWW.GENUINBIOTECH.COM