

KD-Validated Anti-MAPRE2 Mouse Monoclonal Antibody



Catalog #: 65036

Aliases

MAPRE2; Microtubule Associated Protein RP/EB Family Member 2; RP1; EB2; EB1; Microtubule-Associated Protein RP/EB Family Member 2; APC-Binding Protein EB1; APC-Binding Protein EB2; End-Binding Protein 2; T-Cell Activation Protein, EB1 Family; CSCSC2

Background

Gene Name: MAPRE2

NCBI Gene Entry: [10982](#)

UniProt Entry: [Q15555](#)

Application Information

Molecular Weight: Predicted, 37 kDa; observed, 37 kDa

Clonality: Mouse monoclonal antibody

Clone ID: 24GB13965

Species Reactivity: Human, mouse, rat

Applications Tested: Western blotting (WB), flow cytometry (FCM)

Immunogen

Recombinant protein of human MAPRE2

Isotype

Mouse IgG2a

Storage Buffer

Supplied in PBS (pH 7.4) containing 50% glycerol, and 0.02% sodium azide.

Storage

Store at -20 °C for one year.

Recommended Dilutions

Western Blotting (WB): 1:500-1:2,500

Flow Cytometry (FCM): 1:1,000

Note: This product is for research use only.

Validation Data

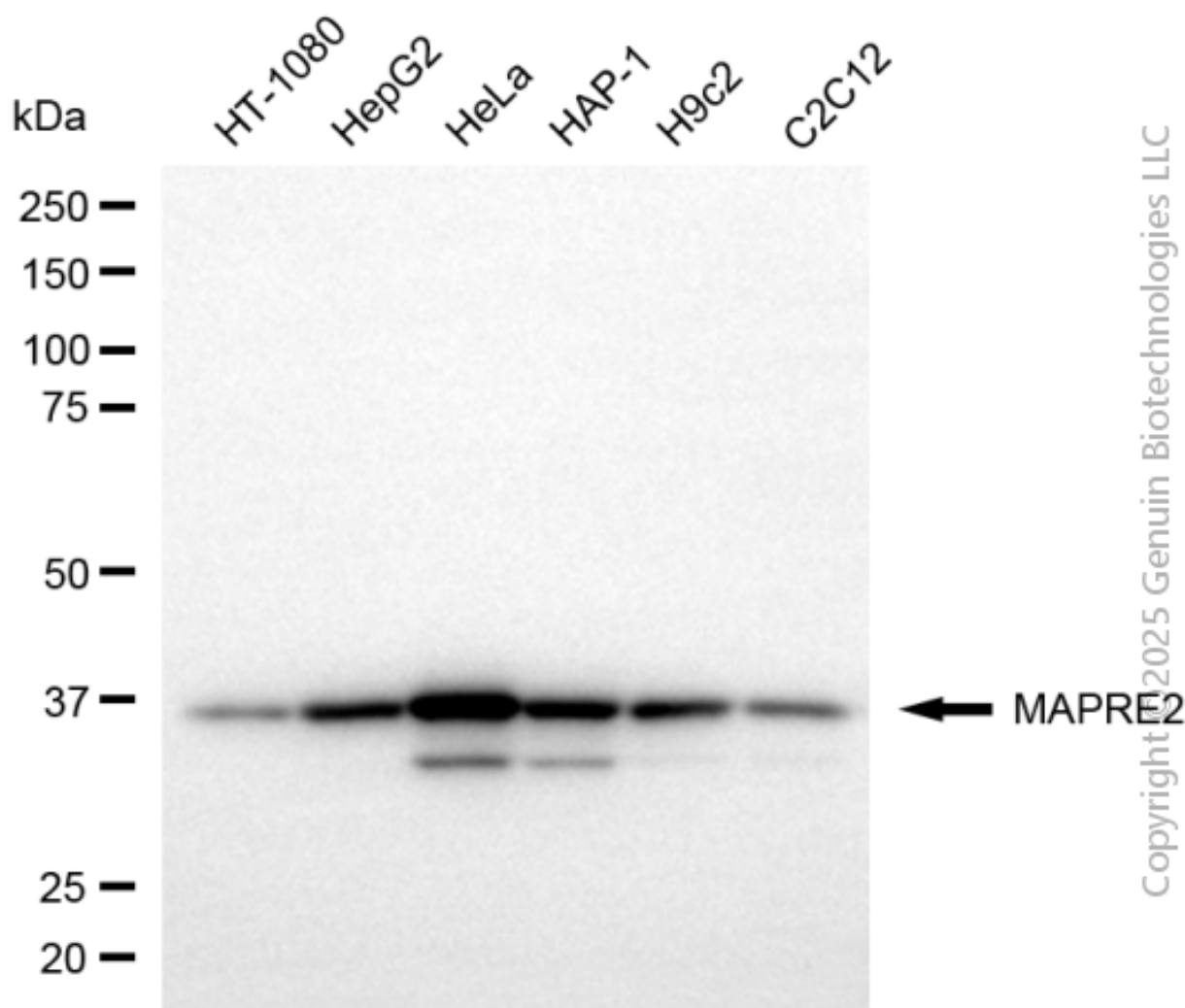
SUPPORT

SUPPORT@GENUINBIOTECH.COM
TEL: +1-540-855-7041

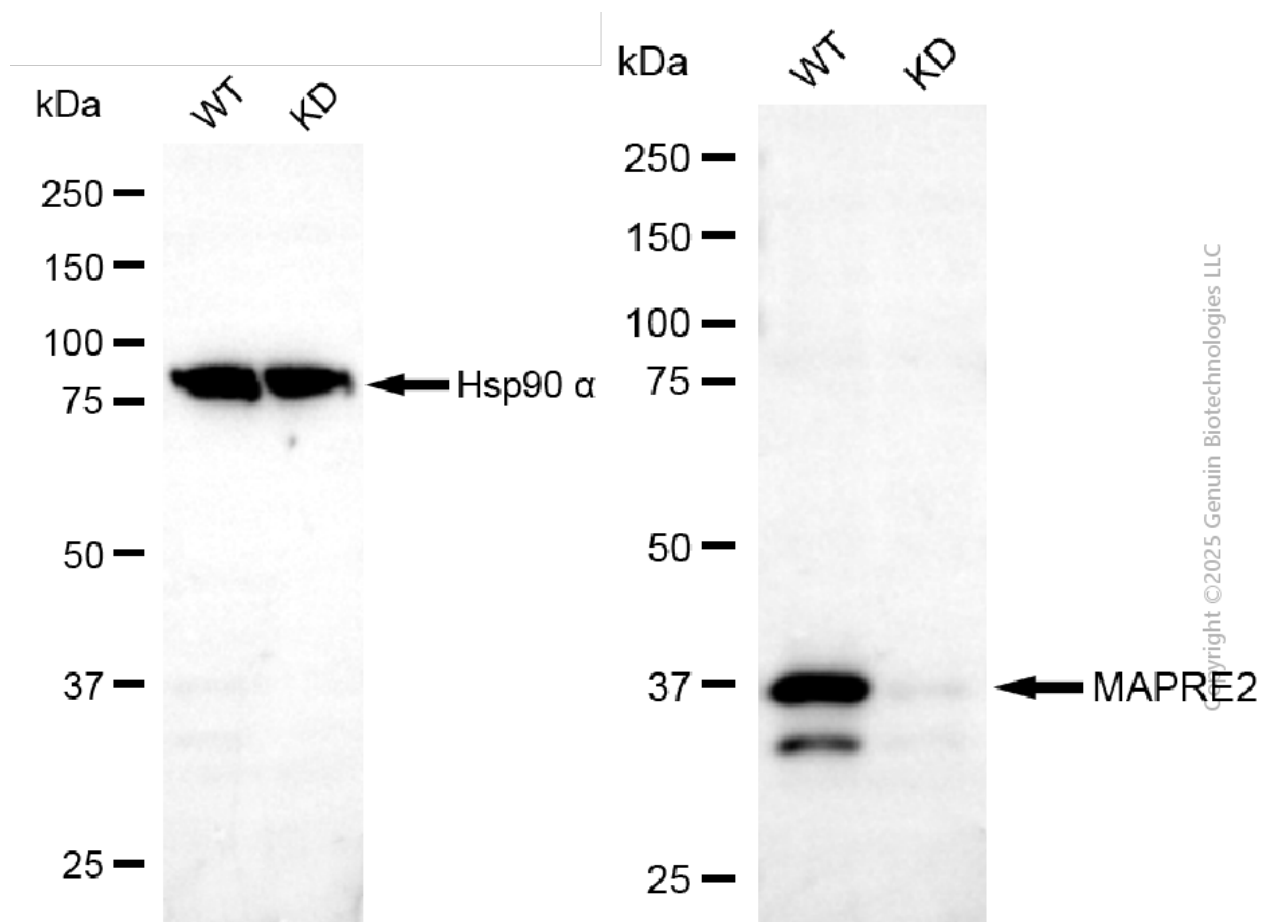
ORDERS

SALES@GENUINBIOTECH.COM
FAX: +1-540-855-7041

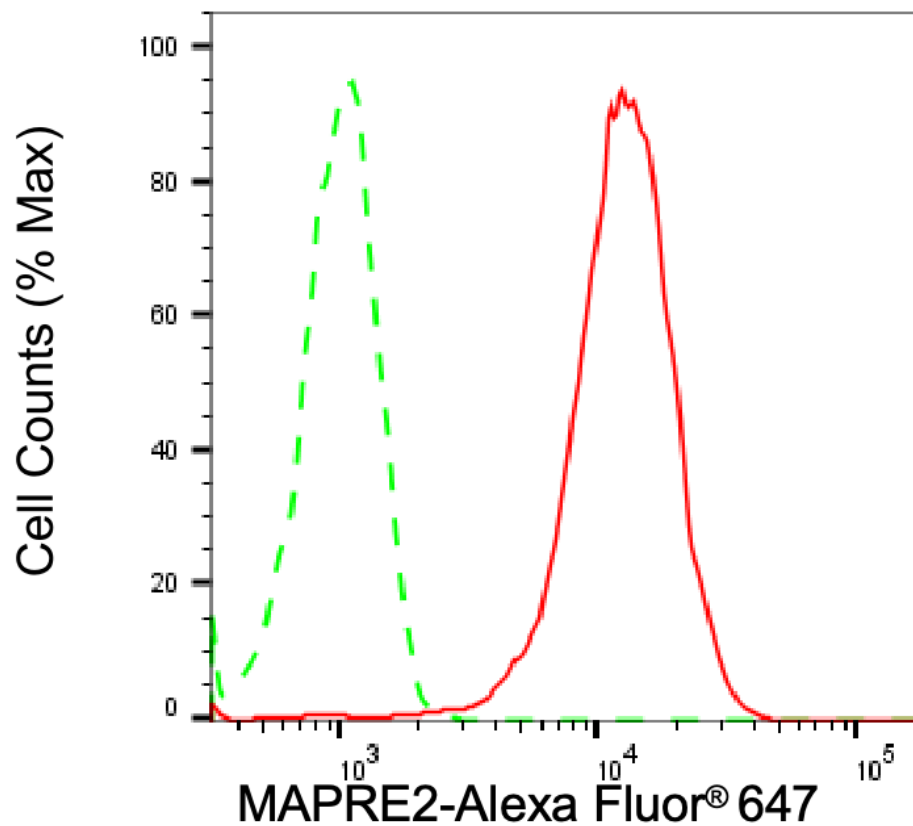
WWW.GENUINBIOTECH.COM



Western blotting analysis using anti-MAPRE2 antibody (Cat#65036). Total cell lysates (30 µg) from various cell lines were loaded and separated by SDS-PAGE. The blot was incubated with anti-MAPRE2 antibody (Cat#65036, 1:2,500) and HRP-conjugated goat anti-mouse secondary antibody (Cat#101, 1:20,000) respectively. Image was developed using FeQ™ ECL Substrate Kit (Cat#226).



Western blotting analysis using anti-MAPRE2 antibody (Cat#65036). MAPRE2 expression in wild-type (WT) and MAPRE2 knockdown (KD) HeLa cells with 20 µg of total cell lysates. Hsp90 α serves as a loading control. The blot was incubated with anti-MAPRE2 antibody (Cat#65036, 1:2,500) and HRP-conjugated goat anti-mouse secondary antibody (Cat#101, 1:20,000) respectively. Image was developed using NaQ™ ECL Substrate Kit (Cat#716).



Copyright ©2025 Genuin Biotechnologies LLC

Flow cytometric analysis of MAPRE2 expression in HeLa cells using anti-MAPRE2 antibody (Cat#65036, 1:1,000). Green, isotype control; red, MAPRE2.