

# KD-Validated Anti-PPM1B Mouse Monoclonal Antibody



**Catalog #: 65037**

## Aliases

PPM1B; Protein Phosphatase, Mg<sup>2+</sup>/Mn<sup>2+</sup> Dependent 1B; PP2CB; PPC2BETAX; PP2CBETA; Protein Phosphatase 1B; EC 3.1.3.16; PP2C-Beta; Protein Phosphatase 1B (Formerly 2C), Magnesium-Dependent, Beta Isoform; Protein Phosphatase, Mg<sup>2+</sup>/Mn<sup>2+</sup> Dependent, 1B; Protein Phosphatase 2C, Beta Isoform; Protein Phosphatase 2C-Like Protein; Protein Phosphatase 2C Isoform Beta; PP2C-Beta-X

## Background

Gene Name: PPM1B

NCBI Gene Entry: [5495](#)

UniProt Entry: [O75688](#)

## Application Information

Molecular Weight: Predicted, 53 kDa; observed, 39,53 kDa

Clonality: Mouse monoclonal antibody

Clone ID: 24GB13970

Species Reactivity: Human, mouse, rat

Applications Tested: Western blotting (WB), immunocytochemistry (IC), flow cytometry (FCM)

## Immunogen

Recombinant protein of human PPM1B

## Isotype

Mouse IgG1

## Storage Buffer

Supplied in PBS (pH 7.4) containing 50% glycerol, and 0.02% sodium azide.

## Storage

Store at -20 °C for one year.

## Recommended Dilutions

Western Blotting (WB): 1:500-1:2,500

Immunocytochemistry (IC): 1:100-1:1,000

Flow Cytometry (FCM): 1:1,000

---

### SUPPORT

SUPPORT@GENUINBIOTECH.COM  
TEL: +1-540-855-7041

### ORDERS

SALES@GENUINBIOTECH.COM  
FAX: +1-540-855-7041

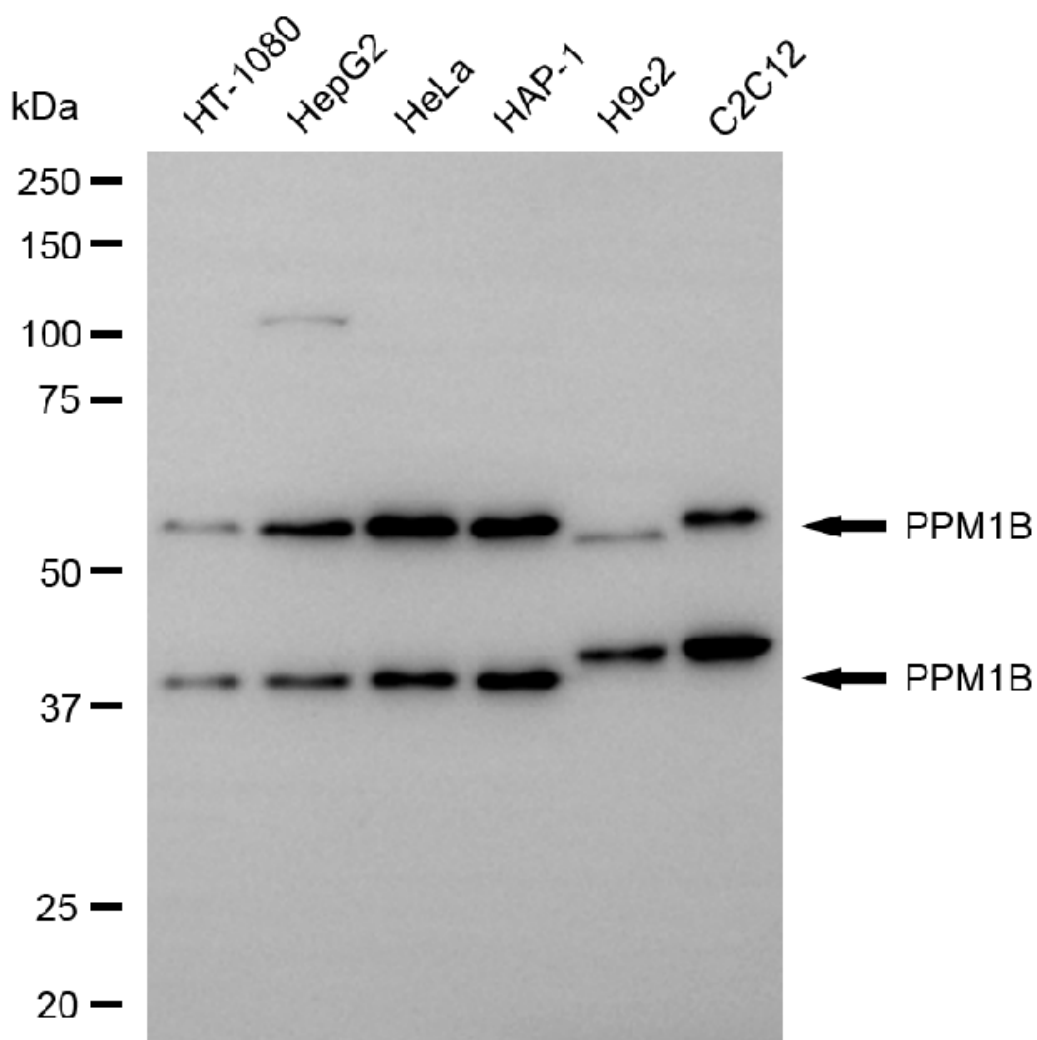
[WWW.GENUINBIOTECH.COM](http://WWW.GENUINBIOTECH.COM)

## KD-Validated Anti-PPM1B Mouse Monoclonal Antibody

PAGE 2

**Note:** This product is for research use only.

### Validation Data



Copyright ©2025 Genuin Biotechnologies LLC

Western blotting analysis using anti-PPM1B antibody (Cat#65037). Total cell lysates (30 µg) from various cell lines were loaded and separated by SDS-PAGE. The blot was incubated with anti-PPM1B antibody (Cat#65037, 1:2,500) and HRP-conjugated goat anti-mouse secondary antibody (Cat#101, 1:20,000) respectively. Image was developed using FeQ™ ECL Substrate Kit (Cat#226).

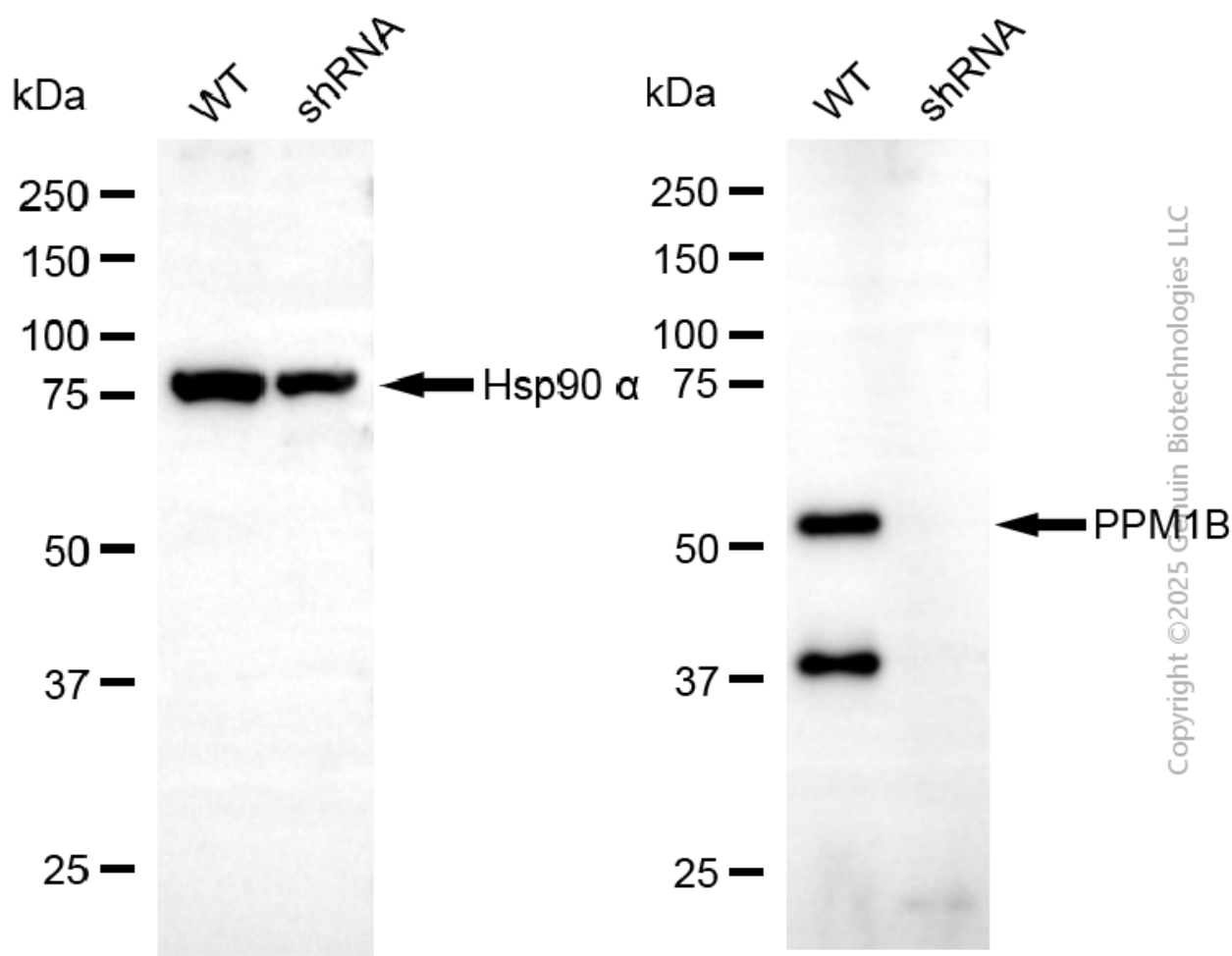
#### SUPPORT

SUPPORT@GENUINBIOTECH.COM  
TEL: +1-540-855-7041

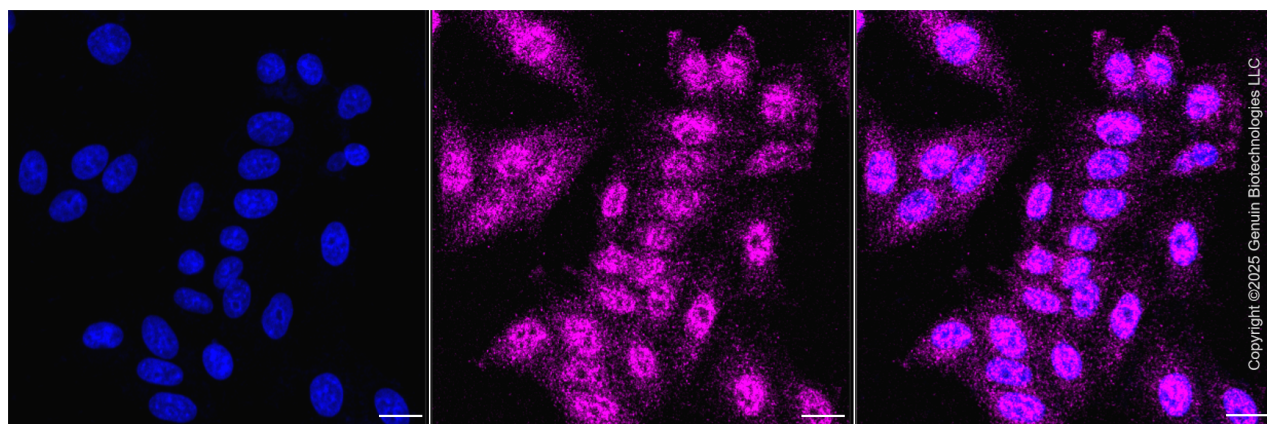
#### ORDERS

SALES@GENUINBIOTECH.COM  
FAX: +1-540-855-7041

WWW.GENUINBIOTECH.COM



Western blotting analysis using anti-PPM1B antibody (Cat#65037). PPM1B expression in wild-type (WT) and PPM1B shRNA knockdown (KD) HeLa cells with 20 µg of total cell lysates. Hsp90 α serves as a loading control. The blot was incubated with anti-PPM1B antibody (Cat#65037, 1:2,500) and HRP-conjugated goat anti-mouse secondary antibody (Cat#101, 1:20,000) respectively. Image was developed using FeQ™ ECL Substrate Kit (Cat#226).



Immunocytochemical staining of HepG2 cells with anti-PPM1B antibody (Cat#65037, 1:1,000) .

## SUPPORT

SUPPORT@GENUINBIOTECH.COM  
TEL: +1-540-855-7041

## ORDERS

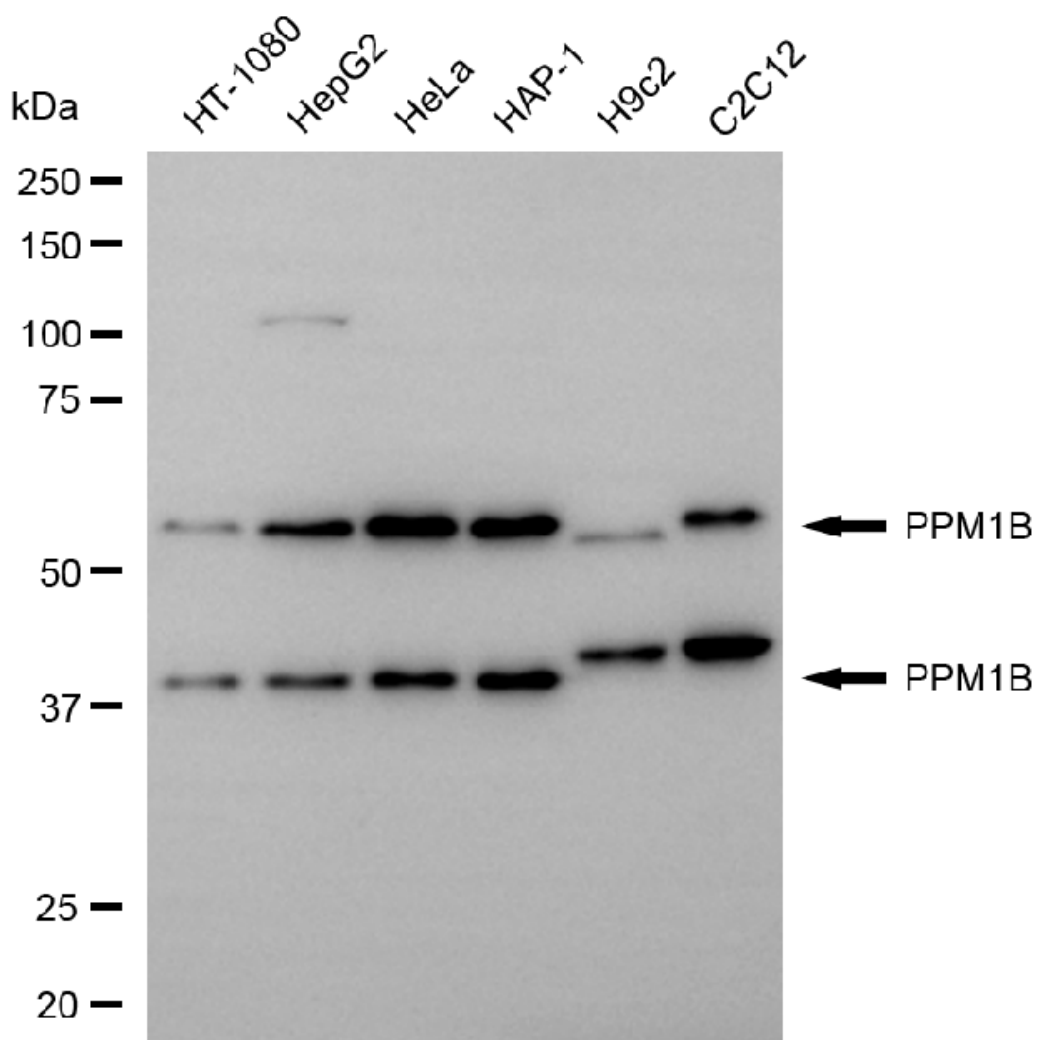
SALES@GENUINBIOTECH.COM  
FAX: +1-540-855-7041

WWW.GENUINBIOTECH.COM

## KD-Validated Anti-PPM1B Mouse Monoclonal Antibody

PAGE 4

Nuclei were stained blue with DAPI; PPM1B was stained magenta with Alexa Fluor® 647. Images were taken using Leica stellaris 5. Protein abundance based on laser Intensity and smart gain: Low. Scale bar, 20  $\mu$ m.



Copyright ©2025 Genuin Biotechnologies LLC

Western blotting analysis using anti-PPM1B antibody (Cat#65037). Total cell lysates (30  $\mu$ g) from various cell lines were loaded and separated by SDS-PAGE. The blot was incubated with anti-PPM1B antibody (Cat#65037, 1:2,500) and HRP-conjugated goat anti-mouse secondary antibody (Cat#101, 1:20,000) respectively. Image was developed using FeQ™ ECL Substrate Kit (Cat#226).

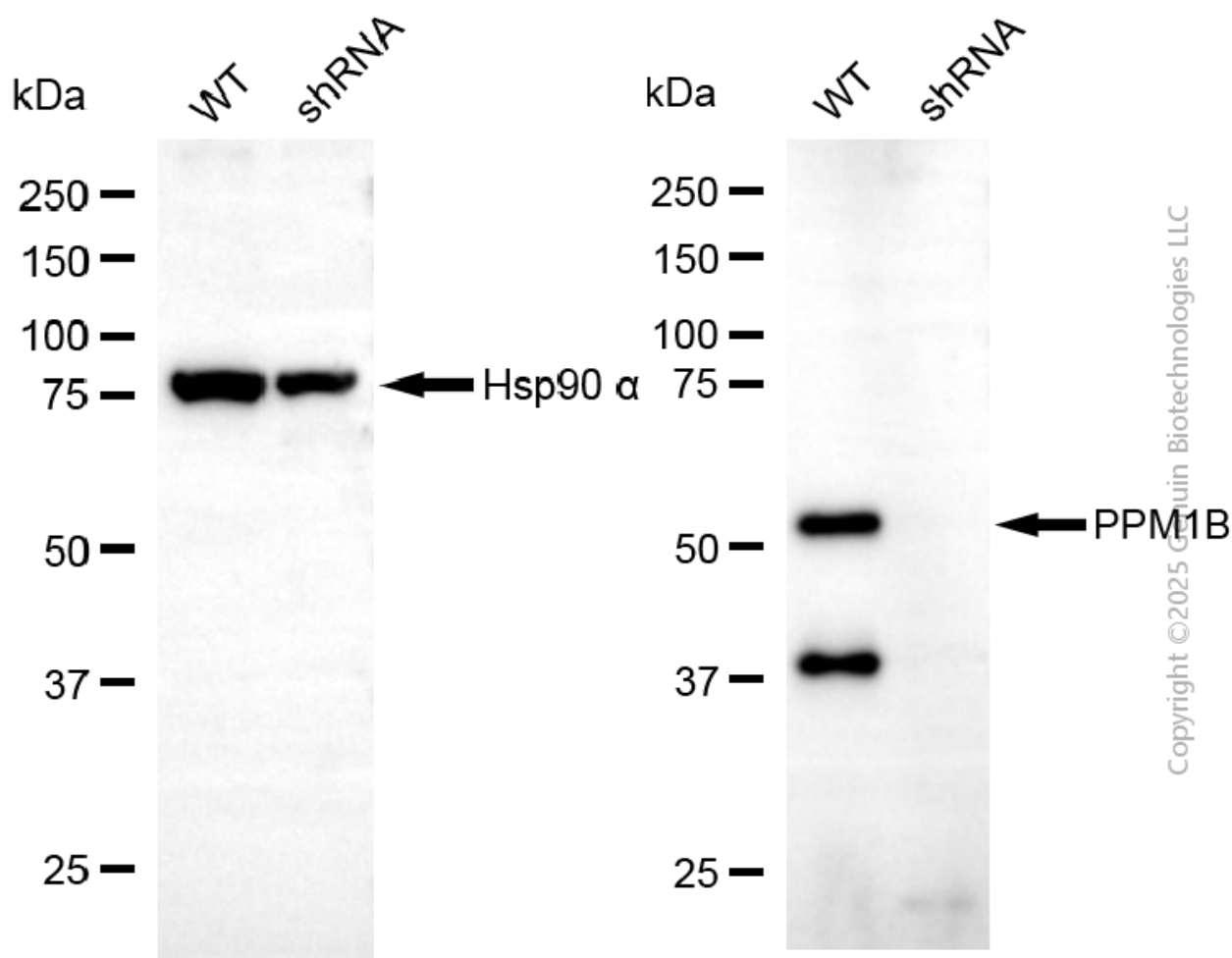
### SUPPORT

SUPPORT@GENUINBIOTECH.COM  
TEL: +1-540-855-7041

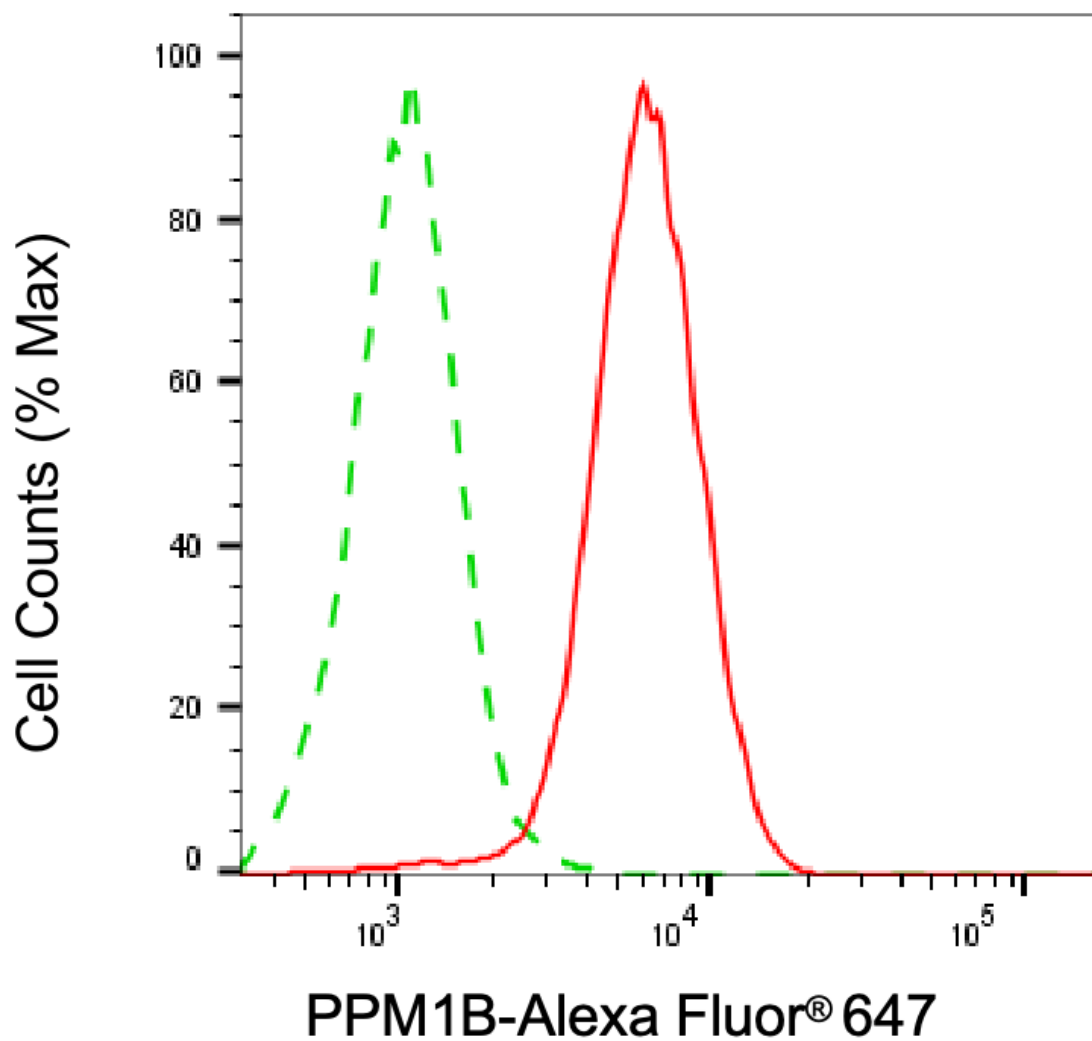
### ORDERS

SALES@GENUINBIOTECH.COM  
FAX: +1-540-855-7041

WWW.GENUINBIOTECH.COM



Western blotting analysis using anti-PPM1B antibody (Cat#65037). PPM1B expression in wild-type (WT) and PPM1B shRNA knockdown (KD) HeLa cells with 20 µg of total cell lysates. Hsp90 α serves as a loading control. The blot was incubated with anti-PPM1B antibody (Cat#65037, 1:2,500) and HRP-conjugated goat anti-mouse secondary antibody (Cat#101, 1:20,000) respectively. Image was developed using FeQ™ ECL Substrate Kit (Cat#226).



Copyright ©2025 Genuin Biotechnologies LLC

Flow cytometric analysis of PPM1B expression in HepG2 cells using anti-PPM1B antibody (Cat#65037, 1:1,000). Green, isotype control; red, PPM1B.