

# KD-Validated Anti-SELENBP1 Mouse Monoclonal Antibody



**Catalog #: 65041**

## Aliases

SELENBP1; Selenium Binding Protein 1; Methanethiol Oxidase; HSBP; LPSB; 56 KDa  
Selenium-Binding Protein; HSP56; SBP56; SP56; MTO; Epididymis Secretory Sperm Binding  
Protein Li 134P; Selenium-Binding Protein 1; HEL-S-134P; EC 1.8.3.4; EHMT0; SBP

## Background

Gene Name: SELENBP1  
NCBI Gene Entry: [8991](#)  
UniProt Entry: [Q13228](#)

## Application Information

Molecular Weight: Predicted, 52 kDa; observed, 50 kDa  
Clonality: Mouse monoclonal antibody  
Clone ID: 24GB13995  
Species Reactivity: Human  
Applications Tested: Western blotting (WB)

## Immunogen

Recombinant protein of human SELENBP1

## Isotype

Mouse IgG2a

## Storage Buffer

Supplied in PBS (pH 7.4) containing 50% glycerol, and 0.02% sodium azide.

## Storage

Store at -20 °C for one year.

## Recommended Dilutions

Western Blotting (WB): 1:500-1:2,500

**Note:** This product is for research use only.

## Validation Data

---

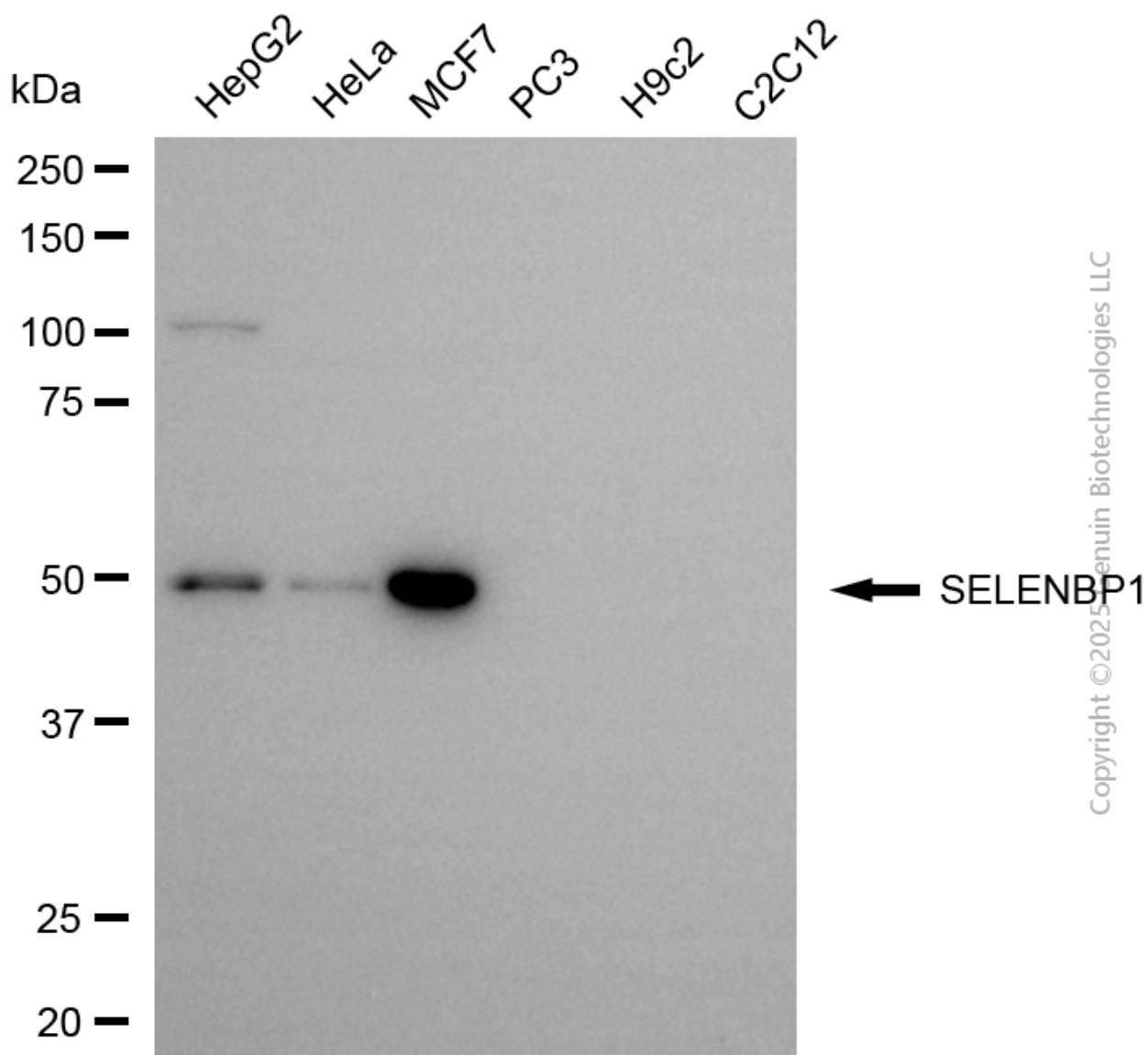
### SUPPORT

SUPPORT@GENUINBIOTECH.COM  
TEL: +1-540-855-7041

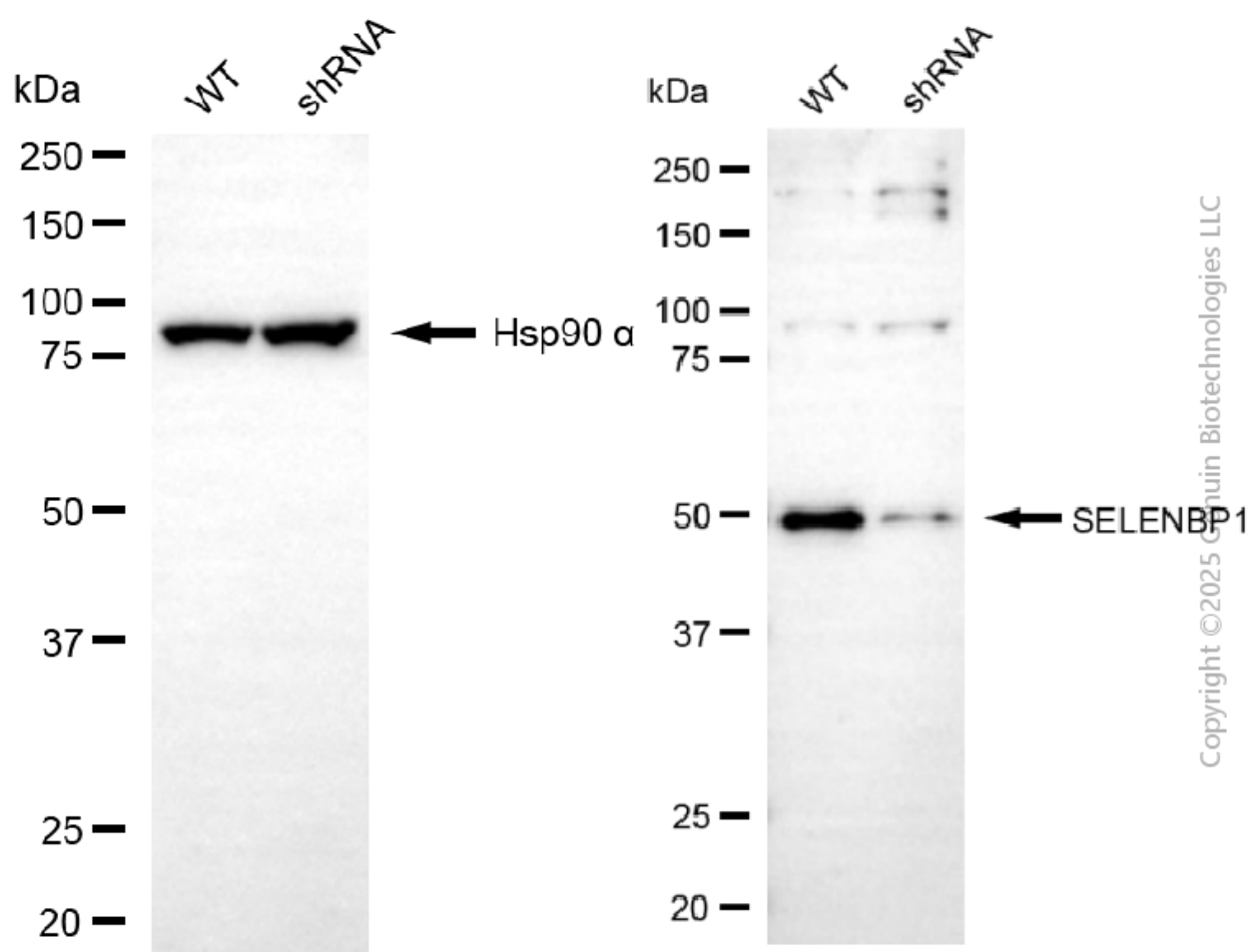
### ORDERS

SALES@GENUINBIOTECH.COM  
FAX: +1-540-855-7041

[WWW.GENUINBIOTECH.COM](http://WWW.GENUINBIOTECH.COM)



Western blotting analysis using anti-SELENBP1 antibody (Cat#65041). Total cell lysates (30  $\mu$ g) from various cell lines were loaded and separated by SDS-PAGE. The blot was incubated with anti-SELENBP1 antibody (Cat#65041, 1:2,500) and HRP-conjugated goat anti-mouse secondary antibody (Cat#101, 1:20,000) respectively. Image was developed using FeQ™ ECL Substrate Kit (Cat#226).



Western blotting analysis using anti-SELENBP1 antibody (Cat#65041). SELENBP1 expression in wild-type (WT) and SELENBP1 shRNA knockdown (KD) HeLa cells with 20 µg of total cell lysates. Hsp90 α serves as a loading control. The blot was incubated with anti-SELENBP1 antibody (Cat#65041, 1:2,500) and HRP-conjugated goat anti-mouse secondary antibody (Cat#101, 1:20,000) respectively. Image was developed using FeQ™ ECL Substrate Kit (Cat#226).