

# KD-Validated Anti-HERPUD1 Mouse Monoclonal Antibody



**Catalog #: 65049**

## Aliases

HERPUD1; Homocysteine Inducible ER Protein With Ubiquitin Like Domain 1; HERP; KIAA0025; Mif1; SUP; Homocysteine-Inducible, Endoplasmic Reticulum Stress-Inducible, Ubiquitin-Like Domain Member 1; Homocysteine-Responsive Endoplasmic Reticulum-Resident Ubiquitin-Like Domain Member 1 Protein; Methyl Methanesulfonate (MMF)-Inducible Fragment Protein 1; omocysteine-Inducible Endoplasmic Reticulum Stress-Inducible Ubiquitin-Like Domain Member 1 Protein; MMS-Inducible; MIF1

## Background

Gene Name: HERPUD1

NCBI Gene Entry: [9709](#)

UniProt Entry: [Q15011](#)

## Application Information

Molecular Weight: Predicted, 44 kDa; observed, 54 kDa

Clonality: Mouse monoclonal antibody

Clone ID: 24GB14035

Species Reactivity: Human, mouse, rat

Applications Tested: Western blotting (WB), immunocytochemistry (IC), flow cytometry (FCM)

## Immunogen

Recombinant protein of human HERPUD1

## Isotype

Mouse IgG2a

## Storage Buffer

Supplied in PBS (pH 7.4) containing 50% glycerol, and 0.02% sodium azide.

## Storage

Store at -20 °C for one year.

## Recommended Dilutions

Western Blotting (WB): 1:1,000-1:5,000

Immunocytochemistry (IC): 1:100-1:1,000

Flow Cytometry (FCM): 1:1,000

---

### SUPPORT

SUPPORT@GENUINBIOTECH.COM  
TEL: +1-540-855-7041

### ORDERS

SALES@GENUINBIOTECH.COM  
FAX: +1-540-855-7041

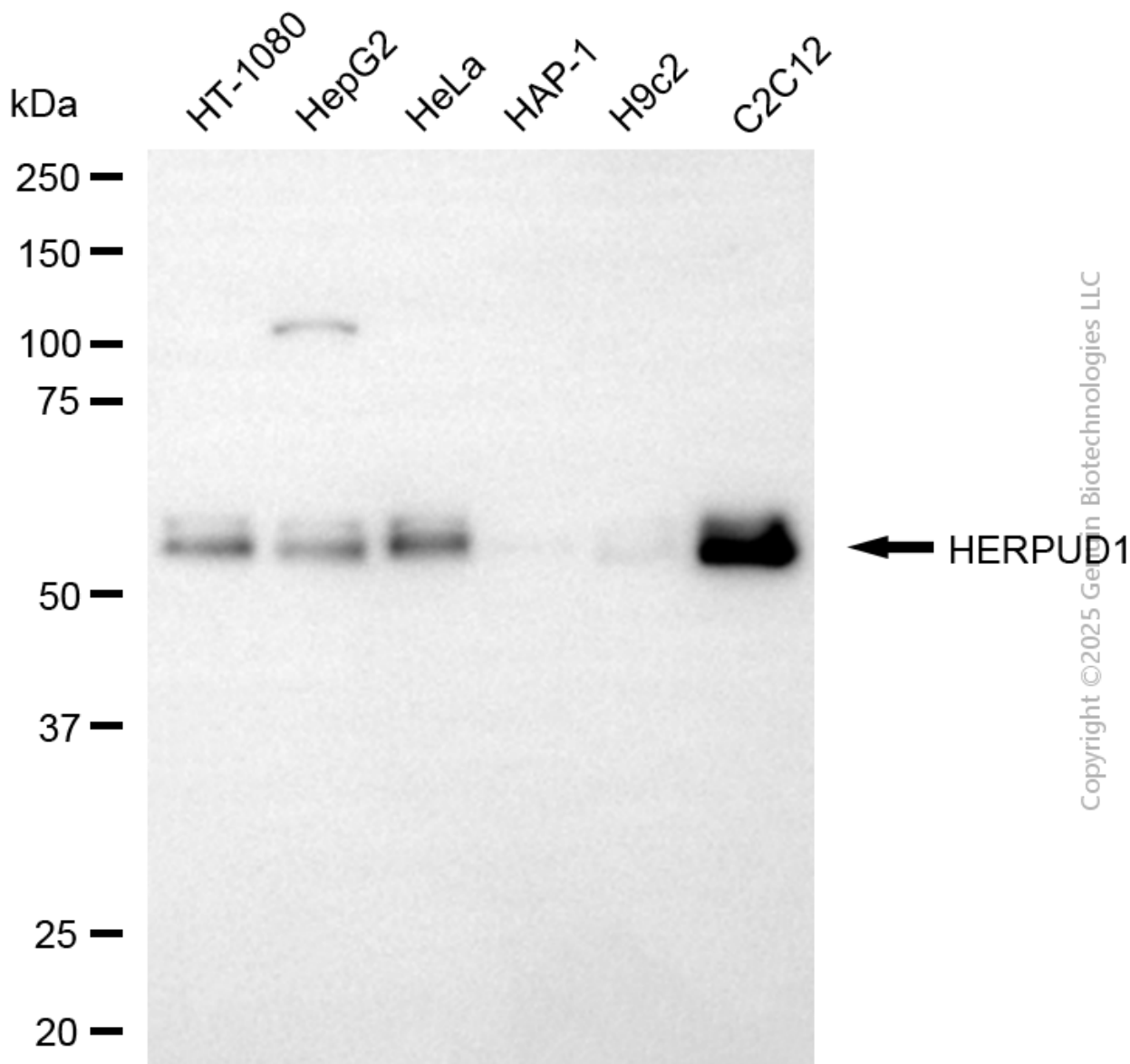
[WWW.GENUINBIOTECH.COM](http://WWW.GENUINBIOTECH.COM)

## KD-Validated Anti-HERPUD1 Mouse Monoclonal Antibody

PAGE 2

**Note:** This product is for research use only.

### Validation Data



Western blotting analysis using anti-HERPUD1 antibody (Cat#65049). Total cell lysates (30  $\mu$ g) from various cell lines were loaded and separated by SDS-PAGE. The blot was incubated with anti-HERPUD1 antibody (Cat#65049, 1:5,000) and HRP-conjugated goat anti-mouse secondary antibody (Cat#101, 1:20,000) respectively. Image was developed using FeQ™ ECL Substrate Kit (Cat#226).

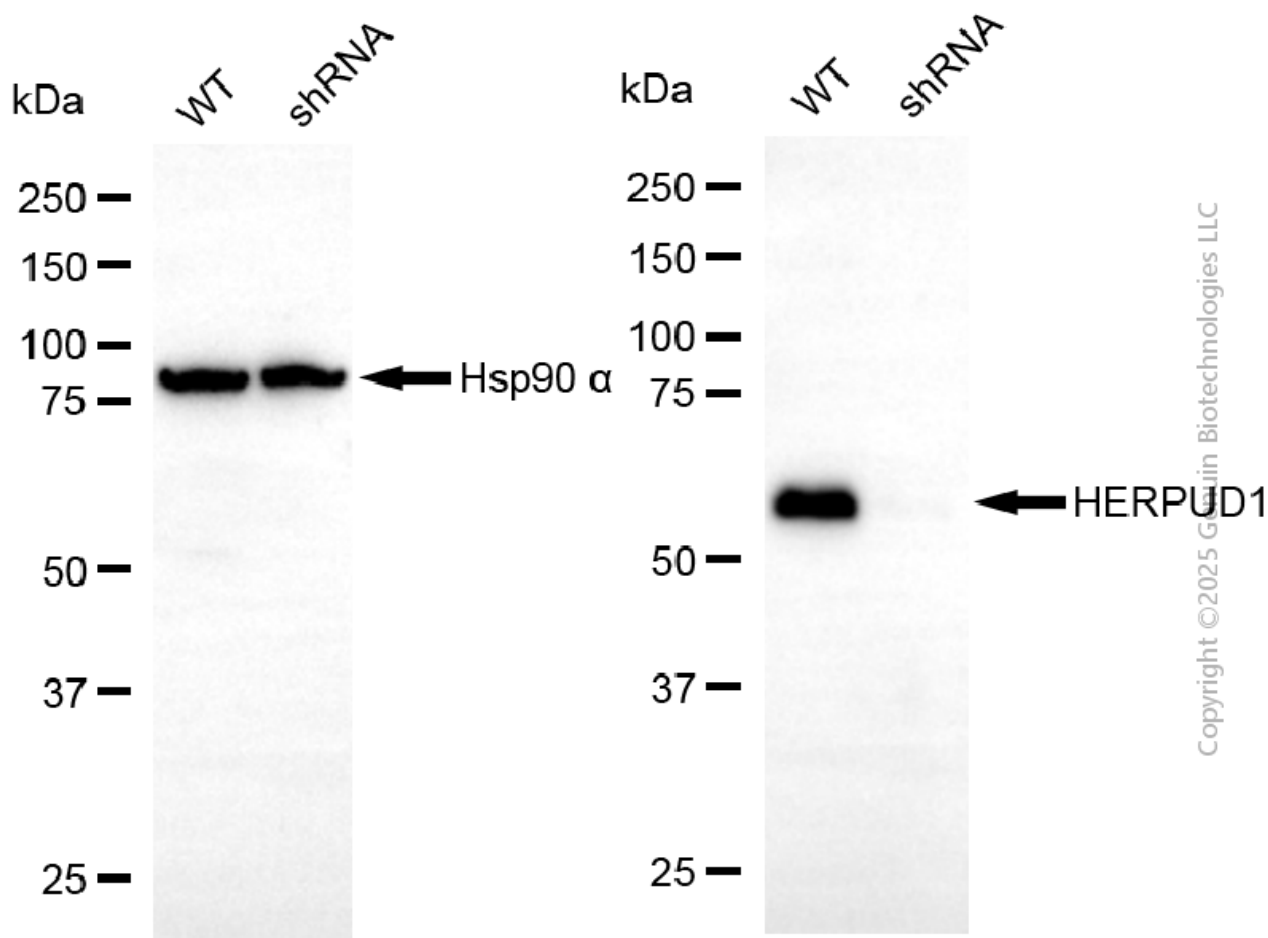
#### SUPPORT

SUPPORT@GENUINBIOTECH.COM  
TEL: +1-540-855-7041

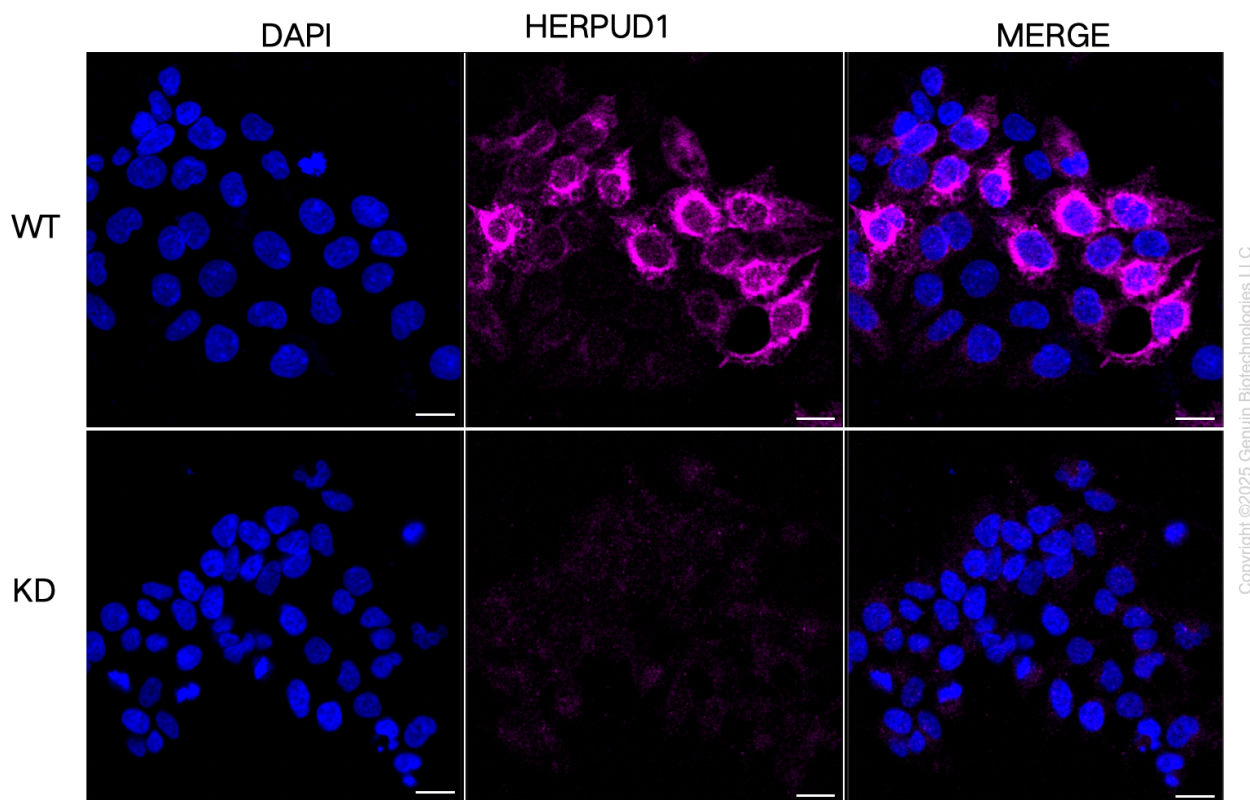
#### ORDERS

SALES@GENUINBIOTECH.COM  
FAX: +1-540-855-7041

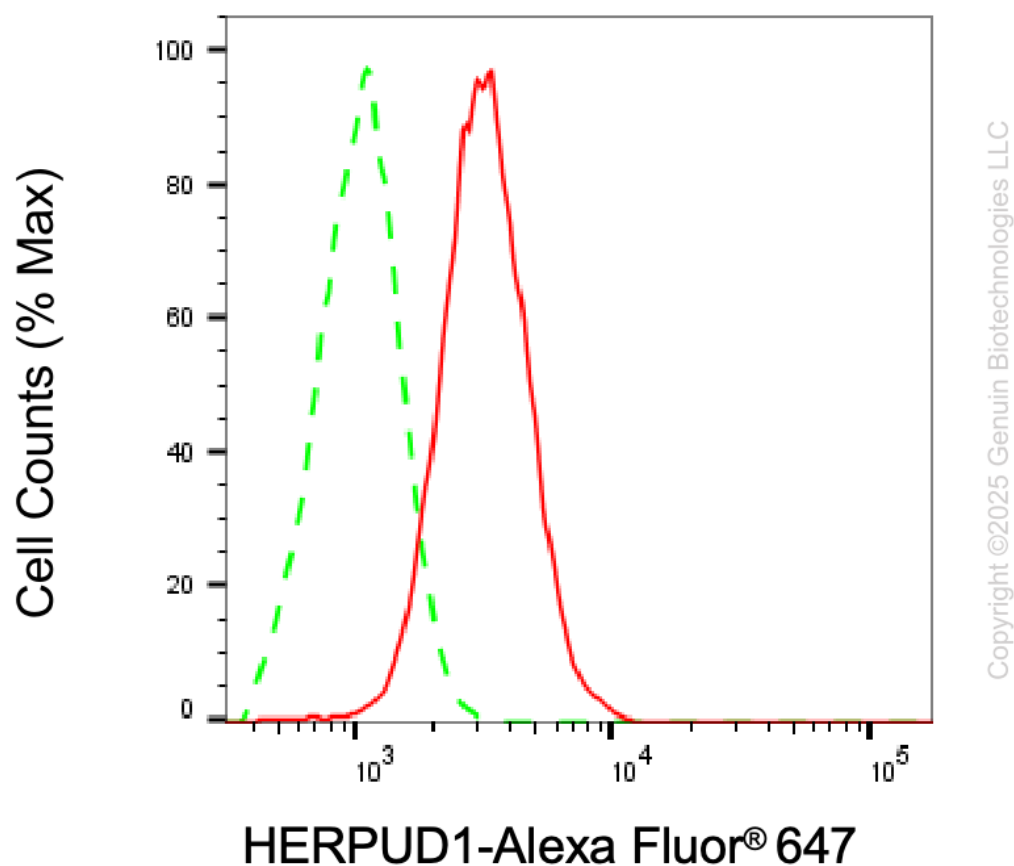
WWW.GENUINBIOTECH.COM



Western blotting analysis using anti-HERPUD1 antibody (Cat#65049). HERPUD1 expression in wild-type (WT) and HERPUD1 shRNA knockdown (KD) HeLa cells with 30 µg of total cell lysates. Hsp90 α serves as a loading control. The blot was incubated with anti-HERPUD1 antibody (Cat#65049, 1:2,500) and HRP-conjugated goat anti-mouse secondary antibody (Cat#101, 1:20,000) respectively. Image was developed using FeQ™ ECL Substrate Kit (Cat#226).



Immunocytochemical staining of HeLa cells using anti-HERPUD1 antibody (Cat#65049, 1:1,000), Top panel: wild-type (WT); Bottom panel: HERPUD1 shRNA knockdown (KD). Nuclei were stained blue with DAPI; HERPUD1 was stained magenta with Alexa Fluor® 647. Scale bar, 20  $\mu$ m.



Flow cytometric analysis of HERPUD1 expression in C2C12 cells using anti-HERPUD1 antibody (Cat#65049, 1:1,000). Green, isotype control; red, HERPUD1.