

# KD-Validated Anti-CEP55 Mouse Monoclonal Antibody



**Catalog #: 65058**

## Aliases

CEP55; Centrosomal Protein 55; C10orf3; CT111; Up-Regulated In Colon Cancer 6; Centrosomal Protein Of 55 KDa; Cancer/Testis Antigen 111; Centrosomal Protein 55kDa; FLJ10540; URCC6; Chromosome 10 Open Reading Frame 3; MARCH; Cep55

## Background

Gene Name: CEP55

NCBI Gene Entry: [55165](#)

UniProt Entry: [Q53EZ4](#)

## Application Information

Molecular Weight: Predicted, 54 kDa; observed, 54 kDa

Clonality: Mouse monoclonal antibody

Clone ID: 24GB14080

Species Reactivity: Human

Applications Tested: Western blotting (WB), flow cytometry (FCM)

## Immunogen

Recombinant protein of human CEP55

## Isotype

Mouse IgG1

## Storage Buffer

Supplied in PBS (pH 7.4) containing 50% glycerol, and 0.02% sodium azide.

## Storage

Store at -20 °C for one year.

## Recommended Dilutions

Western Blotting (WB): 1:500-1:2,500

Flow Cytometry (FCM): 1:1,000

**Note:** This product is for research use only.

## Validation Data

---

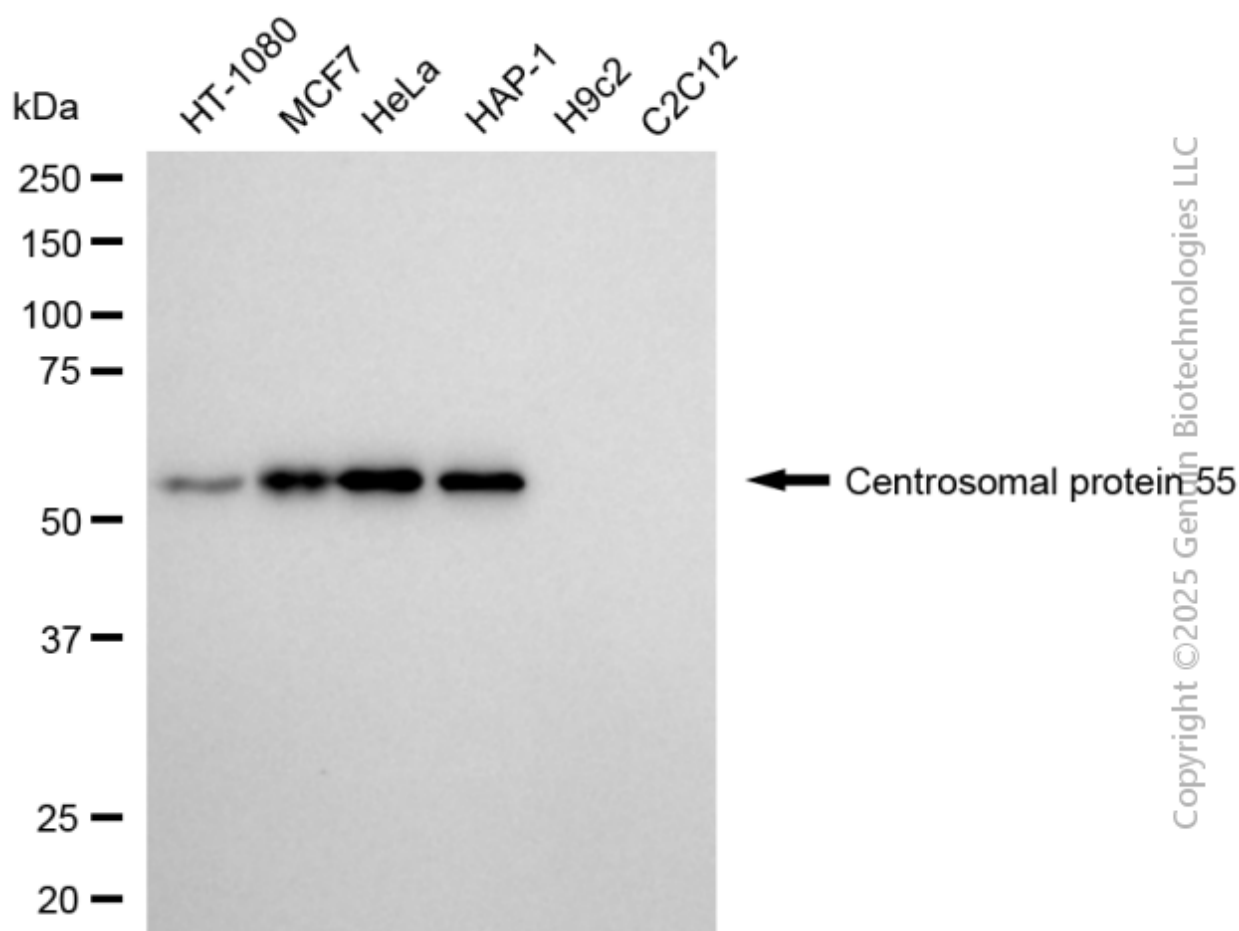
### SUPPORT

SUPPORT@GENUINBIOTECH.COM  
TEL: +1-540-855-7041

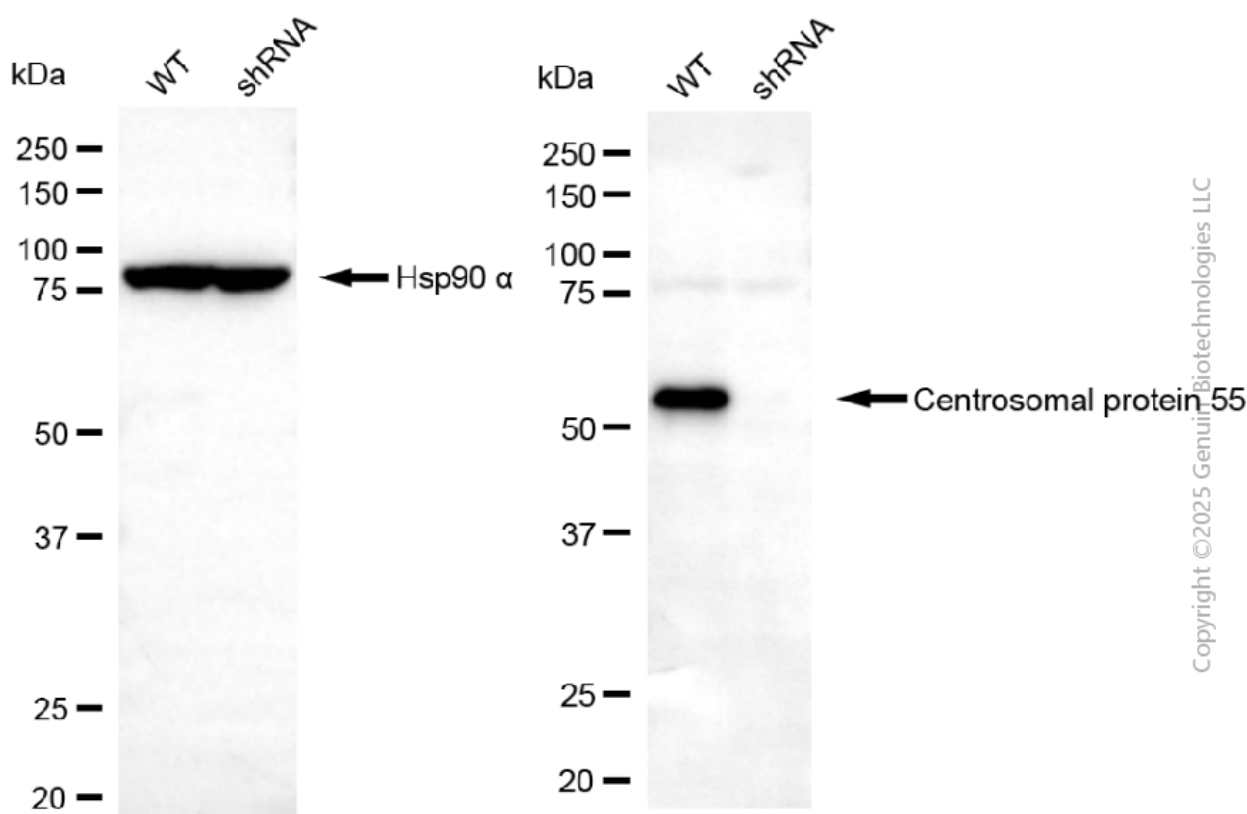
### ORDERS

SALES@GENUINBIOTECH.COM  
FAX: +1-540-855-7041

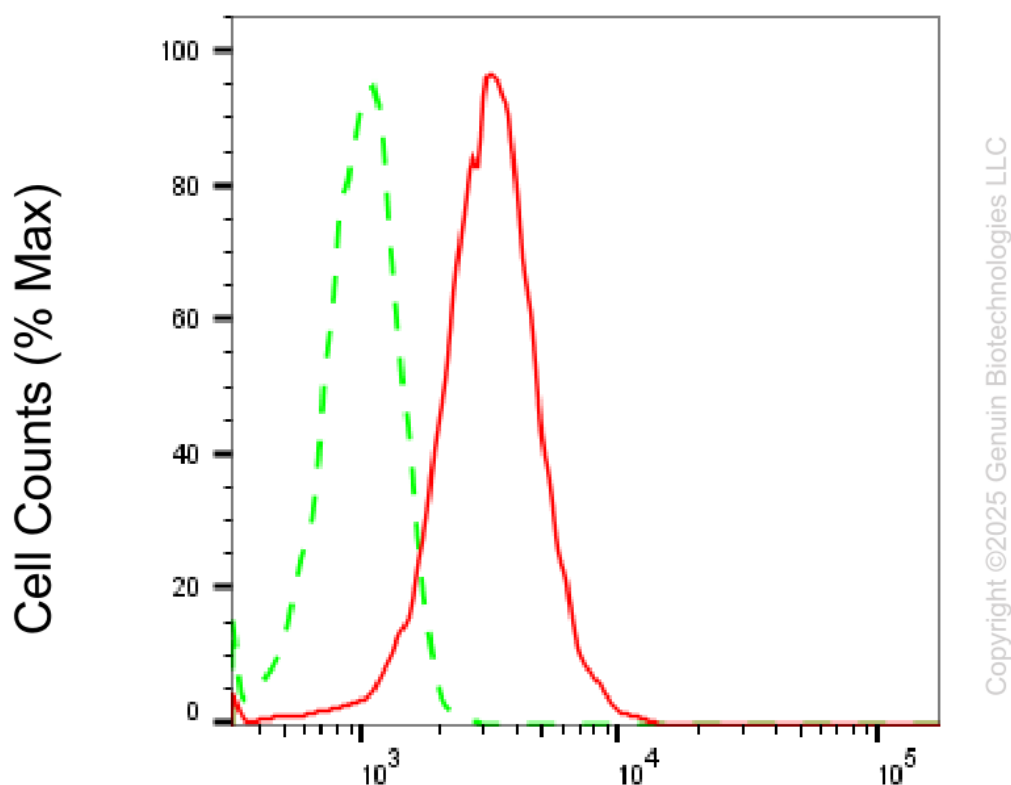
[WWW.GENUINBIOTECH.COM](http://WWW.GENUINBIOTECH.COM)



Western blotting analysis using anti-centrosomal protein 55 antibody (Cat#65058). Total cell lysates (30  $\mu$ g) from various cell lines were loaded and separated by SDS-PAGE. The blot was incubated with anti-centrosomal protein 55 antibody (Cat#65058, 1:2,500) and HRP-conjugated goat anti-mouse secondary antibody (Cat#101, 1:20,000) respectively. Image was developed using FeQ™ ECL Substrate Kit (Cat#226).



Western blotting analysis using anti-centrosomal protein 55 antibody (Cat#65058). Centrosomal protein 55 expression in wild-type (WT) and centrosomal protein 55 (CEP55) shRNA knockdown (KD) HeLa cells with 20 µg of total cell lysates. Hsp90 α serves as a loading control. The blot was incubated with anti-centrosomal protein 55 antibody (Cat#65058, 1:2,500) and HRP-conjugated goat anti-mouse secondary antibody (Cat#101, 1:20,000) respectively. Image was developed using FeQ™ ECL Substrate Kit (Cat#226).



Flow cytometric analysis of Centrosomal protein 55 expression in HeLa cells using anti-Centrosomal protein 55 antibody (Cat#65058, 1:1,000). Green, isotype control; red, Centrosomal protein 55.