

KD-Validated Anti-PDCL3 Mouse Monoclonal Antibody



Catalog #: 65059

Aliases

PDCL3; Phosducin Like 3; VIAF1; Viral IAP-Associated Factor 1; Phosducin-Like Protein 3; HTPHLP; VIAF-1; PhPL3; IAP-Associated Factor VIAF1; PHLP2A; PhLP2A; PHLP3; VIAF

Background

Gene Name: PDCL3

NCBI Gene Entry: [79031](#)

UniProt Entry: [Q9H2J4](#)

Application Information

Molecular Weight: Predicted, 28 kDa; observed, 35 kDa

Clonality: Mouse monoclonal antibody

Clone ID: 24GB14085

Species Reactivity: Human

Applications Tested: Western blotting (WB), flow cytometry (FCM)

Immunogen

Recombinant protein of human PDCL3

Isotype

Mouse IgG2a

Storage Buffer

Supplied in PBS (pH 7.4) containing 50% glycerol, and 0.02% sodium azide.

Storage

Store at -20 °C for one year.

Recommended Dilutions

Western Blotting (WB): 1:500-1:2,500

Flow Cytometry (FCM): 1:1,000

Note: This product is for research use only.

Validation Data

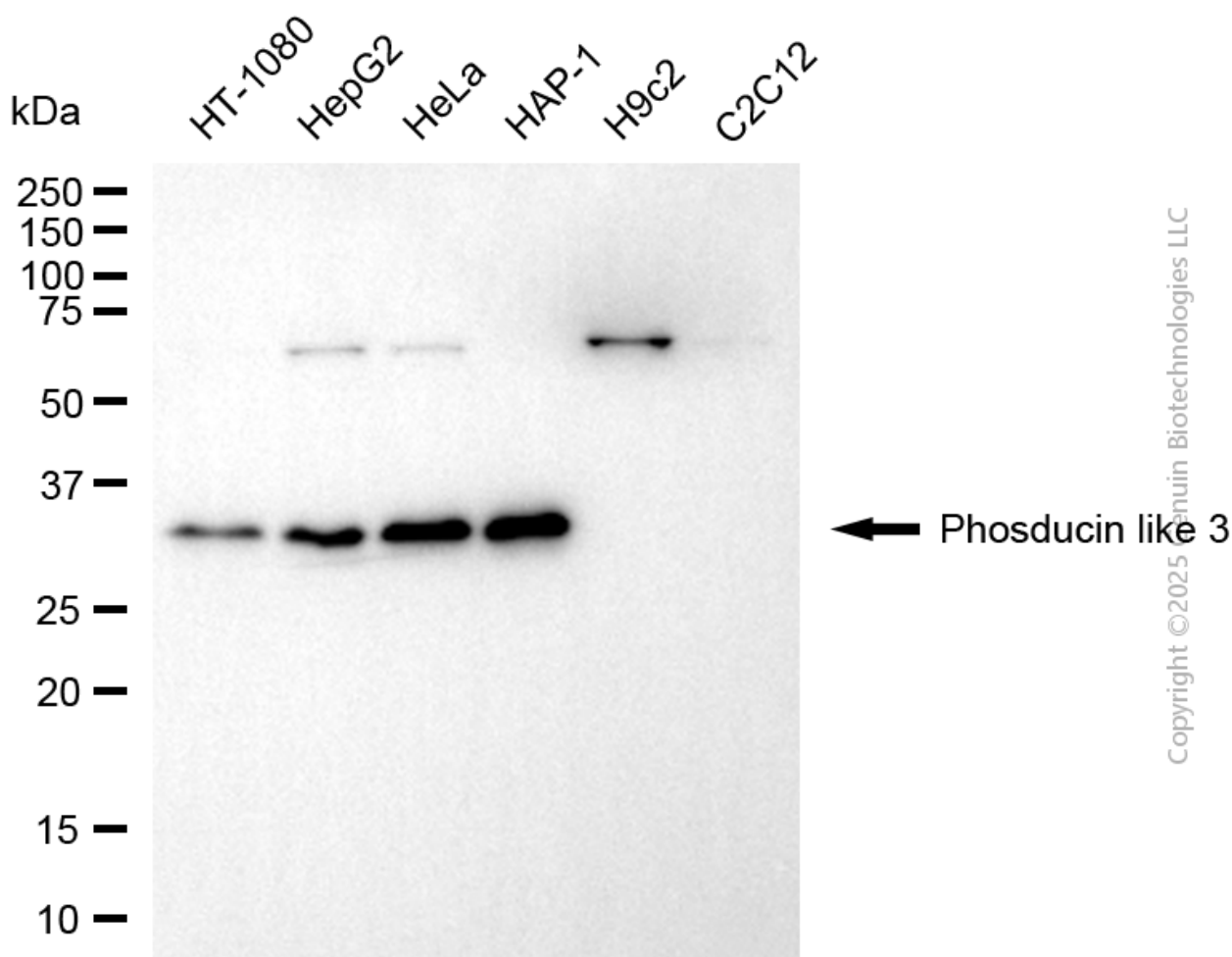
SUPPORT

SUPPORT@GENUINBIOTECH.COM
TEL: +1-540-855-7041

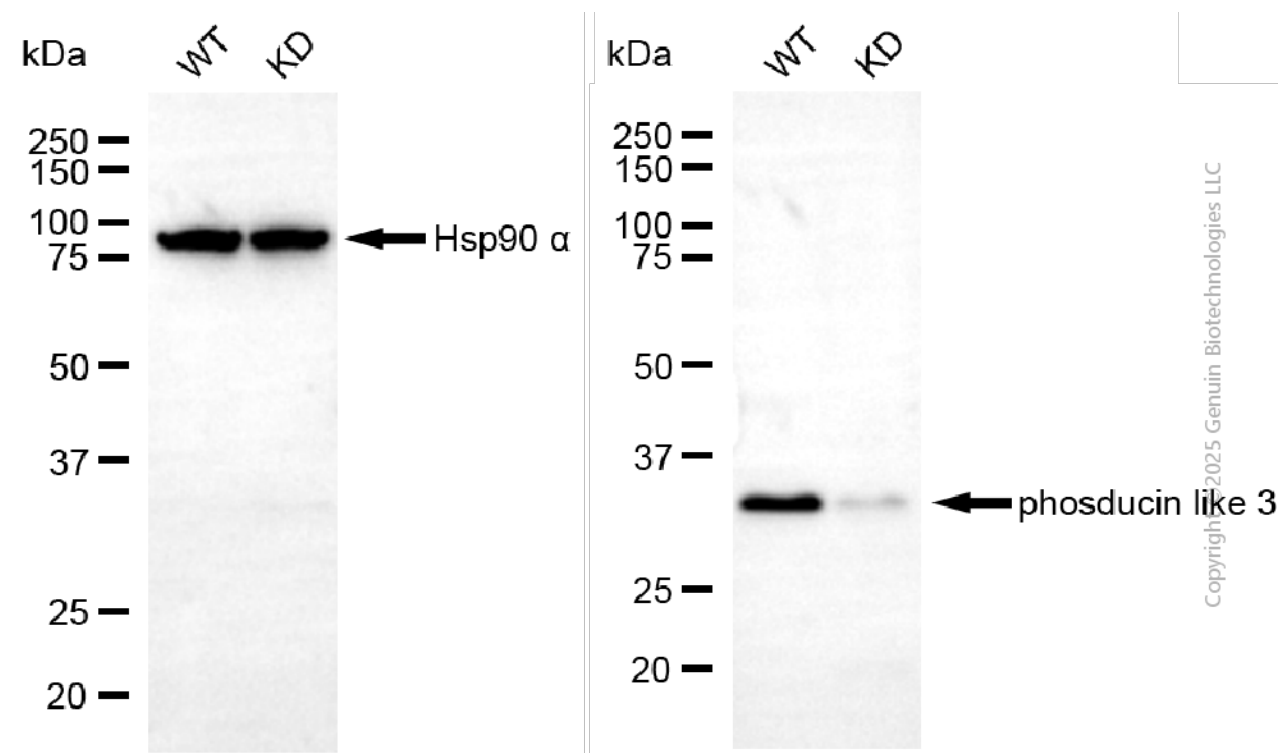
ORDERS

SALES@GENUINBIOTECH.COM
FAX: +1-540-855-7041

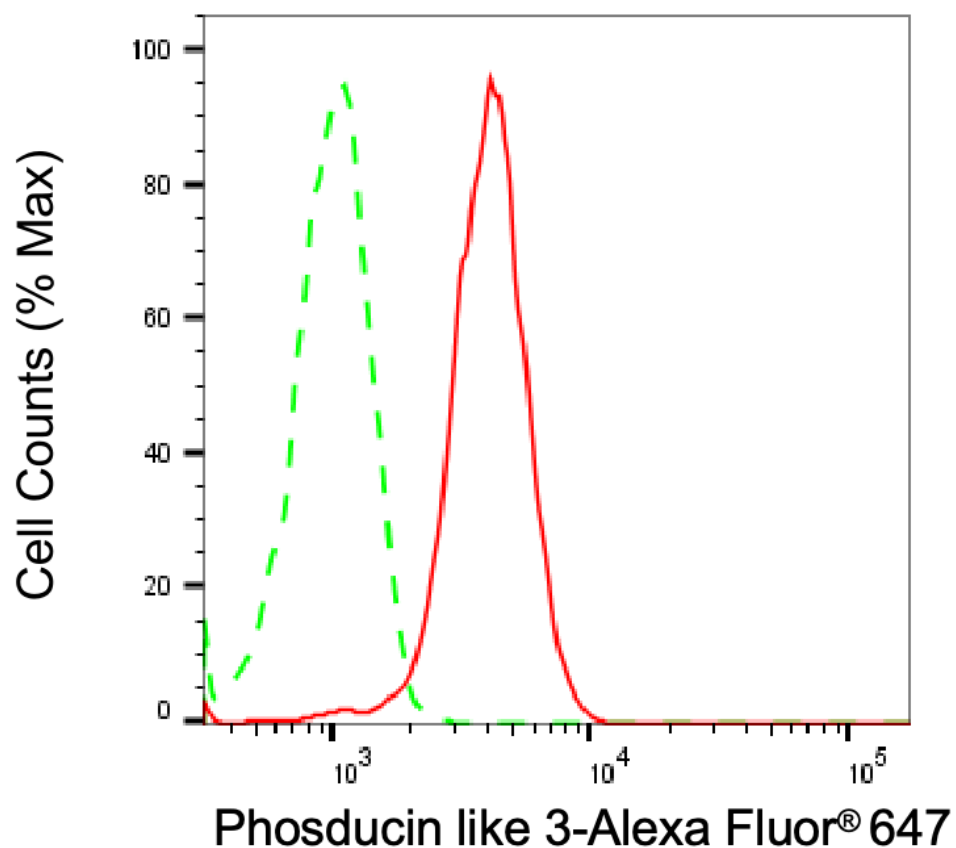
WWW.GENUINBIOTECH.COM



Western blotting analysis using anti-phosducin like 3 antibody (Cat#65059). Total cell lysates (30 μ g) from various cell lines were loaded and separated by SDS-PAGE. The blot was incubated with anti-phosducin like 3 antibody (Cat#65059, 1:2,500) and HRP-conjugated goat anti-mouse secondary antibody (Cat#101, 1:20,000) respectively. Image was developed using FeQ™ ECL Substrate Kit (Cat#226).



Western blotting analysis using anti-phosducin like 3 antibody (Cat#65059). Phosducin like 3 expression in wild-type (WT) and phosducin like 3 (PDCL3) knockdown (KD) 293T cells with 20 µg of total cell lysates. Hsp90 α serves as a loading control. The blot was incubated with anti-phosducin like 3 antibody (Cat#65059, 1:1,000) and HRP-conjugated goat anti-mouse secondary antibody (Cat#101, 1:20,000) respectively. Image was developed using NaQ™ ECL Substrate Kit (Cat#716).



Copyright ©2025 Genuin Biotechnologies LLC

Flow cytometric analysis of Phosducin like 3 expression in HeLa cells using anti-Phosducin like 3 antibody (Cat#65059, 1:1,000). Green, isotype control; red, Phosducin like 3.