

KD-Validated Anti-HNRNPH1 Mouse Monoclonal Antibody



Catalog #: 65063

Aliases

HNRNPH1; Heterogeneous Nuclear Ribonucleoprotein H1; Heterogeneous Nuclear Ribonucleoprotein H; HnRNPH; HNRPH1; Heterogeneous Nuclear Ribonucleoprotein H1 (H); HNRPH; Epididymis Secretory Sperm Binding Protein; HnRNP H; NEDCDS

Background

Gene Name: HNRNPH1

NCBI Gene Entry: [3187](#)

UniProt Entry: [P31943](#)

Application Information

Molecular Weight: Predicted, 49 kDa; observed, 49 kDa

Clonality: Mouse monoclonal antibody

Clone ID: 24GB14105

Species Reactivity: Human, mouse, rat

Applications Tested: Western blotting (WB), flow cytometry (FCM)

Immunogen

Recombinant protein of human HNRNPH1

Isotype

Mouse IgG1

Storage Buffer

Supplied in PBS (pH 7.4) containing 50% glycerol, and 0.02% sodium azide.

Storage

Store at -20 °C for one year.

Recommended Dilutions

Western Blotting (WB): 1:500-1:2,500

Flow Cytometry (FCM): 1:2,000

Note: This product is for research use only.

Validation Data

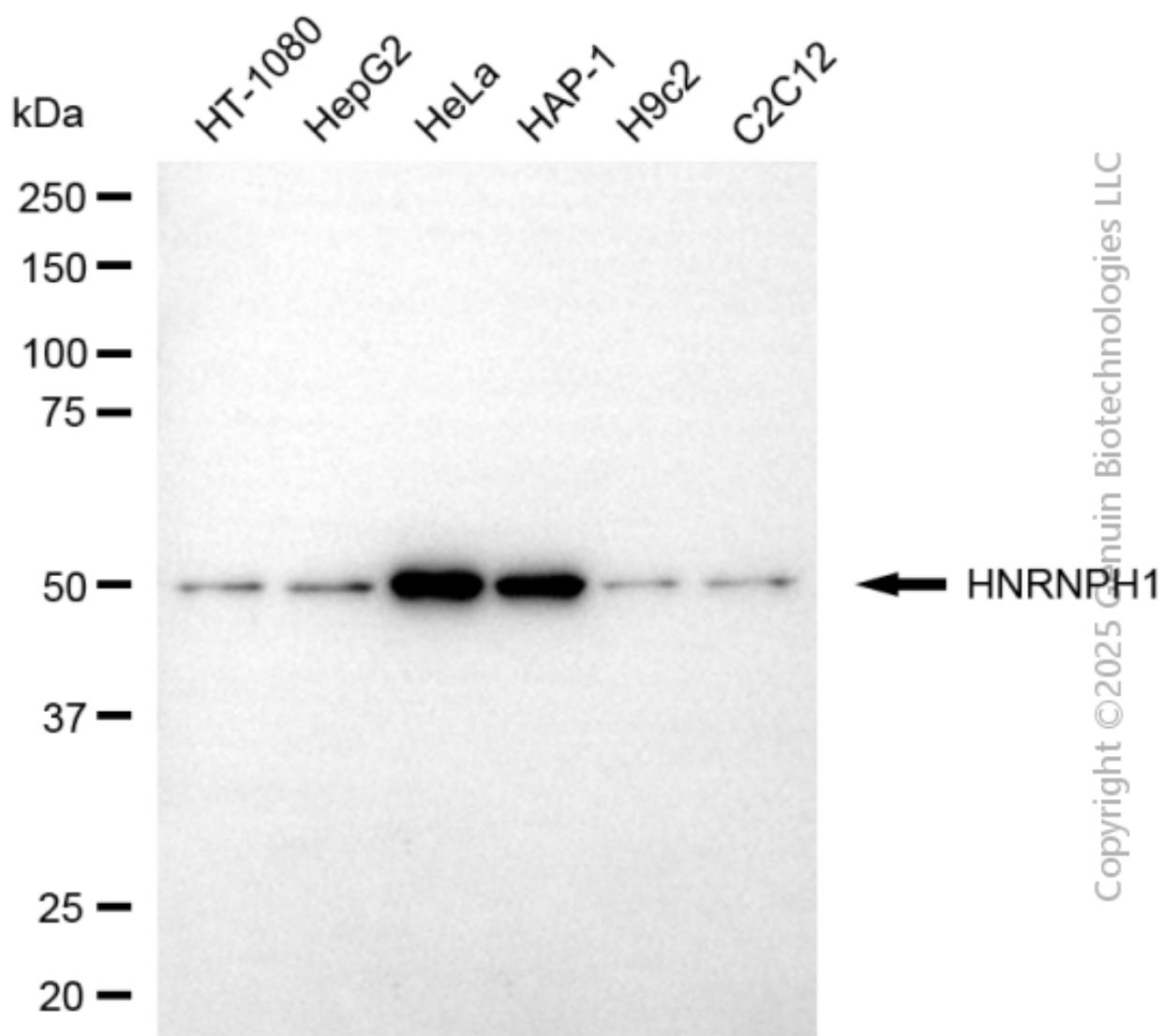
SUPPORT

SUPPORT@GENUINBIOTECH.COM
TEL: +1-540-855-7041

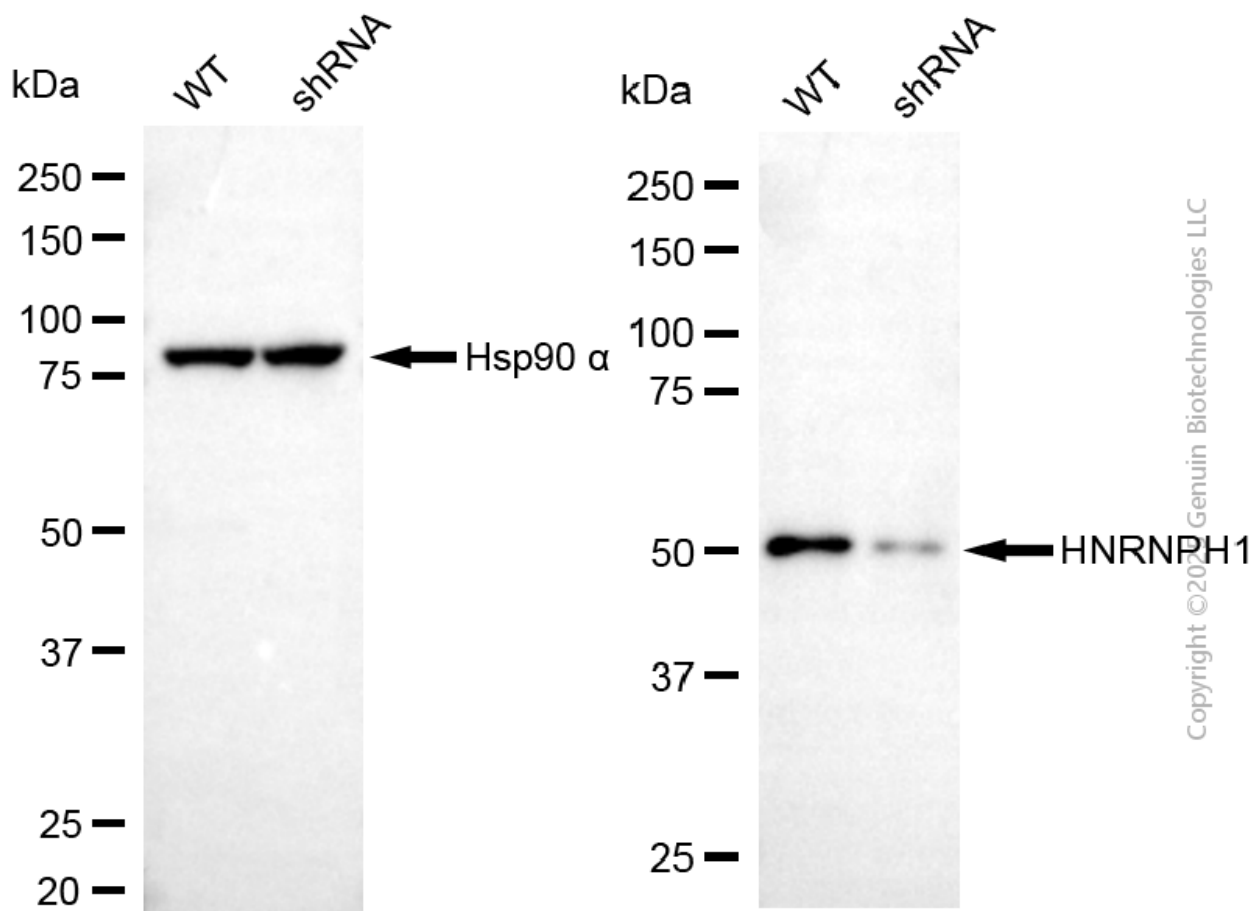
ORDERS

SALES@GENUINBIOTECH.COM
FAX: +1-540-855-7041

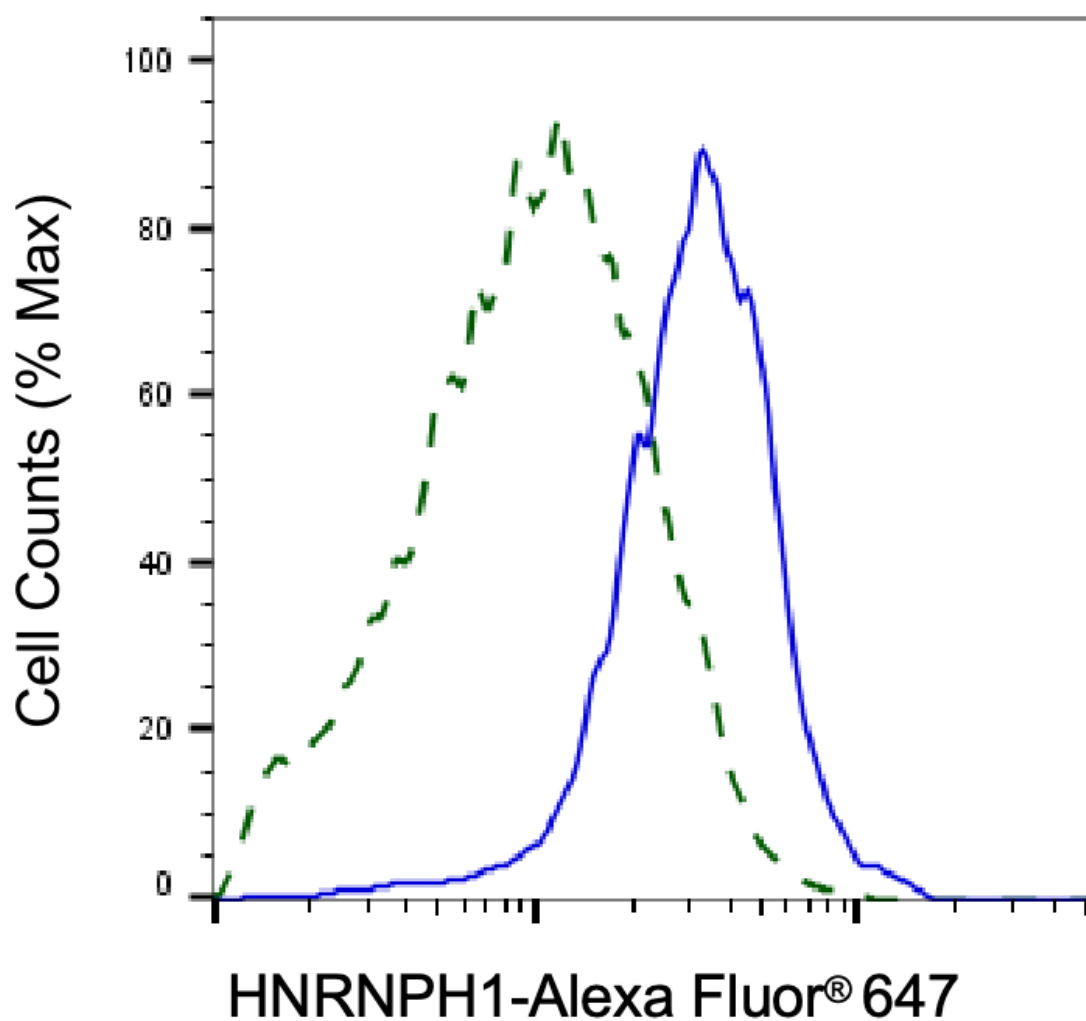
WWW.GENUINBIOTECH.COM



Western blotting analysis using anti-HNRNPH1 antibody (Cat#65063). Total cell lysates (30 μ g) from various cell lines were loaded and separated by SDS-PAGE. The blot was incubated with anti-HNRNPH1 antibody (Cat#65063, 1:2,500) and HRP-conjugated goat anti-mouse secondary antibody (Cat#101, 1:20,000) respectively. Image was developed using FeQ™ ECL Substrate Kit (Cat#226).



Western blotting analysis using anti-HNRNPH1 antibody (Cat#65063). HNRNPH1 expression in wild-type (WT) and HNRNPH1 shRNA knockdown (KD) HeLa cells with 30 µg of total cell lysates. Hsp90 α serves as a loading control. The blot was incubated with anti-HNRNPH1 antibody (Cat#65063, 1:2,500) and HRP-conjugated goat anti-mouse secondary antibody (Cat#101, 1:20,000) respectively. Image was developed using FeQ™ ECL Substrate Kit (Cat#226).



Copyright ©2025 Genuin Biotechnologies LLC

Validation of HNRNPH1 knockdown using flow cytometry. Wild-type(WT, Blue) and knockdown(KD, Green) HeLa cells were stained with anti-HNRNPH1 antibody (Cat#65063, 1:2,000) and analyzed using BD flow cytometer.