

KD-Validated Anti-ASRGL1 Mouse Monoclonal Antibody



Catalog #: 65088

Aliases

ASRGL1; Asparaginase And Isoaspartyl Peptidase 1; ALP; ALP1; Isoaspartyl Peptidase/L-Asparaginase; Asparaginase-Like 1 Protein; L-Asparagine Amidohydrolase; Asparaginase-Like Protein 1; Beta-Aspartyl-Peptidase; Isoaspartyl Dipeptidase; Asparaginase Like 1; EC 3.5.1.1; FLJ22316; CRASH; Testis Secretory Sperm-Binding Protein Li 242mP; L-Asparaginase; EC 3.4.19.5

Background

Gene Name: ASRGL1

NCBI Gene Entry: [80150](#)

UniProt Entry: [Q7L266](#)

Application Information

Molecular Weight: Predicted, 32 kDa; observed, 40 kDa

Clonality: Mouse monoclonal antibody

Clone ID: 24GB14255

Species Reactivity: Human

Applications Tested: Western blotting (WB), flow cytometry (FCM)

Immunogen

Recombinant protein of human ASRGL1

Isotype

Mouse IgG2a

Storage Buffer

Supplied in PBS (pH 7.4) containing 50% glycerol, and 0.02% sodium azide.

Storage

Store at -20 °C for one year.

Recommended Dilutions

Western Blotting (WB): 1:400-1:2,000

Flow Cytometry (FCM): 1:2,000

SUPPORT

SUPPORT@GENUINBIOTECH.COM
TEL: +1-540-855-7041

ORDERS

SALES@GENUINBIOTECH.COM
FAX: +1-540-855-7041

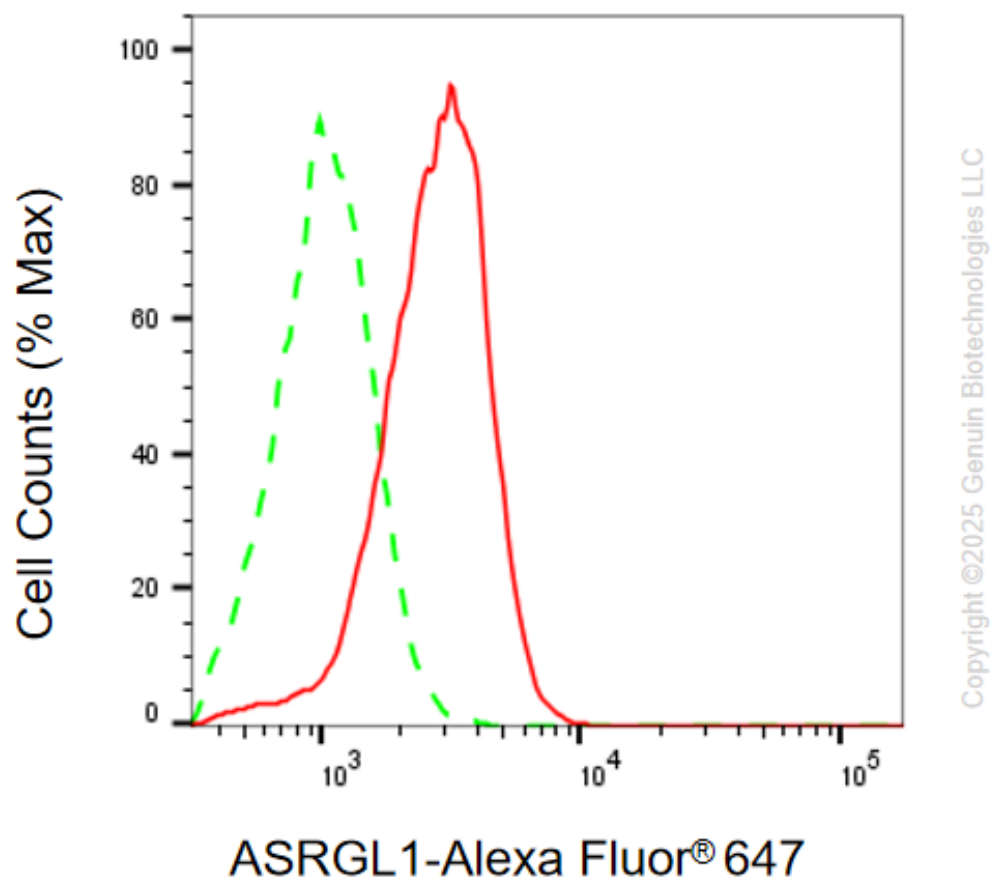
WWW.GENUINBIOTECH.COM

KD-Validated Anti-ASRGL1 Mouse Monoclonal Antibody

PAGE 2

Note: This product is for research use only.

Validation Data



Flow cytometric analysis of ASRGL1 expression in HeLa cells using anti-ASRGL1 antibody (Cat#65088, 1:2,000). Green, isotype control; red, ASRGL1.

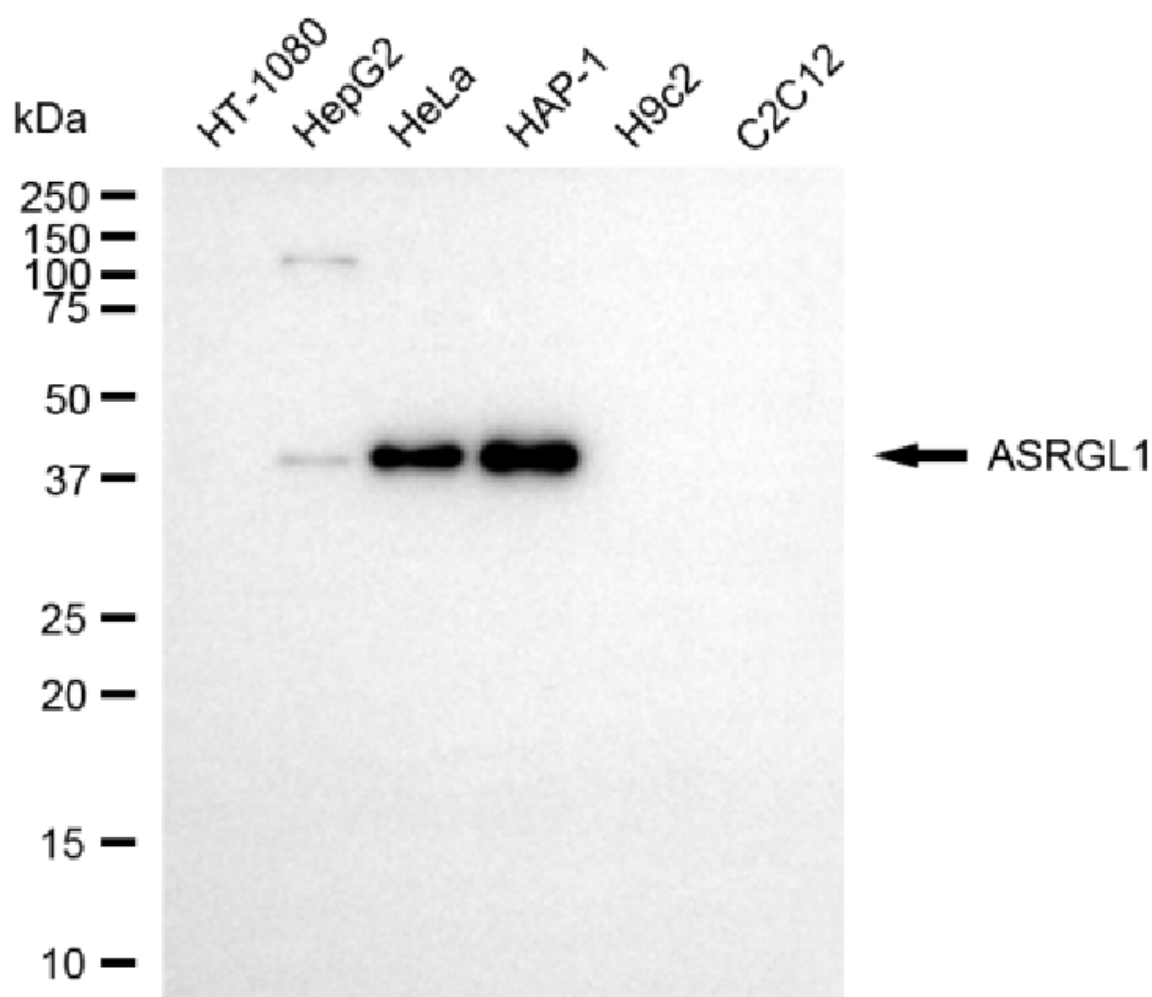
SUPPORT

SUPPORT@GENUINBIOTECH.COM
TEL: +1-540-855-7041

ORDERS

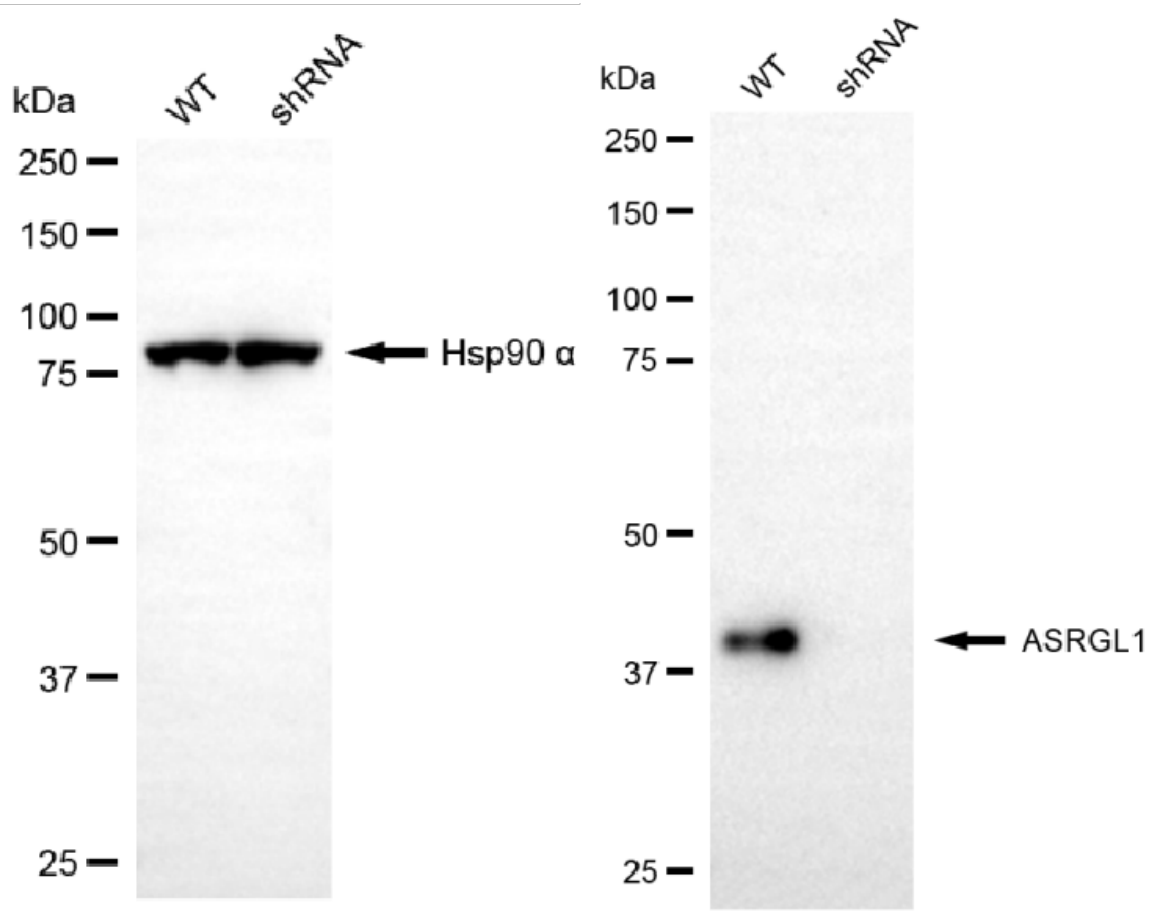
SALES@GENUINBIOTECH.COM
FAX: +1-540-855-7041

WWW.GENUINBIOTECH.COM



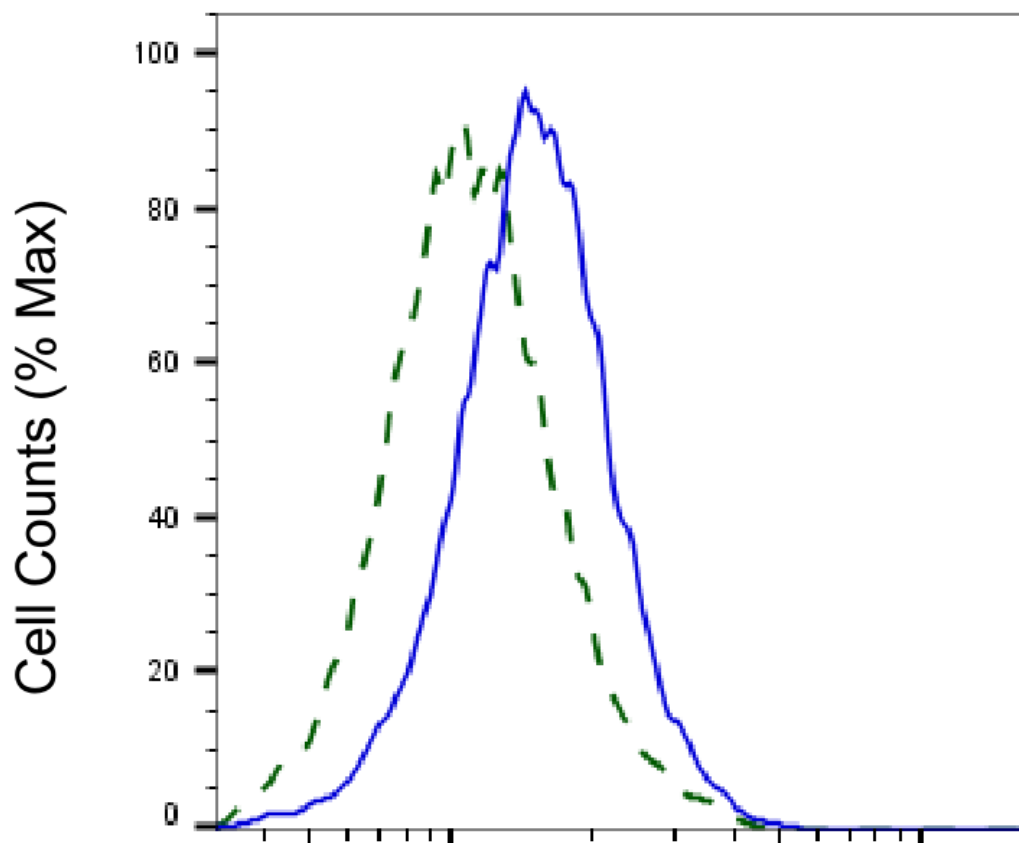
Copyright ©2025 Genuin Biotechnologies LLC

Western blotting analysis using anti-ASRGL1 antibody (Cat#65088). Total cell lysates (30 μ g) from various cell lines were loaded and separated by SDS-PAGE. The blot was incubated with anti-ASRGL1 antibody (Cat#65088, 1:2,000) and HRP-conjugated goat anti-mouse secondary antibody (Cat#101, 1:20,000) respectively. Image was developed using NaQ™ ECL Substrate Kit (Cat#716).



Copyright ©2025 Genuin Biotechnologies LLC

Western blotting analysis using anti-ASRGL1 antibody (Cat#65088). ASRGL1 expression in wild-type (WT) and ASRGL1 shRNA knockdown (KD) HeLa cells with 30 µg of total cell lysates. Hsp90 α serves as a loading control. The blot was incubated with anti-ASRGL1 antibody (Cat#65088, 1:2,000) and HRP-conjugated goat anti-mouse secondary antibody (Cat#101, 1:20,000) respectively. Image was developed using NaQ™ ECL Substrate Kit (Cat#716).



Copyright ©2025 Genuin Biotechnologies LLC

ASRGL1-Alexa Fluor® 647

Validation of ASRGL1 knockdown using flow cytometry. Wild-type(WT, Blue) and knockdown(KD, Green) HeLa cells were stained with anti-ASRGL1 antibody (Cat#65088, 1:2,000) and analyzed using BD flow cytometer.