

KD-Validated Anti-UBE2Z Mouse Monoclonal Antibody



Catalog #: 65096

Aliases

UBE2Z; Ubiquitin Conjugating Enzyme E2 Z; USE1; Uba6-Specific E2 Conjugating Enzyme 1; Ubiquitin-Conjugating Enzyme E2 Z; E2 Ubiquitin-Conjugating Enzyme Z; Ubiquitin Carrier Protein Z; Ubiquitin-Protein Ligase Z; UBA6-Specific Enzyme E2; FLJ13855; Ubiquitin-Conjugating Enzyme E2Z; Ubiquitin Conjugating Enzyme E2Z; EC 2.3.2.23; EC 6.3.2.19; HOYS7; Use1

Background

Gene Name: UBE2Z

NCBI Gene Entry: [65264](#)

UniProt Entry: [Q9H832](#)

Application Information

Molecular Weight: Predicted, 38 kDa; observed, 38 kDa

Clonality: Mouse monoclonal antibody

Clone ID: 24GB14295

Species Reactivity: Human, mouse, rat

Applications Tested: Western blotting (WB), flow cytometry (FCM), immunocytochemistry (IC)

Immunogen

Recombinant protein of human UBE2Z

Isotype

Mouse IgG2a

Storage Buffer

Supplied in PBS (pH 7.4) containing 50% glycerol, and 0.02% sodium azide.

Storage

Store at -20 °C for one year.

Recommended Dilutions

Western Blotting (WB): 1:400-1:2,000

Flow Cytometry (FCM): 1:2,000

Immunocytochemistry (IC): 1:100-1:1,000

SUPPORT

SUPPORT@GENUINBIOTECH.COM
TEL: +1-540-855-7041

ORDERS

SALES@GENUINBIOTECH.COM
FAX: +1-540-855-7041

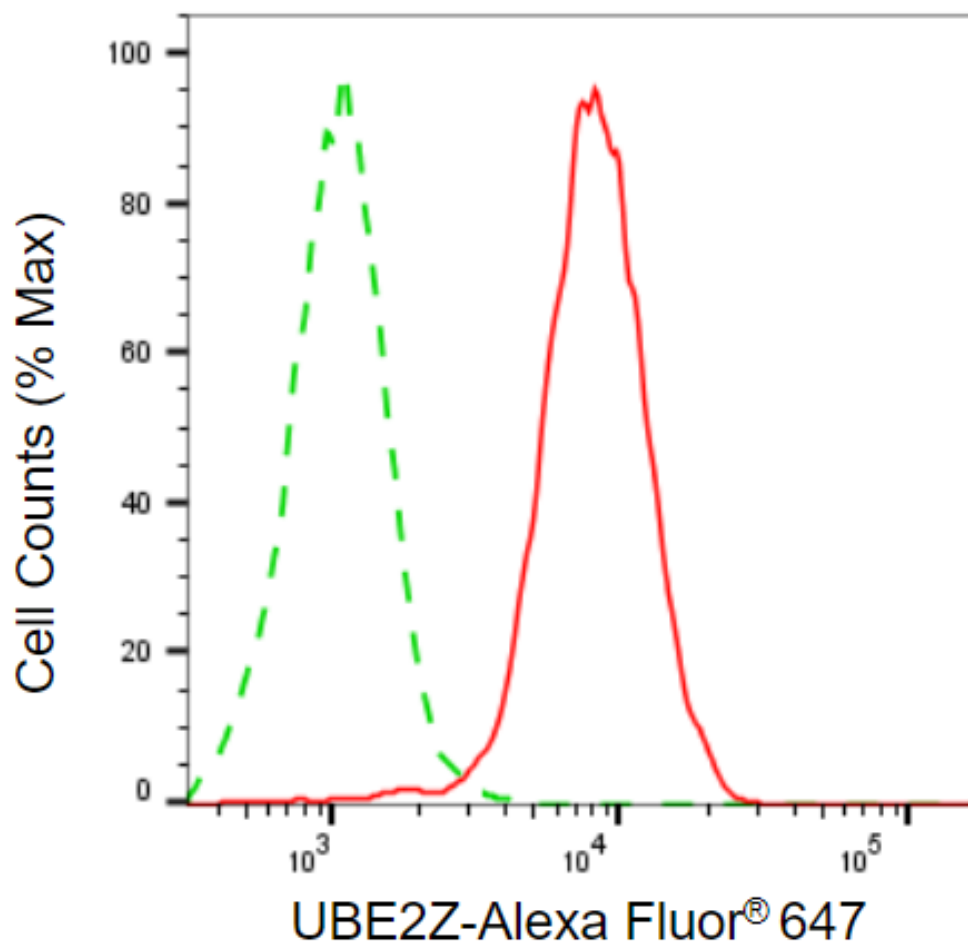
WWW.GENUINBIOTECH.COM

KD-Validated Anti-UBE2Z Mouse Monoclonal Antibody

PAGE 2

Note: This product is for research use only.

Validation Data



Copyright ©2025 Genuin Biotechnologies LLC

Flow cytometric analysis of UBE2Z expression in HepG2 cells using anti-UBE2Z antibody (Cat#65096, 1:2,000). Green, isotype control; red, UBE2Z.

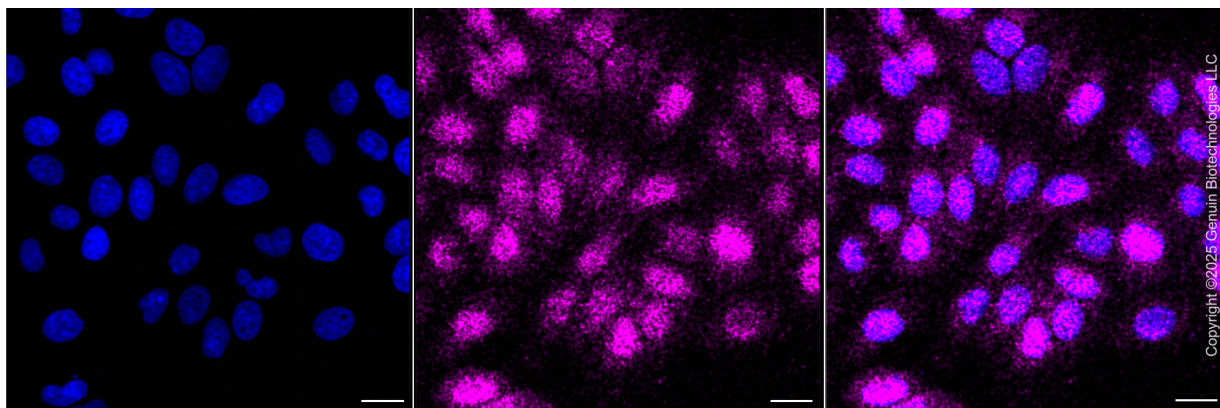
SUPPORT

SUPPORT@GENUINBIOTECH.COM
TEL: +1-540-855-7041

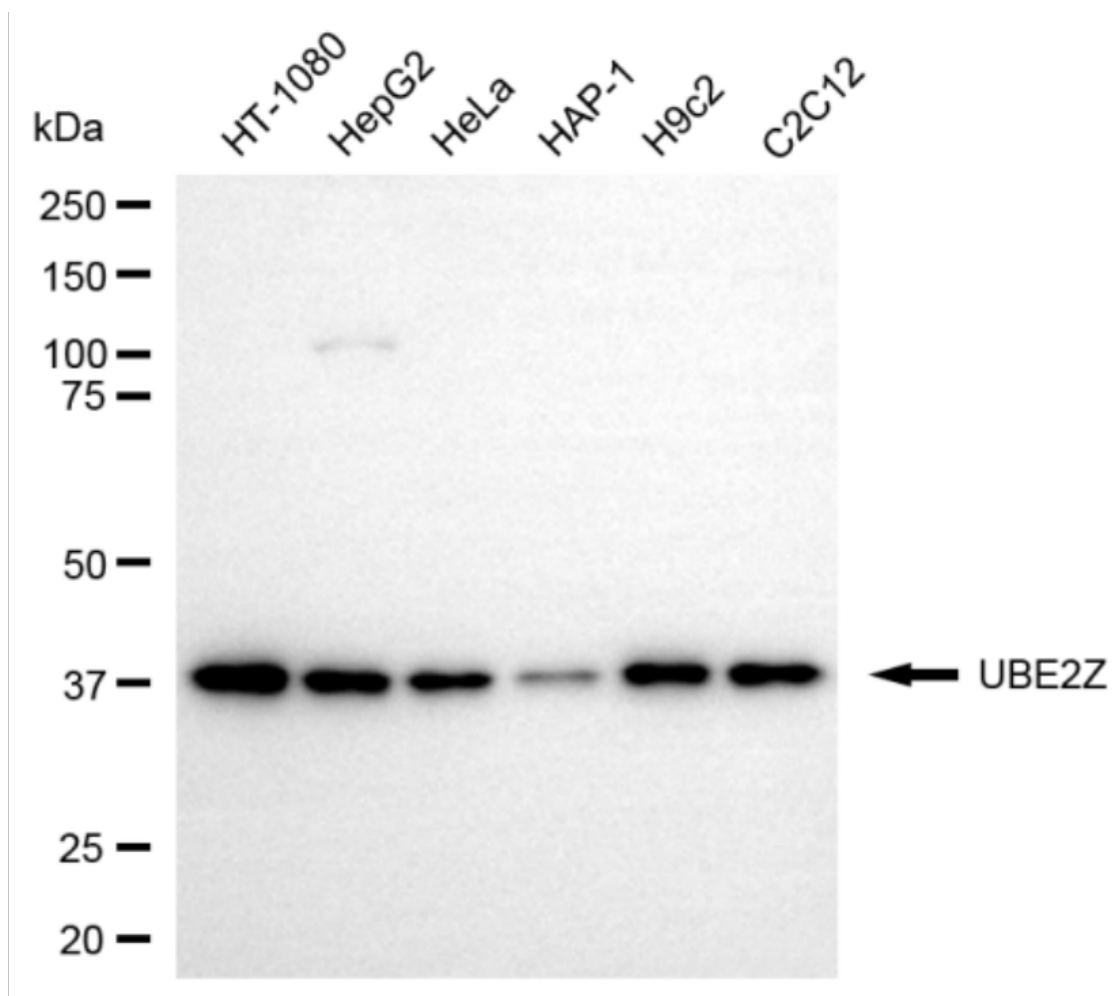
ORDERS

SALES@GENUINBIOTECH.COM
FAX: +1-540-855-7041

WWW.GENUINBIOTECH.COM



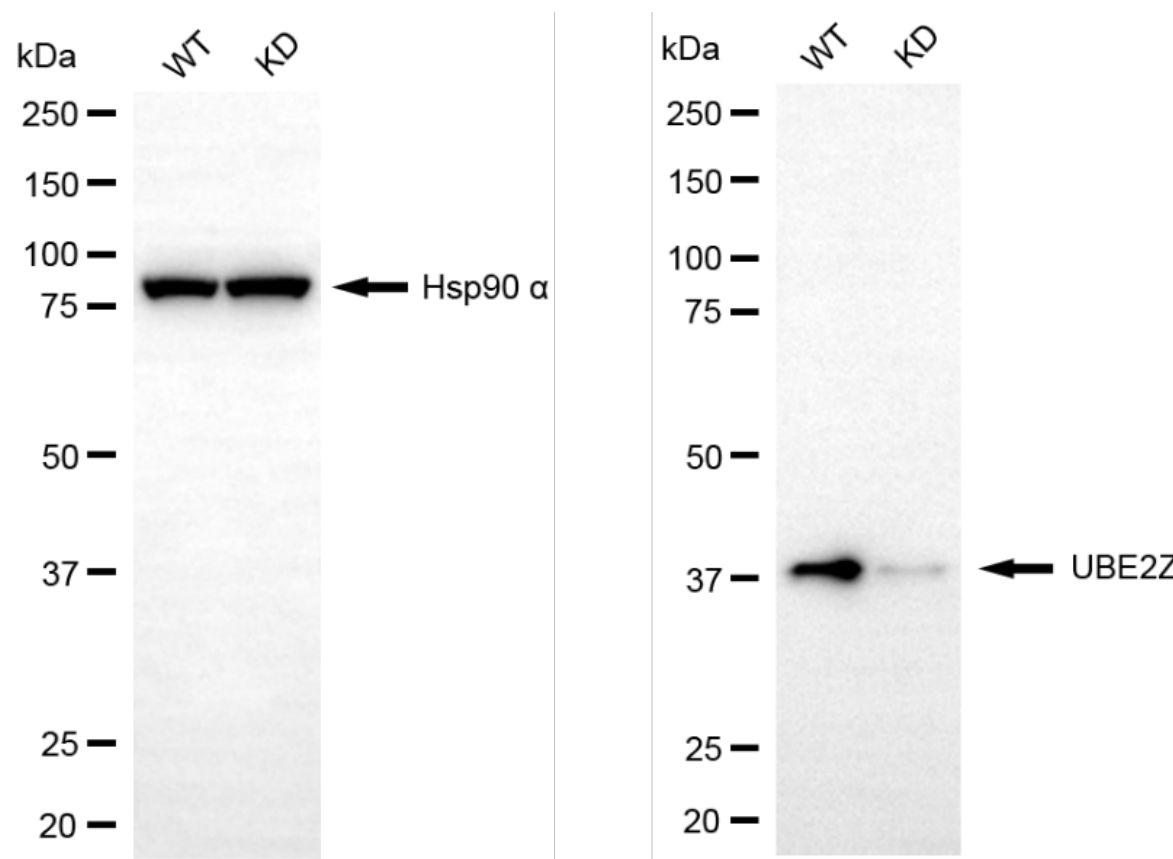
Immunocytochemical staining of HepG2 cells with anti-UBE2Z antibody (Cat#65096, 1:1,000) . Nuclei were stained blue with DAPI; UBE2Z was stained magenta with Alexa Fluor® 647. Images were taken using Leica stellaris 5. Protein abundance based on laser Intensity and smart gain: Low. Scale bar, 20 μ m.



Copyright ©2025 Genuin Biotechnologies LLC

Western blotting analysis using anti-UBE2Z antibody (Cat#65096). Total cell lysates (30 µg) from various cell lines were loaded and separated by SDS-PAGE. The blot was incubated with anti-UBE2Z antibody (Cat#65096, 1:2,000) and HRP-conjugated goat anti-mouse secondary antibody (Cat#101, 1:20,000) respectively. Image was developed using FeQ™ ECL Substrate Kit (Cat#226).

Western blotting analysis using anti-UBE2Z antibody (Cat#65096). Total cell lysates (30 µg) from various cell lines were loaded and separated by SDS-PAGE. The blot was incubated with anti-UBE2Z antibody (Cat#65096, 1:2,000) and HRP-conjugated goat anti-mouse secondary antibody (Cat#101, 1:20,000) respectively. Image was developed using FeQ™ ECL Substrate Kit (Cat#226).



Copyright ©2025 Genuin Biotechnologies LLC

Western blotting analysis using anti-UBE2Z antibody (Cat#65096). UBE2Z expression in wild-type (WT) and UBE2Z knockdown (KD) HeLa cells with 20 μ g of total cell lysates. Hsp90 α serves as a loading control. The blot was incubated with anti-UBE2Z antibody (Cat#65096, 1:2,000) and HRP-conjugated goat anti-mouse secondary antibody (Cat#101, 1:20,000) respectively. Image was developed using FeQ™ ECL Substrate Kit (Cat#226).