

KD-Validated Anti-IMMT Mouse Monoclonal Antibody



Catalog #: 65108

Aliases

IMMT; Inner Membrane Mitochondrial Protein; MINOS2; HMP; Mitofilin; MICOS60; Mic60; P87; P89; Mitochondrial Contact Site And Cristae Organizing System Subunit 60; Mitochondrial Inner Membrane Organizing System 2; Cell Proliferation-Inducing Gene 4/52 Protein; Mitochondrial Inner Membrane Protein; MICOS Complex Subunit MIC60; Heart Muscle Protein; P87/89; Inner Membrane Protein, Mitochondrial (Mitofilin); Cell Proliferation-Inducing Protein 52; Proliferation-Inducing Gene 4; Motor Protein; PIG52; MIC60; PIG4

Background

Gene Name: IMMT

NCBI Gene Entry: [10989](#)

UniProt Entry: [Q16891](#)

Application Information

Molecular Weight: Predicted, 84 kDa; observed, 75 kDa

Clonality: Mouse monoclonal antibody

Clone ID: 24GB14355

Species Reactivity: Human

Applications Tested: Western blotting (WB), flow cytometry (FCM), immunocytochemistry (IC)

Immunogen

Recombinant protein of human IMMT

Isotype

Mouse IgG1

Storage Buffer

Supplied in PBS (pH 7.4) containing 50% glycerol, and 0.02% sodium azide.

Storage

Store at -20 °C for one year.

Recommended Dilutions

Western Blotting (WB): 1:400-1:2,000

Flow Cytometry (FCM): 1:1,000

Immunocytochemistry (IC): 1:100-1:1,000

SUPPORT

SUPPORT@GENUINBIOTECH.COM
TEL: +1-540-855-7041

ORDERS

SALES@GENUINBIOTECH.COM
FAX: +1-540-855-7041

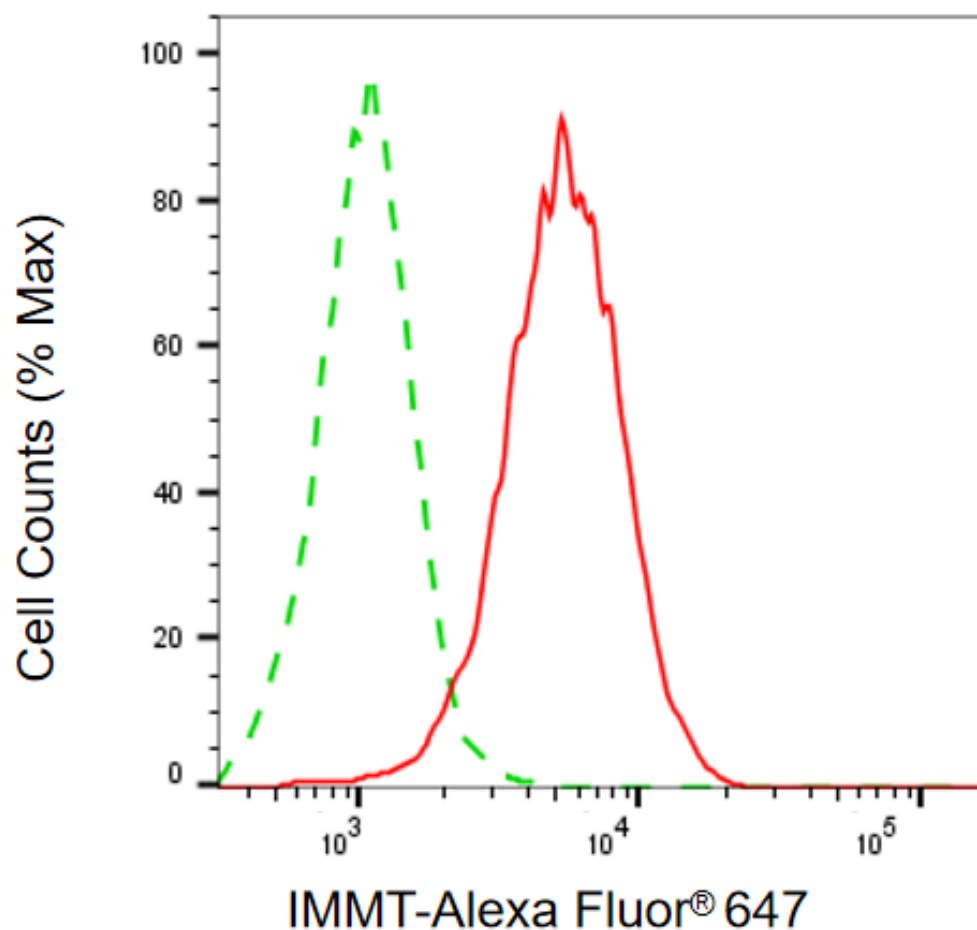
WWW.GENUINBIOTECH.COM

KD-Validated Anti-IMMT Mouse Monoclonal Antibody

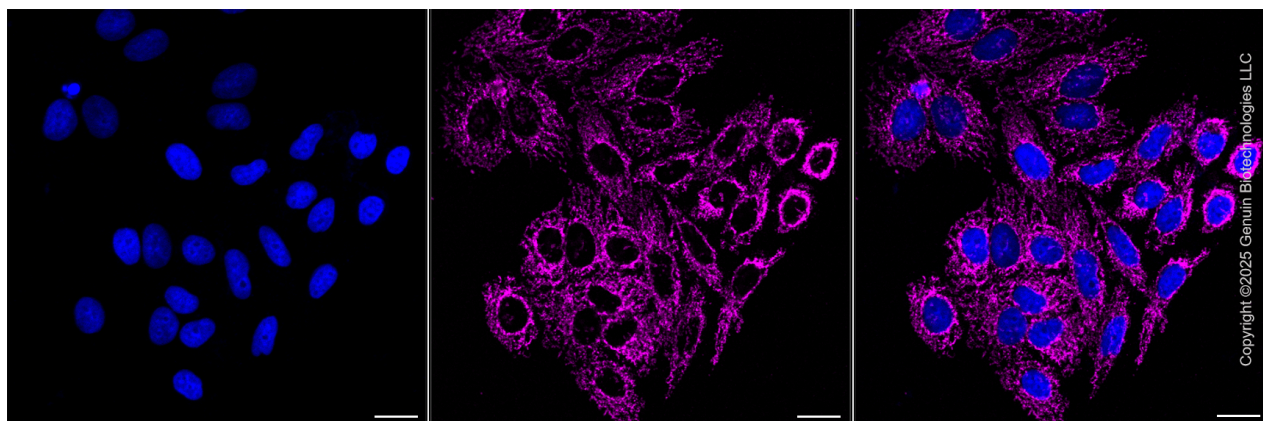
PAGE 2

Note: This product is for research use only.

Validation Data



Flow cytometric analysis of IMMT expression in HepG2 cells using anti-IMMT antibody (Cat#65108, 1:1,000) . Green, isotype control; red, IMMT.



SUPPORT

SUPPORT@GENUINBIOTECH.COM
TEL: +1-540-855-7041

ORDERS

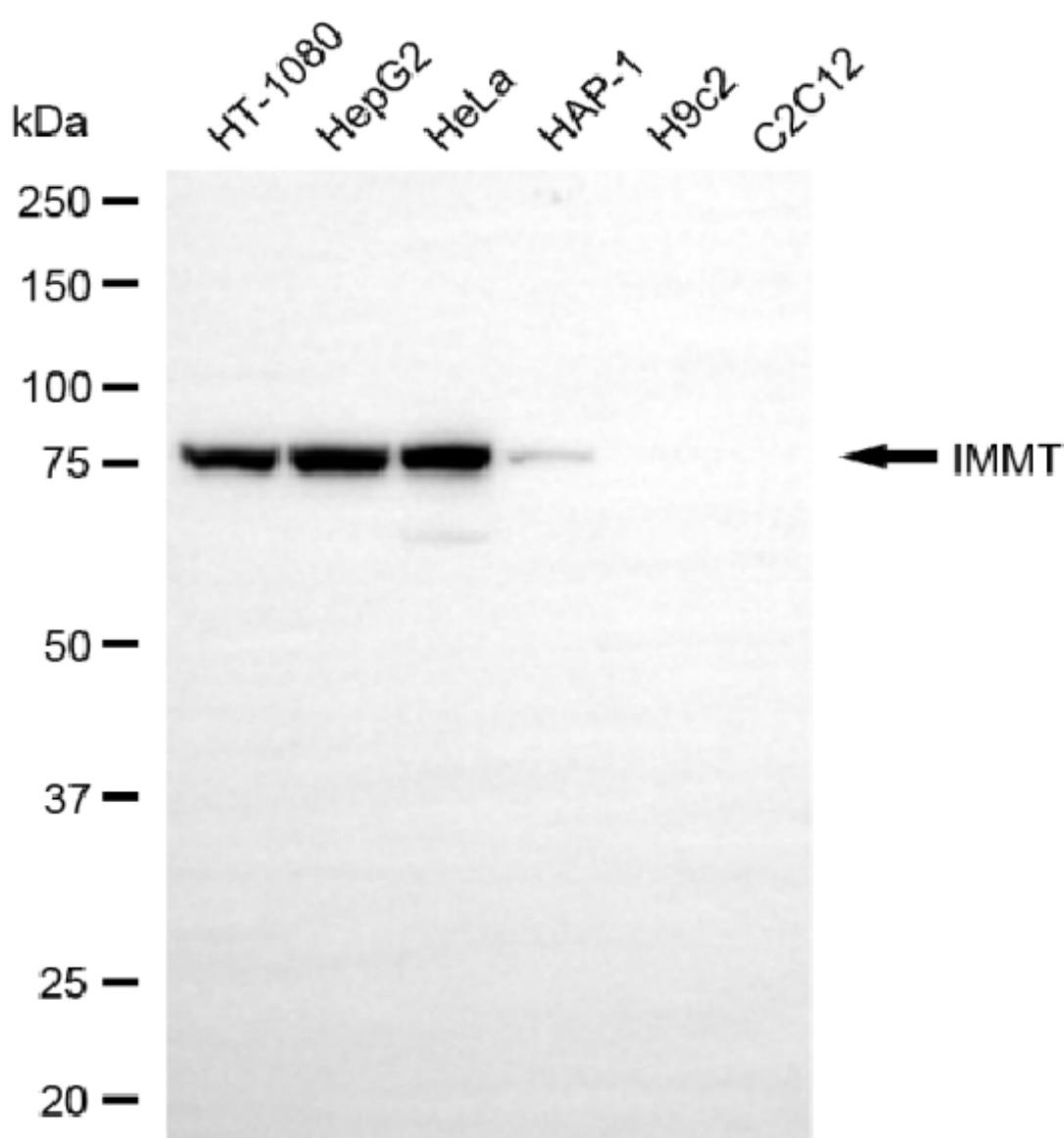
SALES@GENUINBIOTECH.COM
FAX: +1-540-855-7041

WWW.GENUINBIOTECH.COM

KD-Validated Anti-IMMT Mouse Monoclonal Antibody

PAGE 3

Immunocytochemical staining of HepG2 cells with anti-IMMT antibody (Cat#65108, 1:1,000) . Nuclei were stained blue with DAPI; IMMT was stained magenta with Alexa Fluor® 647. Images were taken using Leica stellaris 5. Protein abundance based on laser Intensity and smart gain: High. Scale bar, 20 μ m.



Copyright ©2025 Genuin Biotechnologies LLC

Western blotting analysis using anti-IMMT antibody (Cat#65108). Total cell lysates (30 μ g) from various cell lines were loaded and separated by SDS-PAGE. The blot was incubated with anti-IMMT antibody (Cat#65108, 1:2,000) and HRP-conjugated goat anti-mouse secondary antibody (Cat#101, 1:20,000) respectively. Image was developed using NaQ™ ECL Substrate Kit (Cat#716).

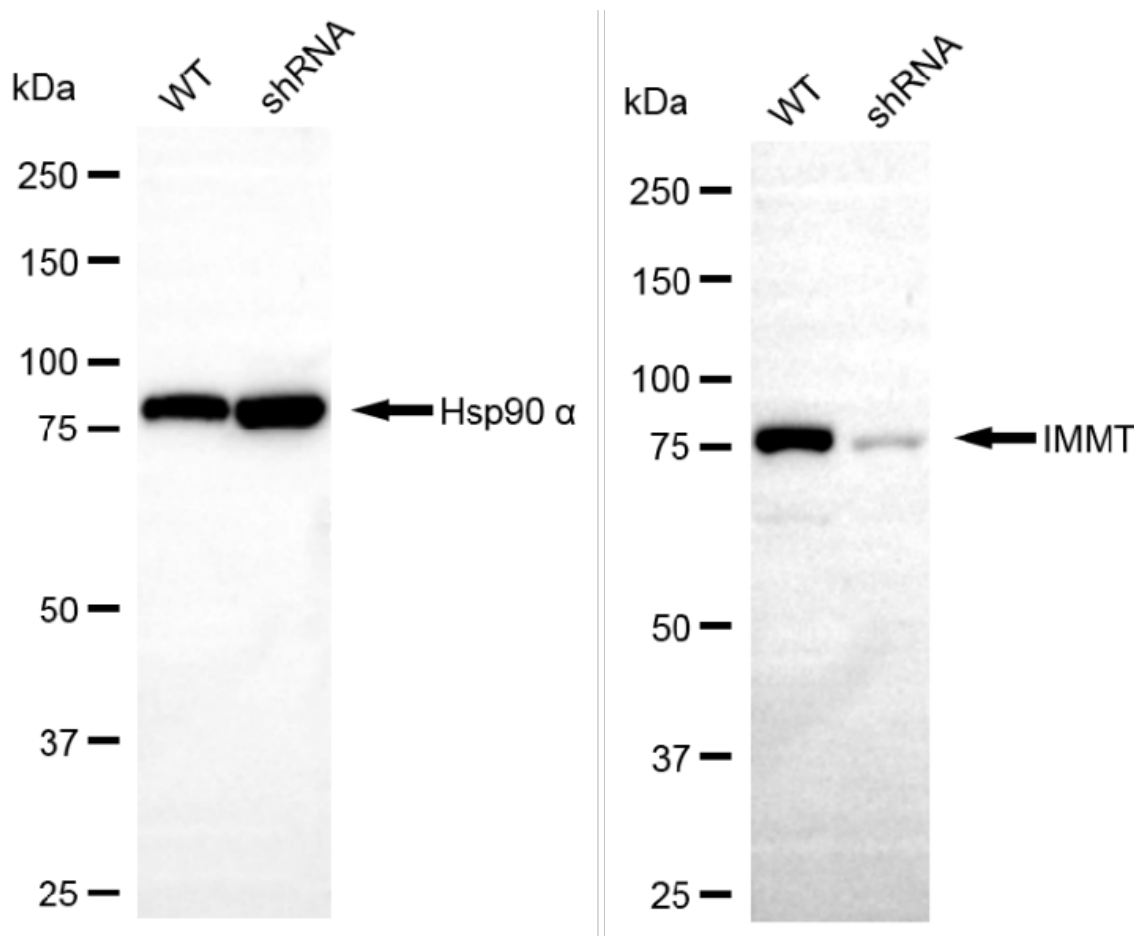
SUPPORT

SUPPORT@GENUINBIOTECH.COM
TEL: +1-540-855-7041

ORDERS

SALES@GENUINBIOTECH.COM
FAX: +1-540-855-7041

WWW.GENUINBIOTECH.COM



Copyright ©2025 Genuin Biotechnologies LLC

Western blotting analysis using anti-IMMT antibody (Cat#65108). IMMT expression in wild-type (WT) and IMMT shRNA knockdown (KD) HeLa cells with 20 µg of total cell lysates. Hsp90 α serves as a loading control. The blot was incubated with anti-IMMT antibody (Cat#65108, 1:2,000) and HRP-conjugated goat anti-mouse secondary antibody (Cat#101, 1:20,000) respectively. Image was developed using NaQ™ ECL Substrate Kit (Cat#716).

SUPPORT

SUPPORT@GENUINBIOTECH.COM
TEL: +1-540-855-7041

ORDERS

SALES@GENUINBIOTECH.COM
FAX: +1-540-855-7041

WWW.GENUINBIOTECH.COM