

# KD-Validated Anti-RNF31 Mouse Oligoclonal Antibody



**Catalog #: 65166**

## Aliases

RNF31; Ring Finger Protein 31; ZIBRA; HOIP; HOIL-1-Interacting Protein; Paul; Zinc In-Between-RING-Finger Ubiquitin-Associated Domain Protein; RING-Type E3 Ubiquitin Transferase RNF31; E3 Ubiquitin-Protein Ligase RNF31; FLJ1011; FLJ23501; RING Finger Protein 31; EC 2.3.2.31; IMD115

## Background

Gene Name: RNF31

NCBI Gene Entry: [55072](#)

UniProt Entry: [Q96EP0](#)

## Application Information

Molecular Weight: Predicted, 120 kDa; observed, 120 kDa

Clonality: Mouse oligoclonal antibody

Species Reactivity: Human, mouse, rat

Applications Tested: Western blotting (WB), flow cytometry (FCM), immunocytochemistry (IC)

## Immunogen

Recombinant protein of human RNF31

## Isotype

Mouse IgG

## Storage Buffer

Supplied in PBS (pH 7.4) containing 50% glycerol, and 0.02% sodium azide.

## Storage

Store at -20 °C for one year.

## Recommended Dilutions

Western Blotting (WB): 1:500-1:2,500

Flow Cytometry (FCM): 1:2,000

Immunocytochemistry (IC): 1:100-1:1,000

**Note:** This product is for research use only.

---

### SUPPORT

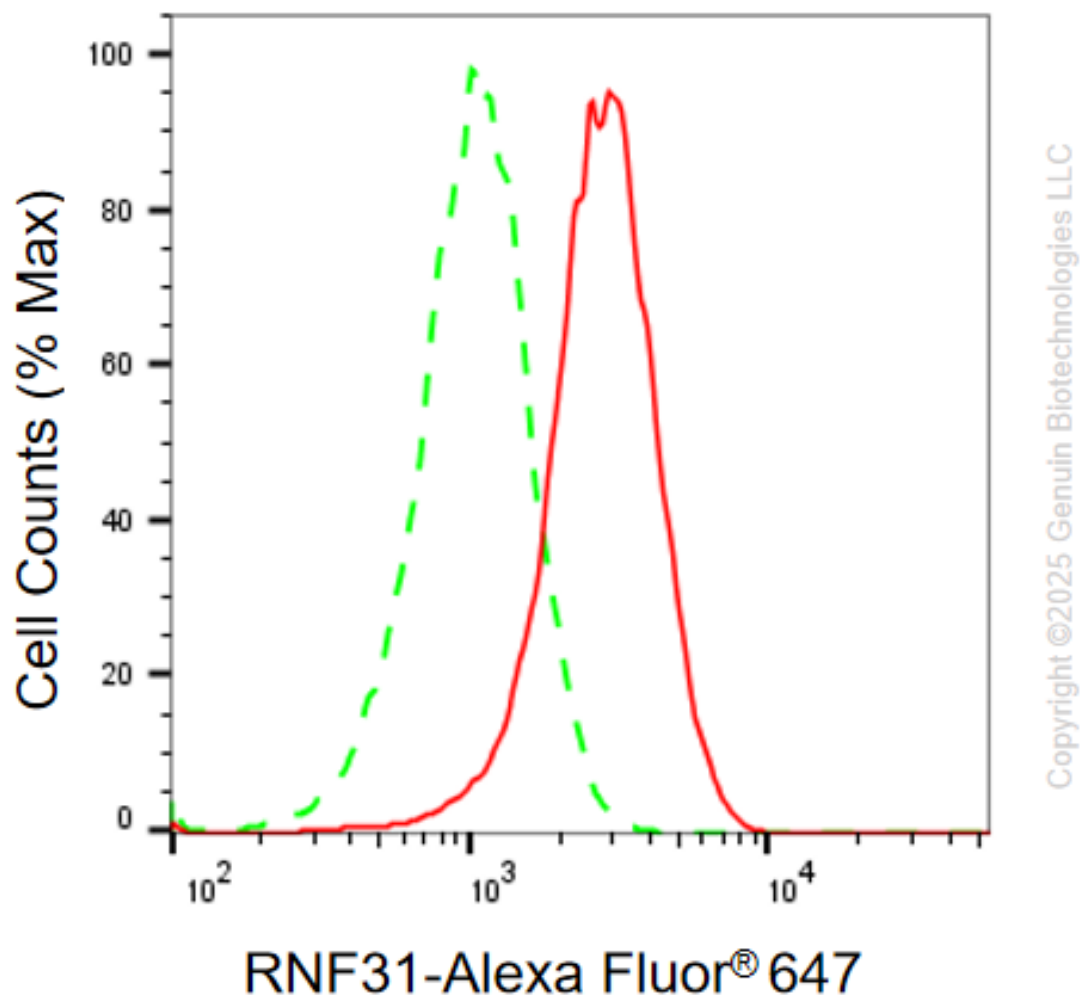
SUPPORT@GENUINBIOTECH.COM  
TEL: +1-540-855-7041

### ORDERS

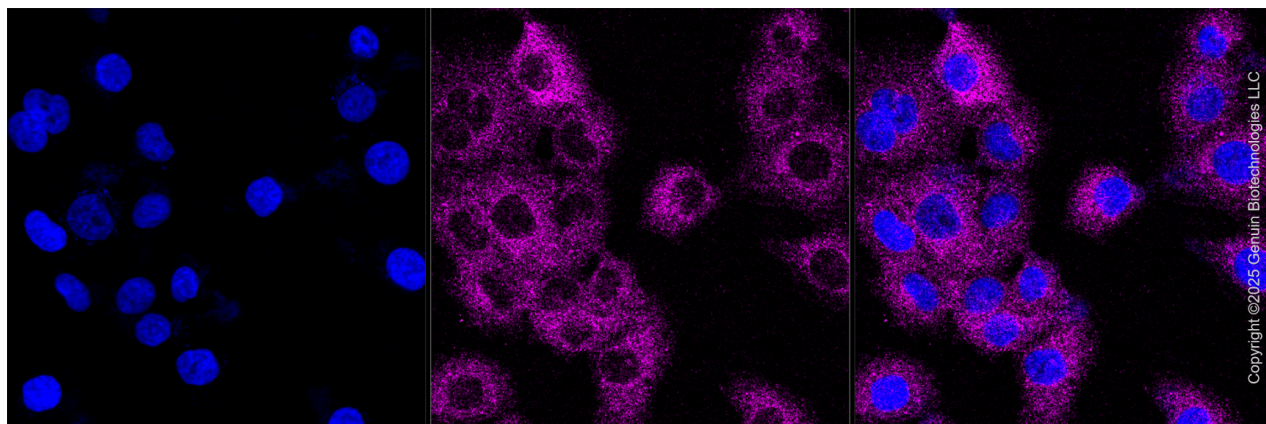
SALES@GENUINBIOTECH.COM  
FAX: +1-540-855-7041

[WWW.GENUINBIOTECH.COM](http://WWW.GENUINBIOTECH.COM)

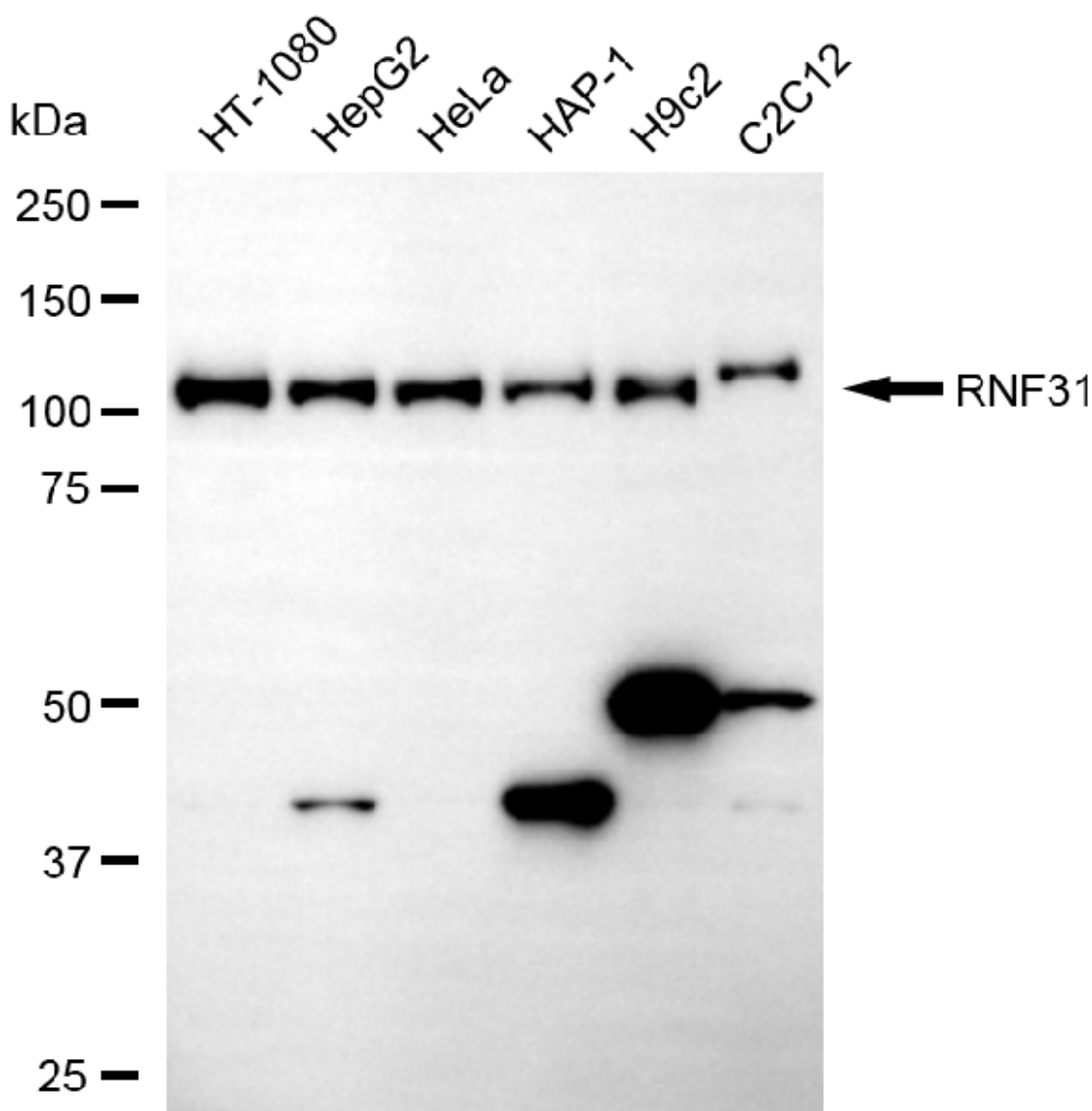
**Validation Data**



Flow cytometric analysis of RNF31 expression in HT-1080 cells using anti-RNF31 antibody (Cat#65166, 1:2,000). Green, isotype control; red, RNF31.

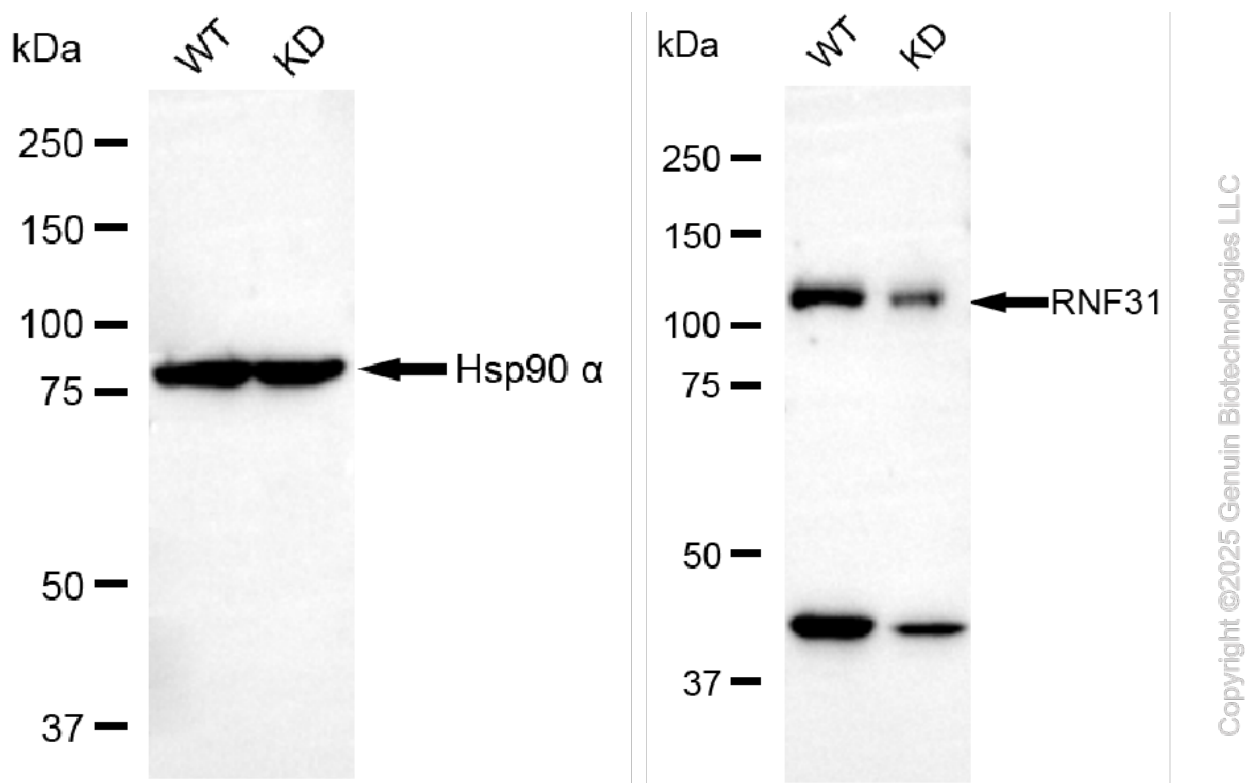


Immunocytochemical staining of HT-1080 cells with anti-RNF31 antibody (Cat#65166, 1:1,000). Nuclei were stained blue with DAPI; RNF31 was stained magenta with Alexa Fluor® 647. Images were taken using Leica stellaris 5. Protein abundance based on laser Intensity and smart gain: Low. Scale bar, 20  $\mu$ m.



Copyright ©2025 Genuin Biotechnologies LLC

Western blotting analysis using anti-RNF31 antibody (Cat#65166). Total cell lysates (30 µg) from various cell lines were loaded and separated by SDS-PAGE. The blot was incubated with anti-RNF31 antibody (Cat#65166, 1:2,500) and HRP-conjugated goat anti-mouse secondary antibody (Cat#101, 1:20,000) respectively. Image was developed using FeQ™ ECL Substrate Kit (Cat#226).



Western blotting analysis using anti-RNF31 antibody (Cat#65166). RNF31 expression in wild-type (WT) and RNF31 knockdown (KD) HT-1080 cells with 20 µg of total cell lysates. Hsp90 α serves as a loading control. The blot was incubated with anti-RNF31 antibody (Cat#65166, 1:2,500) and HRP-conjugated goat anti-mouse secondary antibody (Cat#201, 1:20,000) respectively. Image was developed using FeQ™ ECL Substrate Kit (Cat#226).