

KD-Validated Anti-Legumain Recombinant Rabbit Monoclonal Antibody



Catalog #: 65172

Aliases

LGMN; Legumain; LGMN1; PRSC1; Protease, Cysteine, 1 (Legumain) ; Asparaginyl Endopeptidase; Protease, Cysteine 1; EC 3.4.22.34; Cysteine Protease 1; AEP

Background

Gene Name: LGMN

NCBI Gene Entry: [5641](#)

UniProt Entry: [Q99538](#)

Application Information

Molecular Weight: Predicted, 49 kDa, observed, 36,57 kDa

Clonality: Rabbit monoclonal antibody

Clone ID: 23GB2095

Species Reactivity: Human, rat

Applications Tested: Western blotting (WB), flow cytometry (FCM), immunocytochemistry (IC)

Immunogen

A synthesized peptide derived from human Legumain

Isotype

Rabbit IgG

Storage Buffer

Supplied in PBS (pH 7.4) containing 50% glycerol, and 0.02% sodium azide.

Storage

Store at -20 °C for one year.

Recommended Dilutions

Western Blotting (WB): 1:1,000-1:5,000

Flow Cytometry (FCM): 1:2,000

Immunocytochemistry (IC): 1:100-1:1,000

Note: This product is for research use only.

Validation Data

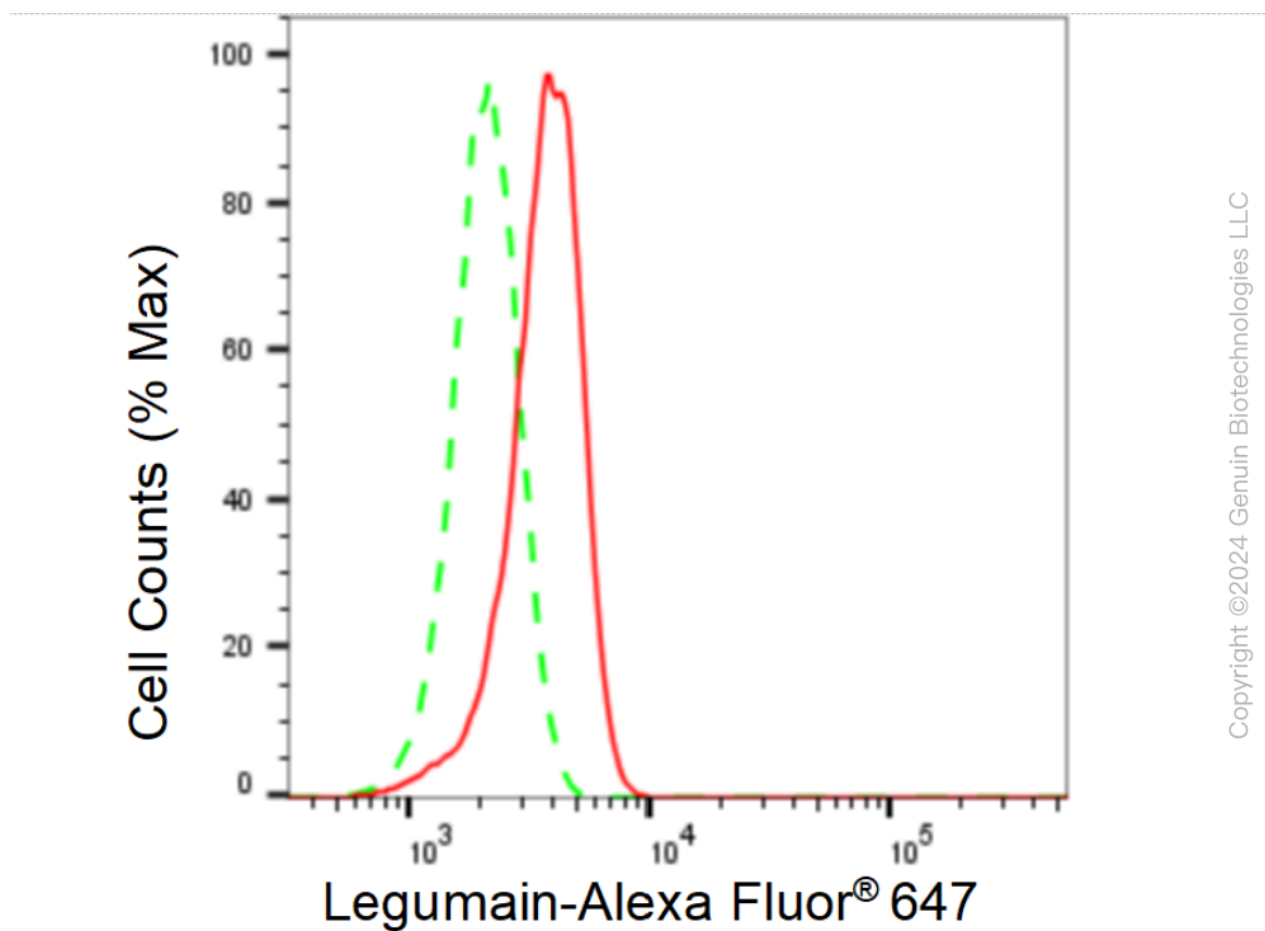
SUPPORT

SUPPORT@GENUINBIOTECH.COM
TEL: +1-540-855-7041

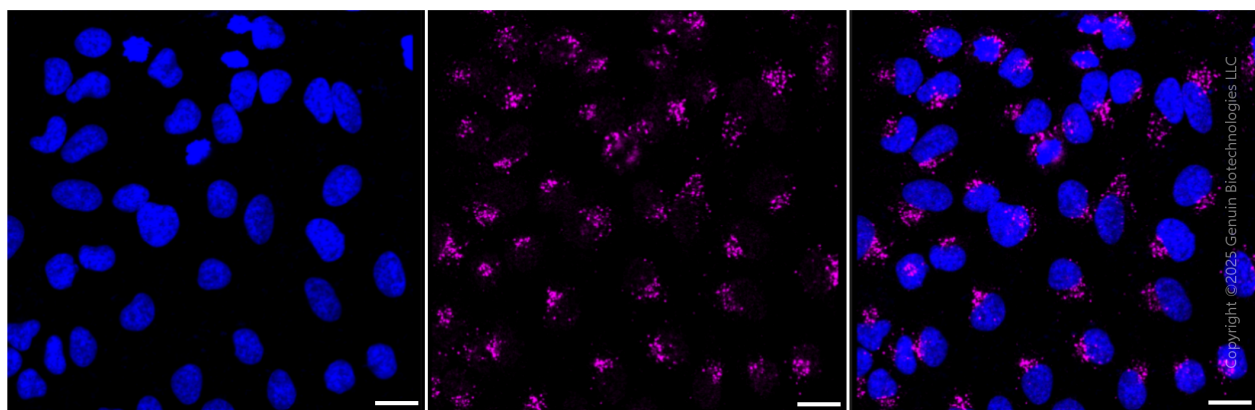
ORDERS

SALES@GENUINBIOTECH.COM
FAX: +1-540-855-7041

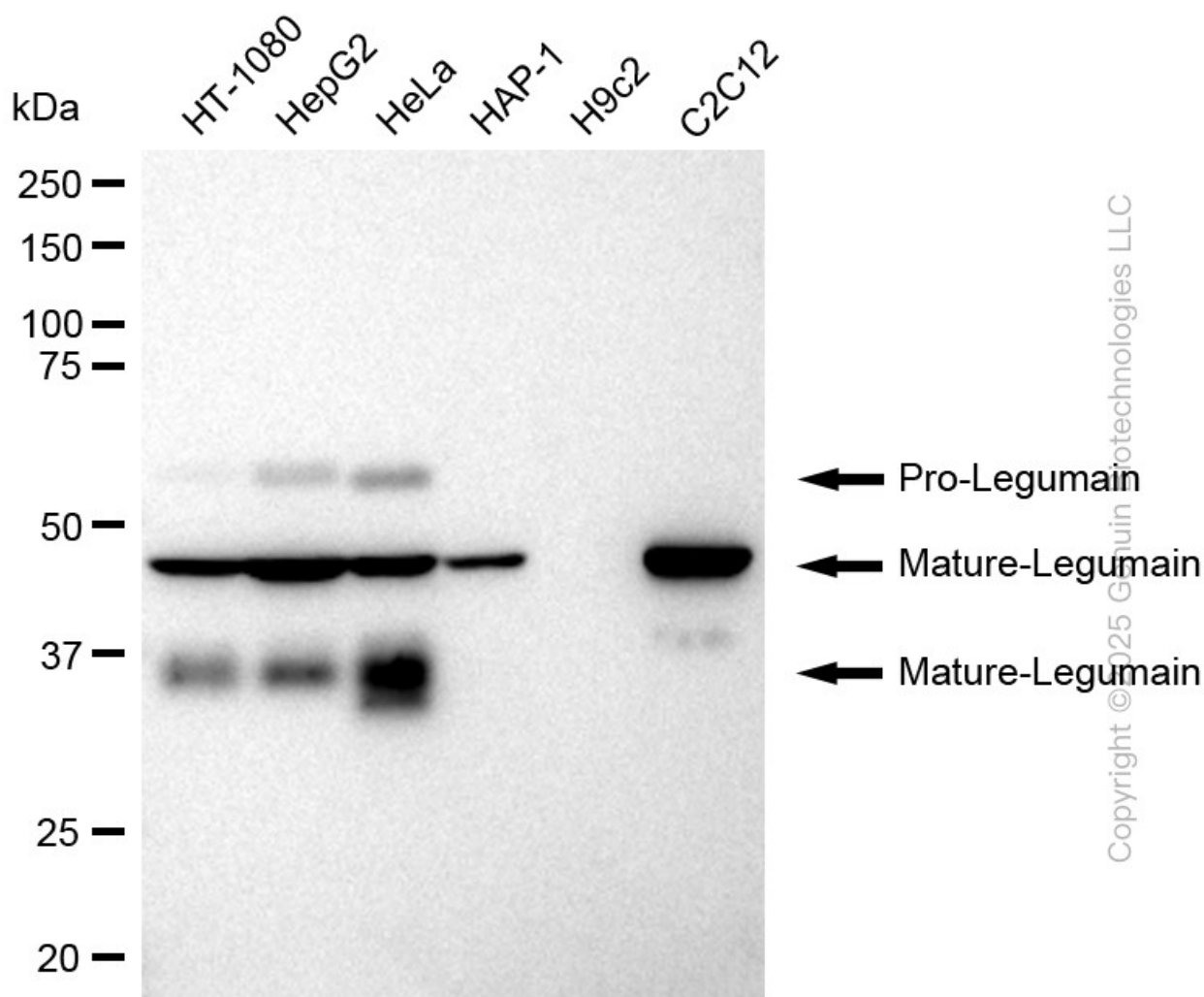
WWW.GENUINBIOTECH.COM



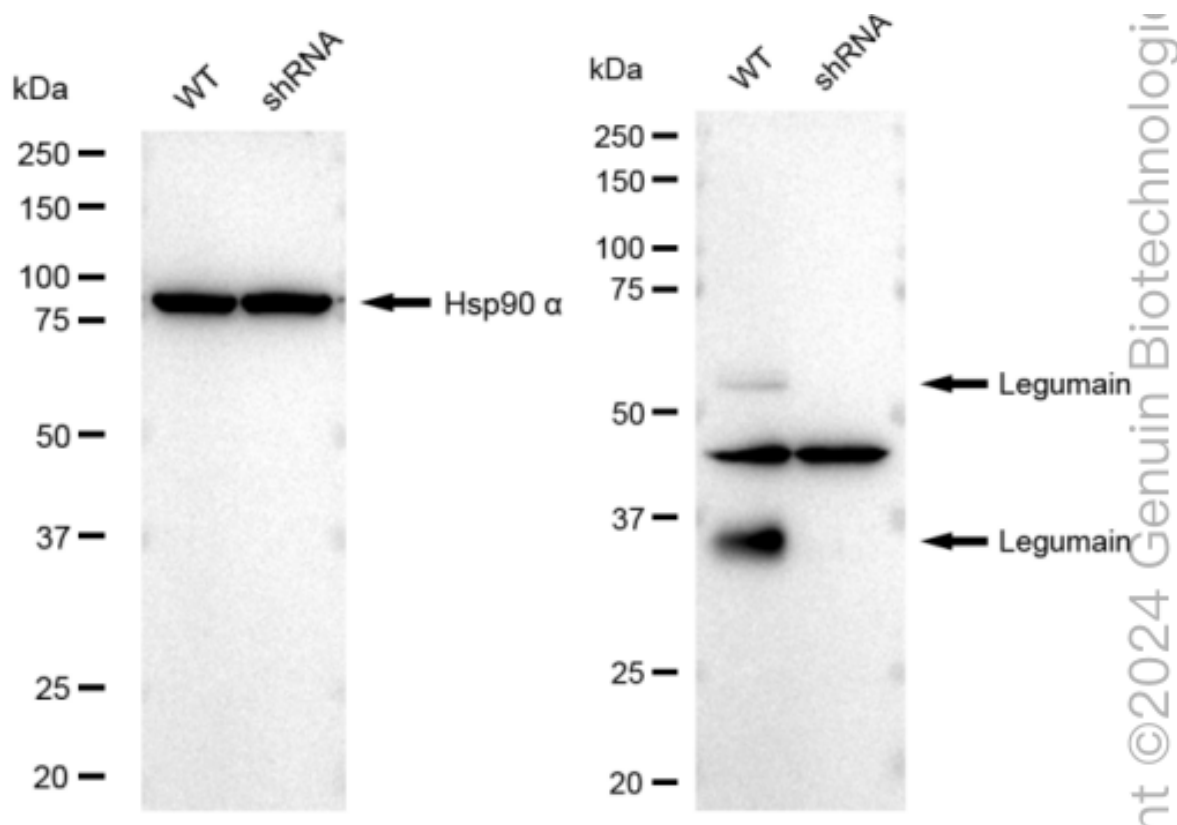
Flow cytometric analysis of Legumain expression in HeLa cells using Legumain antibody (Cat#65172, 1:2,000). Green, isotype control; red, Legumain.



Immunocytochemical staining of HeLa cells with anti-Legumain antibody (Cat#65172, 1:1,000). Nuclei were stained blue with DAPI; Legumain was stained magenta with Alexa Fluor® 647. Images were taken using Leica stellaris 5. Protein abundance based on laser Intensity and smart gain: Medium. Scale bar: 20 μ m.



Western blotting analysis using anti-Legumain antibody (Cat#65172). Total cell lysates (30 µg) from various cell lines were loaded and separated by SDS-PAGE. The blot was incubated with anti-Legumain antibody (Cat#65172, 1:5,000) and HRP-conjugated goat anti-rabbit secondary antibody (Cat#201, 1:20,000) respectively. Image was developed using FeQ™ ECL Substrate Kit (Cat#226).



Western blotting analysis using anti-Legumain antibody (Cat#65172). Legumain expression in wild type (WT) and legumain shRNA knockdown (KD) HeLa cells with 30 μ g of total cell lysates. Hsp90 α serves as a loading control. The blot was incubated with anti-Legumain antibody (Cat#65172, 1:5,000) and HRP-conjugated goat anti-rabbit secondary antibody (Cat#201, 1:20,000) respectively. Image was developed using FeQ™ ECL Substrate Kit (Cat#226).