

KD-Validated Anti-IKBKG Mouse Monoclonal Antibody



Catalog #: 65173

Aliases

IKBKG; Inhibitor Of Nuclear Factor Kappa B Kinase Regulatory Subunit Gamma; IKK-Gamma; IKKAP1; FIP-3; NEMO; FIP3; IKKG; Ikb Kinase-Associated Protein 1; NF-Kappa-B Essential Modulator; I-Kappa-B Kinase Subunit Gamma; Ikb Kinase Subunit Gamma; ZC2HC9; Fip3p; Inhibitor Of Kappa Light Polypeptide Gene Enhancer In B-Cells, Kinase Gamma; Inhibitor Of Nuclear Factor Kappa B Kinase Subunit Gamma; 14.7K (Adenovirus E3 Protein) Interacting Protein 3; NF-Kappa-B Essential Modifier; Incontinentia Pigmenti; IP1; IP2; Inhibitor Of Nuclear Factor Kappa-B Kinase Subunit Gamma; AMCBX1; EDAID1; IMD33; SAIDX ; IPD2; IP

Background

Gene Name: IKBKG

NCBI Gene Entry: [8517](#)

UniProt Entry: [Q9Y6K9](#)

Application Information

Molecular Weight: Predicted, 48 kDa; observed, 48 kDa

Clonality: Mouse monoclonal antibody

Clone ID: 24GB14145

Species Reactivity: Human

Applications Tested: Western blotting (WB), flow cytometry (FCM)

Immunogen

Recombinant protein of human IKBKG

Isotype

Mouse IgG1

Storage Buffer

Supplied in PBS (pH 7.4) containing 50% glycerol, and 0.02% sodium azide.

Storage

Store at -20 °C for one year.

Recommended Dilutions

Western Blotting (WB): 1:200-1:1,000

Flow Cytometry (FCM): 1:1,000

SUPPORT

SUPPORT@GENUINBIOTECH.COM
TEL: +1-540-855-7041

ORDERS

SALES@GENUINBIOTECH.COM
FAX: +1-540-855-7041

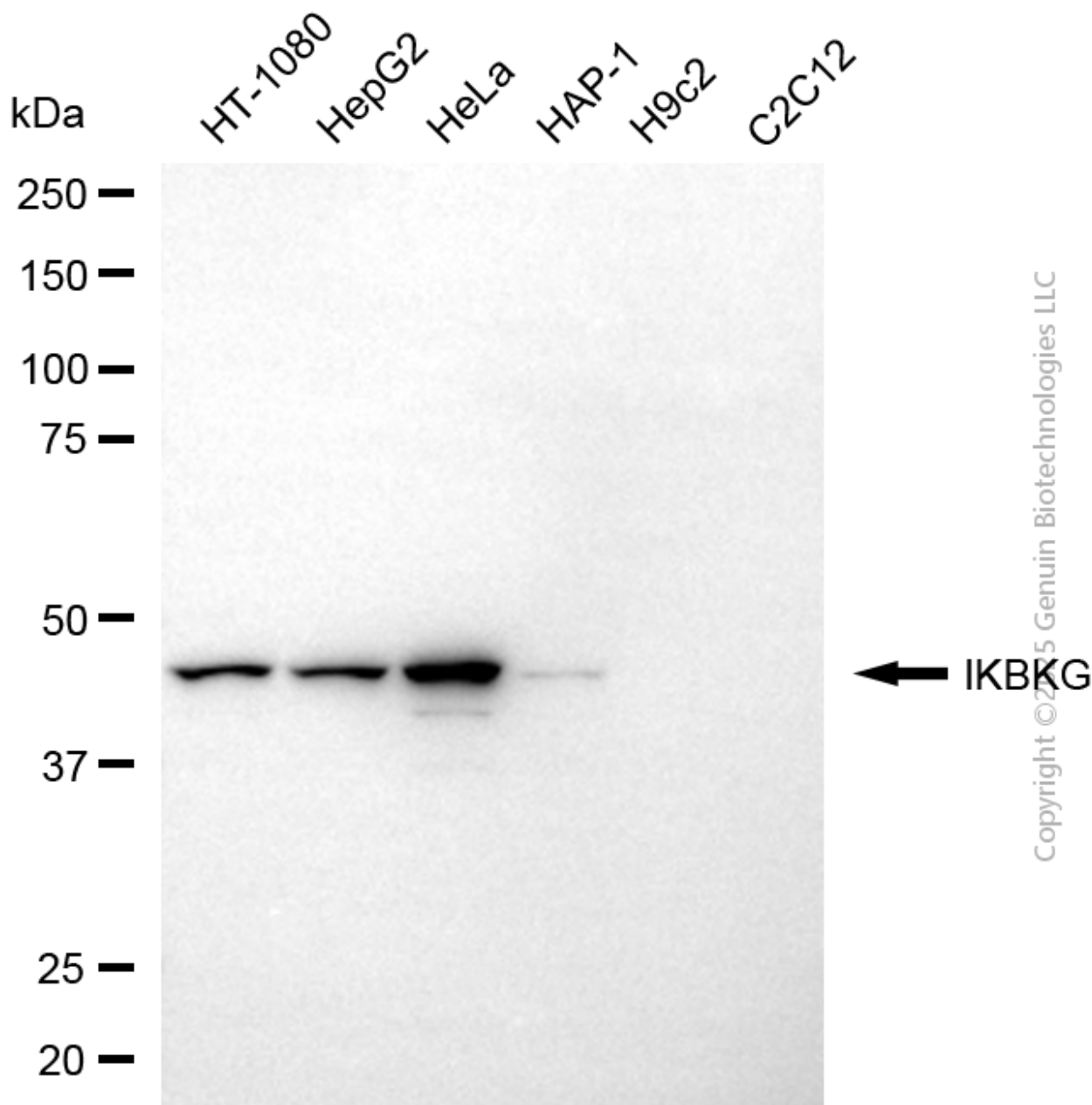
WWW.GENUINBIOTECH.COM

KD-Validated Anti-IKBKG Mouse Monoclonal Antibody

PAGE 2

Note: This product is for research use only.

Validation Data



Western blotting analysis using anti-IKBKG antibody (Cat#65173). Total cell lysates (30 µg) from various cell lines were loaded and separated by SDS-PAGE. The blot was incubated with anti-IKBKG antibody (Cat#65173, 1:1,000) and HRP-conjugated goat anti-mouse secondary antibody (Cat#101, 1:20,000) respectively. Image was developed using FeQ™ ECL Substrate Kit (Cat#226).

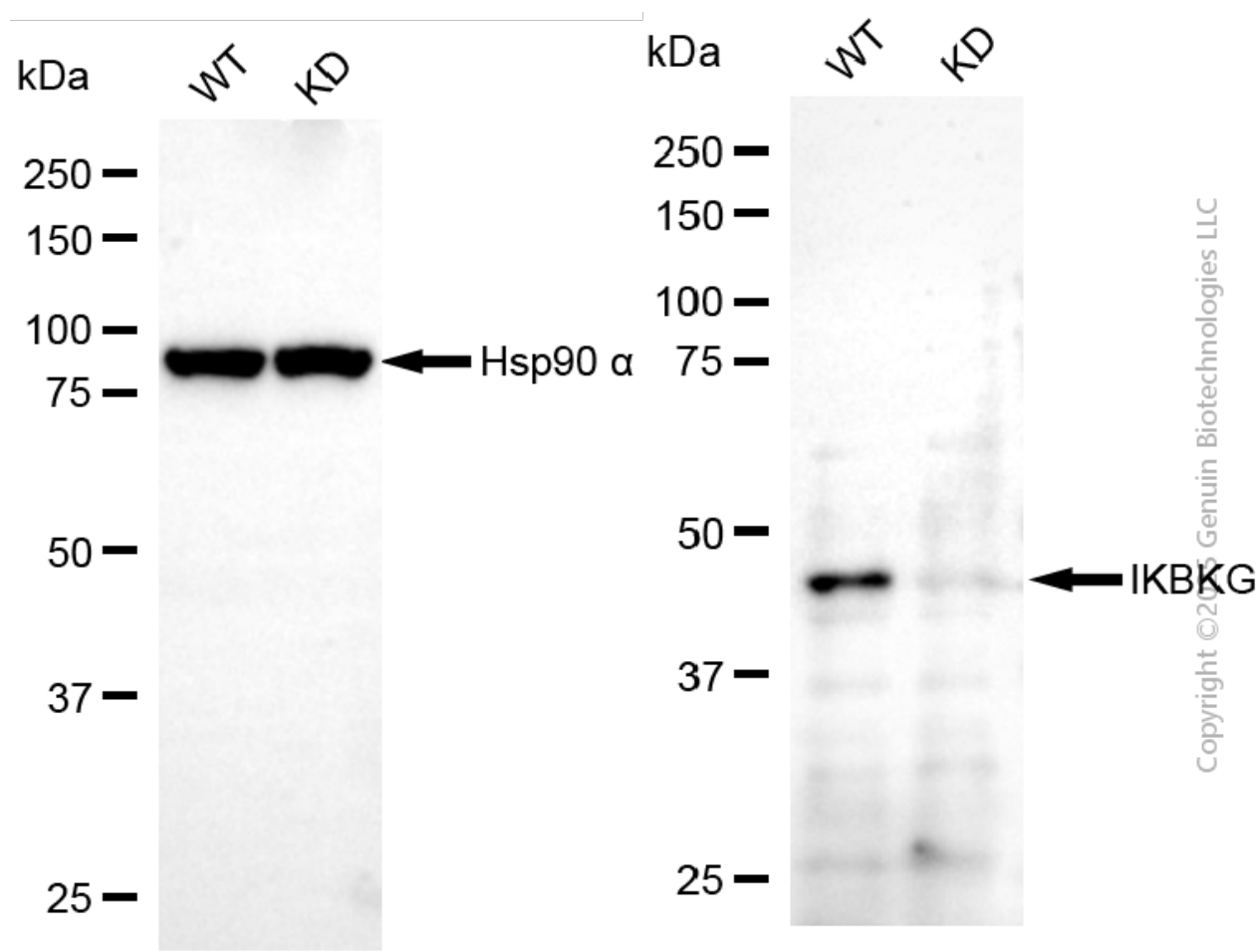
SUPPORT

SUPPORT@GENUINBIOTECH.COM
TEL: +1-540-855-7041

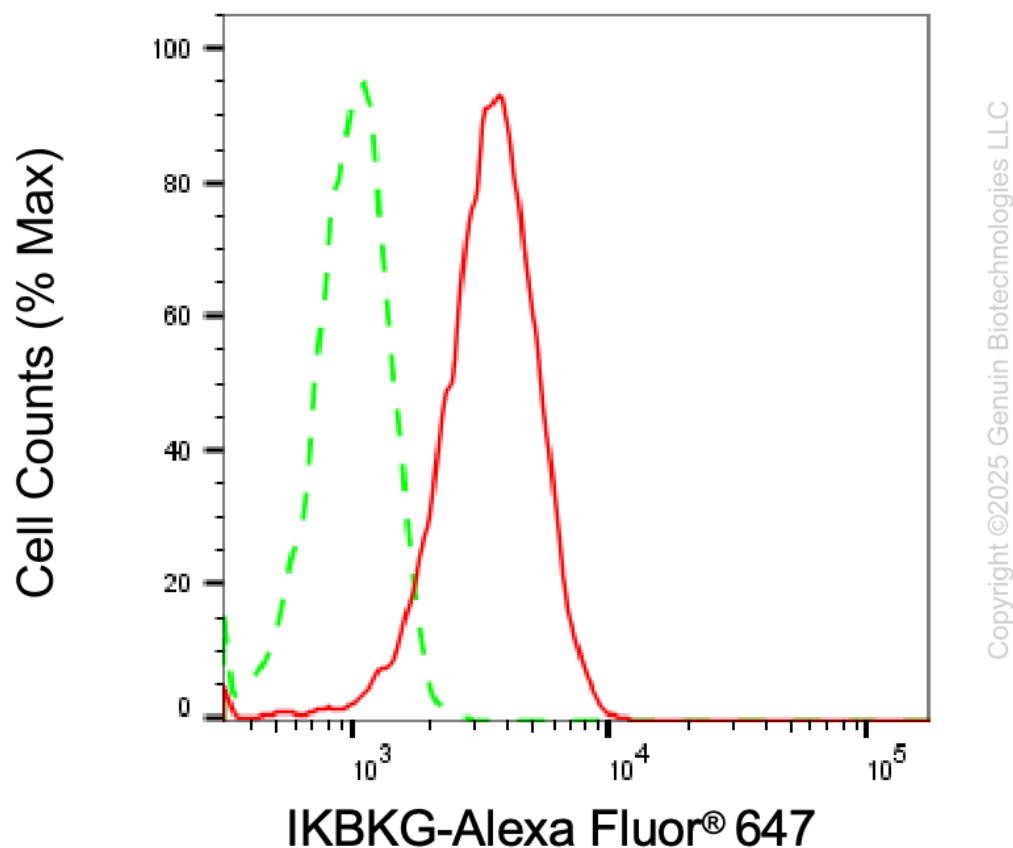
ORDERS

SALES@GENUINBIOTECH.COM
FAX: +1-540-855-7041

WWW.GENUINBIOTECH.COM



Western blotting analysis using anti-IKBKG antibody (Cat#65173). IKBKG expression in wild-type (WT) and IKBKG knockdown (KD) HSHC cells with 20 µg of total cell lysates. Hsp90 α serves as a loading control. The blot was incubated with anti-IKBKG antibody (Cat#65173, 1:1,000) and HRP-conjugated goat anti-mouse secondary antibody (Cat#101, 1:20,000) respectively. Image was developed using FeQ™ ECL Substrate Kit (Cat#226).



Flow cytometric analysis of IKBKG expression in HeLa cells using anti-IKBKG antibody (Cat#65173, 1:1,000). Green, isotype control; red, IKBKG.