

KD-Validated Anti-UFM1 Rabbit Monoclonal Antibody



Catalog #: 65192

Aliases

UFM1; Ubiquitin Fold Modifier 1; C13orf20; Ubiquitin-Fold Modifier 1; BA131P10.1; Chromosome 13 Open Reading Frame 20; BM-002; HLD14

Background

Gene Name: UFM1

NCBI Gene Entry: [51569](#)

UniProt Entry: [P61960](#)

Application Information

Molecular Weight: Predicted, 9 kDa; observed, 10 kDa

Clonality: Rabbit monoclonal antibody

Clone ID: 25GB85

Species Reactivity: Human, mouse, rat

Applications Tested: Western blotting (WB), flow cytometry (FCM), immunocytochemistry (IC)

Immunogen

A synthesized peptide derived from human UFM1

Isotype

Rabbit IgG

Storage Buffer

Supplied in PBS (pH 7.4) containing 50% glycerol, and 0.02% sodium azide.

Storage

Store at -20 °C for one year.

Recommended Dilutions

Western Blotting (WB): 1:1,000-1:5,000

Flow Cytometry (FCM): 1:2,000

Immunocytochemistry (IC): 1:100-1:1,000

Note: This product is for research use only.

Validation Data

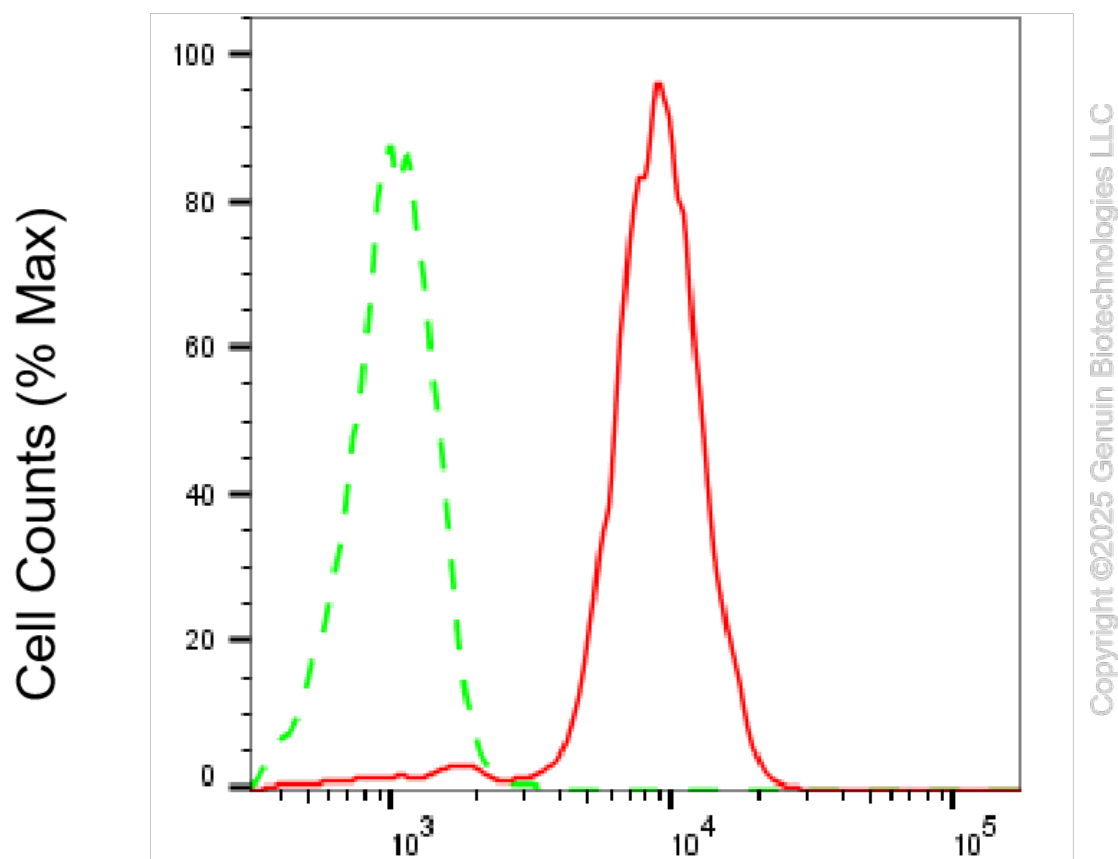
SUPPORT

SUPPORT@GENUINBIOTECH.COM
TEL: +1-540-855-7041

ORDERS

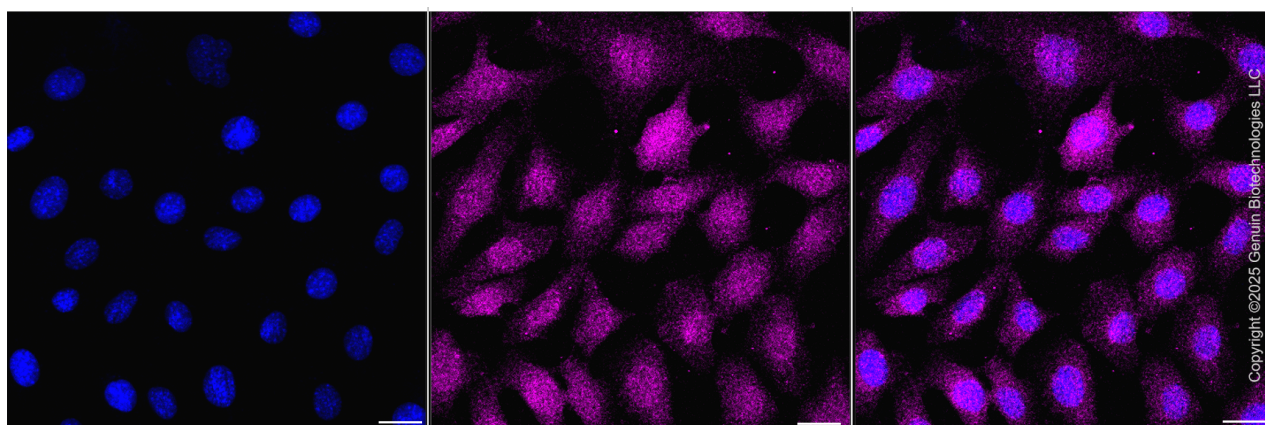
SALES@GENUINBIOTECH.COM
FAX: +1-540-855-7041

WWW.GENUINBIOTECH.COM



UFM1-Alexa Fluor® 647

Flow cytometric analysis of UFM1 expression in C2C12 cells using anti-UFM1 antibody (Cat#65192, 1:2,000). Green, isotype control; red, UFM1.



Immunocytochemical staining of C2C12 cells with anti-UFM1 antibody (Cat#65192, 1:1,000). Nuclei were stained blue with DAPI; UFM1 was stained magenta with Alexa Fluor® 647. Images were taken using Leica stellaris 5. Protein abundance based on laser Intensity and smart gain:

SUPPORT

SUPPORT@GENUINBIOTECH.COM
TEL: +1-540-855-7041

ORDERS

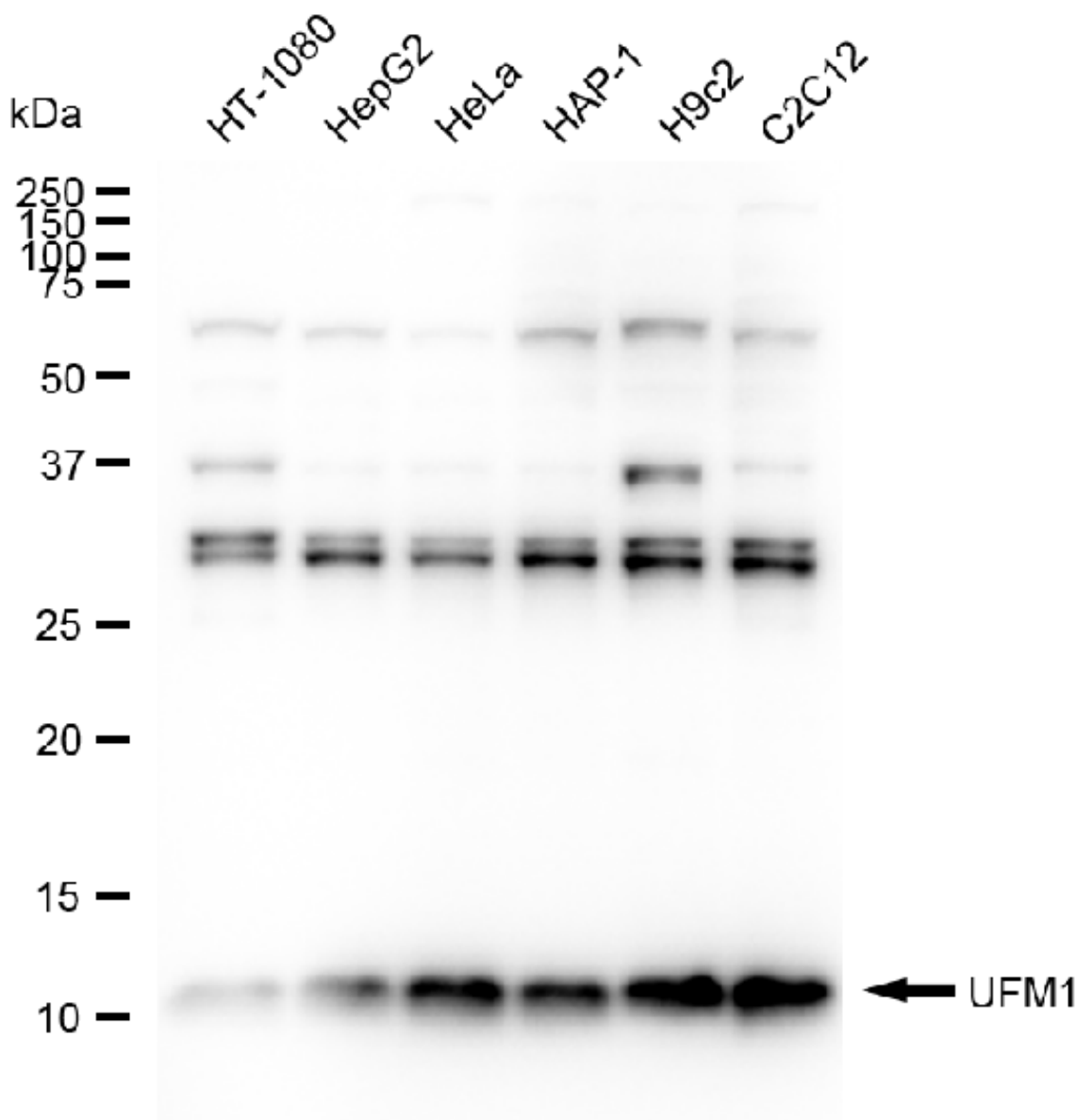
SALES@GENUINBIOTECH.COM
FAX: +1-540-855-7041

WWW.GENUINBIOTECH.COM

KD-Validated Anti-UFM1 Rabbit Monoclonal Antibody

PAGE 3

Medium. Scale bar, 20 μ m.



Western blotting analysis using anti-UFM1 antibody (Cat#65192). Total cell lysates (30 μ g) from various cell lines were loaded and separated by SDS-PAGE. The blot was incubated with anti-UFM1 antibody (Cat#65192, 1:5,000) and HRP-conjugated goat anti-rabbit secondary antibody (Cat#201, 1:20,000) respectively. Image was developed using NaQ™ ECL Substrate Kit (Cat#716).

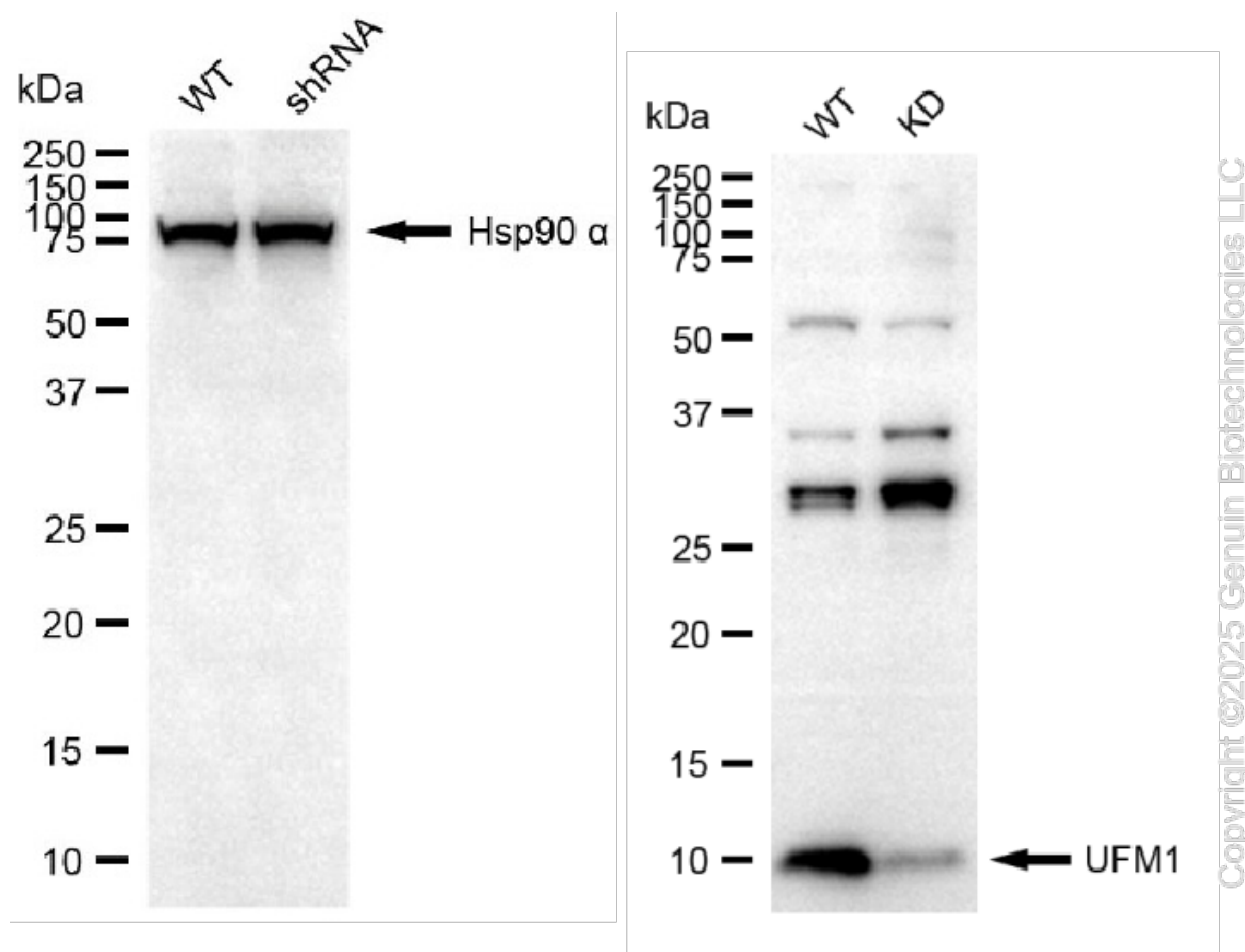
SUPPORT

SUPPORT@GENUINBIOTECH.COM
TEL: +1-540-855-7041

ORDERS

SALES@GENUINBIOTECH.COM
FAX: +1-540-855-7041

WWW.GENUINBIOTECH.COM



Western blotting analysis using anti-UFM1 antibody (Cat#65192). UFM1 expression in wild-type (WT) and UFM1 shRNA knockdown (KD) HT-1080 cells with 20 µg of total cell lysates. Hsp90 α serves as a loading control. The blot was incubated with anti-UFM1 antibody (Cat#65192, 1:5,000) and HRP-conjugated goat anti-rabbit secondary antibody (Cat#201, 1:20,000) respectively. Image was developed using FeQ™ ECL Substrate Kit (Cat#226).