

KD-Validated Anti-CENPA Rabbit Monoclonal Antibody



Catalog #: 65194

Aliases

CENPA; Centromere Protein A; CENP-A; Histone H3-Like Centromeric Protein A; CenH3; Centromere-Specific Histone; Centromere Protein A, 17kDa; Centromere Autoantigen A; Centromere Protein A (17kD)

Background

Gene Name: CENPA

NCBI Gene Entry: [1058](#)

UniProt Entry: [P49450](#)

Application Information

Molecular Weight: Predicted, 16 kDa; observed, 18 kDa

Clonality: Rabbit monoclonal antibody

Clone ID: 25GB95

Species Reactivity: Human

Applications Tested: Western blotting (WB), immunocytochemistry (IC)

Immunogen

A synthesized peptide derived from human CENPA

Isotype

Rabbit IgG

Storage Buffer

Supplied in PBS (pH 7.4) containing 50% glycerol, and 0.02% sodium azide.

Storage

Store at -20 °C for one year.

Recommended Dilutions

Western Blotting (WB): 1:1,000-1:5,000

Immunocytochemistry (IC): 1:100-1:1,000

Note: This product is for research use only.

Validation Data

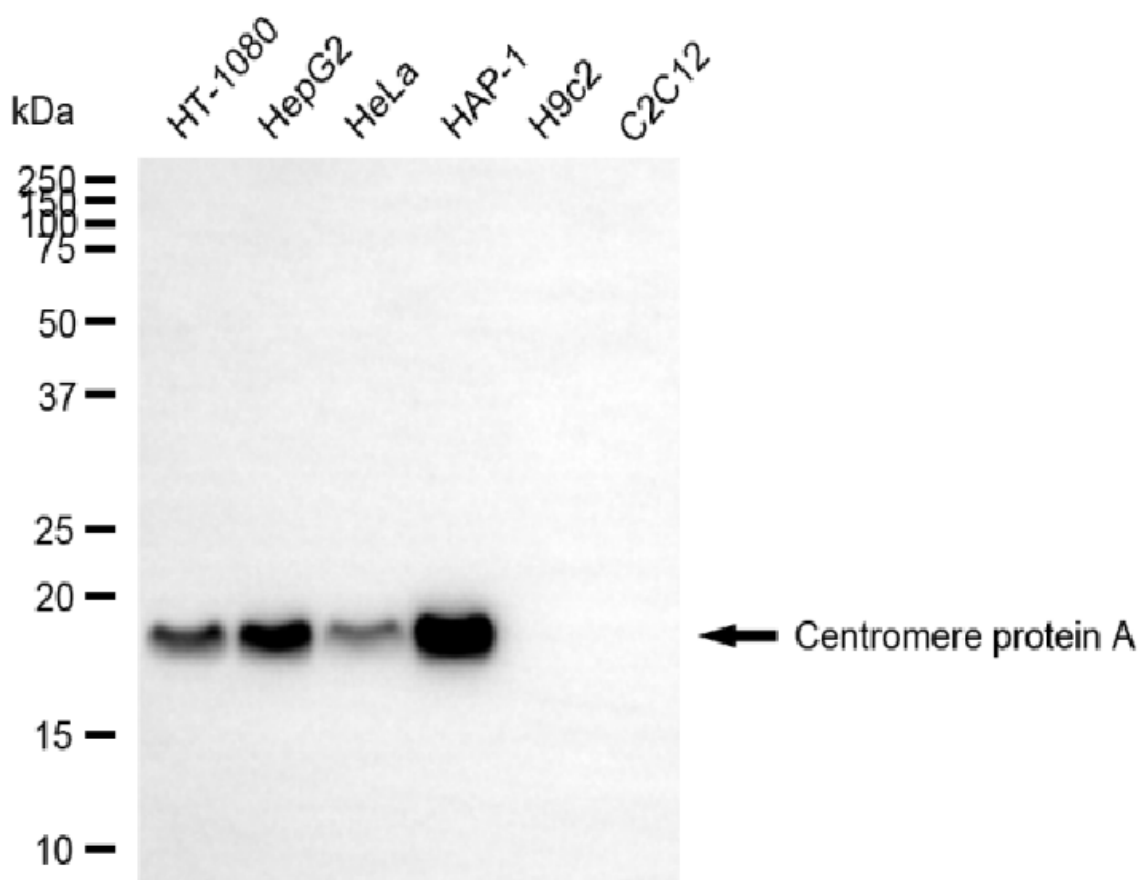
SUPPORT

SUPPORT@GENUINBIOTECH.COM
TEL: +1-540-855-7041

ORDERS

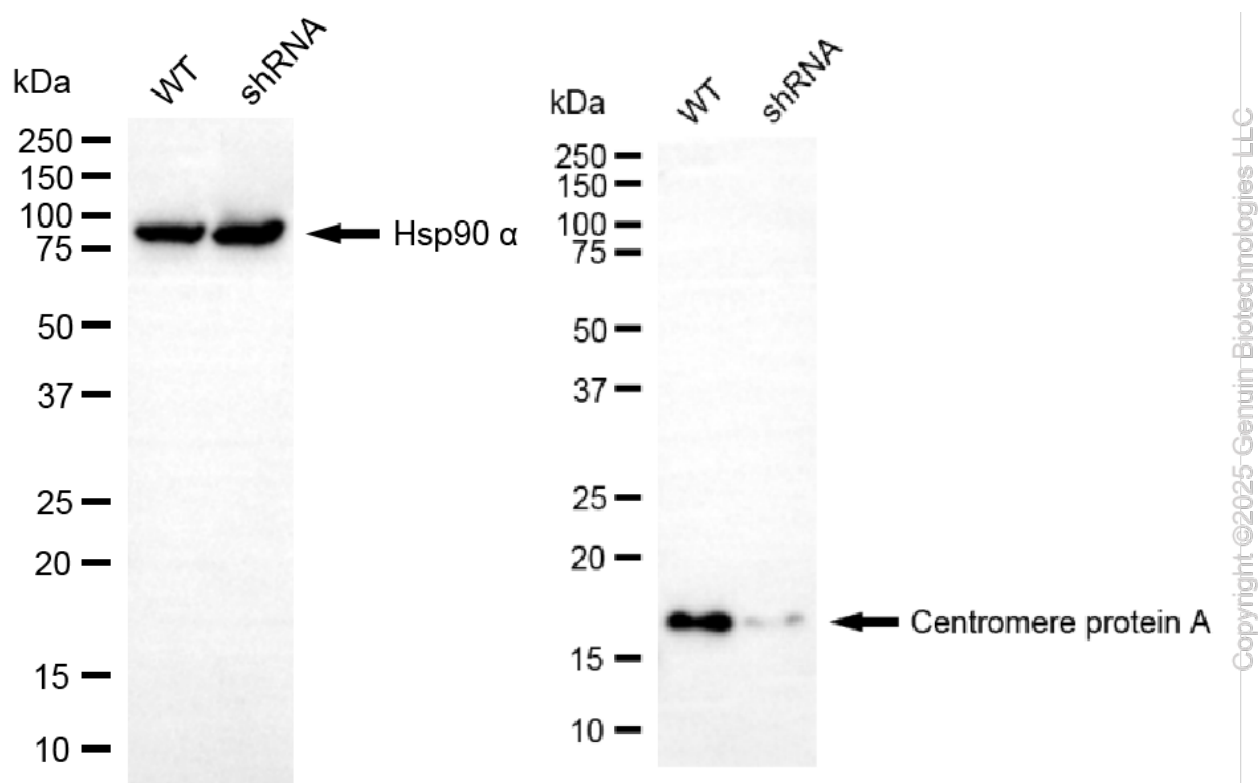
SALES@GENUINBIOTECH.COM
FAX: +1-540-855-7041

WWW.GENUINBIOTECH.COM

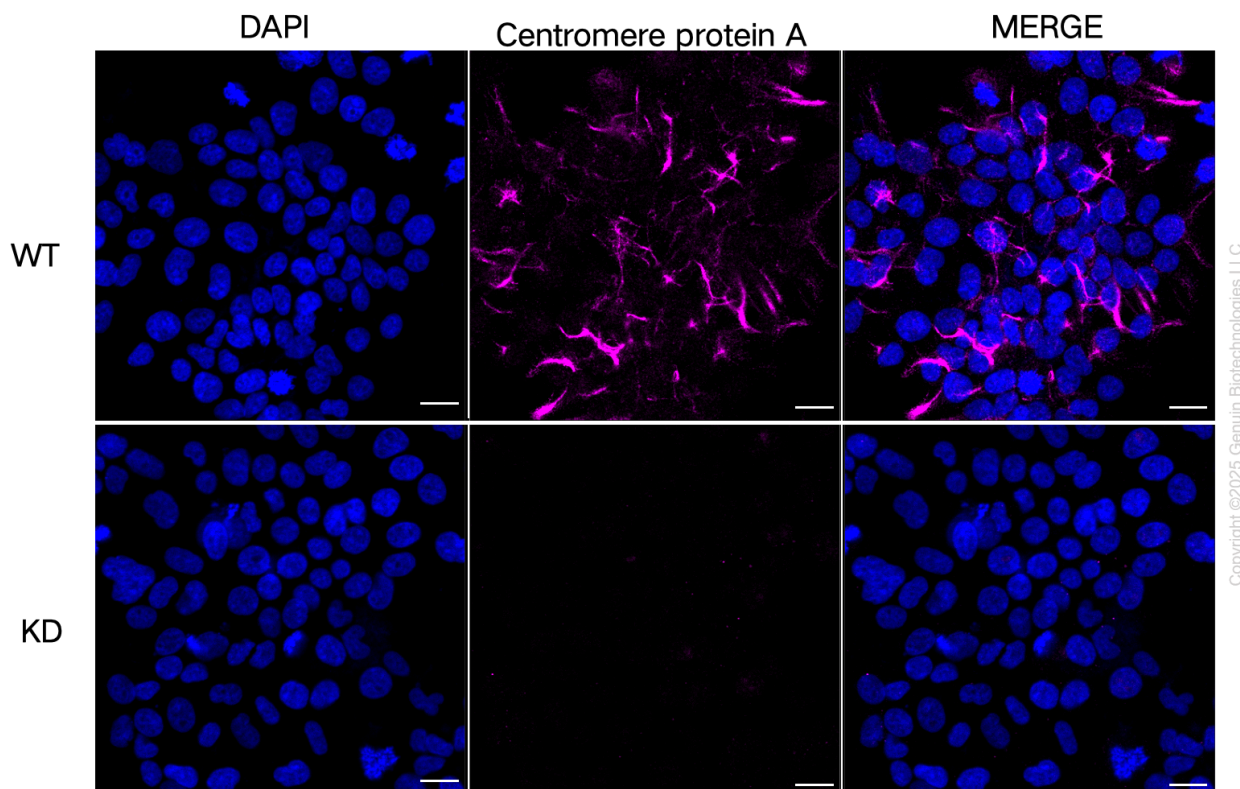


Copyright ©2025 Genuin Biotechnologies LLC

Western blotting analysis using anti-centromere protein A antibody (Cat#65194). Total cell lysates (30 µg) from various cell lines were loaded and separated by SDS-PAGE. The blot was incubated with anti-centromere protein A antibody (Cat#65194, 1:5,000) and HRP-conjugated goat anti-rabbit secondary antibody (Cat#201, 1:20,000) respectively. Image was developed using FeQ™ ECL Substrate Kit (Cat#226).



Western blotting analysis using anti-centromere protein A antibody (Cat#65194). Centromere protein A expression in wild-type (WT) and centromere protein A (CENPA) shRNA knockdown (KD) HeLa cells with 20 µg of total cell lysates. Hsp90 α serves as a loading control. The blot was incubated with anti-centromere protein A antibody (Cat#65194, 1:5,000) and HRP-conjugated goat anti-rabbit secondary antibody (Cat#201, 1:20,000) respectively. Image was developed using FeQ™ ECL Substrate Kit (Cat#226).



Immunocytochemical staining of HeLa cells using anti-Centromere protein A antibody (Cat#65194, 1:1,000), Top panel: wild-type (WT); Bottom panel: Centromere protein A shRNA knockdown (KD). Nuclei were stained blue with DAPI; Acyl-CoA dehydrogenase short chain was stained magenta with Alexa Fluor® 647. Scale bar, 20 μ m.