

# KD-Validated Anti-CXXC1 Rabbit Monoclonal Antibody



**Catalog #: 65201**

## Aliases

CXXC1; CXXC Finger Protein; PCCX1; PHF18; CGBP; CFP1; HsT2645; ZCGPC1; HCGBP; SPP1; DNA-Binding Protein With PHD Finger And CXXC Domain; PHD Finger And CXXC Domain-Containing Protein 1; Zinc Finger, CpG Binding-Type Containing 1; CXXC-Type Zinc Finger Protein 1; CXXC Finger 1 (PHD Domain); CpG Binding Protein; CpG-Binding Protein; 2410002I16Rik; 5830420C16Rik

## Background

Gene Name: CXXC1

NCBI Gene Entry: [30827](#)

UniProt Entry: [Q9P0U4](#)

## Application Information

Molecular Weight: Predicted, 76 kDa; observed, 75 kDa

Clonality: Rabbit monoclonal antibody

Clone ID: 25GB130

Species Reactivity: Human, mouse, rat

Applications Tested: Western blotting (WB), flow cytometry (FCM), immunocytochemistry (IC)

## Immunogen

A synthesized peptide derived from human CGBP

## Isotype

Rabbit IgG

## Storage Buffer

Supplied in PBS (pH 7.4) containing 50% glycerol, and 0.02% sodium azide.

## Storage

Store at -20 °C for one year.

## Recommended Dilutions

Western Blotting (WB): 1:1,000-1:5,000

Flow Cytometry (FCM): 1:1,000

Immunocytochemistry (IC): 1:100-1:1,000

---

### SUPPORT

SUPPORT@GENUINBIOTECH.COM  
TEL: +1-540-855-7041

### ORDERS

SALES@GENUINBIOTECH.COM  
FAX: +1-540-855-7041

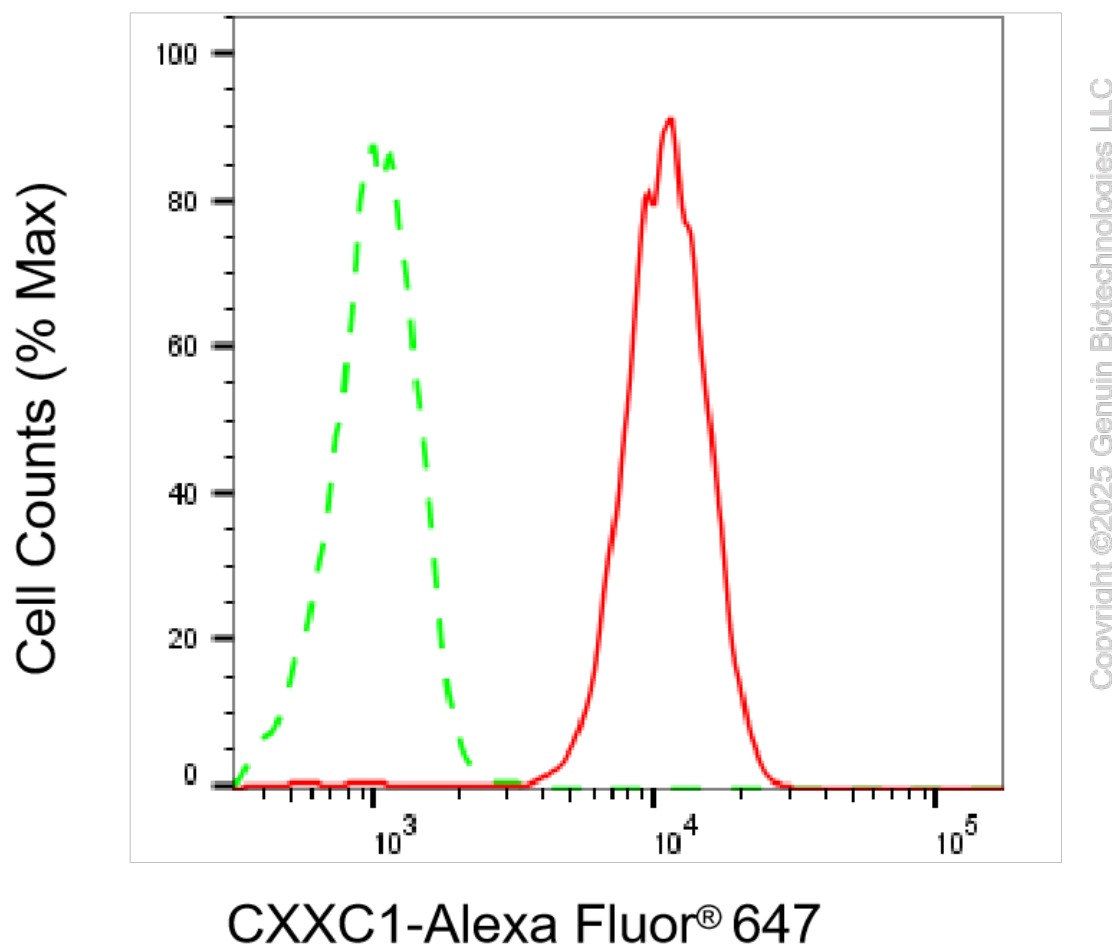
[WWW.GENUINBIOTECH.COM](http://WWW.GENUINBIOTECH.COM)

## KD-Validated Anti-CXXC1 Rabbit Monoclonal Antibody

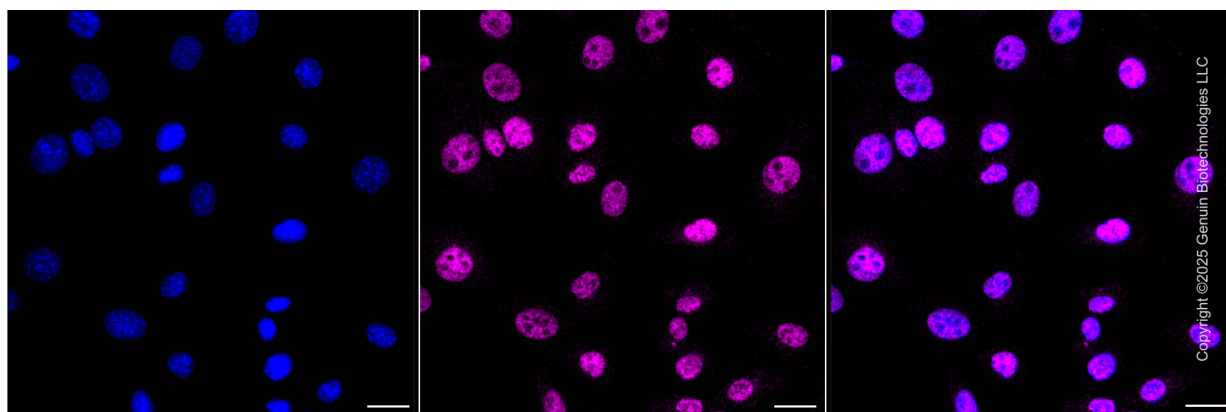
PAGE 2

**Note:** This product is for research use only.

### Validation Data



Flow cytometric analysis of CXXC1 expression in C2C12 cells using anti-CXXC1 antibody (Cat#65201, 1:2,000). Green, isotype control; red, CXXC1.



Immunocytochemical staining of HeLa cells with anti-CXXC1 antibody (Cat#65201, 1:1,000) .

#### SUPPORT

SUPPORT@GENUINBIOTECH.COM  
TEL: +1-540-855-7041

#### ORDERS

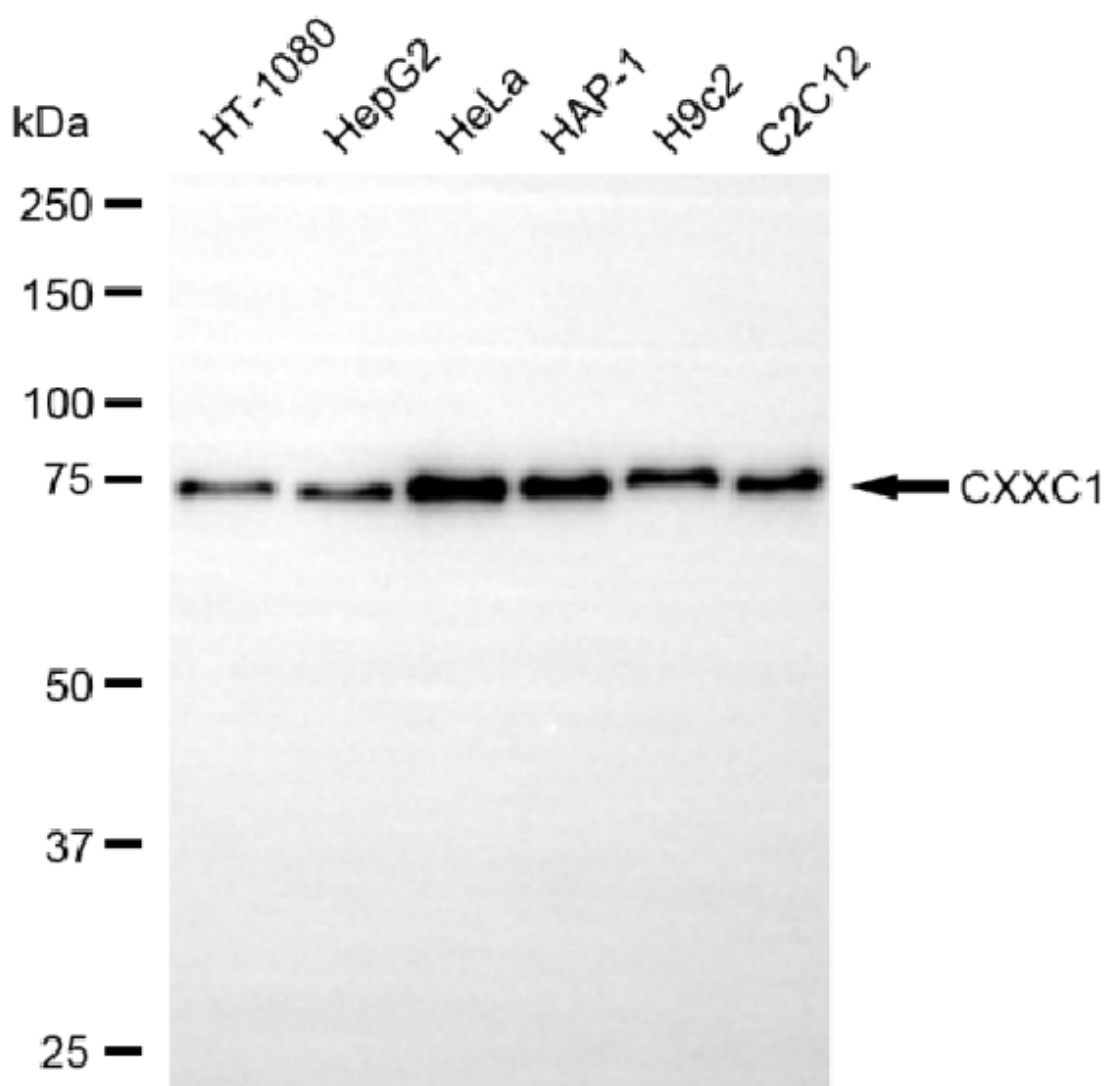
SALES@GENUINBIOTECH.COM  
FAX: +1-540-855-7041

[WWW.GENUINBIOTECH.COM](http://WWW.GENUINBIOTECH.COM)

## KD-Validated Anti-CXXC1 Rabbit Monoclonal Antibody

PAGE 3

Nuclei were stained blue with DAPI; CXXC1 was stained magenta with Alexa Fluor® 647. Images were taken using Leica stellaris 5. Protein abundance based on laser Intensity and smart gain: Low. Scale bar, 20 µm.



Copyright ©2025 Genuin Biotechnologies LLC

Western blotting analysis using anti-CXXC1 antibody (Cat#65201). Total cell lysates (30 µg) from various cell lines were loaded and separated by SDS-PAGE. The blot was incubated with anti-CXXC1 antibody (Cat#65201, 1:5,000) and HRP-conjugated goat anti-rabbit secondary antibody (Cat#201, 1:20,000) respectively. Image was developed using NaQ™ ECL Substrate Kit (Cat#716).

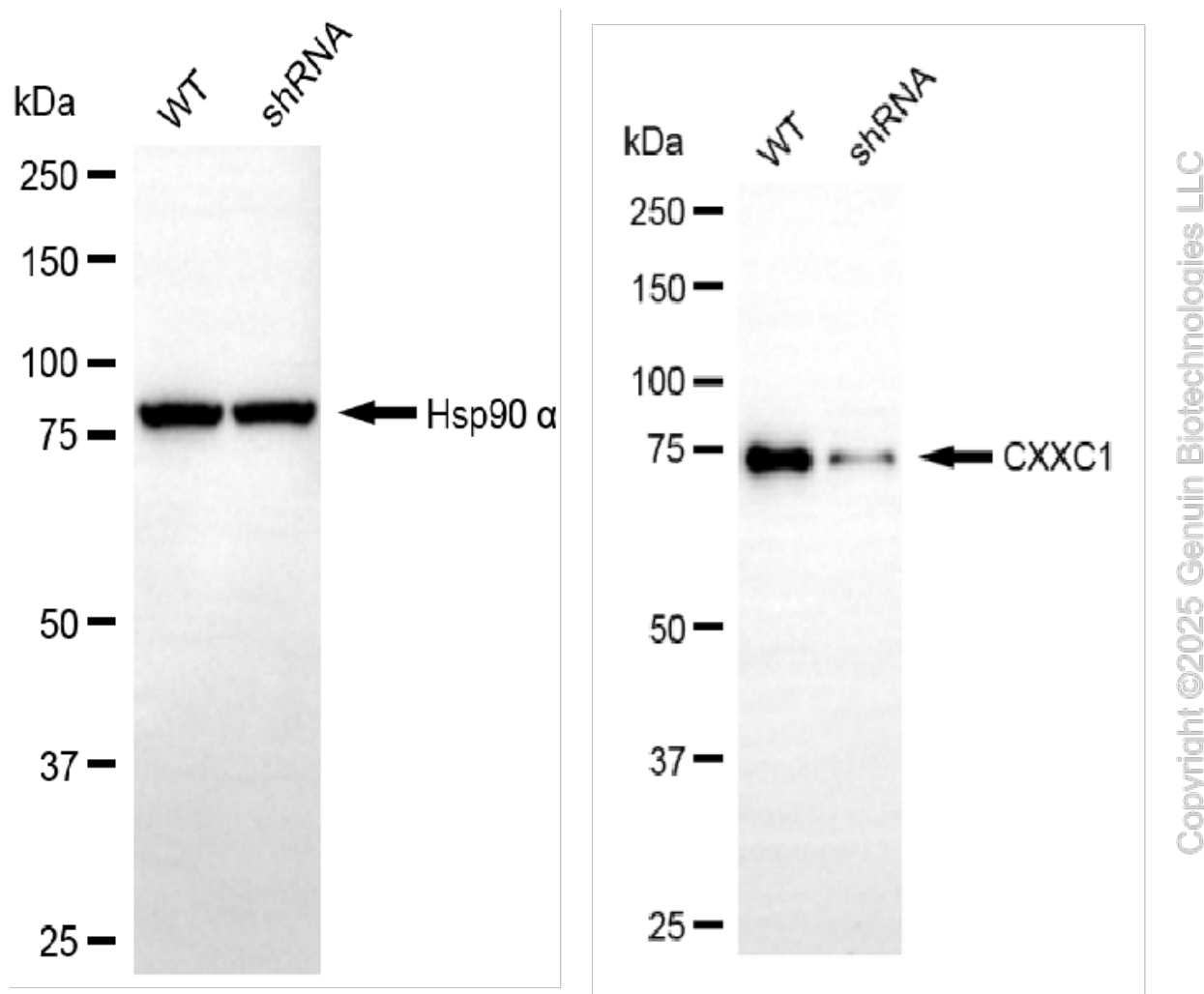
### SUPPORT

SUPPORT@GENUINBIOTECH.COM  
TEL: +1-540-855-7041

### ORDERS

SALES@GENUINBIOTECH.COM  
FAX: +1-540-855-7041

[WWW.GENUINBIOTECH.COM](http://WWW.GENUINBIOTECH.COM)



Western blotting analysis using anti-CXXC1 antibody (Cat#65201). CXXC1 expression in wild-type (WT) and CXXC1 shRNA knockdown (KD) HeLa cells with 20  $\mu$ g of total cell lysates. Hsp90  $\alpha$  serves as a loading control. The blot was incubated with anti-CXXC1 antibody (Cat#65201, 1:5,000) and HRP-conjugated goat anti-rabbit secondary antibody (Cat#201, 1:20,000) respectively. Image was developed using NaQ™ ECL Substrate Kit (Cat#716).