

KD-Validated Anti-CPSF6 Rabbit Monoclonal Antibody



Catalog #: 65204

Aliases

CPSF6; Cleavage And Polyadenylation Specific Factor 6; CFIM68; Cleavage Factor Im Complex 68 KDa Subunit; HPBR11-4; HPBR11-7; CFIM72; CFIM; Cleavage And Polyadenylation Specificity Factor 68 KDa Subunit; Cleavage And Polyadenylation Specificity Factor Subunit 6; Cleavage And Polyadenylation Specific Factor 6, 68kDa; Pre-mRNA Cleavage Factor Im 68 KDa Subunit; CPSF 68 KDa Subunit; Protein HPBR11-4/7; Cleavage And Polyadenylation Specific Factor 6, 68kD Subunit; Pre-mRNA Cleavage Factor I, 68kD Subunit; Pre-mRNA Cleavage Factor Im (68kD); CFIm68

Background

Gene Name: CPSF6

NCBI Gene Entry: [11052](#)

UniProt Entry: [Q16630](#)

Application Information

Molecular Weight: Predicted, 59 kDa; observed, 68 kDa

Clonality: Rabbit monoclonal antibody

Clone ID: 25GB145

Species Reactivity: Human, mouse, rat

Applications Tested: Western blotting (WB), flow cytometry (FCM), immunocytochemistry (IC)

Immunogen

A synthesized peptide derived from human CPSF6

Isotype

Rabbit IgG

Storage Buffer

Supplied in PBS (pH 7.4) containing 50% glycerol, and 0.02% sodium azide.

Storage

Store at -20 °C for one year.

Recommended Dilutions

Western Blotting (WB): 1:1,000-1:5,000

Flow Cytometry (FCM): 1:2,000

SUPPORT

SUPPORT@GENUINBIOTECH.COM
TEL: +1-540-855-7041

ORDERS

SALES@GENUINBIOTECH.COM
FAX: +1-540-855-7041

WWW.GENUINBIOTECH.COM

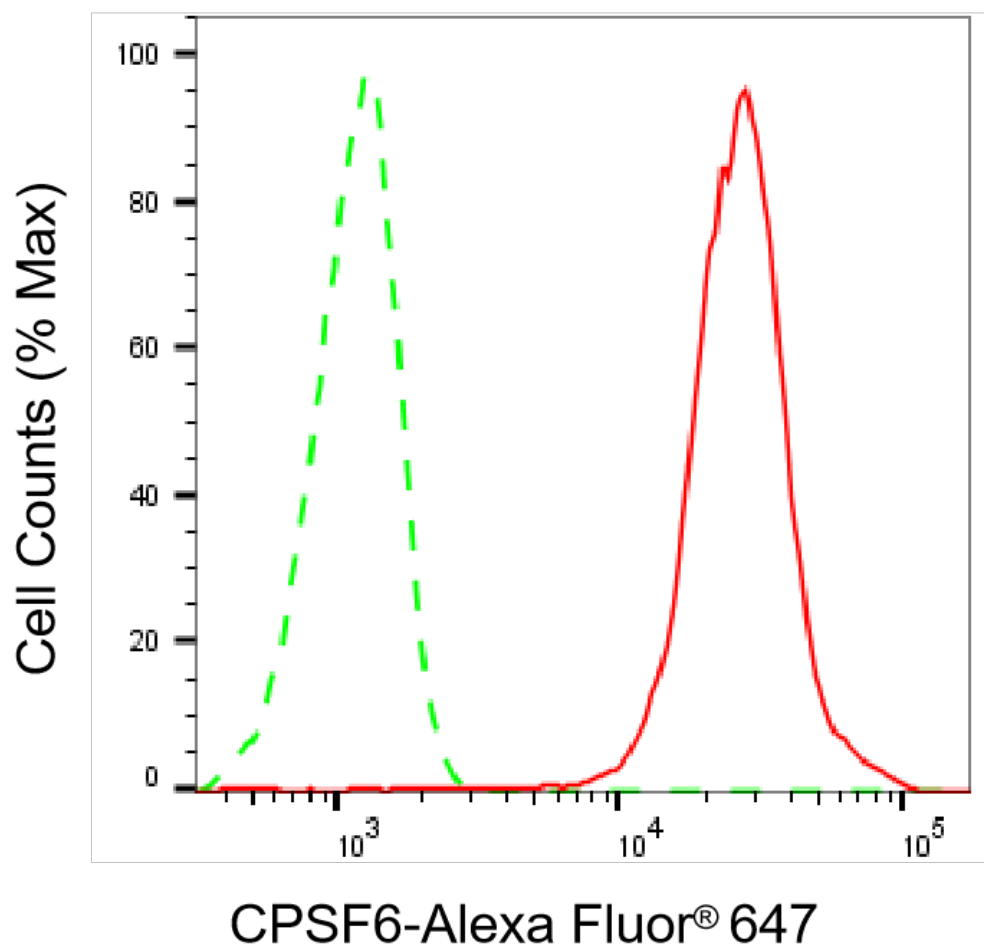
KD-Validated Anti-CPSF6 Rabbit Monoclonal Antibody

PAGE 2

Immunocytochemistry (IC): 1:100-1:1,000

Note: This product is for research use only.

Validation Data



Flow cytometric analysis of CPSF6 expression in HepG2 cells using anti-CPSF6 antibody (Cat#65204, 1:2,000). Green, isotype control; red, CPSF6.

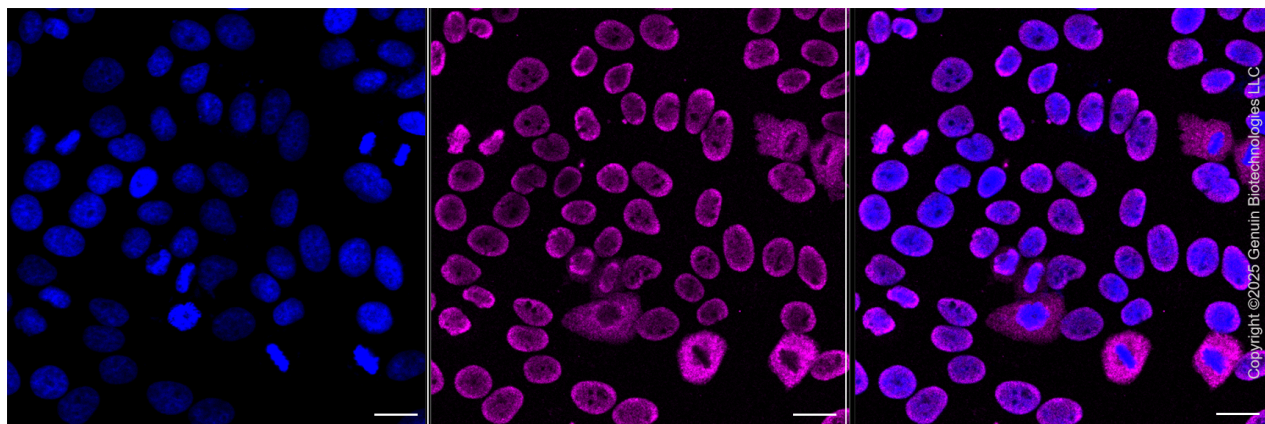
SUPPORT

SUPPORT@GENUINBIOTECH.COM
TEL: +1-540-855-7041

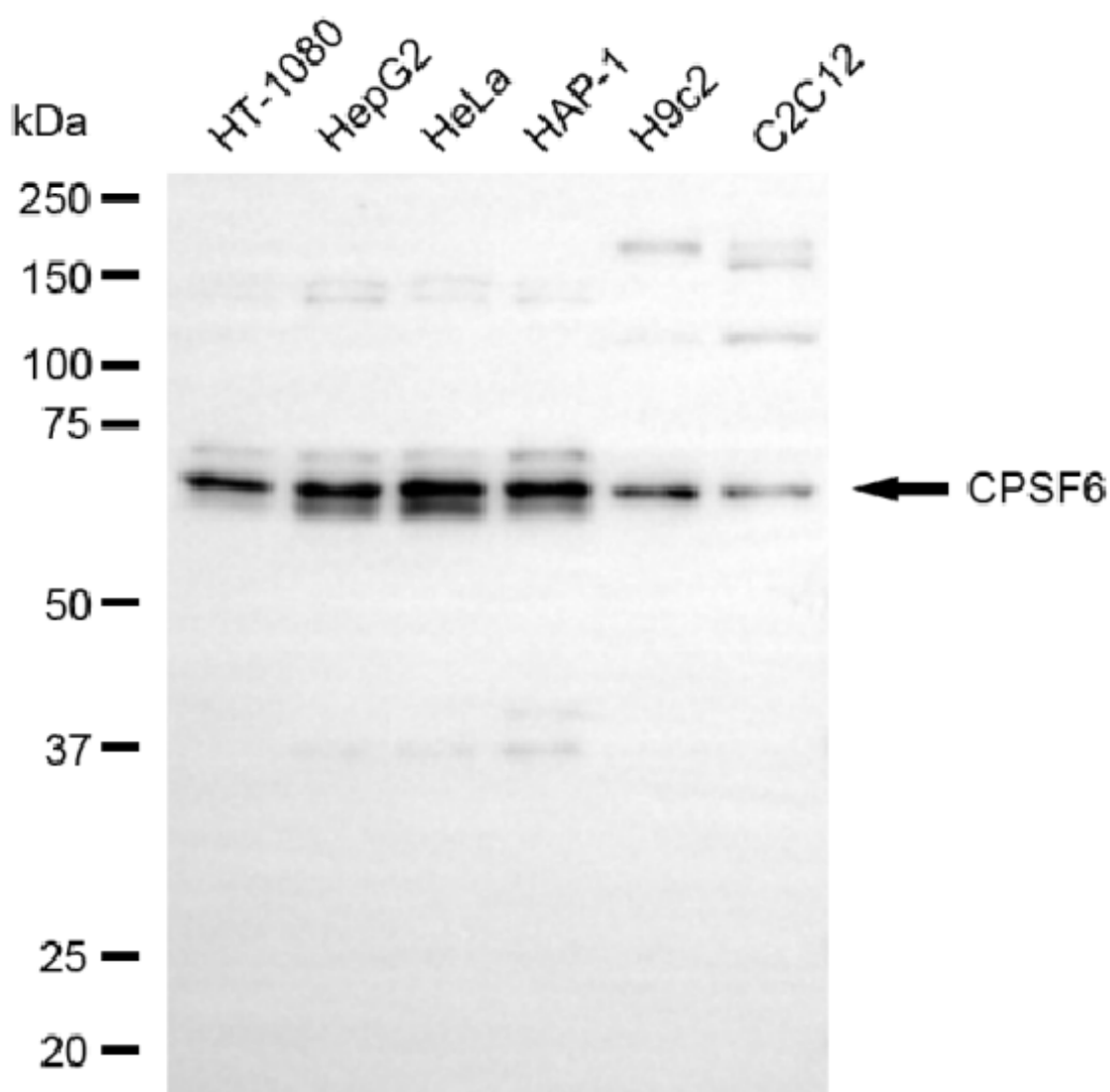
ORDERS

SALES@GENUINBIOTECH.COM
FAX: +1-540-855-7041

WWW.GENUINBIOTECH.COM

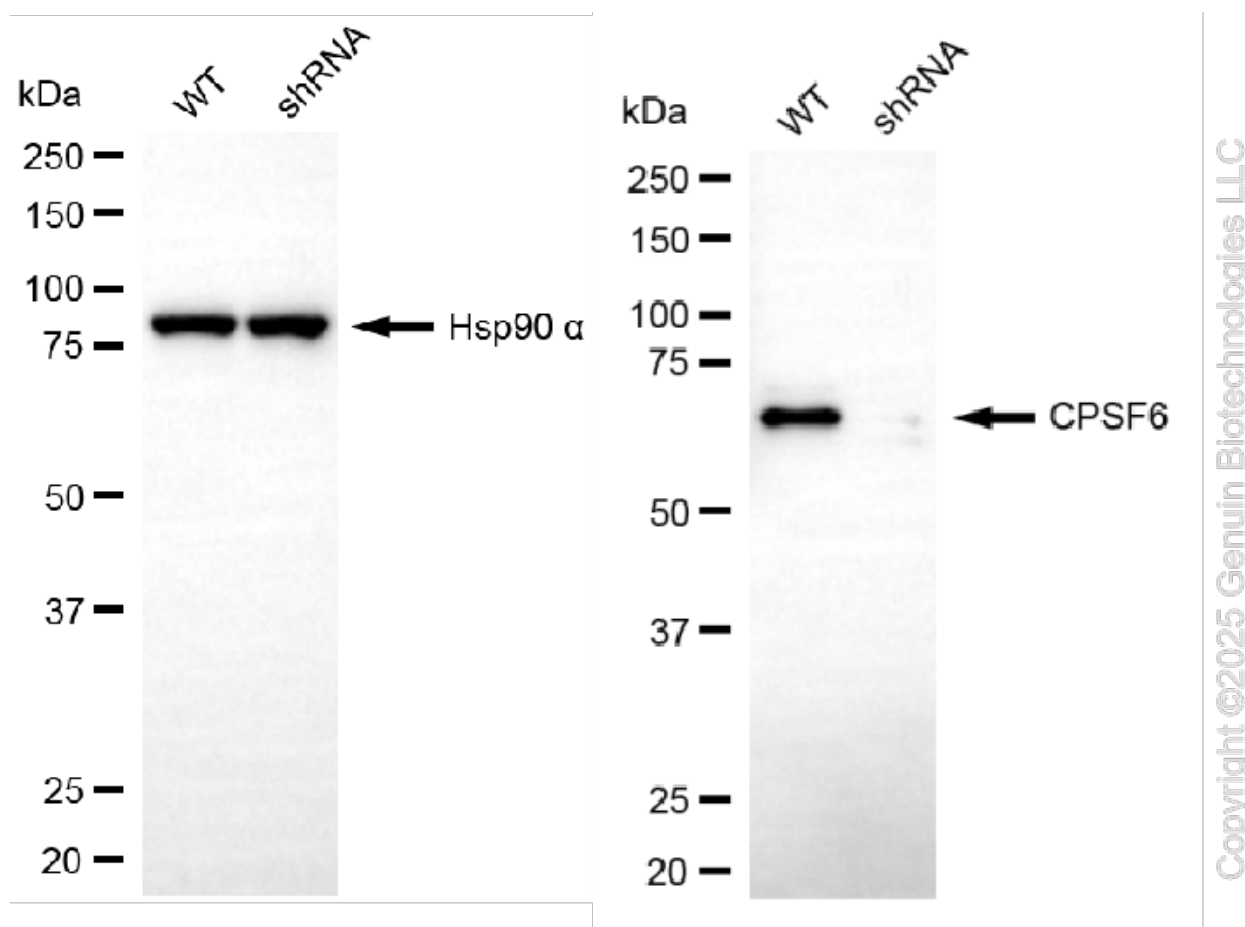


Immunocytochemical staining of HepG2 cells with anti-CPSF6 antibody (Cat#65204, 1:1,000). Nuclei were stained blue with DAPI; CPSF6 was stained magenta with Alexa Fluor® 647. Images were taken using Leica stellaris 5. Protein abundance based on laser Intensity and smart gain: Medium. Scale bar, 20 μ m.



Copyright ©2025 Genuin Biotechnologies LLC

Western blotting analysis using anti-CPSF6 antibody (Cat#65204). Total cell lysates (30 μ g) from various cell lines were loaded and separated by SDS-PAGE. The blot was incubated with anti-CPSF6 antibody (Cat#65204, 1:5,000) and HRP-conjugated goat anti-rabbit secondary antibody (Cat#201, 1:20,000) respectively. Image was developed using NaQ™ ECL Substrate Kit (Cat#716).



Western blotting analysis using anti-CPSF6 antibody (Cat#65204). CPSF6 expression in wild-type (WT) and CPSF6 shRNA knockdown (KD) HeLa cells with 20 µg of total cell lysates. Hsp90 α serves as a loading control. The blot was incubated with anti-CPSF6 antibody (Cat#65204, 1:5,000) and HRP-conjugated goat anti-rabbit secondary antibody (Cat#201, 1:20,000) respectively. Image was developed using FeQ™ ECL Substrate Kit (Cat#226).