

KD-Validated Anti-Cyclin T1 Rabbit Monoclonal Antibody



Catalog #: 65205

Aliases

CCNT1; Cyclin T1; CYCT1; CCNT; Human Immunodeficiency Virus Type 1 (HIV-1) Expression (Elevated); Cyclin-T1; HIVE1; CDK9-Associated C-Type Protein; Cyclin C-Related Protein; MLLT10/CCNT1 Fusion; Cyclin-T; CycT1

Background

Gene Name: CCNT1

NCBI Gene Entry: [904](#)

UniProt Entry: [O60563](#)

Application Information

Molecular Weight: Predicted, 81 kDa; observed, 75 kDa

Clonality: Rabbit monoclonal antibody

Clone ID: 25GB150

Species Reactivity: Human, mouse, rat

Applications Tested: Western blotting (WB), flow cytometry (FCM), immunocytochemistry (IC)

Immunogen

Recombinant protein of human Cyclin T1

Isotype

Rabbit IgG

Storage Buffer

Supplied in PBS (pH 7.4) containing 50% glycerol, and 0.02% sodium azide.

Storage

Store at -20 °C for one year.

Recommended Dilutions

Western Blotting (WB): 1:1,000-1:5,000

Flow Cytometry (FCM): 1:1,000

Immunocytochemistry (IC): 1:100-1:1,000

Note: This product is for research use only.

SUPPORT

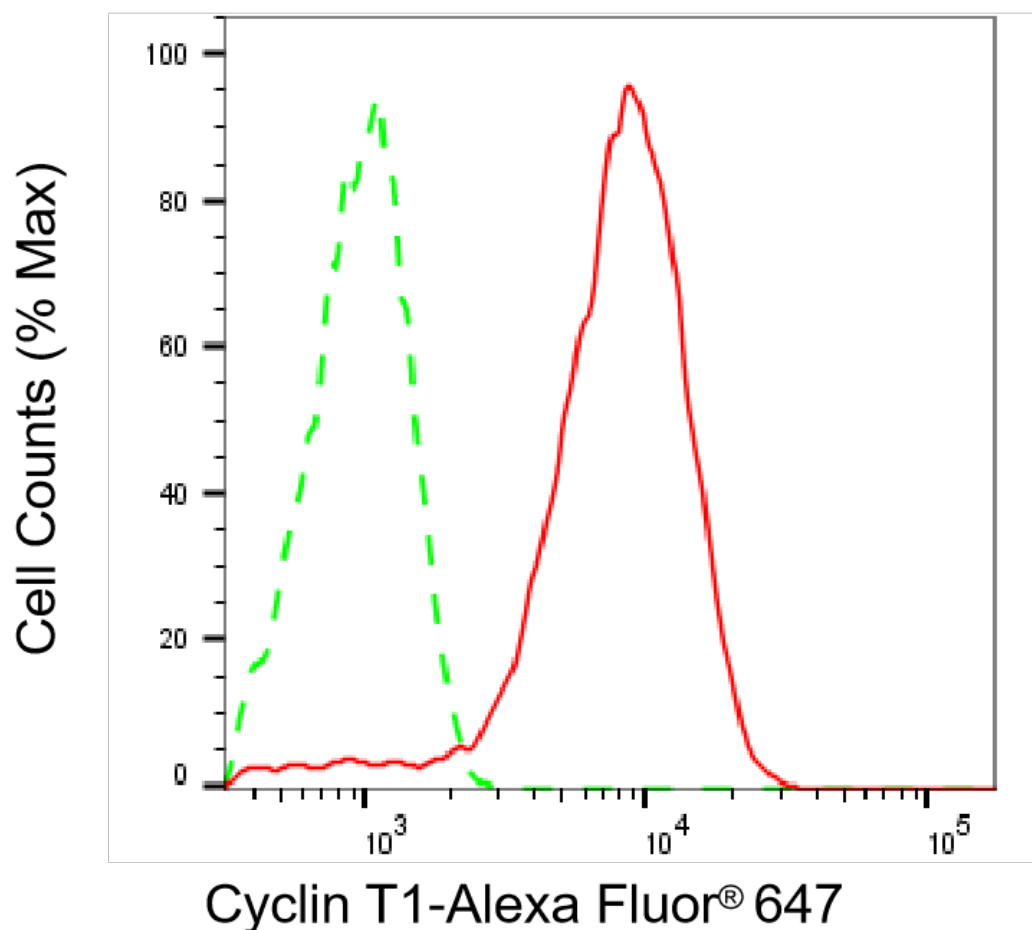
SUPPORT@GENUINBIOTECH.COM
TEL: +1-540-855-7041

ORDERS

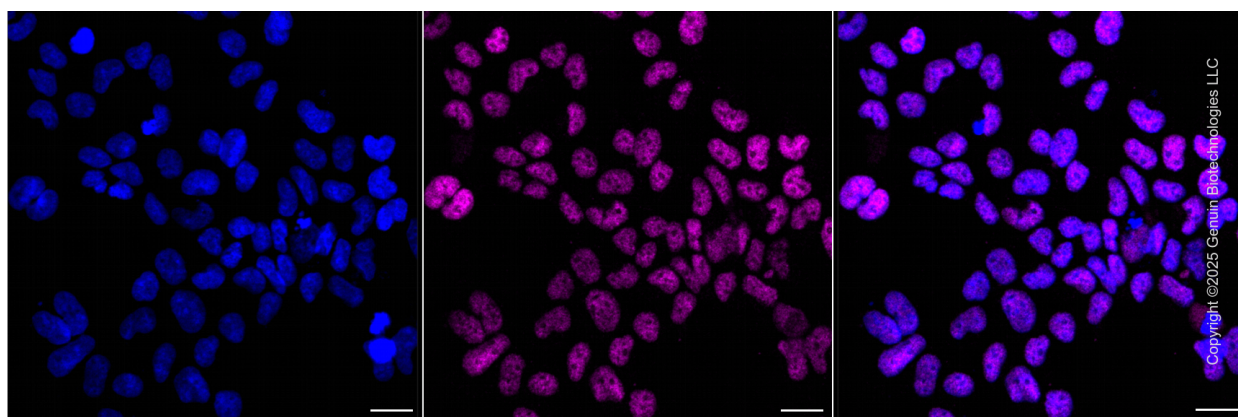
SALES@GENUINBIOTECH.COM
FAX: +1-540-855-7041

WWW.GENUINBIOTECH.COM

Validation Data



Flow cytometric analysis of Cyclin T1 expression in HeLa cells using anti-Cyclin T1 antibody (Cat#65205, 1:2,000). Green, isotype control; red, Cyclin T1.



Immunocytochemical staining of HeLa cells with anti-Cyclin T1 protein antibody (Cat#65205, 1:1,000) . Nuclei were stained blue with DAPI; Cyclin T1 was stained magenta with Alexa Fluor®

SUPPORT

SUPPORT@GENUINBIOTECH.COM
TEL: +1-540-855-7041

ORDERS

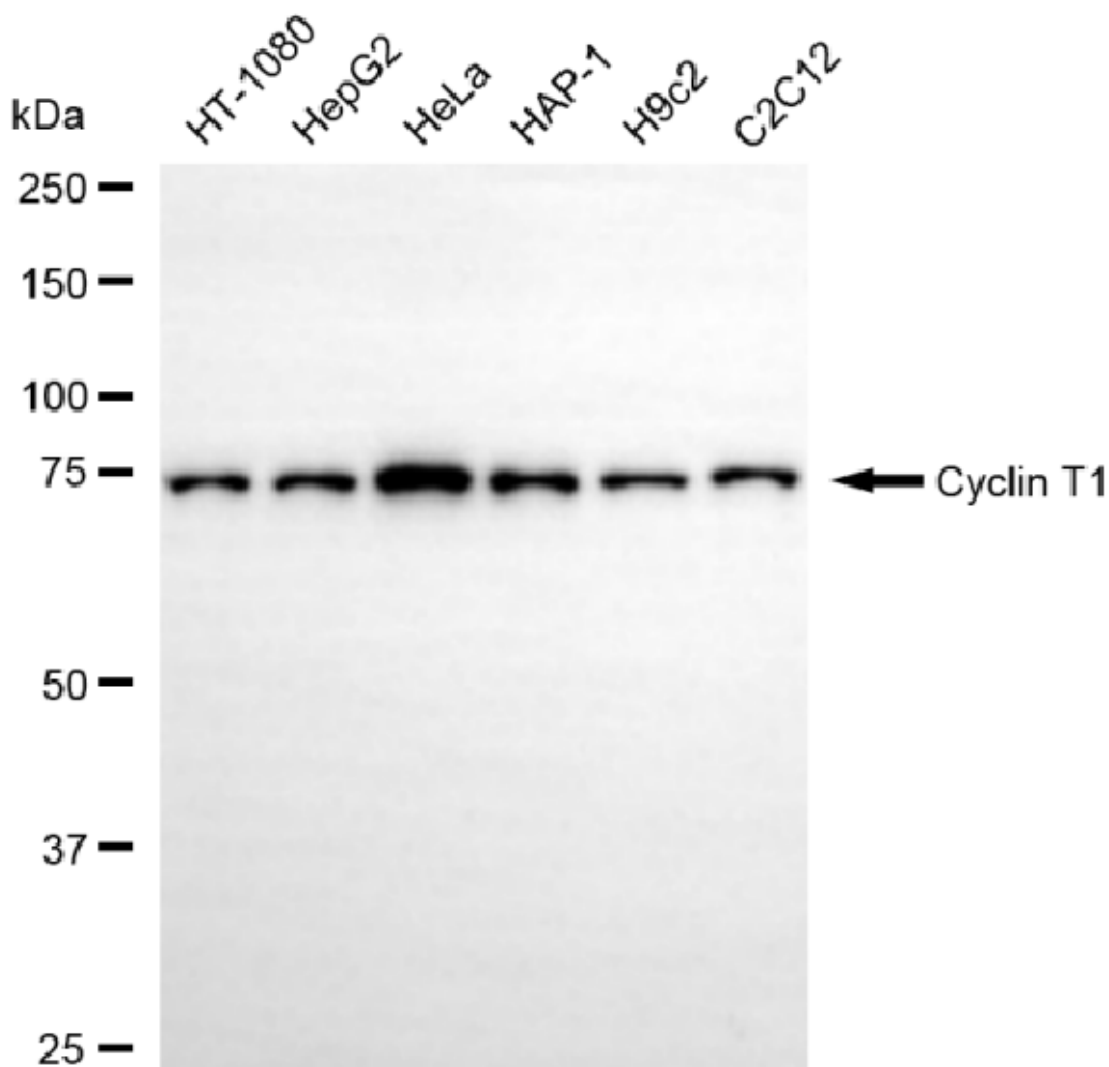
SALES@GENUINBIOTECH.COM
FAX: +1-540-855-7041

WWW.GENUINBIOTECH.COM

KD-Validated Anti-Cyclin T1 Rabbit Monoclonal Antibody

PAGE 3

647. Images were taken using Leica stellaris 5. Protein abundance based on laser Intensity and smart gain: Medium. Scale bar, 20 μ m.



Copyright ©2025 Genuin Biotechnologies LLC

Western blotting analysis using anti-cyclin T1 antibody (Cat#65205). Total cell lysates (30 μ g) from various cell lines were loaded and separated by SDS-PAGE. The blot was incubated with anti-cyclin T1 antibody (Cat#65205, 1:5,000) and HRP-conjugated goat anti-rabbit secondary antibody (Cat#201, 1:20,000) respectively. Image was developed using NaQTM ECL Substrate Kit (Cat#716).

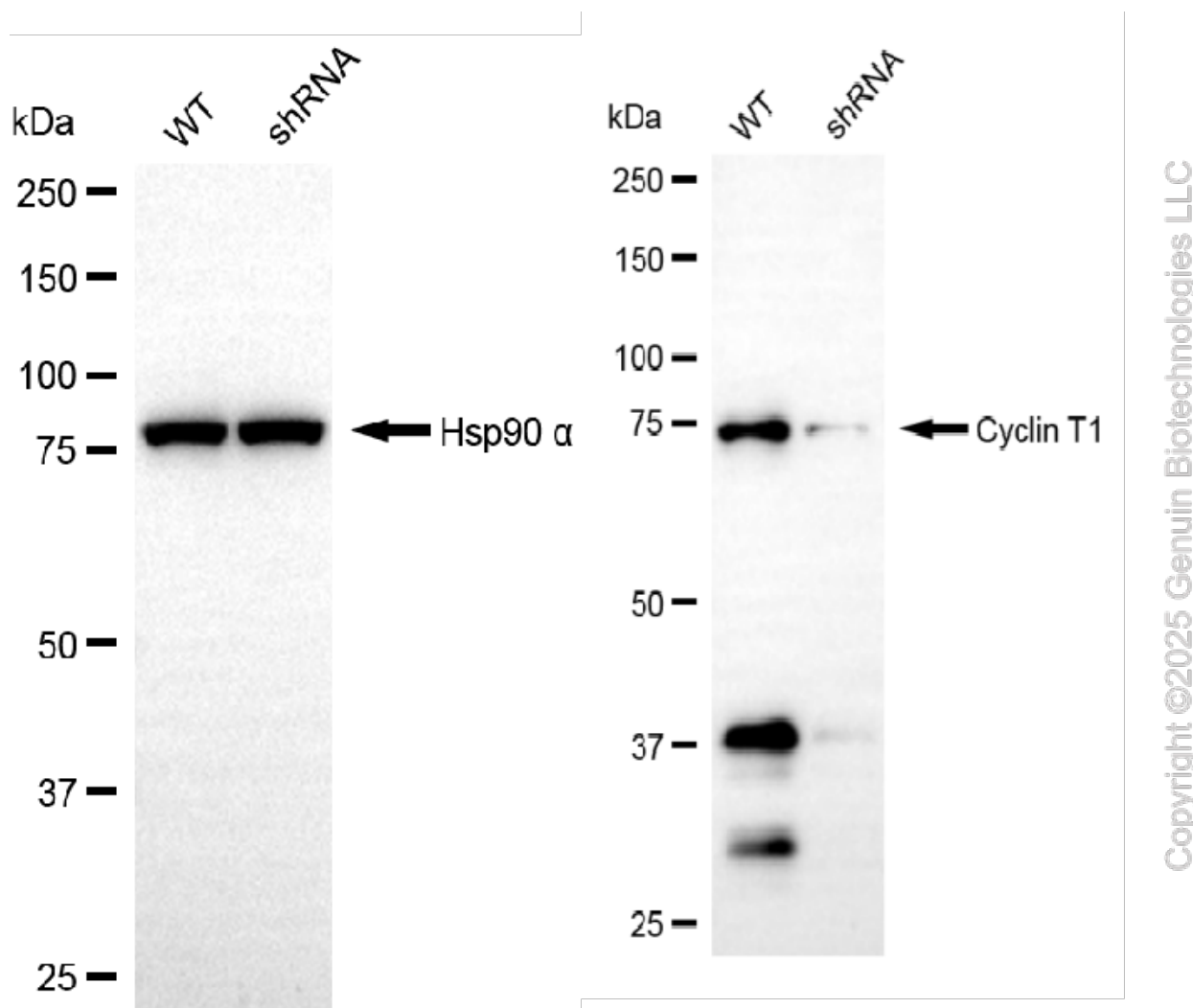
SUPPORT

SUPPORT@GENUINBIOTECH.COM
TEL: +1-540-855-7041

ORDERS

SALES@GENUINBIOTECH.COM
FAX: +1-540-855-7041

WWW.GENUINBIOTECH.COM



Western blotting analysis using anti-cyclin T1 antibody (Cat#65205). Cyclin T1 expression in wild-type (WT) and cyclin T1 (CCNT1) shRNA knockdown (KD) HT-1080 cells with 20 μ g of total cell lysates. Hsp90 α serves as a loading control. The blot was incubated with anti-cyclin T1 antibody (Cat#65205, 1:5,000) and HRP-conjugated goat anti-rabbit secondary antibody (Cat#201, 1:20,000) respectively. Image was developed using NaQTM ECL Substrate Kit (Cat#716).