

KD-Validated Anti-KDM2A Rabbit Monoclonal Antibody



Catalog #: 65207

Aliases

KDM2A; Lysine Demethylase 2A; JHDM1A; FBL11; CXXC8; FBL7; F-Box And Leucine-Rich Repeat Protein 11; KIAA1004; LILINA; FBXL11; JmjC Domain-Containing Histone Demethylation Protein 1A; Jumonji C Domain-Containing Histone Demethylase 1A; [Histone-H3]-Lysine-36 Demethylase 1A; Lysine (K)-Specific Demethylase 2A; CXXC-Type Zinc Finger Protein 8; Lysine-Specific Demethylase 2A; F-Box/LRR-Repeat Protein 11; DKFZP434M1735; EC 1.14.11.27; FLJ00115; F-Box Protein Lilina; F-Box Protein FBL11; F-Box Protein FBL7

Background

Gene Name: KDM2A

NCBI Gene Entry: [22992](#)

UniProt Entry: [Q9Y2K7](#)

Application Information

Molecular Weight: Predicted, 133 kDa; observed, 133 kDa

Clonality: Rabbit monoclonal antibody

Clone ID: 25GB160

Species Reactivity: Human, mouse, rat

Applications Tested: Western blotting (WB), flow cytometry (FCM), immunocytochemistry (IC)

Immunogen

A synthesized peptide derived from human FBXL11

Isotype

Rabbit IgG

Storage Buffer

Supplied in PBS (pH 7.4) containing 50% glycerol, and 0.02% sodium azide.

Storage

Store at -20 °C for one year.

Recommended Dilutions

Western Blotting (WB): 1:1,000-1:5,000

Flow Cytometry (FCM): 1:1,000

Immunocytochemistry (IC): 1:100-1:1,000

SUPPORT

SUPPORT@GENUINBIOTECH.COM
TEL: +1-540-855-7041

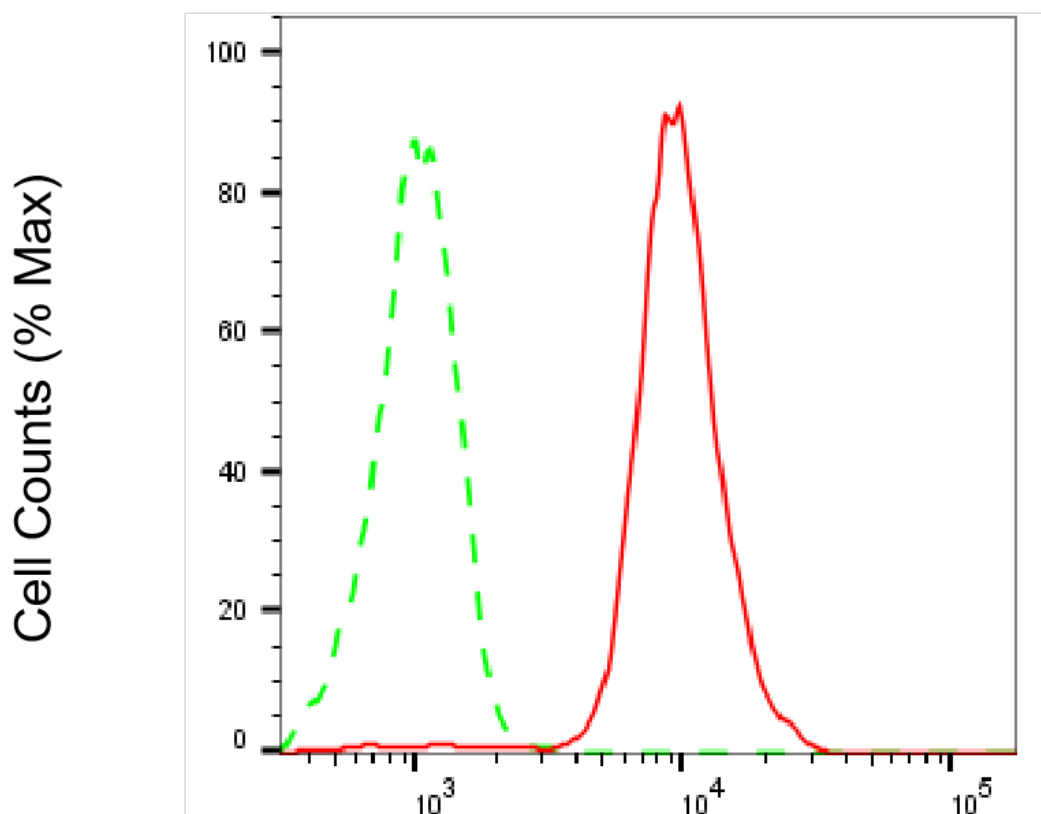
ORDERS

SALES@GENUINBIOTECH.COM
FAX: +1-540-855-7041

WWW.GENUINBIOTECH.COM

Note: This product is for research use only.

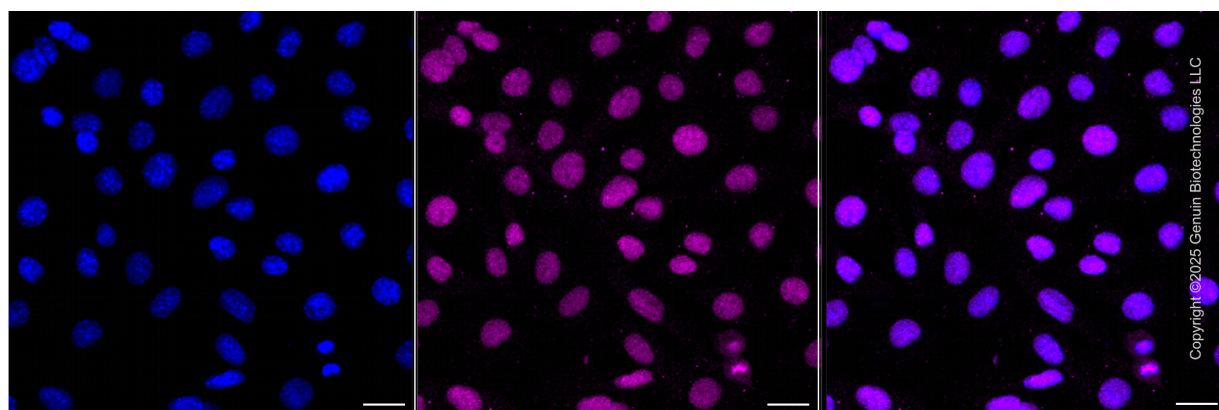
Validation Data



Copyright ©2025 Genuin Biotechnologies LLC

Lysine demethylase 2A-Alexa Fluor® 647

Flow cytometric analysis of Lysine demethylase 2A expression in C2C12 cells using anti-Lysine demethylase 2A antibody (Cat#65207, 1:2,000). Green, isotype control; red, Lysine demethylase 2A.



Copyright ©2025 Genuin Biotechnologies LLC

SUPPORT

SUPPORT@GENUINBIOTECH.COM
TEL: +1-540-855-7041

ORDERS

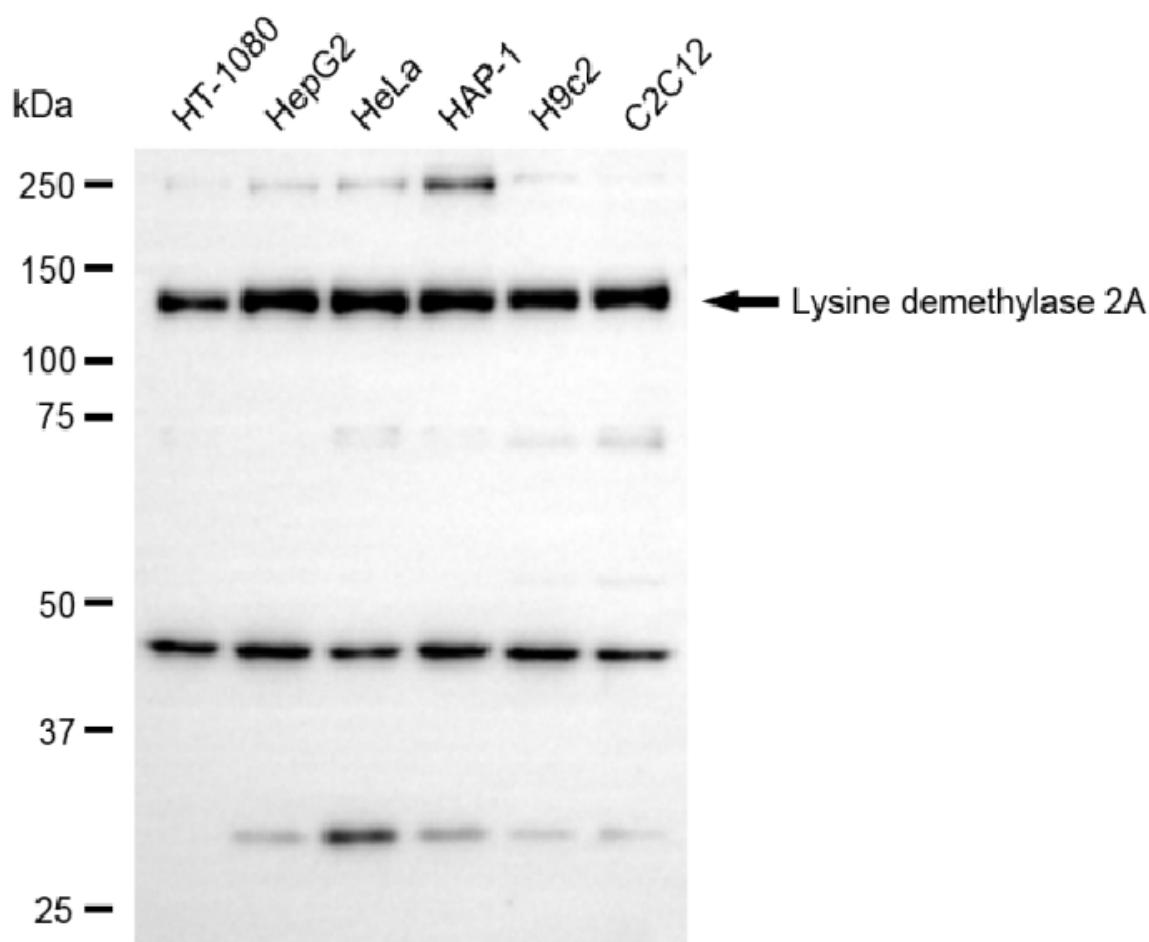
SALES@GENUINBIOTECH.COM
FAX: +1-540-855-7041

WWW.GENUINBIOTECH.COM

KD-Validated Anti-KDM2A Rabbit Monoclonal Antibody

PAGE 3

Immunocytochemical staining of C2C12 cells with anti-Lysine demethylase 2A antibody (Cat#65207, 1:1,000). Nuclei were stained blue with DAPI; Lysine demethylase 2A was stained magenta with Alexa Fluor® 647. Images were taken using Leica stellaris 5. Protein abundance based on laser Intensity and smart gain: Medium. Scale bar, 20 μ m.



Copyright ©2025 Genuin Biotechnologies LLC

Western blotting analysis using anti-lysine demethylase 2A antibody (Cat#65207). Total cell lysates (30 μ g) from various cell lines were loaded and separated by SDS-PAGE. The blot was incubated with anti-lysine demethylase 2A antibody (Cat#65207, 1:5,000) and HRP-conjugated goat anti-rabbit secondary antibody (Cat#201, 1:20,000) respectively. Image was developed using NaQ™ ECL Substrate Kit (Cat#716).

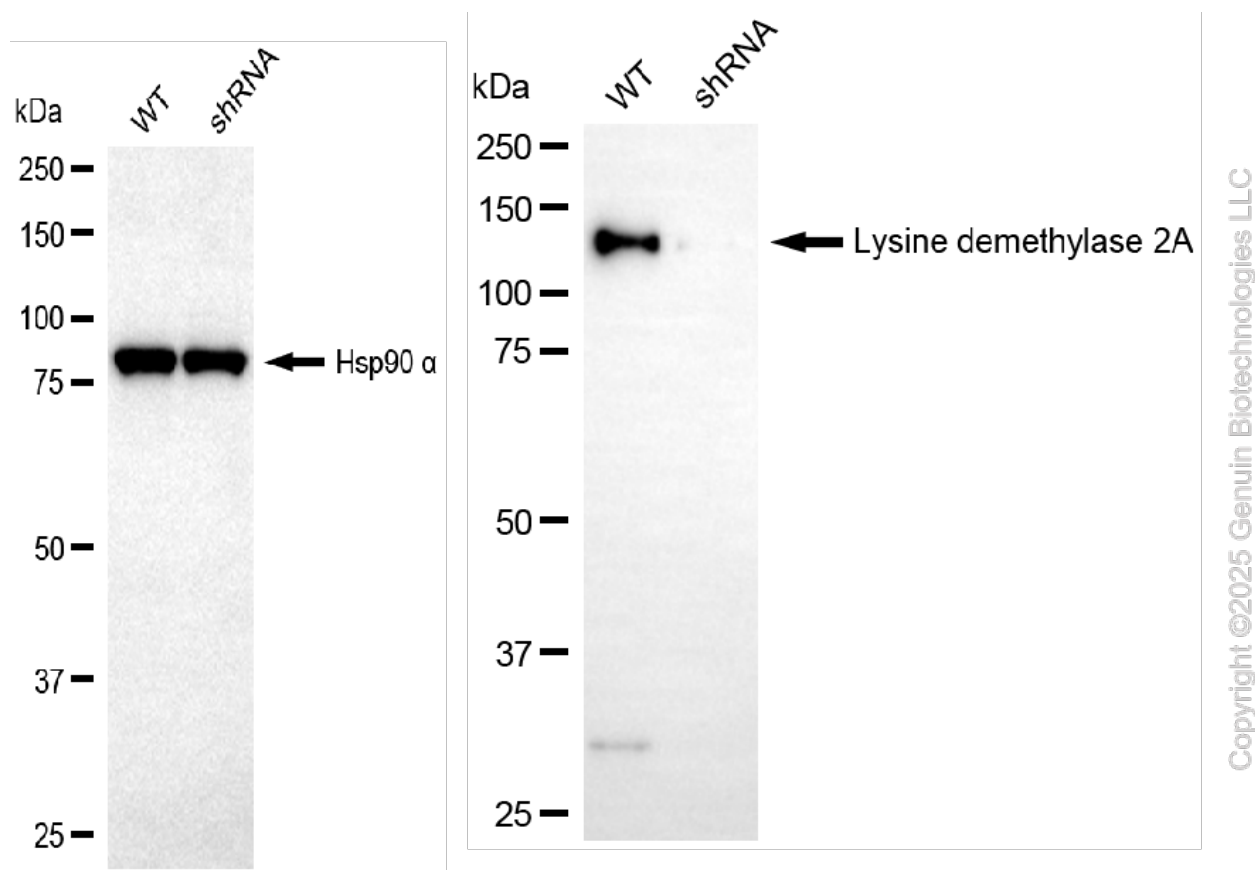
SUPPORT

SUPPORT@GENUINBIOTECH.COM
TEL: +1-540-855-7041

ORDERS

SALES@GENUINBIOTECH.COM
FAX: +1-540-855-7041

WWW.GENUINBIOTECH.COM



Western blotting analysis using anti-lysine demethylase 2A antibody (Cat#65207). lysine demethylase 2A expression in wild-type (WT) and lysine demethylase 2A (KDM2A) shRNA knockdown (KD) HeLa cells with 20 µg of total cell lysates. Hsp90 α serves as a loading control. The blot was incubated with anti-lysine demethylase 2A antibody (Cat#65207, 1:5,000) and HRP-conjugated goat anti-rabbit secondary antibody (Cat#201, 1:20,000) respectively. Image was developed using NaQ™ ECL Substrate Kit (Cat#716).