

KD-Validated Anti-LPCAT1 Rabbit Monoclonal Antibody



Catalog #: 65211

Aliases

LPCAT1; Lysophosphatidylcholine Acyltransferase 1; AGPAT10; AGPAT9; LPLAT8; AYTL2; Acetyl-CoA:Lyso-Platelet-Activating Factor Acetyltransferase; 1-Alkenylglycerophosphocholine O-Acyltransferase; 1-Alkylglycerophosphocholine O-Acetyltransferase; 1-Acylglycerophosphocholine O-Acyltransferase; 1-Acylglycerol-3-Phosphate O-Acyltransferase; Phosphonoformate Immuno-Associated Protein 3; Acetyl-CoA:Lyso-PAF Acetyltransferase; Lysophospholipid Acyltransferase 8; Lyso-PAF Acetyltransferase; LysoPC Acyltransferase 1; Acyltransferase-Like; LPC Acyltransferase 1; LysoPAFAT; FLJ12443; LPCAT-1; PFAAP3; Acyltransferase Like 2; EC 2.3.1.23; EC 2.3.1.51; EC 2.3.1.25; EC 2.3.1.67; Lpcat

Background

Gene Name: LPCAT1

NCBI Gene Entry: [79888](#)

UniProt Entry: [Q8NF37](#)

Application Information

Molecular Weight: Predicted, 59 kDa; observed, 55 kDa

Clonality: Rabbit monoclonal antibody

Clone ID: 25GB180

Species Reactivity: Human

Applications Tested: Western blotting (WB), flow cytometry (FCM), immunocytochemistry (IC)

Immunogen

Recombinant protein of human LPCAT1

Isotype

Rabbit IgG

Storage Buffer

Supplied in PBS (pH 7.4) containing 50% glycerol, and 0.02% sodium azide.

Storage

Store at -20 °C for one year.

Recommended Dilutions

Western Blotting (WB): 1:1,000-1:5,000

SUPPORT

SUPPORT@GENUINBIOTECH.COM
TEL: +1-540-855-7041

ORDERS

SALES@GENUINBIOTECH.COM
FAX: +1-540-855-7041

WWW.GENUINBIOTECH.COM

KD-Validated Anti-LPCAT1 Rabbit Monoclonal Antibody

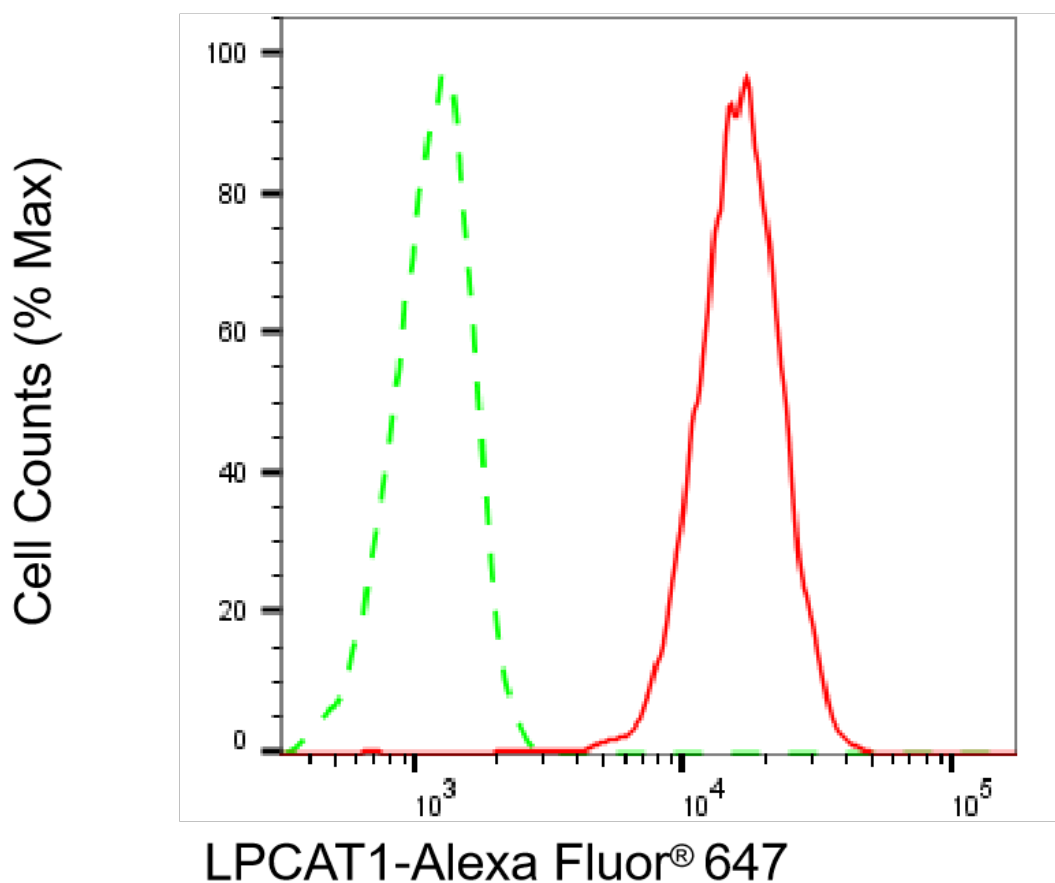
PAGE 2

Flow Cytometry (FCM): 1:1,000

Immunocytochemistry (IC): 1:100-1:1,000

Note: This product is for research use only.

Validation Data



Flow cytometric analysis of LPCAT1 expression in HepG2 cells using anti-LPCAT1 antibody (Cat#65211, 1:2,000). Green, isotype control; red, LPCAT1.

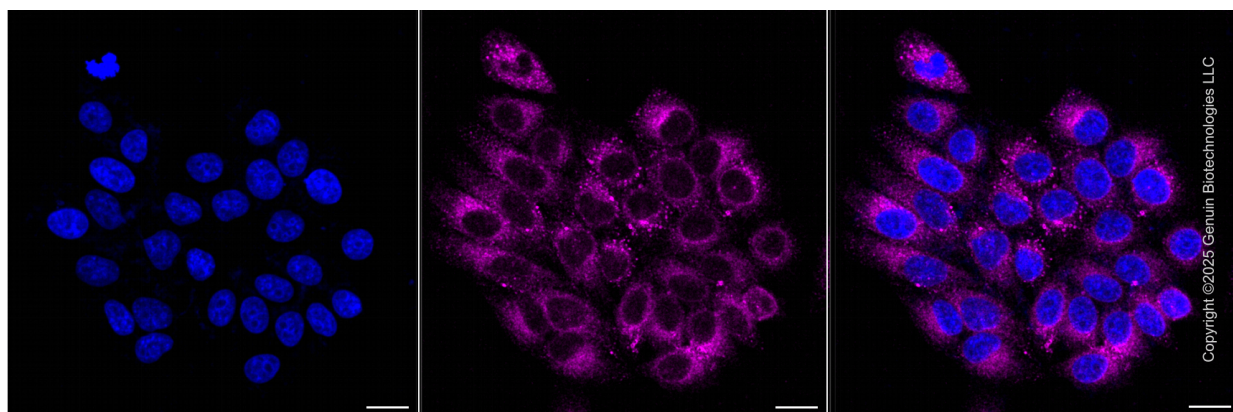
SUPPORT

SUPPORT@GENUINBIOTECH.COM
TEL: +1-540-855-7041

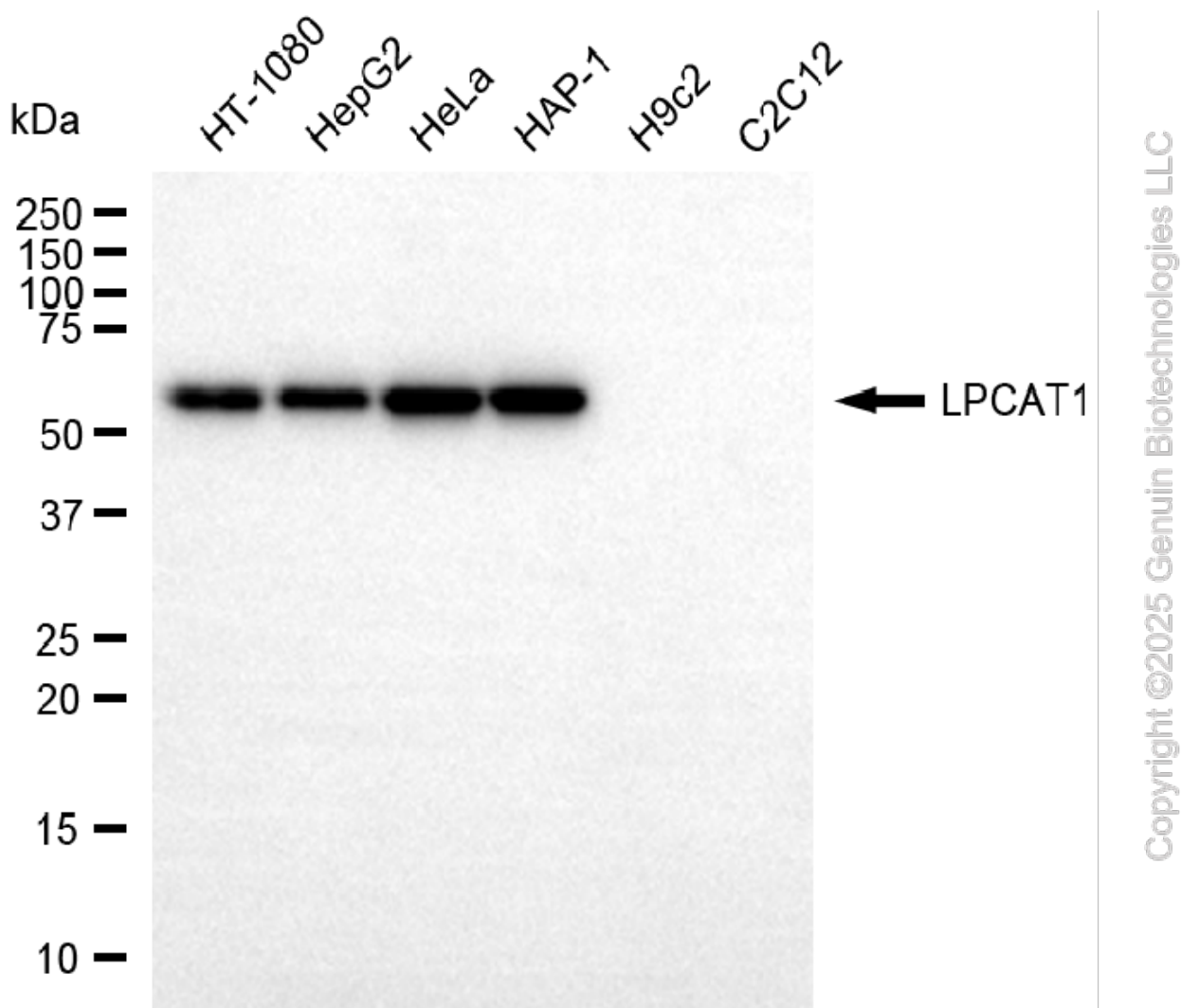
ORDERS

SALES@GENUINBIOTECH.COM
FAX: +1-540-855-7041

WWW.GENUINBIOTECH.COM



Immunocytochemical staining of HepG2 cells with anti-LPCAT1 antibody (Cat#65211, 1:1,000) . Nuclei were stained blue with DAPI; LPCAT1 was stained magenta with Alexa Fluor® 647. Images were taken using Leica stellaris 5. Protein abundance based on laser Intensity and smart gain: Medium. Scale bar, 20 μ m.



Western blotting analysis using anti-LPCAT1 antibody (Cat#65211). Total cell lysates (30 μ g)

SUPPORT

SUPPORT@GENUINBIOTECH.COM
TEL: +1-540-855-7041

ORDERS

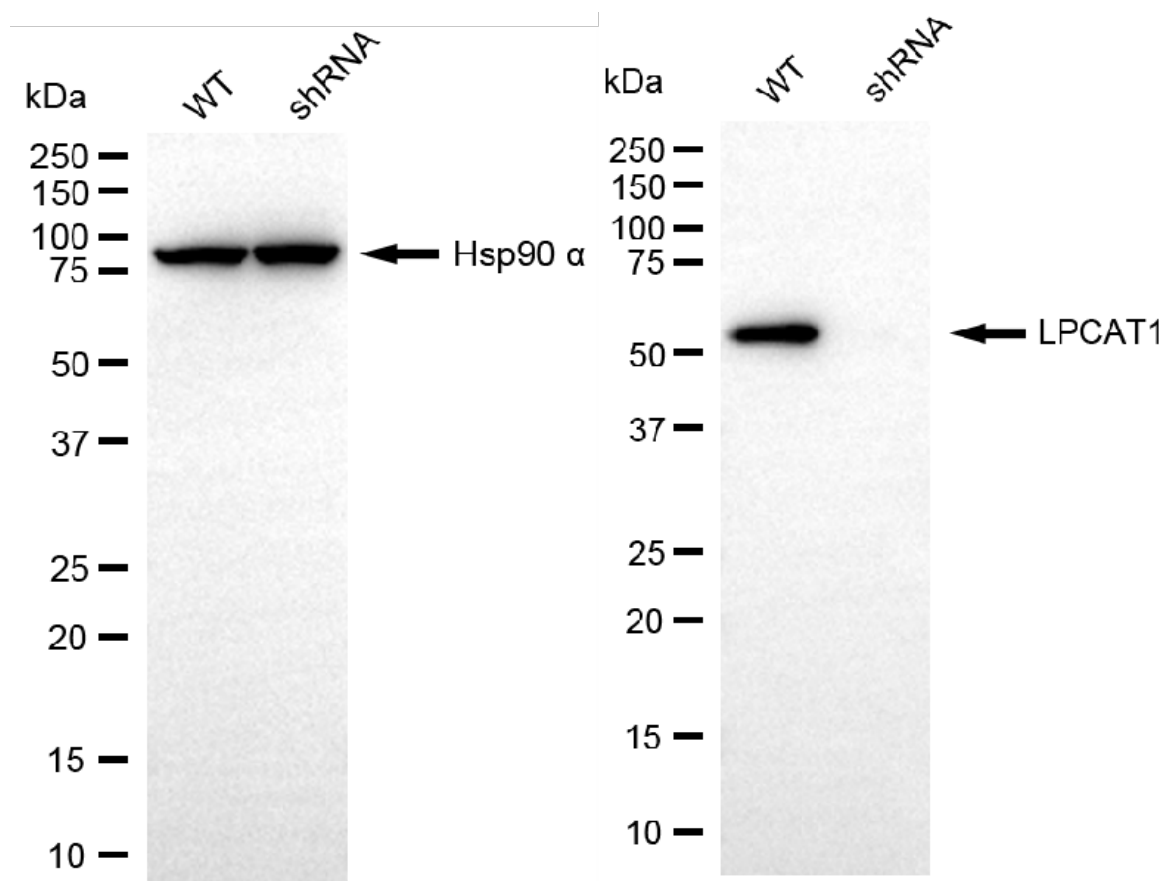
SALES@GENUINBIOTECH.COM
FAX: +1-540-855-7041

WWW.GENUINBIOTECH.COM

KD-Validated Anti-LPCAT1 Rabbit Monoclonal Antibody

PAGE 4

from various cell lines were loaded and separated by SDS-PAGE. The blot was incubated with anti-LPCAT1 antibody (Cat#65211, 1:5,000) and HRP-conjugated goat anti-rabbit secondary antibody (Cat#201, 1:20,000) respectively. Image was developed using FeQ™ ECL Substrate Kit (Cat#226).



Copyright ©2025 Genuin Biotechnologies LLC

Western blotting analysis using anti-LPCAT1 antibody (Cat#65211). LPCAT1 expression in wild-type (WT) and LPCAT1 shRNA knockdown (KD) HeLa cells with 20 µg of total cell lysates. Hsp90 α serves as a loading control. The blot was incubated with anti-LPCAT1 antibody (Cat#65211, 1:5,000) and HRP-conjugated goat anti-rabbit secondary antibody (Cat#201, 1:20,000) respectively. Image was developed using NaQ™ ECL Substrate Kit (Cat#716).

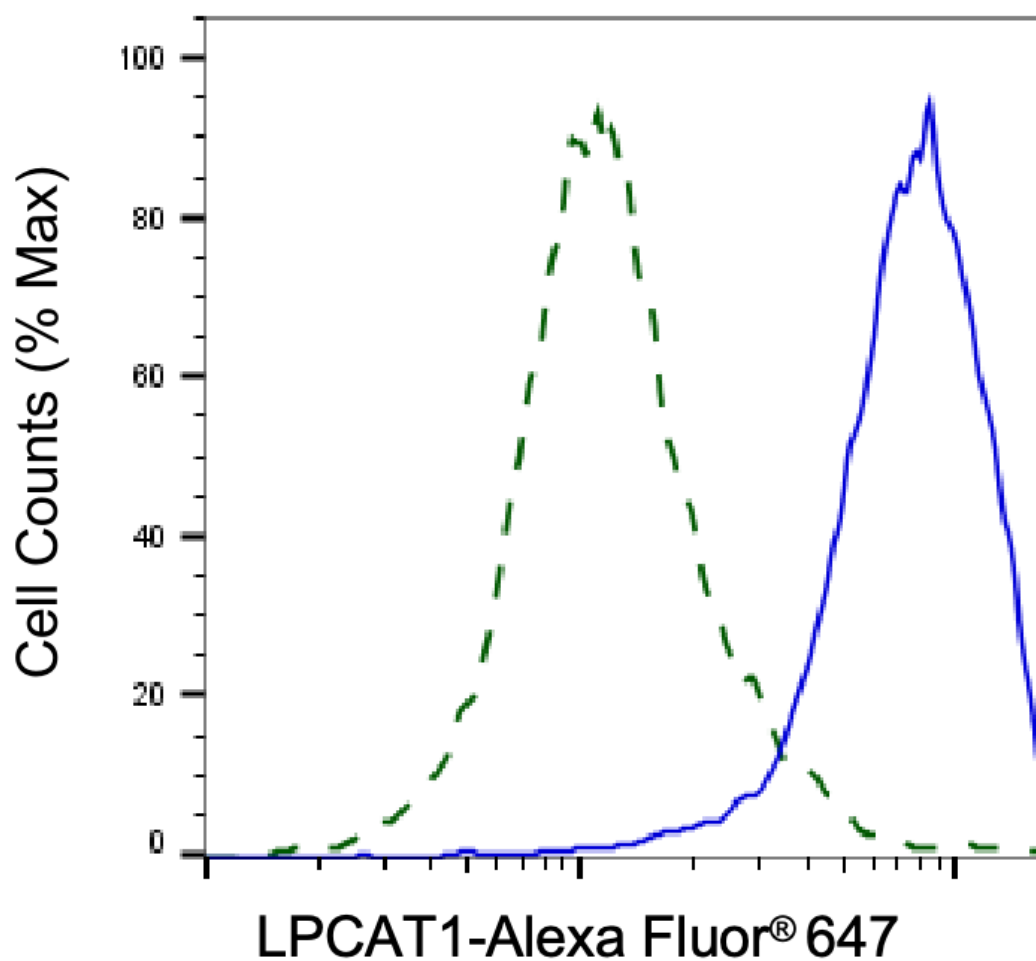
SUPPORT

SUPPORT@GENUINBIOTECH.COM
TEL: +1-540-855-7041

ORDERS

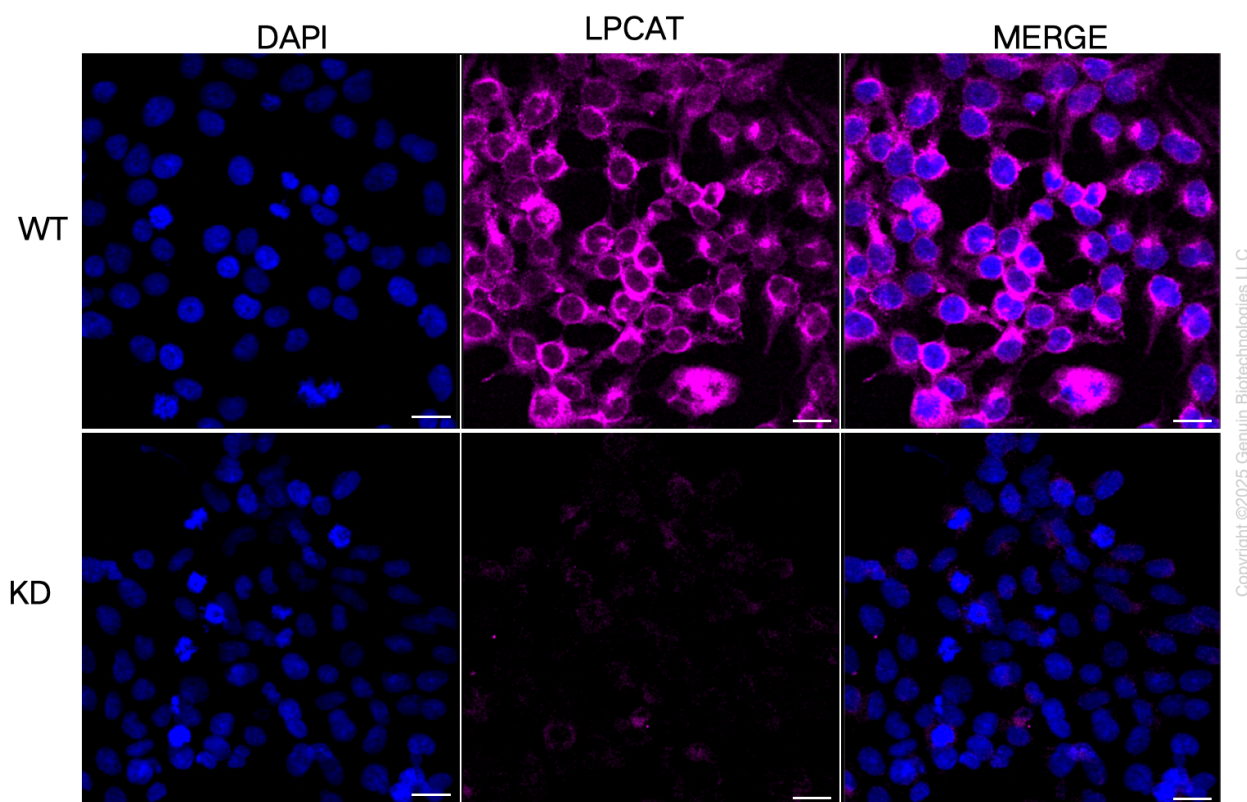
SALES@GENUINBIOTECH.COM
FAX: +1-540-855-7041

WWW.GENUINBIOTECH.COM



Copyright ©2025 Genuin Biotechnologies LLC

Validation of LPCAT1 knockdown using flow cytometry. Wild-type(WT, Blue) and knockdown(KD, Green) HeLa cells were stained with anti-LPCAT1 antibody (Cat#65211, 1:2,000) and analyzed using BD flow cytometer.



Immunocytochemical staining of HeLa cells using anti-LPCAT1 antibody (Cat#65211, 1:1,000), Top panel: wild-type (WT); Bottom panel: LPCAT1 shRNA knockdown (KD). Nuclei were stained blue with DAPI; LPCAT1 was stained magenta with Alexa Fluor® 647. Scale bar, 20 μ m.