

KD-Validated Anti-MARS1 Rabbit Monoclonal Antibody



Catalog #: 65212

Aliases

MARS1; Methionyl-TRNA Synthetase 1; MetRS; Methionine--TRNA Ligase, Cytoplasmic; SPG70; CMT2U; MARS; Methionyl-TRNA Synthetase; EC 6.1.1.10; Methionine TRNA Ligase 1, Cytoplasmic; Cytosolic Methionyl-TRNA Synthetase; ILFS2; MTRNS; ILLD; TTD9; MRS

Background

Gene Name: MARS1

NCBI Gene Entry: [4141](#)

UniProt Entry: [P56192](#)

Application Information

Molecular Weight: Predicted, 101 kDa; observed, 95 kDa

Clonality: Rabbit monoclonal antibody

Clone ID: 25GB185

Species Reactivity: Human, rat

Applications Tested: Western blotting (WB), flow cytometry (FCM), immunocytochemistry (IC)

Immunogen

A synthesized peptide derived from human MARS

Isotype

Rabbit IgG

Storage Buffer

Supplied in PBS (pH 7.4) containing 50% glycerol, and 0.02% sodium azide.

Storage

Store at -20 °C for one year.

Recommended Dilutions

Western Blotting (WB): 1:1,000-1:5,000

Flow Cytometry (FCM): 1:2,000

Immunocytochemistry (IC): 1:100-1:1,000

Note: This product is for research use only.

SUPPORT

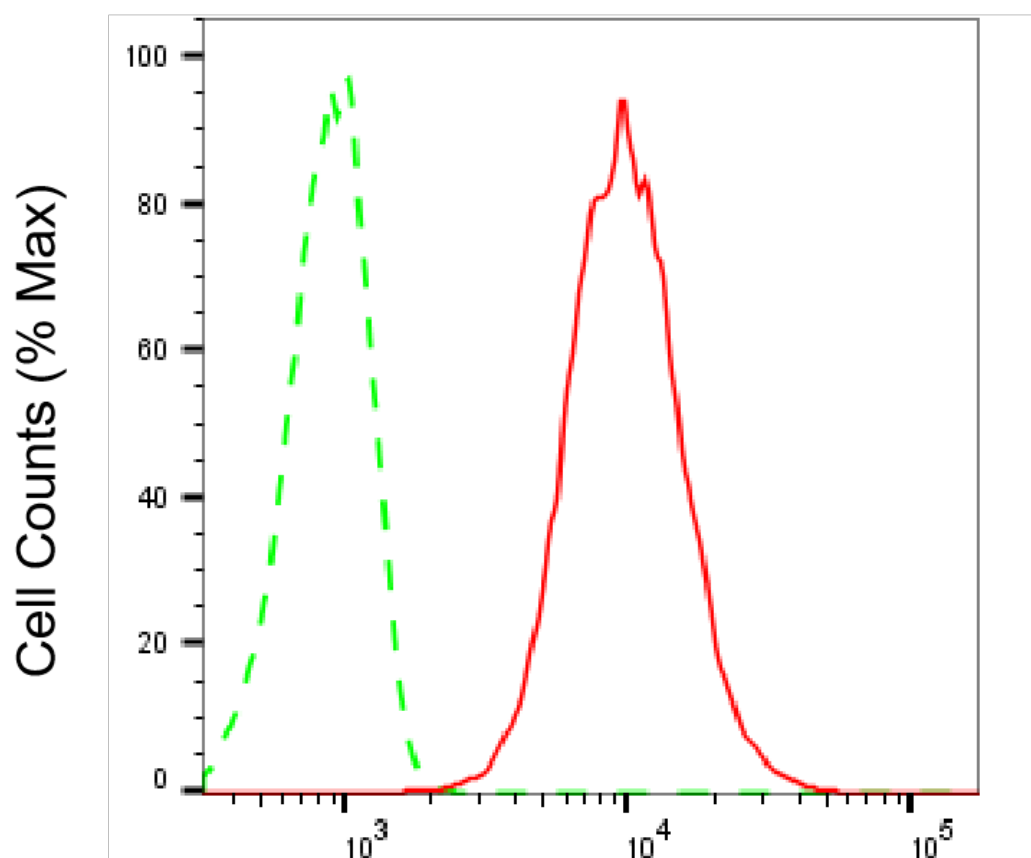
SUPPORT@GENUINBIOTECH.COM
TEL: +1-540-855-7041

ORDERS

SALES@GENUINBIOTECH.COM
FAX: +1-540-855-7041

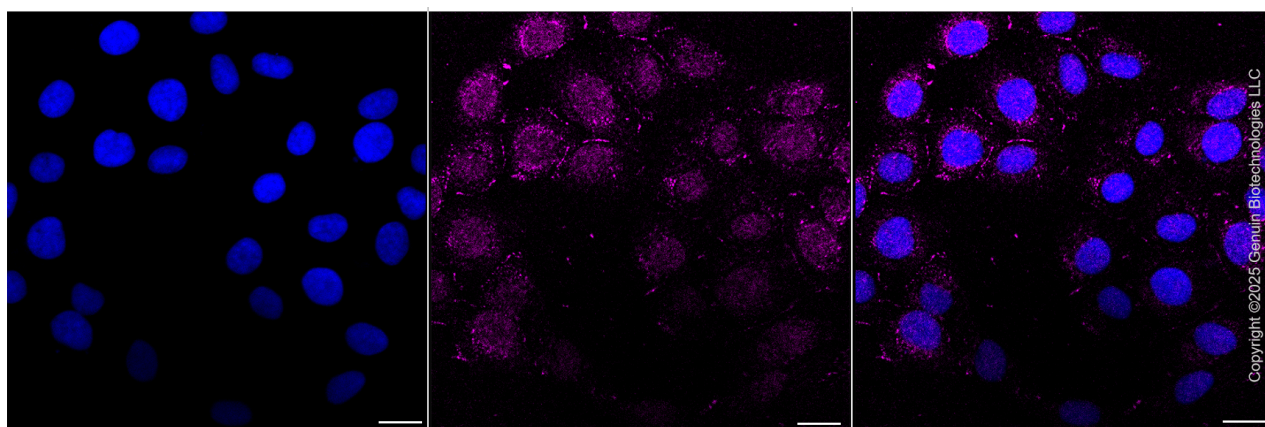
WWW.GENUINBIOTECH.COM

Validation Data



Copyright ©2025 Genuin Biotechnologies LLC

Flow cytometric analysis of MARS1 expression in HT-1080 cells using anti-MARS1 antibody (Cat#65212, 1:2,000). Green, isotype control; red, MARS1.



Copyright ©2025 Genuin Biotechnologies LLC

SUPPORT

SUPPORT@GENUINBIOTECH.COM
TEL: +1-540-855-7041

ORDERS

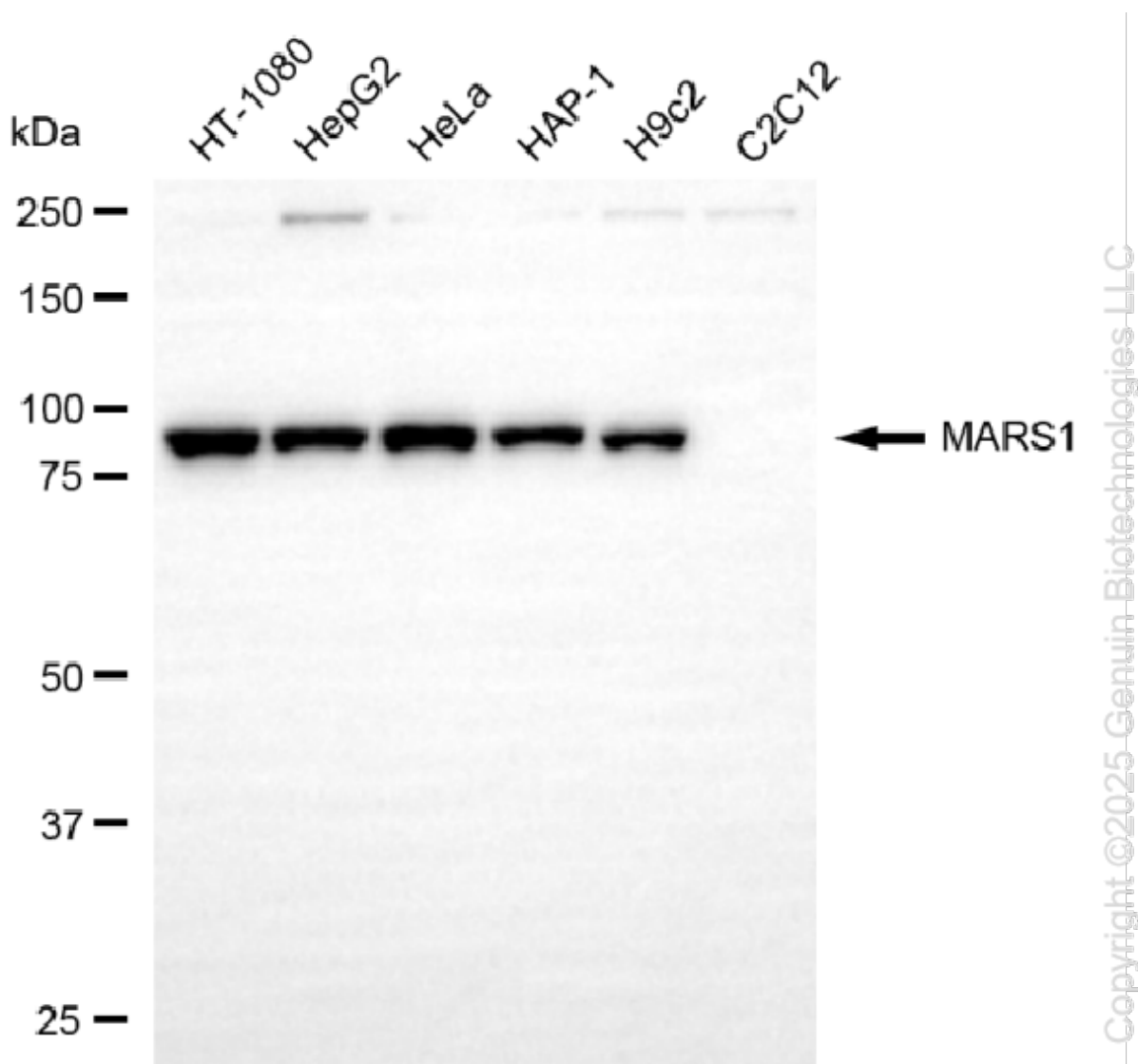
SALES@GENUINBIOTECH.COM
FAX: +1-540-855-7041

WWW.GENUINBIOTECH.COM

KD-Validated Anti-MARS1 Rabbit Monoclonal Antibody

PAGE 3

Images were taken using Leica stellaris 5. Protein abundance based on laser Intensity and smart gain: Medium. Scale bar, 20 μ m.



Western blotting analysis using anti-MARS1 antibody (Cat#65212). Total cell lysates (30 μ g) from various cell lines were loaded and separated by SDS-PAGE. The blot was incubated with anti-MARS1 antibody (Cat#65212, 1:5,000) and HRP-conjugated goat anti-rabbit secondary antibody (Cat#201, 1:20,000) respectively. Image was developed using NaQ™ ECL Substrate Kit (Cat#716).

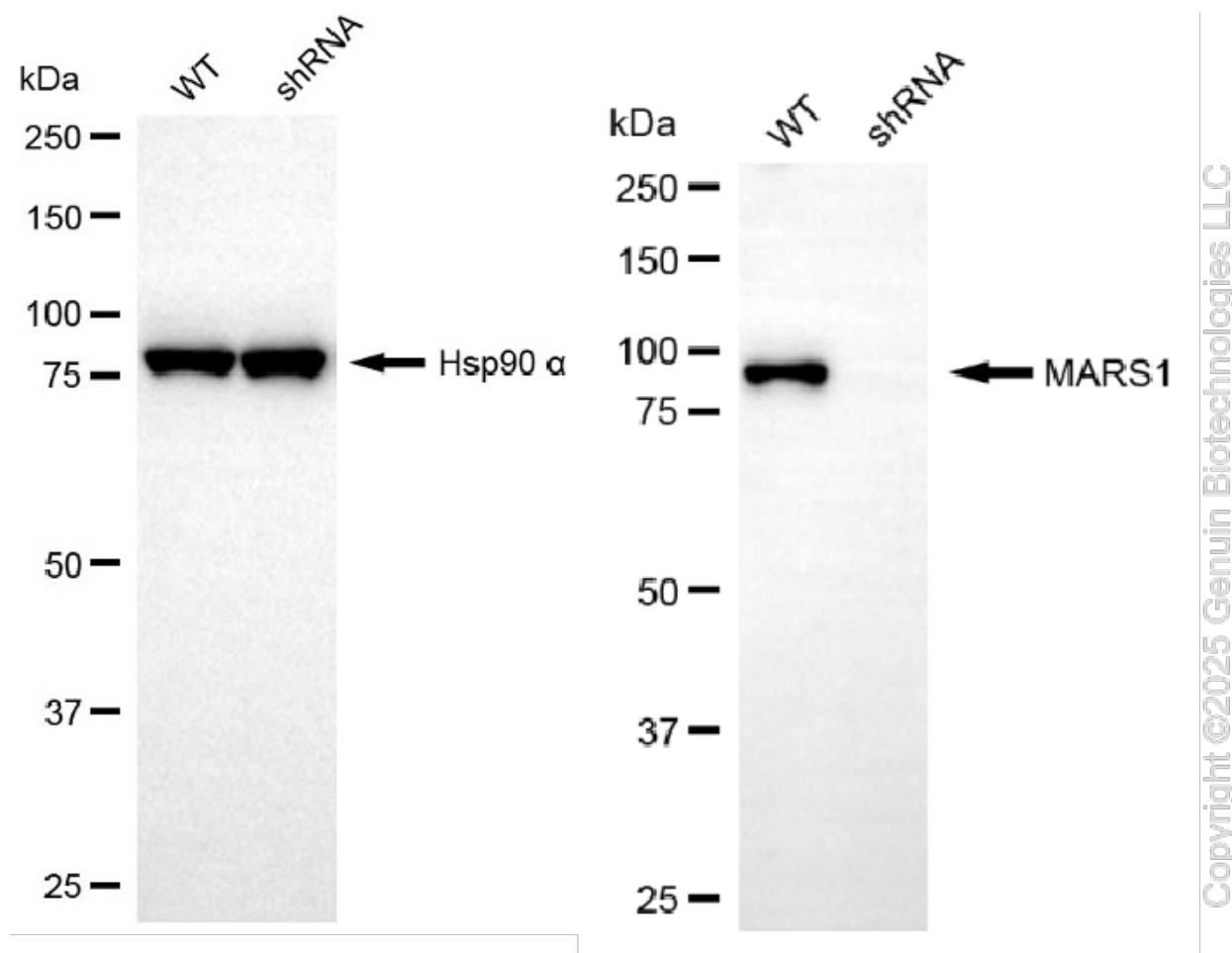
SUPPORT

SUPPORT@GENUINBIOTECH.COM
TEL: +1-540-855-7041

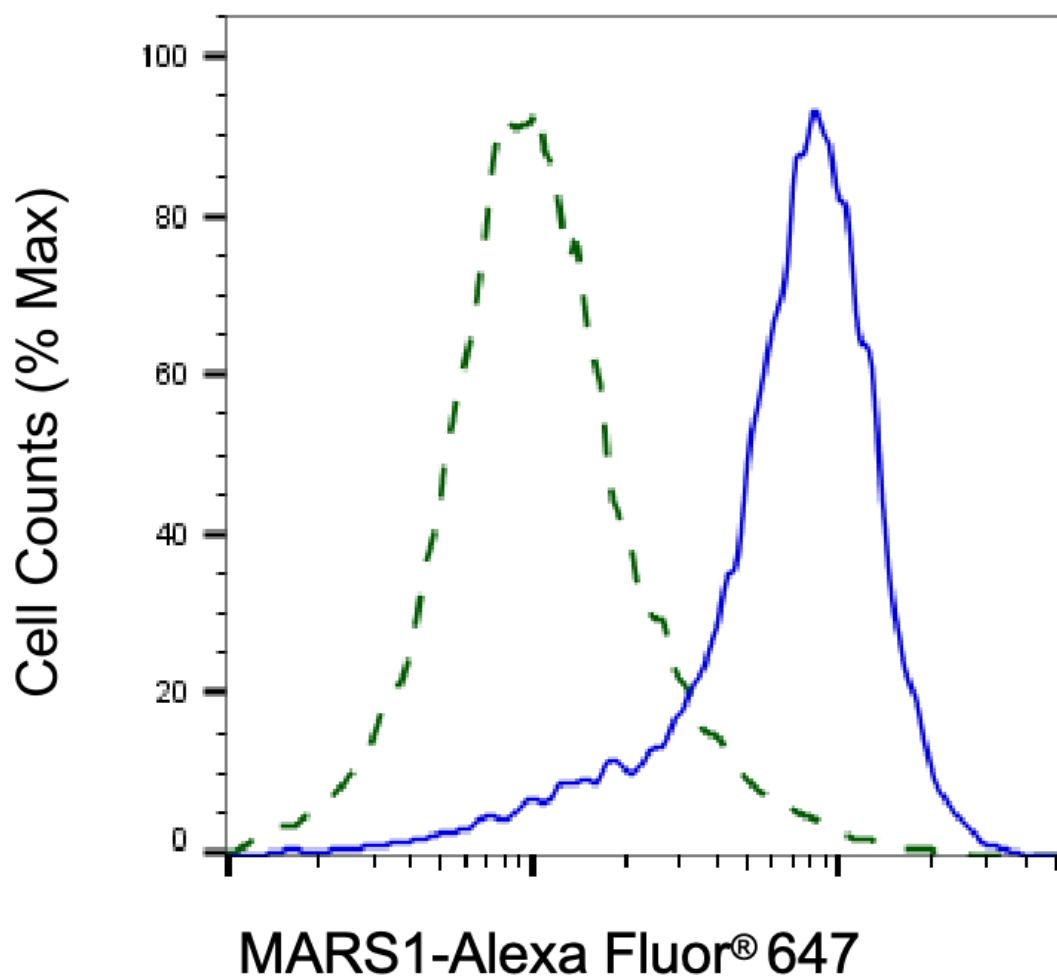
ORDERS

SALES@GENUINBIOTECH.COM
FAX: +1-540-855-7041

WWW.GENUINBIOTECH.COM

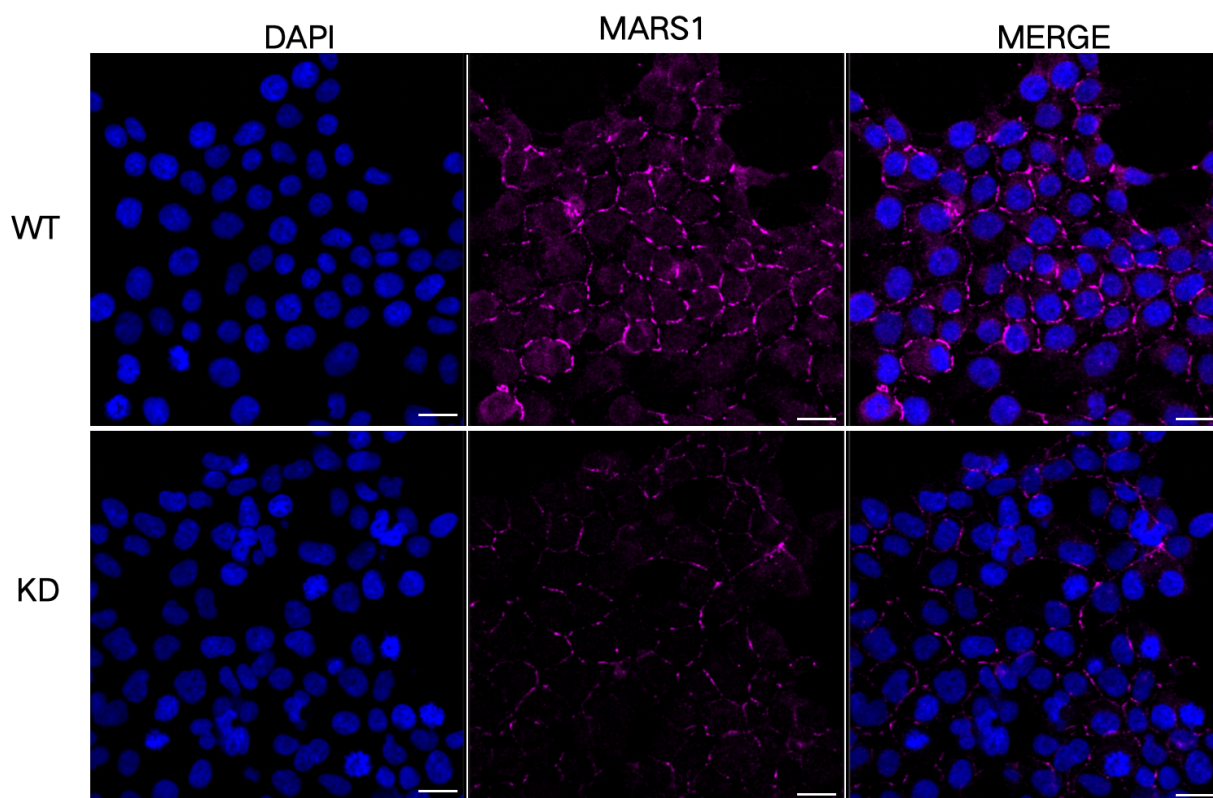


Western blotting analysis using anti-MARS1 antibody (Cat#65212). MARS1 expression in wild-type (WT) and MARS1 shRNA knockdown (KD) HeLa cells with 20 µg of total cell lysates. Hsp90 α serves as a loading control. The blot was incubated with anti-MARS1 antibody (Cat#65212, 1:5,000) and HRP-conjugated goat anti-rabbit secondary antibody (Cat#201, 1:20,000) respectively. Image was developed using NaQ™ ECL Substrate Kit (Cat#716).



Copyright ©2025 Genuin Biotechnologies LLC

Validation of MARS1 knockdown using flow cytometry. Wild-type(WT, Blue) and knockdown(KD, Green) HeLa cells were stained with anti-MARS1 antibody (Cat#65212, 1:2,000) and analyzed using BD flow cytometer.



Immunocytochemical staining of HeLa cells using anti-MARS1 antibody (Cat#65212, 1:1,000), Top panel: wild-type (WT); Bottom panel: MARS1 shRNA knockdown (KD). Nuclei were stained blue with DAPI; MARS1 was stained magenta with Alexa Fluor® 647. Scale bar, 20 μ m.