

# KD-Validated Anti-MTHFR Rabbit Monoclonal Antibody



**Catalog #: 65213**

## Aliases

MTHFR; Methylenetetrahydrofolate Reductase; 5,10-Methylenetetrahydrofolate Reductase (NADPH); Methylenetetrahydrofolate Reductase (NAD(P)H); Methylenetetrahydrofolate Reductase (NADPH); EC 1.5.1.53; EC 1.5.1.20

## Background

Gene Name: MTHFR

NCBI Gene Entry: [4524](#)

UniProt Entry: [P42898](#)

## Application Information

Molecular Weight: Predicted, 75 kDa; observed, 70 kDa

Clonality: Rabbit monoclonal antibody

Clone ID: 25GB190

Species Reactivity: Human, mouse

Applications Tested: Western blotting (WB), flow cytometry (FCM)

## Immunogen

Recombinant protein of human MTHFR

## Isotype

Rabbit IgG

## Storage Buffer

Supplied in PBS (pH 7.4) containing 50% glycerol, and 0.02% sodium azide.

## Storage

Store at -20 °C for one year.

## Recommended Dilutions

Western Blotting (WB): 1:1,000-1:5,000

Flow Cytometry (FCM): 1:1,000

**Note:** This product is for research use only.

## Validation Data

---

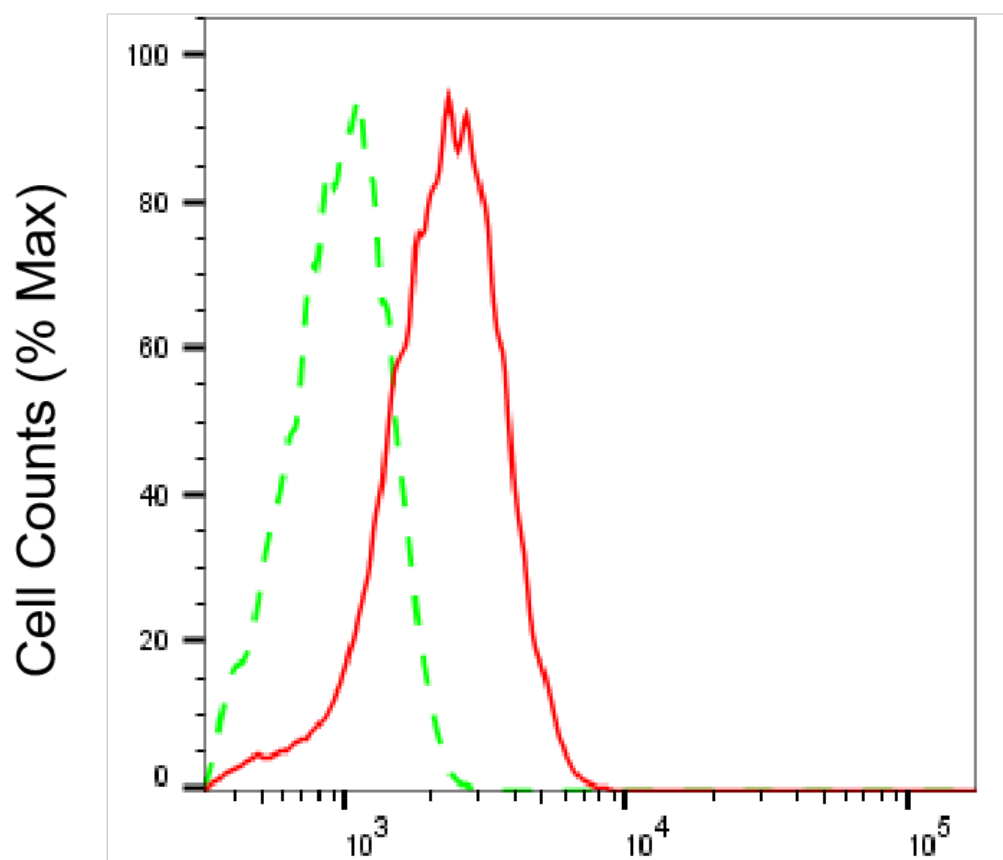
### SUPPORT

SUPPORT@GENUINBIOTECH.COM  
TEL: +1-540-855-7041

### ORDERS

SALES@GENUINBIOTECH.COM  
FAX: +1-540-855-7041

[WWW.GENUINBIOTECH.COM](http://WWW.GENUINBIOTECH.COM)



Copyright ©2025 Genuin Biotechnologies LLC

## MTHFR-Alexa Fluor® 647

Flow cytometric analysis of MTHFR expression in HeLa cells using anti-MTHFR antibody (Cat#65213, 1:2,000). Green, isotype control; red, MTHFR.

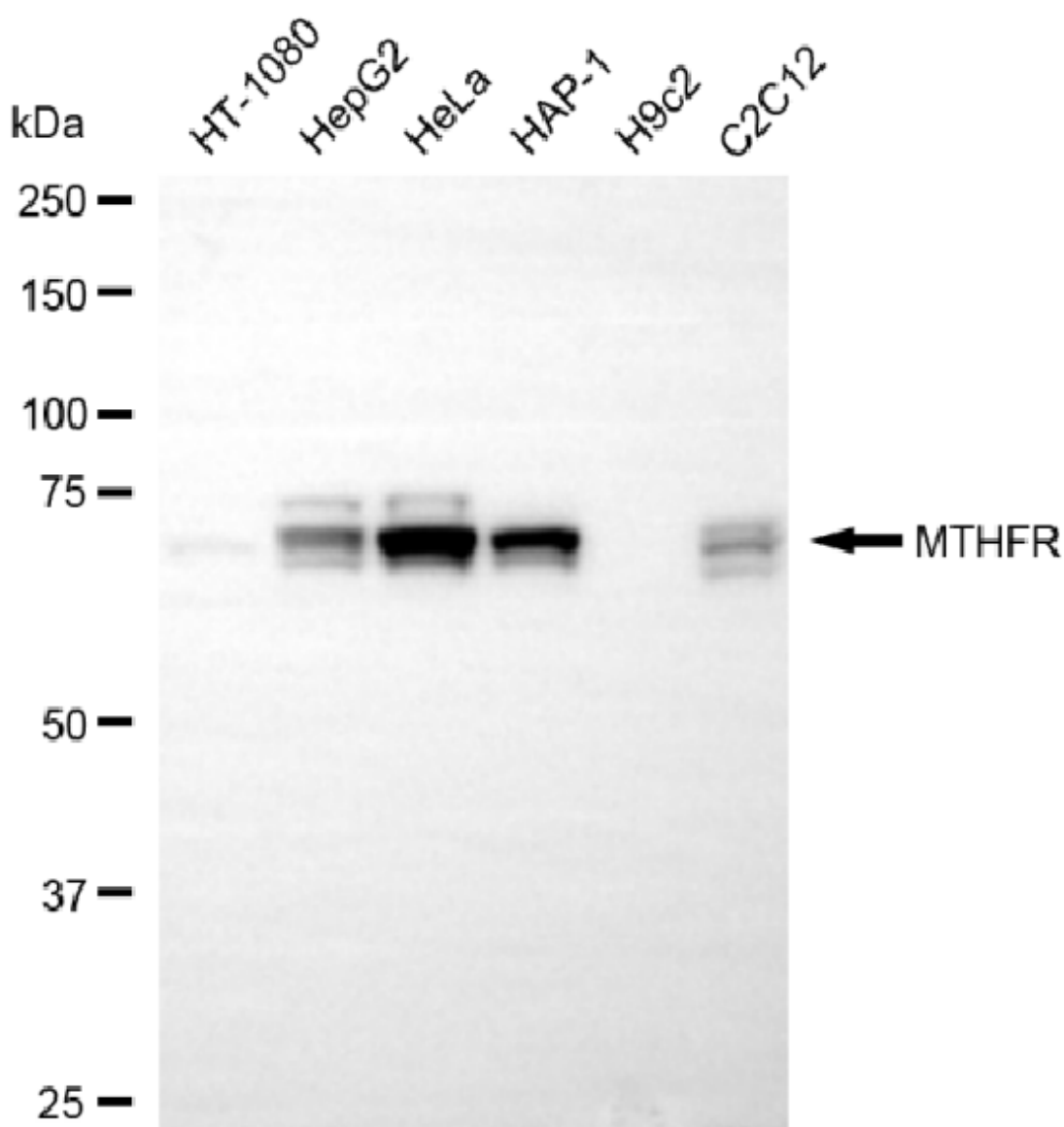
### SUPPORT

SUPPORT@GENUINBIOTECH.COM  
TEL: +1-540-855-7041

### ORDERS

SALES@GENUINBIOTECH.COM  
FAX: +1-540-855-7041

[WWW.GENUINBIOTECH.COM](http://WWW.GENUINBIOTECH.COM)



Copyright ©2025 Genuin Biotechnologies LLC

Western blotting analysis using anti-MTHFR antibody (Cat#65213). Total cell lysates (30  $\mu$ g) from various cell lines were loaded and separated by SDS-PAGE. The blot was incubated with anti-MTHFR antibody (Cat#65213, 1:5,000) and HRP-conjugated goat anti-rabbit secondary antibody (Cat#201, 1:20,000) respectively. Image was developed using NaQ™ ECL Substrate Kit (Cat#716).

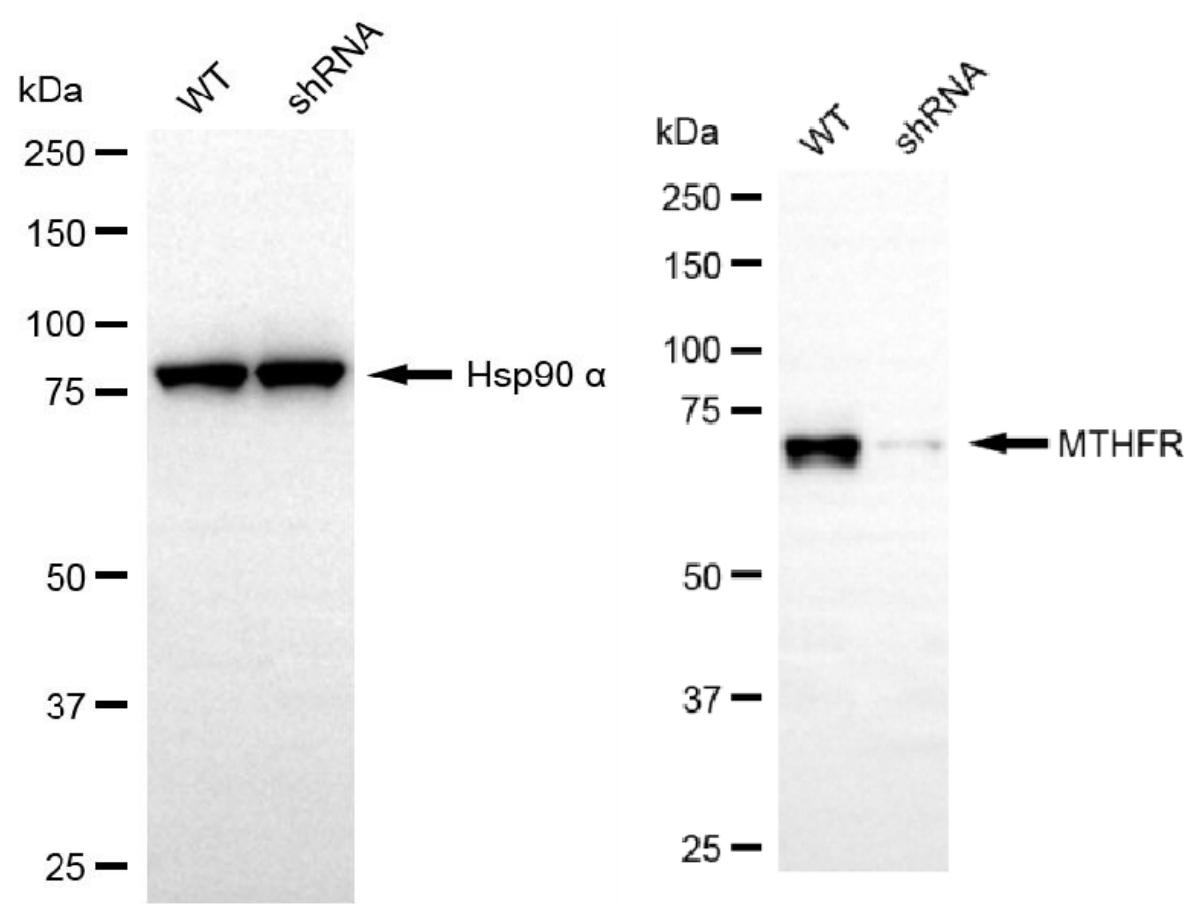
### SUPPORT

SUPPORT@GENUINBIOTECH.COM  
TEL: +1-540-855-7041

### ORDERS

SALES@GENUINBIOTECH.COM  
FAX: +1-540-855-7041

[WWW.GENUINBIOTECH.COM](http://WWW.GENUINBIOTECH.COM)



Western blotting analysis using anti-MTHFR antibody (Cat#65213). MTHFR expression in wild-type (WT) and MTHFR shRNA knockdown (KD) HeLa cells with 20 µg of total cell lysates. Hsp90 α serves as a loading control. The blot was incubated with anti-MTHFR antibody (Cat#65213, 1:5,000) and HRP-conjugated goat anti-rabbit secondary antibody (Cat#201, 1:20,000) respectively. Image was developed using NaQ™ ECL Substrate Kit (Cat#716).