

KD-Validated Anti-PAIP1 Rabbit Monoclonal Antibody



Catalog #: 65214

Aliases

PAIP1; Poly(A) Binding Protein Interacting Protein 1; PABP-Interacting Protein 1; Polyadenylate-Binding Protein-Interacting Protein 1; PAIP-1; Poly(A)-Binding Protein-Interacting Protein 1; PABC1-Interacting Protein 1

Background

Gene Name: PAIP1

NCBI Gene Entry: [10605](#)

UniProt Entry: [Q9H074](#)

Application Information

Molecular Weight: Predicted, 54 kDa; observed, 45-60 kDa

Clonality: Rabbit monoclonal antibody

Clone ID: 25GB195

Species Reactivity: Human, mouse, rat

Applications Tested: Western blotting (WB), flow cytometry (FCM)

Immunogen

A synthesized peptide derived from human PAIP1

Isotype

Rabbit IgG

Storage Buffer

Supplied in PBS (pH 7.4) containing 50% glycerol, and 0.02% sodium azide.

Storage

Store at -20 °C for one year.

Recommended Dilutions

Western Blotting (WB): 1:1,000-1:5,000

Flow Cytometry (FCM): 1:1,000

Note: This product is for research use only.

Validation Data

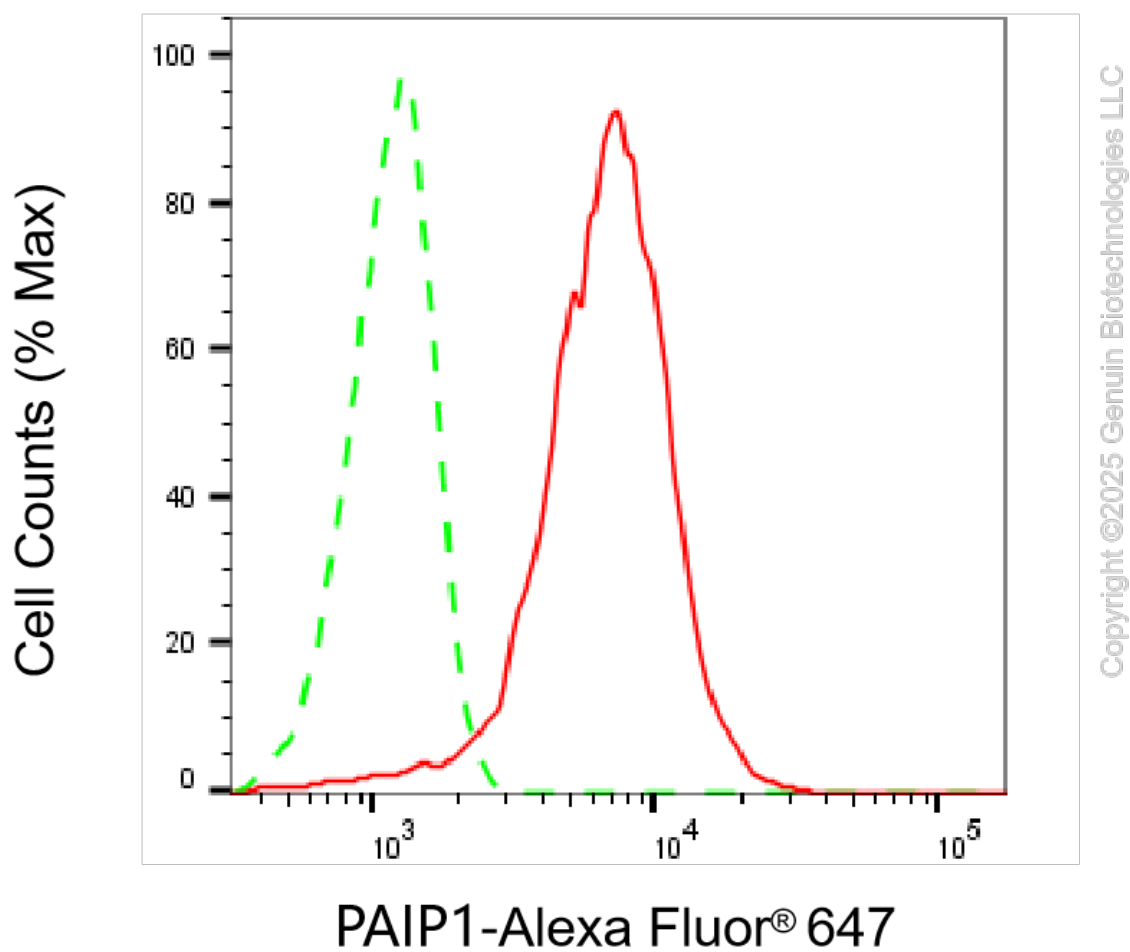
SUPPORT

SUPPORT@GENUINBIOTECH.COM
TEL: +1-540-855-7041

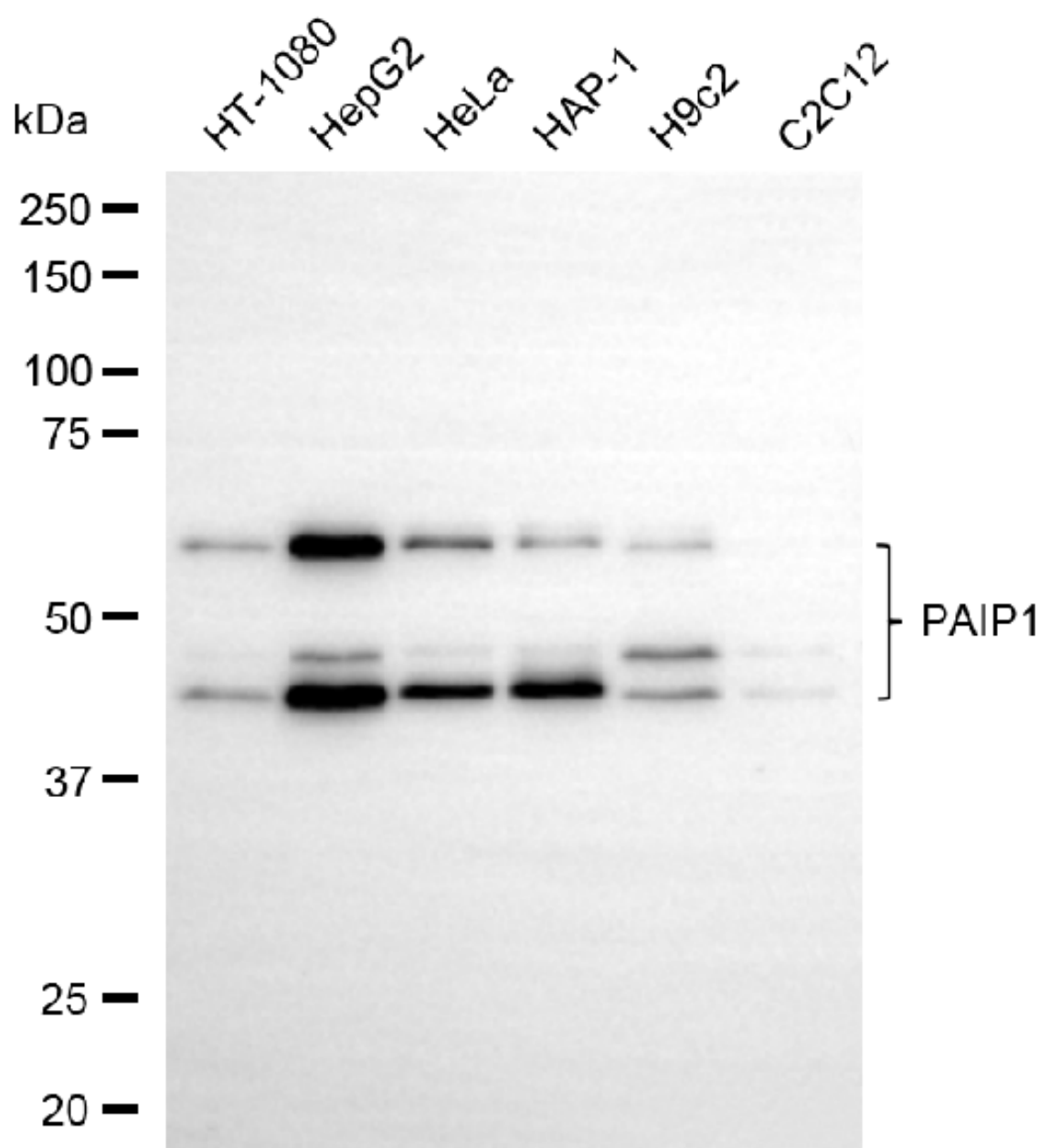
ORDERS

SALES@GENUINBIOTECH.COM
FAX: +1-540-855-7041

WWW.GENUINBIOTECH.COM

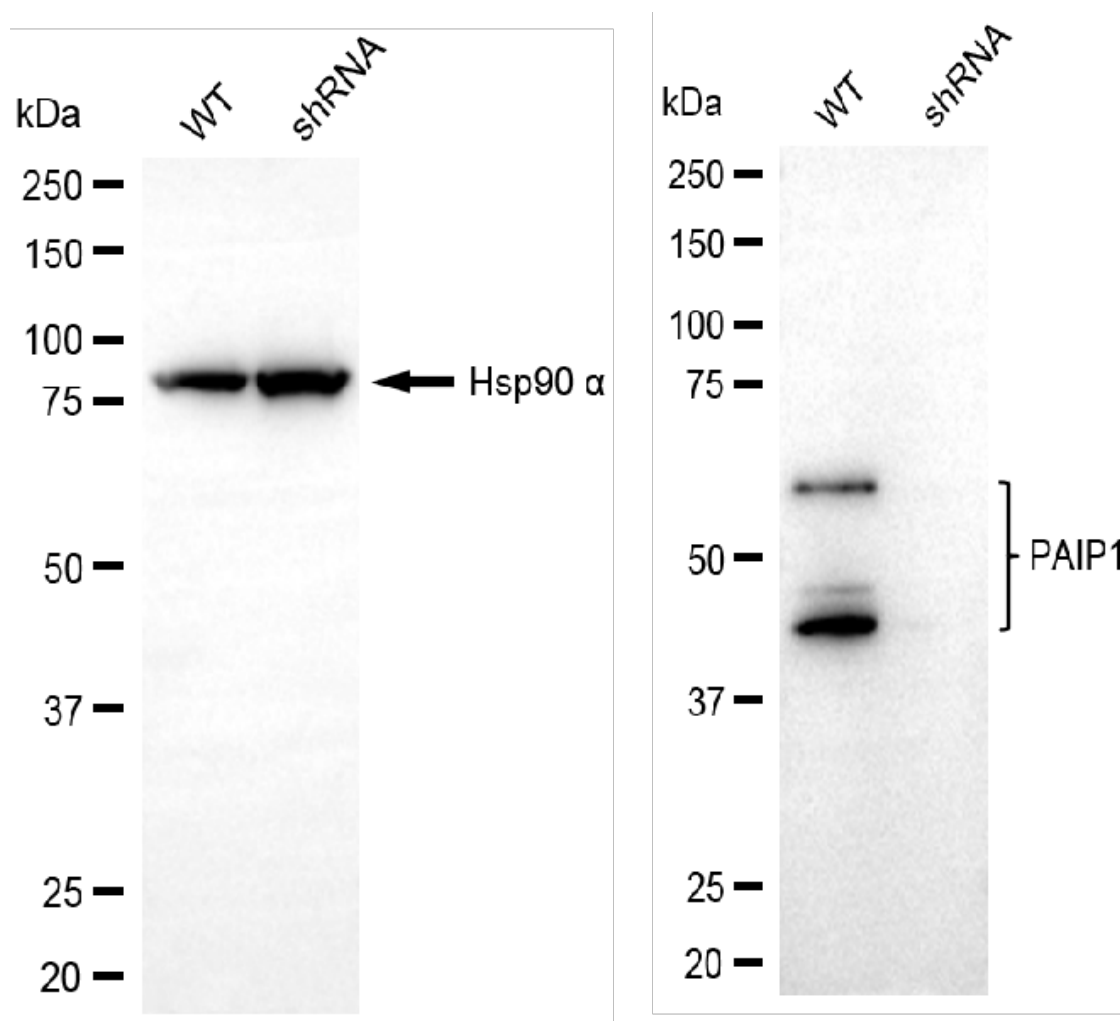


Flow cytometric analysis of PAIP1 expression in HepG2 cells using anti-PAIP1 antibody (Cat#65214, 1:2,000). Green, isotype control; red, PAIP1.



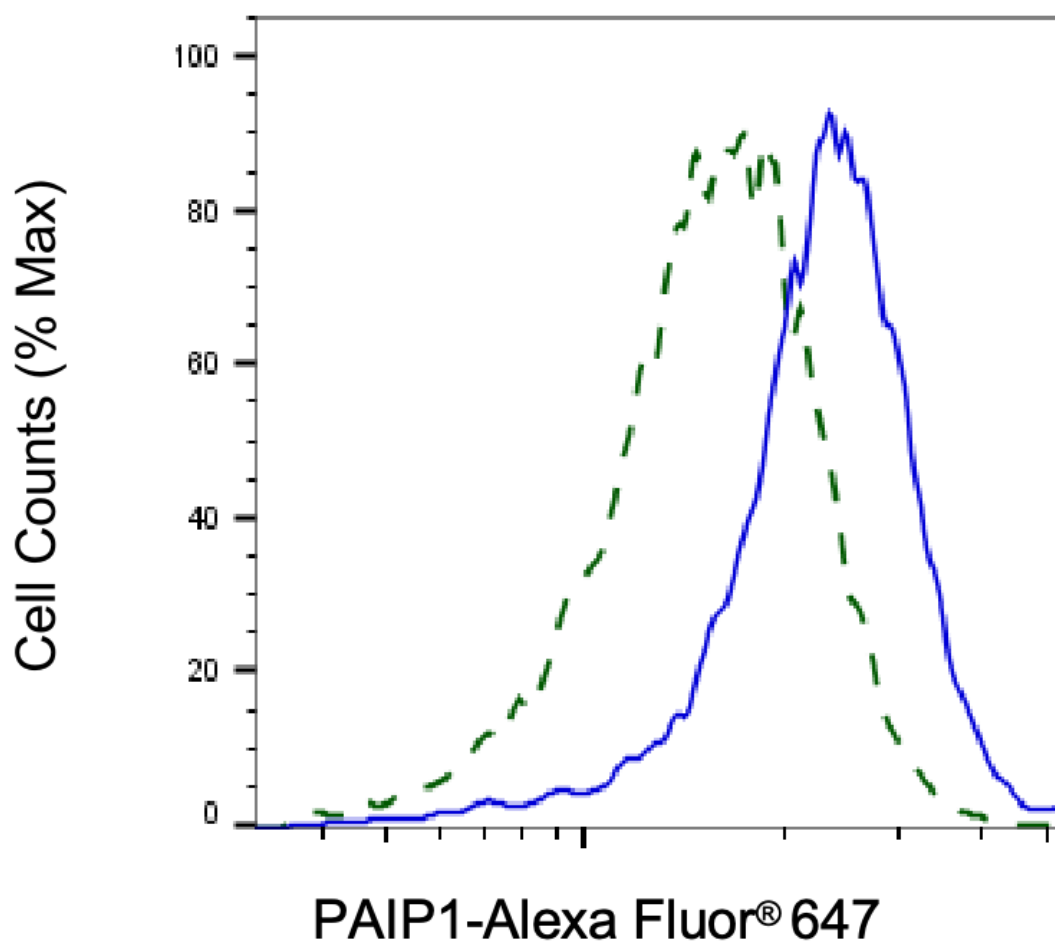
Copyright ©2025 Genuin Biotechnologies LLC

Western blotting analysis using anti-PAIP1 antibody (Cat#65214). Total cell lysates (30 µg) from various cell lines were loaded and separated by SDS-PAGE. The blot was incubated with anti-PAIP1 antibody (Cat#65214, 1:5,000) and HRP-conjugated goat anti-rabbit secondary antibody (Cat#201, 1:20,000) respectively. Image was developed using NaQ™ ECL Substrate Kit (Cat#716).



Copyright ©2025 Genuin Biotechnologies LLC

Western blotting analysis using anti-PAIP1 antibody (Cat#65214). PAIP1 expression in wild-type (WT) and PAIP1 shRNA knockdown (KD) HeLa cells with 30 µg of total cell lysates. Hsp90 α serves as a loading control. The blot was incubated with anti-PAIP1 antibody (Cat#65214, 1:5,000) and HRP-conjugated goat anti-rabbit secondary antibody (Cat#201, 1:20,000) respectively. Image was developed using FeQ™ ECL Substrate Kit (Cat#226).



Copyright ©2025 Genuin Biotechnologies LLC

Validation of PAIP1 knockdown using flow cytometry. Wild-type(WT, Blue) and knockdown(KD, Green) HeLa cells were stained with anti-PAIP1 antibody (Cat#65214, 1:2,000) and analyzed using BD flow cytometer.