

KD-Validated Anti-RAP1B Rabbit Monoclonal Antibody



Catalog #: 65217

Aliases

RAP1B; RAP1B, Member Of RAS Oncogene Family; K-REV; RAL1B; GTP-Binding Protein Smg P21B; Ras-Related Protein Rap-1b; DKFZp586H0723; Ras Family Small GTP Binding Protein RAP1B; RAS-Related Protein RAP1B; Small GTP Binding Protein; EC 3.6.5.2; THC11

Background

Gene Name: RAP1B

NCBI Gene Entry: [5908](#)

UniProt Entry: [P61224](#)

Application Information

Molecular Weight: Predicted, 21 kDa; observed, 20 kDa

Clonality: Rabbit monoclonal antibody

Clone ID: 25GB210

Species Reactivity: Human, mouse, rat

Applications Tested: Western blotting (WB), flow cytometry (FCM), immunocytochemistry (IC)

Immunogen

A synthesized peptide derived from human RAP1A/B

Isotype

Rabbit IgG

Storage Buffer

Supplied in PBS (pH 7.4) containing 50% glycerol, and 0.02% sodium azide.

Storage

Store at -20 °C for one year.

Recommended Dilutions

Western Blotting (WB): 1:1,000-1:5,000

Flow Cytometry (FCM): 1:1,000

Immunocytochemistry (IC): 1:100-1:1,000

Note: This product is for research use only.

SUPPORT

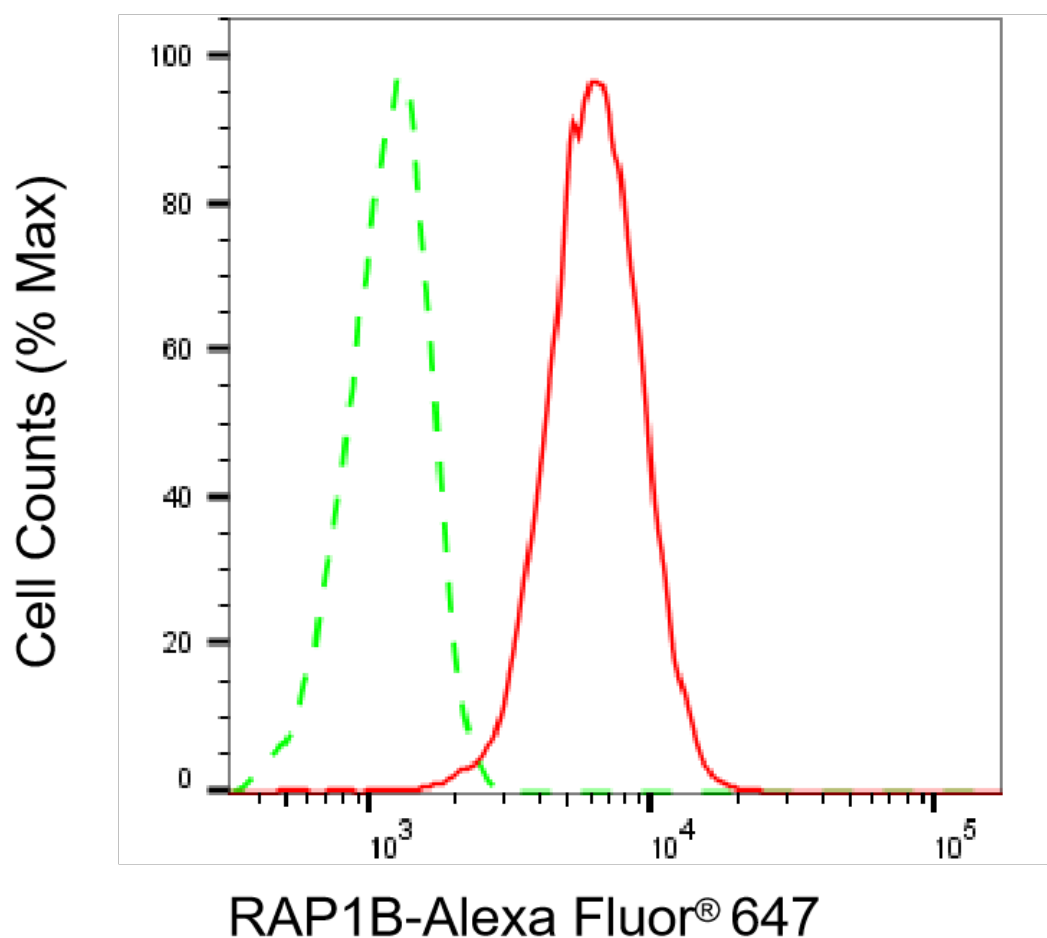
SUPPORT@GENUINBIOTECH.COM
TEL: +1-540-855-7041

ORDERS

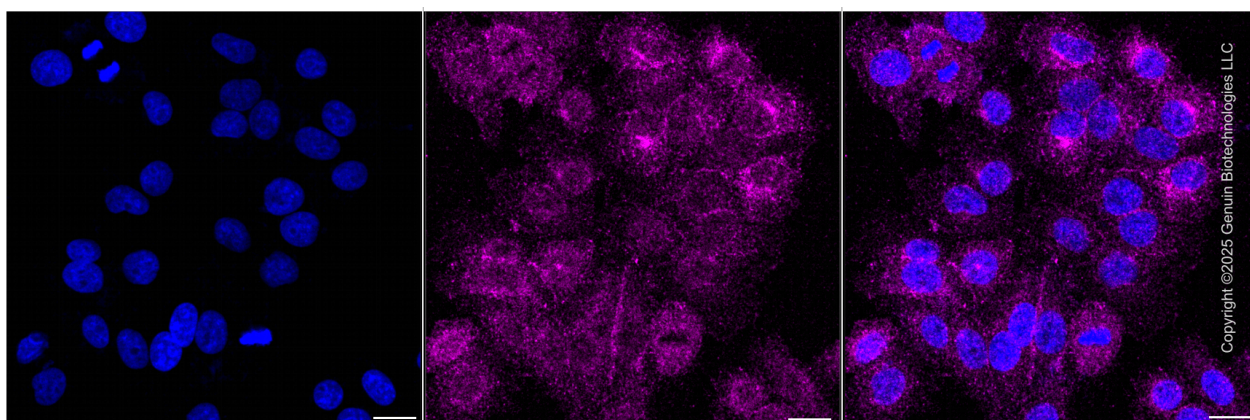
SALES@GENUINBIOTECH.COM
FAX: +1-540-855-7041

WWW.GENUINBIOTECH.COM

Validation Data



Flow cytometric analysis of RAP1B expression in HepG2 cells using anti-RAP1B antibody (Cat#65217, 1:2,000). Green, isotype control; red, RAP1B.



Immunocytochemical staining of HepG2 cells with anti-RAP1B antibody (Cat#65217, 1:1,000) . Nuclei were stained blue with DAPI; RAP1B was stained magenta with Alexa Fluor® 647.

SUPPORT

SUPPORT@GENUINBIOTECH.COM
TEL: +1-540-855-7041

ORDERS

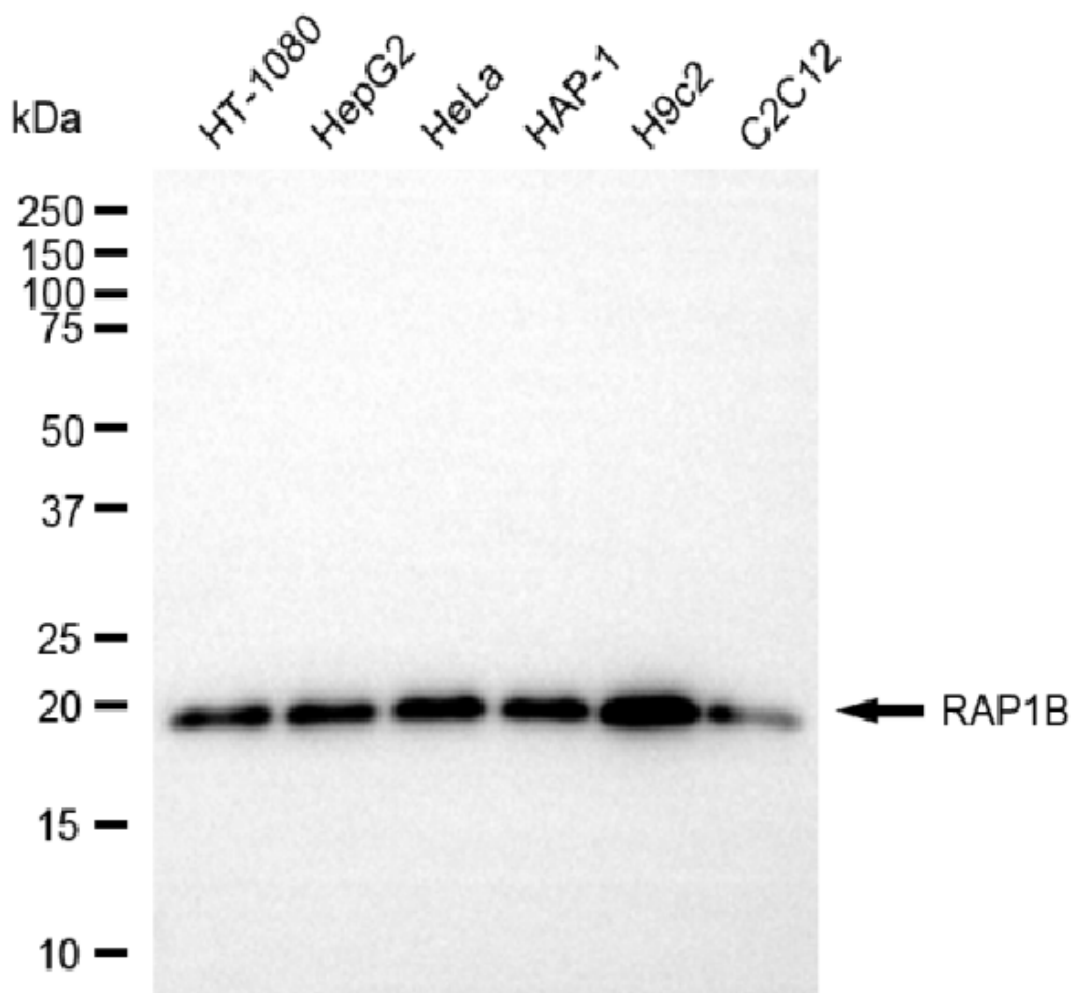
SALES@GENUINBIOTECH.COM
FAX: +1-540-855-7041

WWW.GENUINBIOTECH.COM

KD-Validated Anti-RAP1B Rabbit Monoclonal Antibody

PAGE 3

Images were taken using Leica stellaris 5. Protein abundance based on laser Intensity and smart gain: Low. Scale bar, 20 μ m.



Copyright ©2025 Genuin Biotechnologies LLC

Western blotting analysis using anti-RAP1B antibody (Cat#65217). Total cell lysates (30 μ g) from various cell lines were loaded and separated by SDS-PAGE. The blot was incubated with anti-RAP1B antibody (Cat#65217, 1:5,000) and HRP-conjugated goat anti-rabbit secondary antibody (Cat#201, 1:20,000) respectively. Image was developed using NaQ™ ECL Substrate Kit (Cat#716).

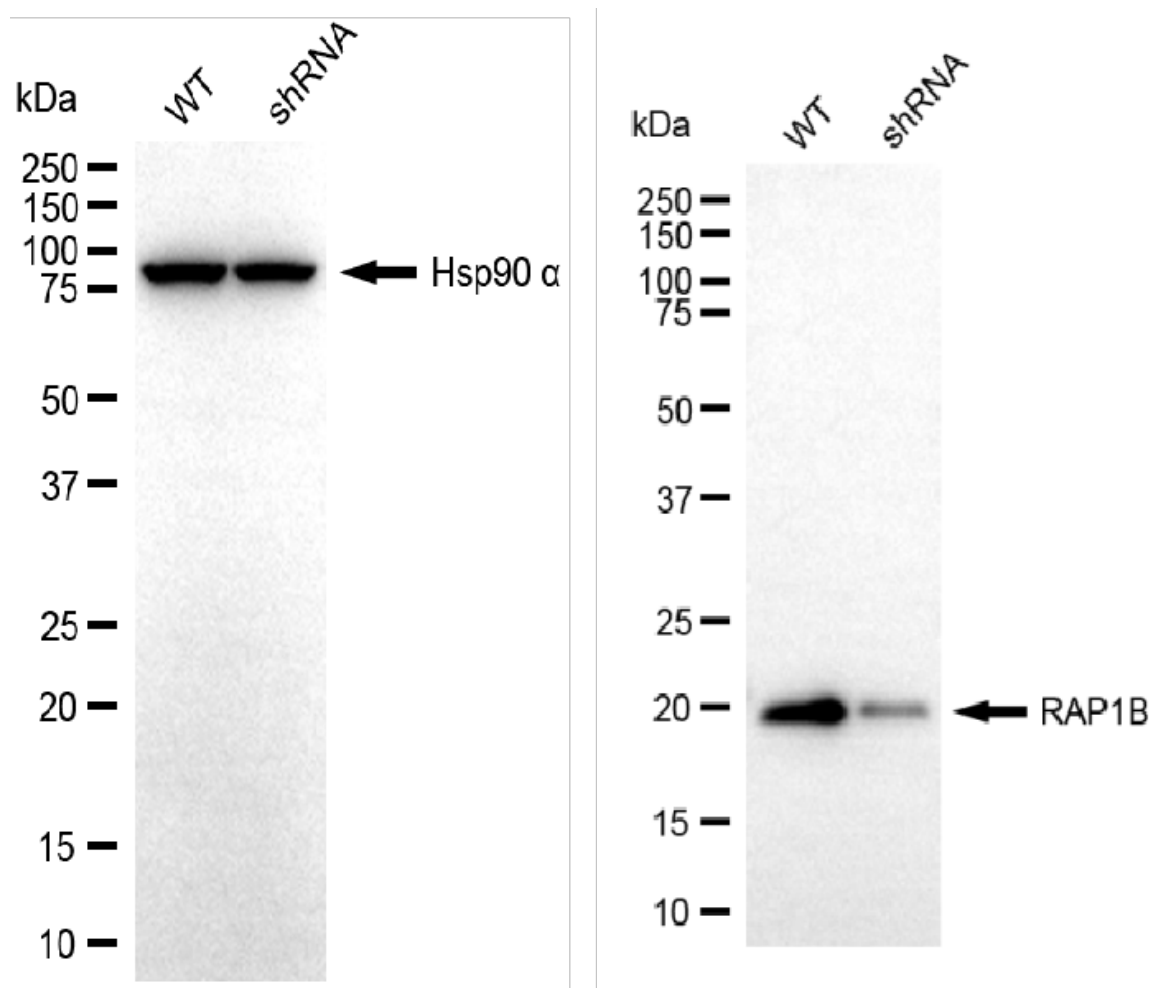
SUPPORT

SUPPORT@GENUINBIOTECH.COM
TEL: +1-540-855-7041

ORDERS

SALES@GENUINBIOTECH.COM
FAX: +1-540-855-7041

WWW.GENUINBIOTECH.COM



Copyright ©2025 Genuin Biotechnologies LLC

Western blotting analysis using anti-RAP1B antibody (Cat#65217). RAP1B expression in wild-type (WT) and RAP1B shRNA knockdown (KD) HT-1080 cells with 20 µg of total cell lysates. Hsp90 α serves as a loading control. The blot was incubated with anti-RAP1B antibody (Cat#65217, 1:5,000) and HRP-conjugated goat anti-rabbit secondary antibody (Cat#201, 1:20,000) respectively. Image was developed using NaQ™ ECL Substrate Kit (Cat#716).