

# KD-Validated Anti-DAB2 Rabbit Monoclonal Antibody



**Catalog #: 65221**

## Aliases

DAB2; DAB Adaptor Protein 2; DOC-2; Differentially Expressed In Ovarian Carcinoma 2; Differentially-Expressed Protein 2; DAB2, Clathrin Adaptor Protein 2; Adaptor Molecule Disabled-2; Disabled Homolog 2; DOC2; Disabled (Drosophila) Homolog 2 (Mitogen-Responsive Phosphoprotein); Disabled Homolog 2, Mitogen-Responsive Phosphoprotein (Drosophila); Dab, Mitogen-Responsive Phosphoprotein, Homolog 2 (Drosophila); Disabled Homolog 2, Mitogen-Responsive Phosphoprotein; Dab, Mitogen-Responsive Phosphoprotein, Homolog 2

## Background

Gene Name: DAB2

NCBI Gene Entry: [1601](#)

UniProt Entry: [P98082](#)

## Application Information

Molecular Weight: Predicted, 82 kDa; observed, 96 kDa

Clonality: Rabbit monoclonal antibody

Clone ID: 25GB225

Species Reactivity: Human, mouse, rat

Applications Tested: Western blotting (WB), flow cytometry (FCM), immunocytochemistry (IC)

## Immunogen

A synthesized peptide derived from human DAB2

## Isotype

Rabbit IgG

## Storage Buffer

Supplied in PBS (pH 7.4) containing 50% glycerol, and 0.02% sodium azide.

## Storage

Store at -20 °C for one year.

## Recommended Dilutions

Western Blotting (WB): 1:1,000-1:5,000

Flow Cytometry (FCM): 1:1,000

Immunocytochemistry (IC): 1:100-1:1,000

---

### SUPPORT

SUPPORT@GENUINBIOTECH.COM  
TEL: +1-540-855-7041

### ORDERS

SALES@GENUINBIOTECH.COM  
FAX: +1-540-855-7041

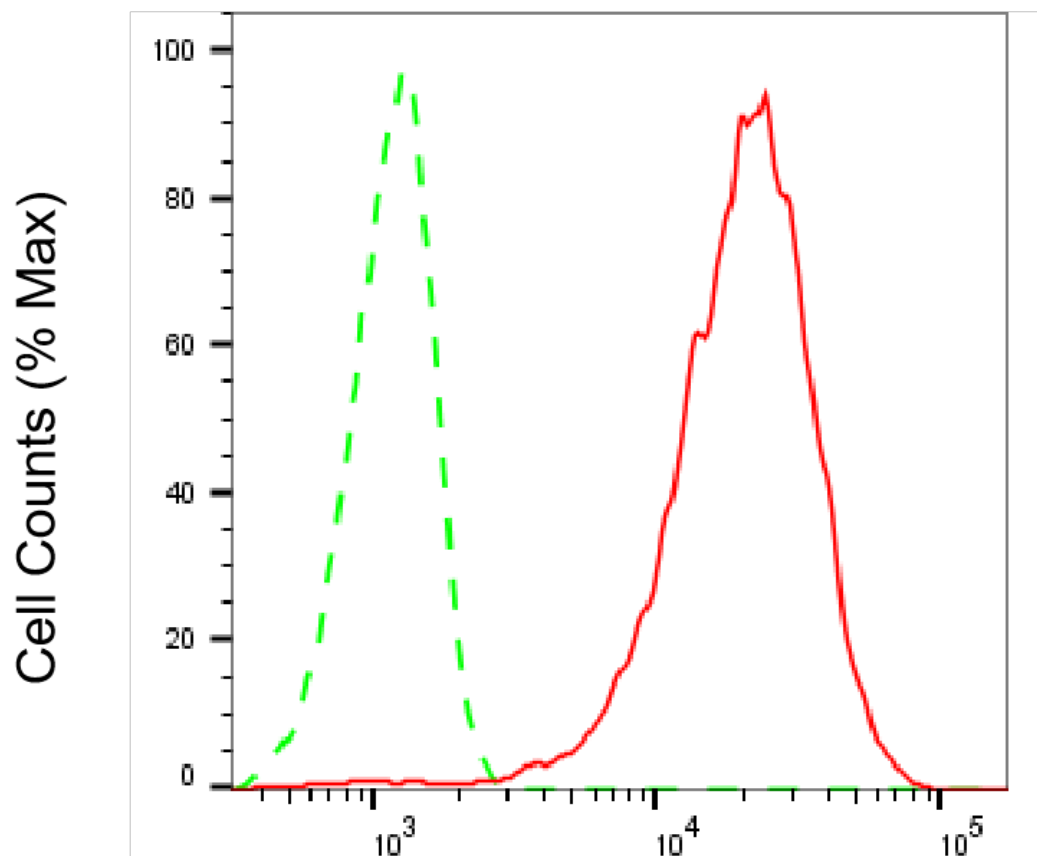
[WWW.GENUINBIOTECH.COM](http://WWW.GENUINBIOTECH.COM)

# KD-Validated Anti-DAB2 Rabbit Monoclonal Antibody

PAGE 2

**Note:** This product is for research use only.

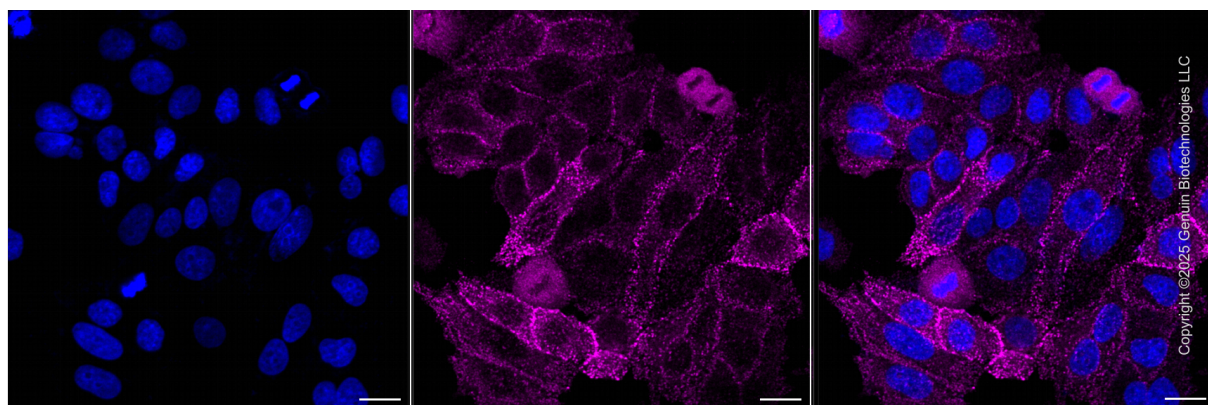
## Validation Data



Copyright ©2025 Genuin Biotechnologies LLC

### DAB2-Alexa Fluor® 647

Flow cytometric analysis of DAB2 expression in HepG2 cells using anti-DAB2 antibody (Cat#65221, 1:2,000). Green, isotype control; red, DAB2.



Copyright ©2025 Genuin Biotechnologies LLC

## SUPPORT

SUPPORT@GENUINBIOTECH.COM  
TEL: +1-540-855-7041

## ORDERS

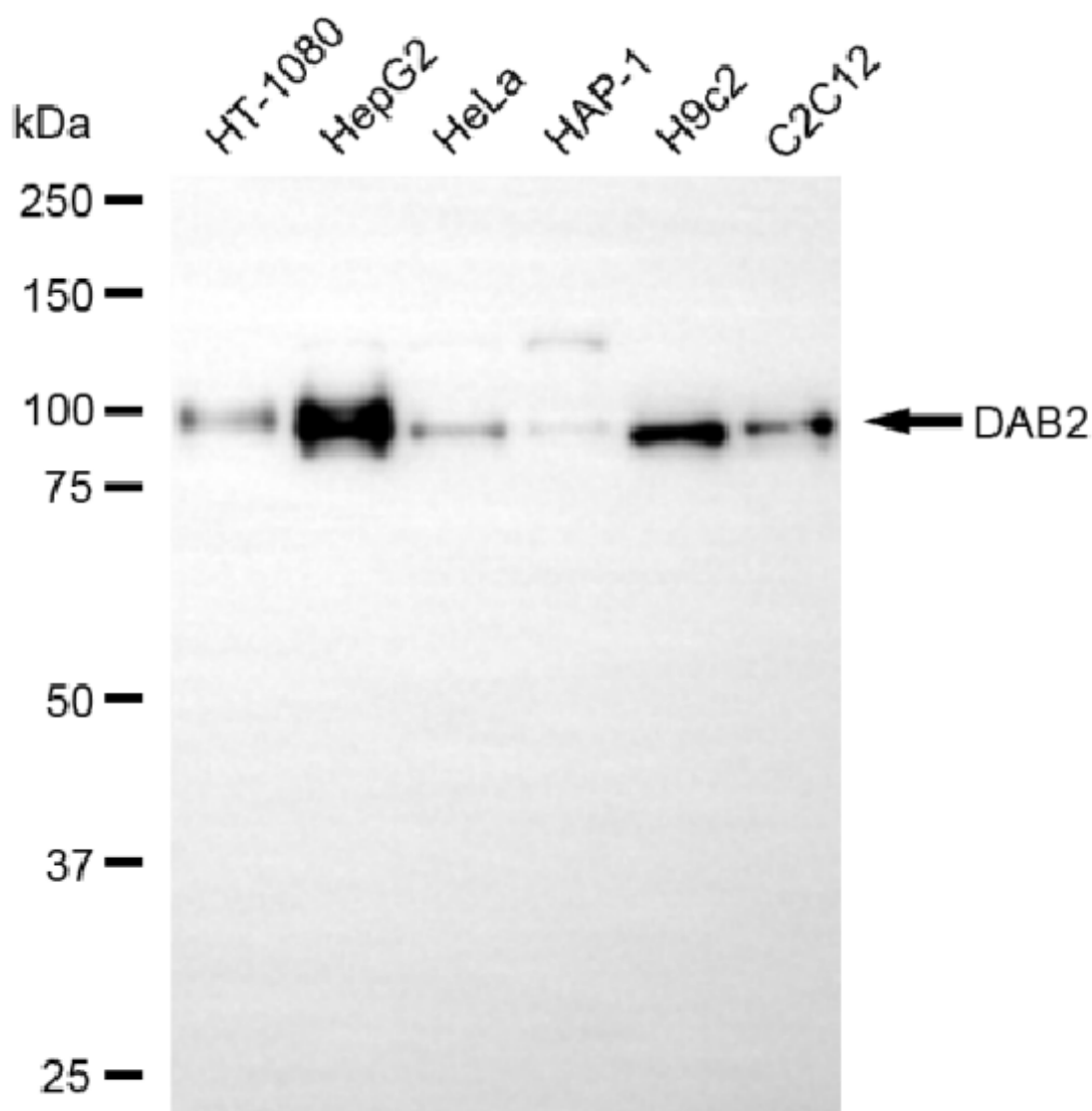
SALES@GENUINBIOTECH.COM  
FAX: +1-540-855-7041

WWW.GENUINBIOTECH.COM

## KD-Validated Anti-DAB2 Rabbit Monoclonal Antibody

PAGE 3

Immunocytochemical staining of HepG2 cells with anti-DAB2 antibody (Cat#65221, 1:1,000). Nuclei were stained blue with DAPI; DAB2 was stained magenta with Alexa Fluor® 647. Images were taken using Leica stellaris 5. Protein abundance based on laser Intensity and smart gain: Medium. Scale bar, 20  $\mu$ m.



Copyright ©2025 Genuin Biotechnologies LLC

Western blotting analysis using anti-DAB2 antibody (Cat#65221). Total cell lysates (30  $\mu$ g) from various cell lines were loaded and separated by SDS-PAGE. The blot was incubated with anti-DAB2 antibody (Cat#65221, 1:5,000) and HRP-conjugated goat anti-rabbit secondary antibody (Cat#201, 1:20,000) respectively. Image was developed using NaQ™ ECL Substrate Kit (Cat#716).

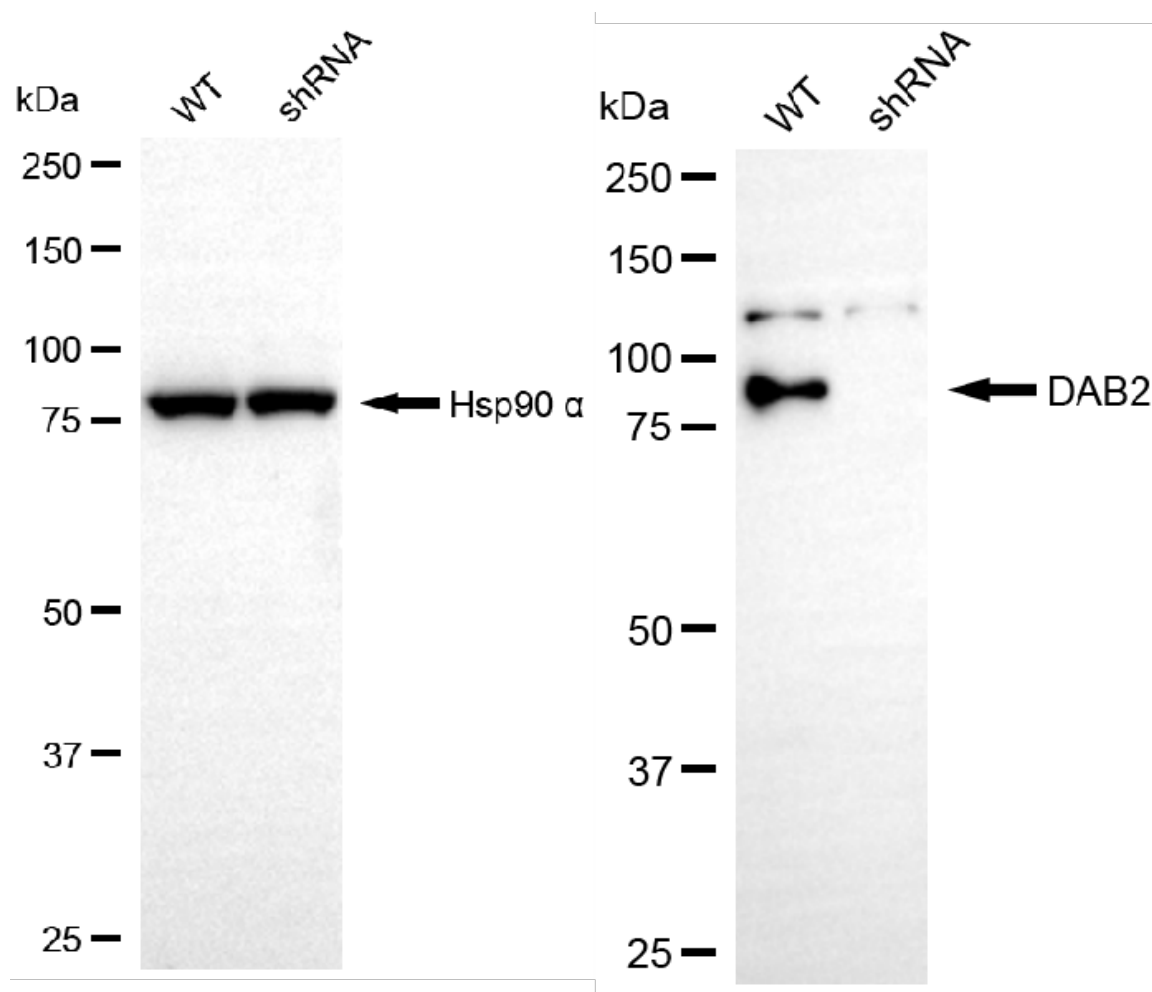
### SUPPORT

SUPPORT@GENUINBIOTECH.COM  
TEL: +1-540-855-7041

### ORDERS

SALES@GENUINBIOTECH.COM  
FAX: +1-540-855-7041

WWW.GENUINBIOTECH.COM



Copyright ©2025 Genuin Biotechnologies LLC

Western blotting analysis using anti-DAB2 antibody (Cat#65221). DAB2 expression in wild-type (WT) and DAB2 shRNA knockdown (KD) HeLa cells with 20  $\mu$ g of total cell lysates. Hsp90  $\alpha$  serves as a loading control. The blot was incubated with anti-DAB2 antibody (Cat#65221, 1:5,000) and HRP-conjugated goat anti-rabbit secondary antibody (Cat#201, 1:20,000) respectively. Image was developed using NaQ™ ECL Substrate Kit (Cat#716).