

KD-Validated Anti-EFEMP1 Rabbit Monoclonal Antibody



Catalog #: 65222

Aliases

EFEMP1; EGF Containing Fibulin Extracellular Matrix Protein 1; FBLN3; EGF-Containing Fibulin-Like Extracellular Matrix Protein 1; S1-5; MTLV; FBNL; EGF Containing Fibulin Like Extracellular Matrix Protein 1; Extracellular Protein S1-5; Fibulin-3; FIBL-3; DHRD; Glaucoma 1, Open Angle, H (Adult-Onset); Fibrillin-Like Protein; Fibrillin-Like; Fibulin 3; ARCL1D; GLC1H; DRAD; MLVT

Background

Gene Name: EFEMP1

NCBI Gene Entry: [2202](#)

UniProt Entry: [Q12805](#)

Application Information

Molecular Weight: Predicted, 55 kDa; observed, 55-65 kDa

Clonality: Rabbit monoclonal antibody

Clone ID: 25GB230

Species Reactivity: Human

Applications Tested: Western blotting (WB), flow cytometry (FCM)

Immunogen

Recombinant protein of human EFEMP1/Fibulin-3

Isotype

Rabbit IgG

Storage Buffer

Supplied in PBS (pH 7.4) containing 50% glycerol, and 0.02% sodium azide.

Storage

Store at -20 °C for one year.

Recommended Dilutions

Western Blotting (WB): 1:1,000-1:5,000

Flow Cytometry (FCM): 1:2,000

Immunocytochemistry (IC): 1:100-1:1,000

SUPPORT

SUPPORT@GENUINBIOTECH.COM
TEL: +1-540-855-7041

ORDERS

SALES@GENUINBIOTECH.COM
FAX: +1-540-855-7041

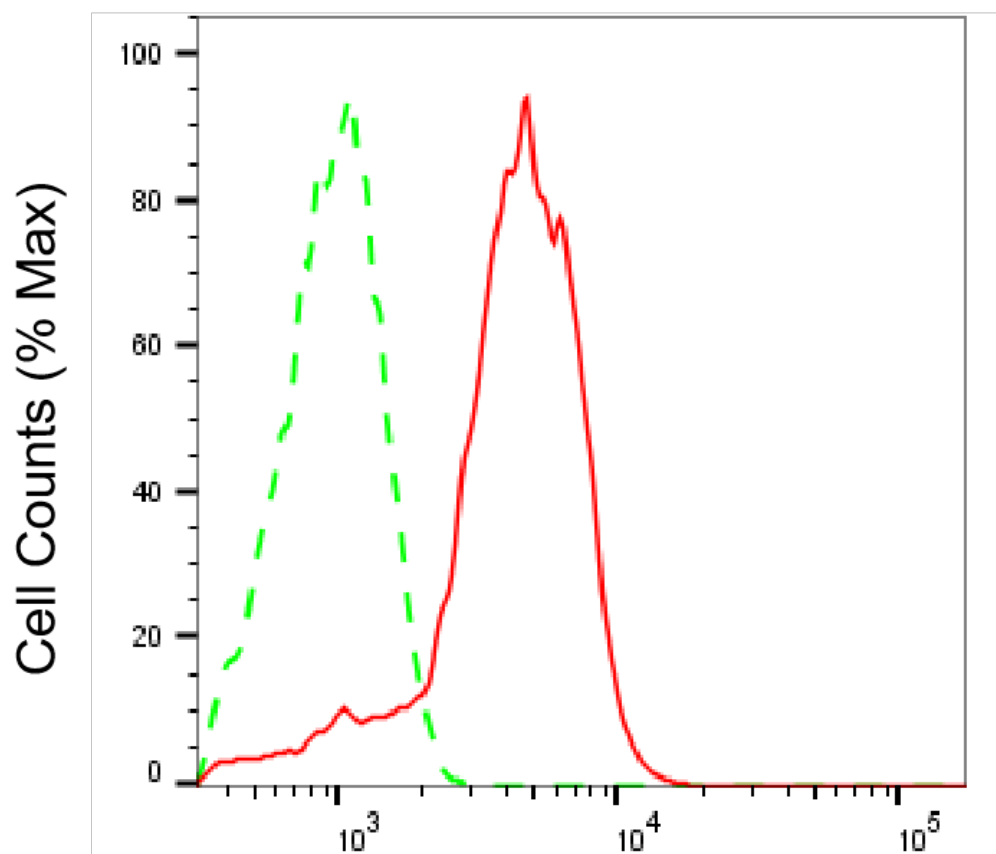
WWW.GENUINBIOTECH.COM

KD-Validated Anti-EFEMP1 Rabbit Monoclonal Antibody

PAGE 2

Note: This product is for research use only.

Validation Data



Copyright ©2025 Genuin Biotechnologies LLC

EFEMP1-Alexa Fluor® 647

Flow cytometric analysis of EFEMP1 expression in HeLa cells using anti-EFEMP1 antibody (Cat#65222, 1:2,000). Green, isotype control; red, EFEMP1.

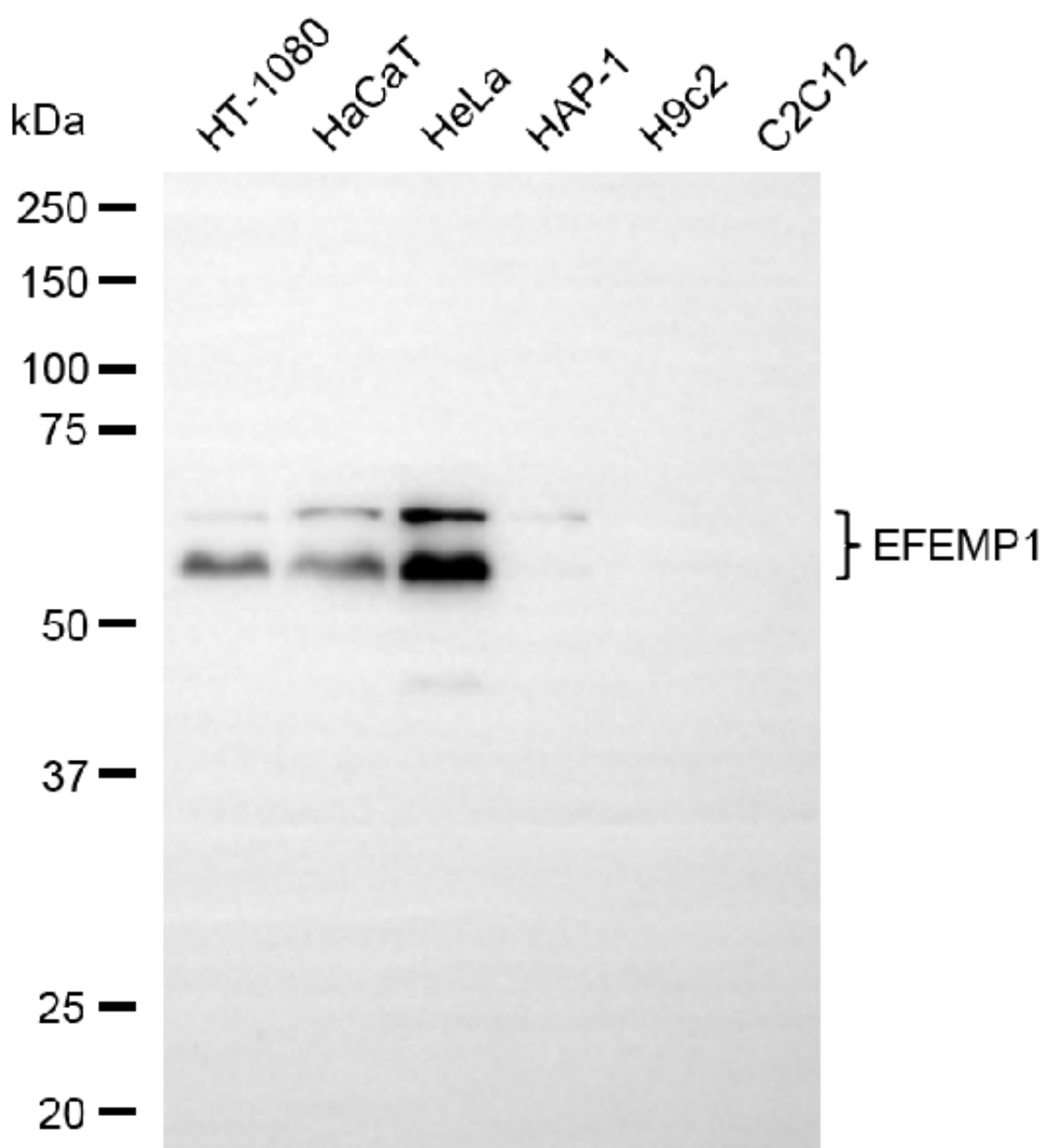
SUPPORT

SUPPORT@GENUINBIOTECH.COM
TEL: +1-540-855-7041

ORDERS

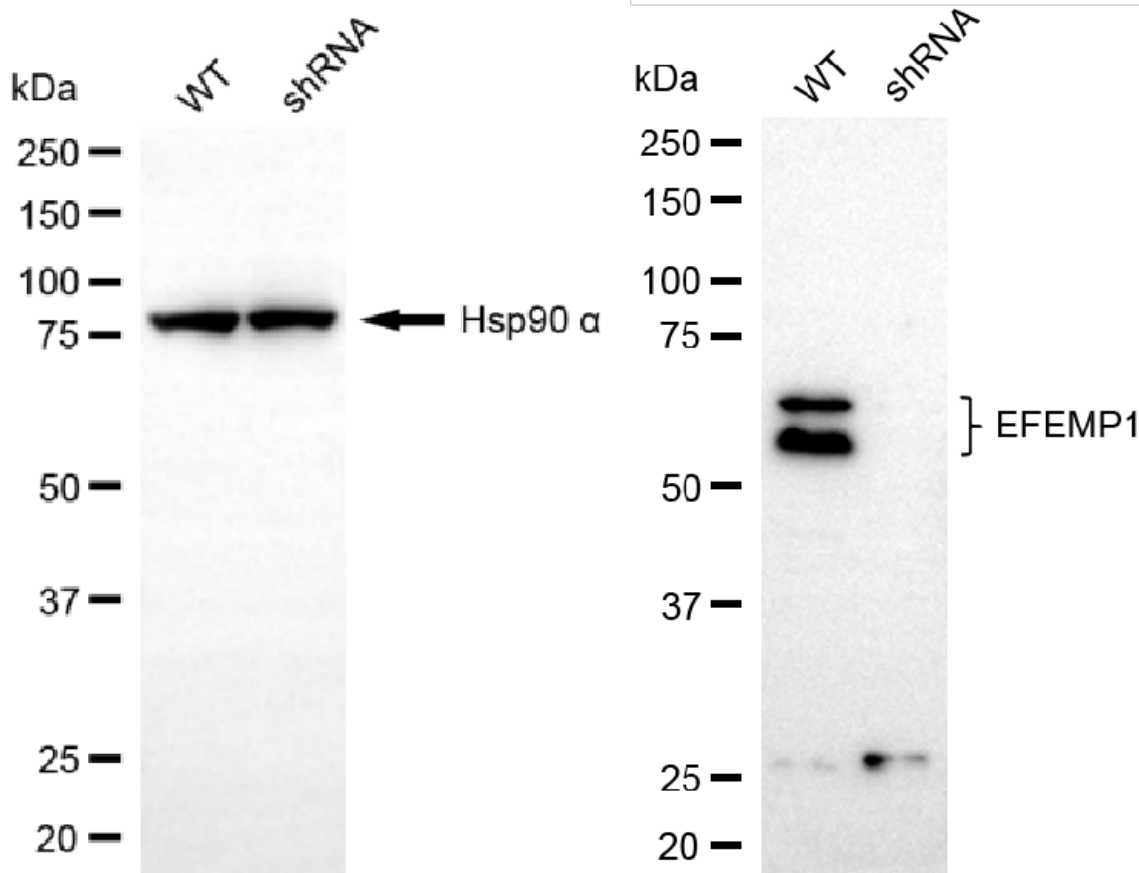
SALES@GENUINBIOTECH.COM
FAX: +1-540-855-7041

WWW.GENUINBIOTECH.COM



Copyright ©2025 Genuin Biotechnologies LLC

Western blotting analysis using anti-EFEMP1 antibody (Cat#65222). Total cell lysates (30 µg) from various cell lines were loaded and separated by SDS-PAGE. The blot was incubated with anti-EFEMP1 antibody (Cat#65222, 1:5,000) and HRP-conjugated goat anti-rabbit secondary antibody (Cat#201, 1:20,000) respectively. Image was developed using FeQ™ ECL Substrate Kit (Cat#226).



Copyright ©2025 Genuin Biotechnologies LLC

Western blotting analysis using anti-EFEMP1 antibody (Cat#65222). EFEMP1 expression in wild-type (WT) and EFEMP1 shRNA knockdown (KD) HeLa cells with 20 µg of total cell lysates. Hsp90 α serves as a loading control. The blot was incubated with anti-EFEMP1 antibody (Cat#65222, 1:5,000) and HRP-conjugated goat anti-rabbit secondary antibody (Cat#201, 1:20,000) respectively. Image was developed using NaQ™ ECL Substrate Kit (Cat#716).