

KD-Validated Anti-DYNLT1 Rabbit Monoclonal Antibody



Catalog #: 65226

Aliases

DYNLT1; Dynein Light Chain Tctex-Type 1; TCTEX1; Tctex-1; TCTEL1; T-Complex-Associated-Testis-Expressed 1-Like 1; T-Complex Testis-Specific Protein 1 Homolog; Protein CW-1; TCTEX-1; CW-1

Background

Gene Name: DYNLT1

NCBI Gene Entry: [6993](#)

UniProt Entry: [P63172](#)

Application Information

Molecular Weight: Predicted, 12 kDa; observed, 14 kDa

Clonality: Rabbit monoclonal antibody

Clone ID: 25GB245

Species Reactivity: Human, mouse, rat

Applications Tested: Western blotting (WB), flow cytometry (FCM), immunocytochemistry (IC)

Immunogen

Recombinant protein of human TCTEX-1

Isotype

Rabbit IgG

Storage Buffer

Supplied in PBS (pH 7.4) containing 50% glycerol, and 0.02% sodium azide.

Storage

Store at -20 °C for one year.

Recommended Dilutions

Western Blotting (WB): 1:1,000-1:5,000

Flow Cytometry (FCM): 1:1,000

Immunocytochemistry (IC): 1:100-1:1,000

Note: This product is for research use only.

SUPPORT

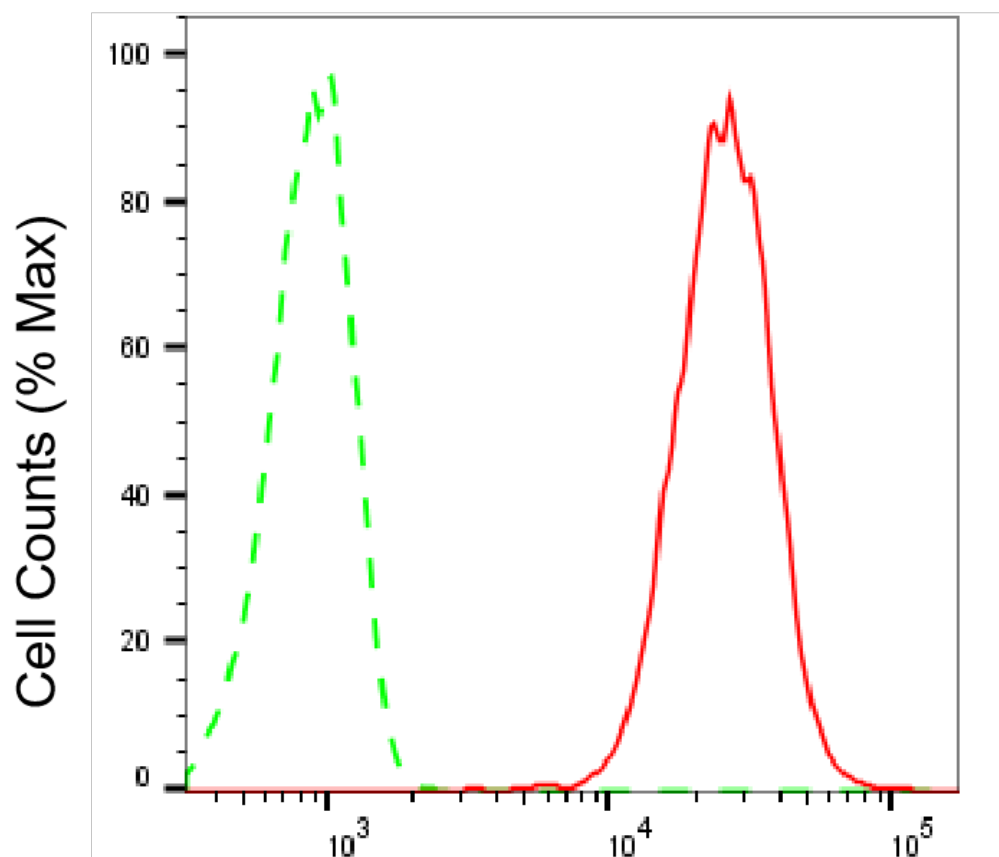
SUPPORT@GENUINBIOTECH.COM
TEL: +1-540-855-7041

ORDERS

SALES@GENUINBIOTECH.COM
FAX: +1-540-855-7041

WWW.GENUINBIOTECH.COM

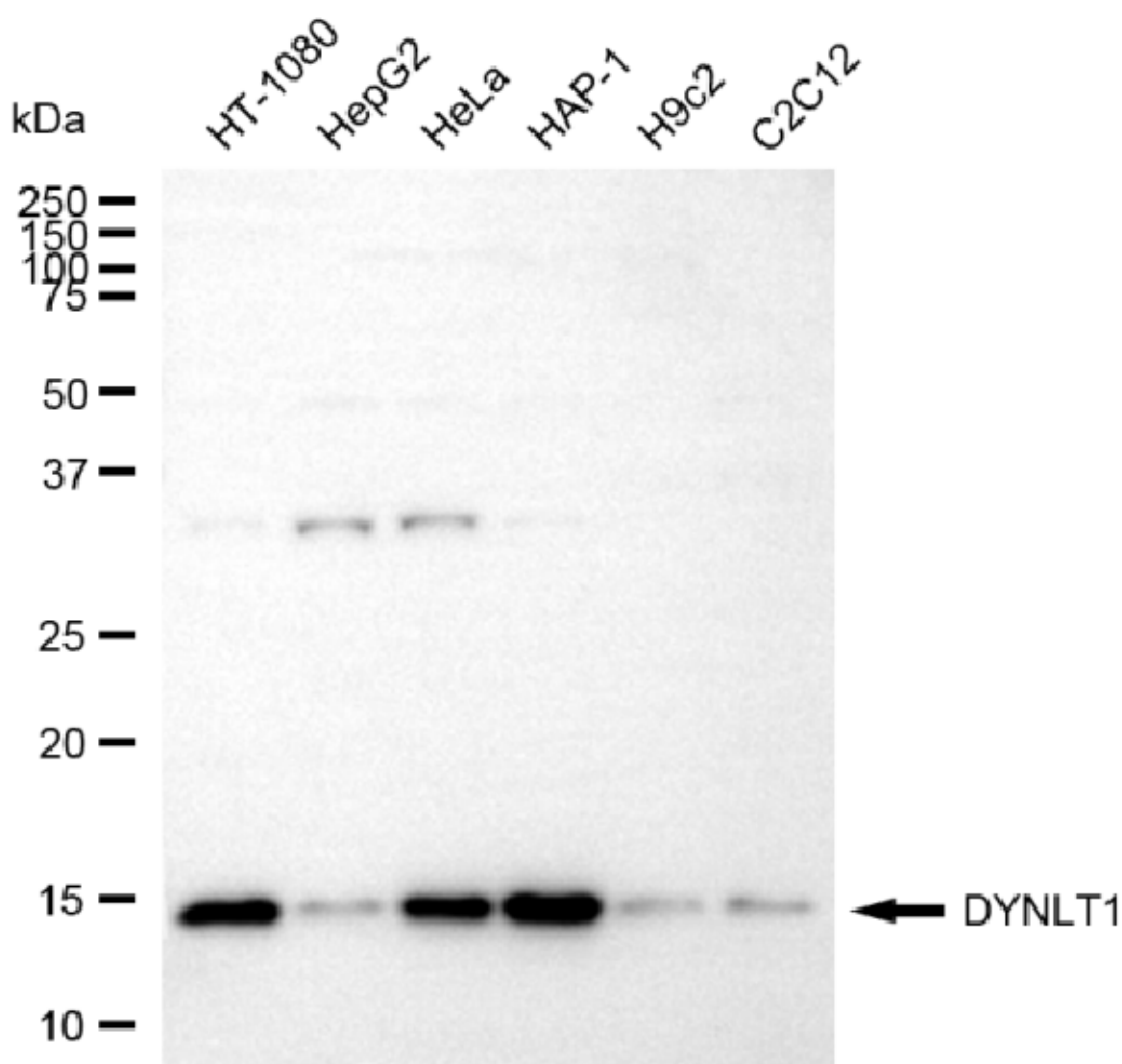
Validation Data



Copyright ©2025 Genuin Biotechnologies LLC

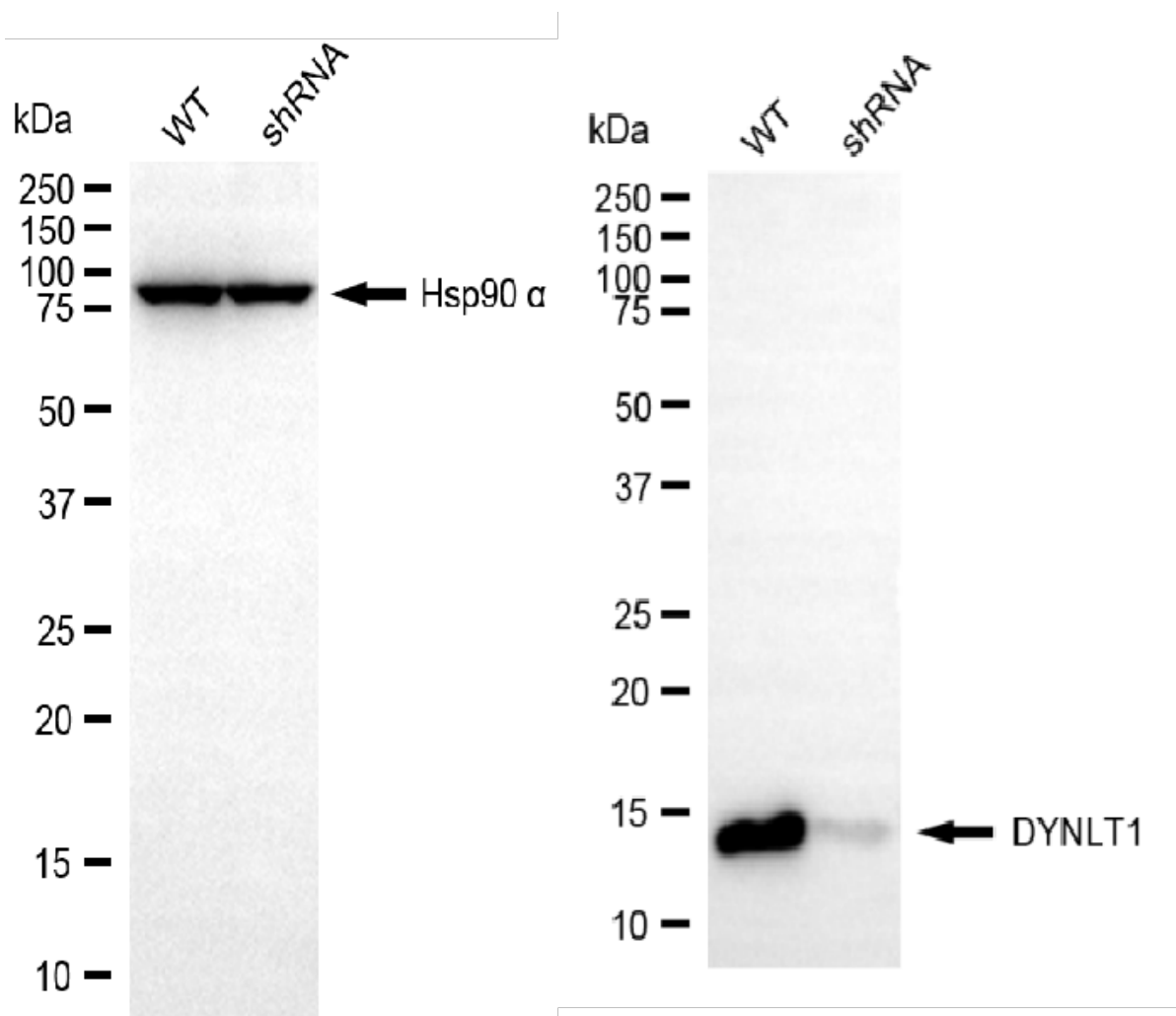
DYNLT1-Alexa Fluor® 647

Flow cytometric analysis of DYNLT1 expression in HT-1080 cells using anti-DYNLT1 antibody (Cat#65226, 1:2,000). Green, isotype control; red, DYNLT1.



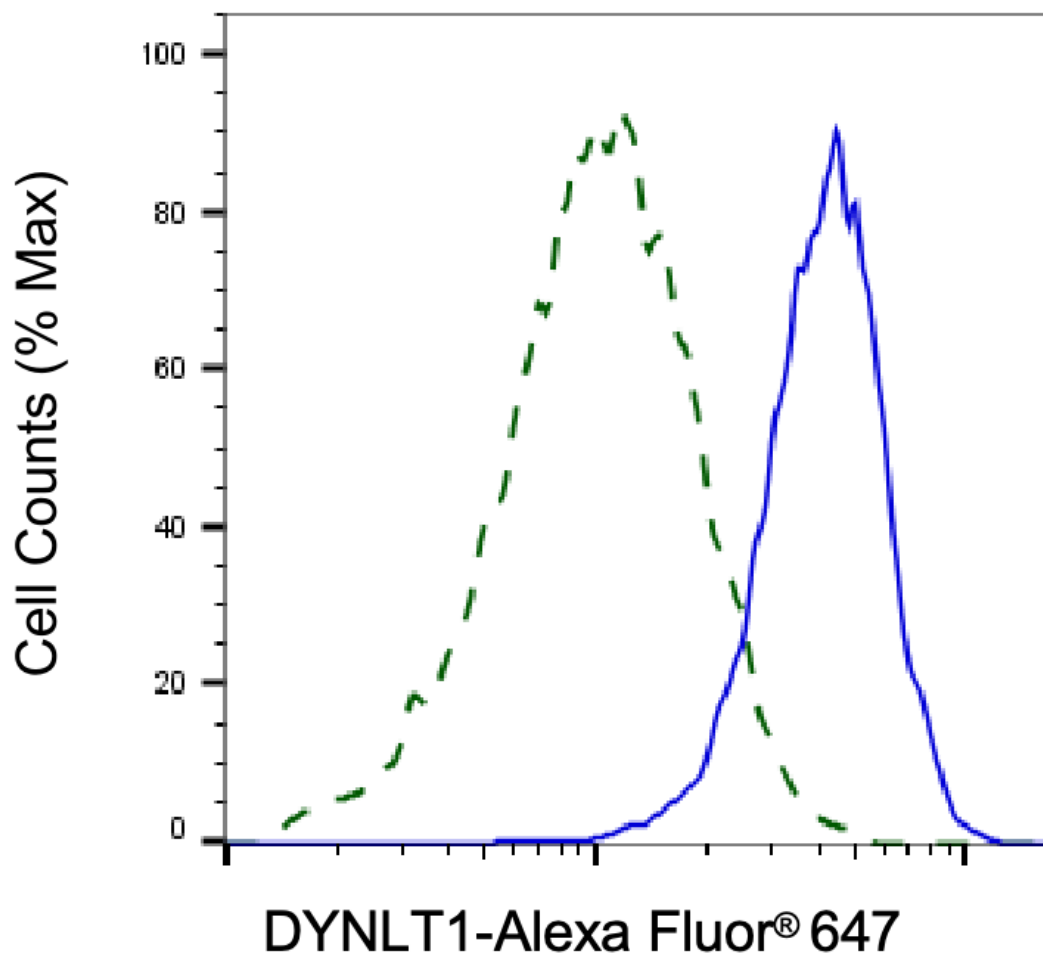
Copyright ©2025 Genuin Biotechnologies LLC

Western blotting analysis using anti-DYNLT1 antibody (Cat#65226). Total cell lysates (30 μ g) from various cell lines were loaded and separated by SDS-PAGE. The blot was incubated with anti-DYNLT1 antibody (Cat#65226, 1:5,000) and HRP-conjugated goat anti-rabbit secondary antibody (Cat#201, 1:20,000) respectively. Image was developed using FeQ™ ECL Substrate Kit (Cat#226).



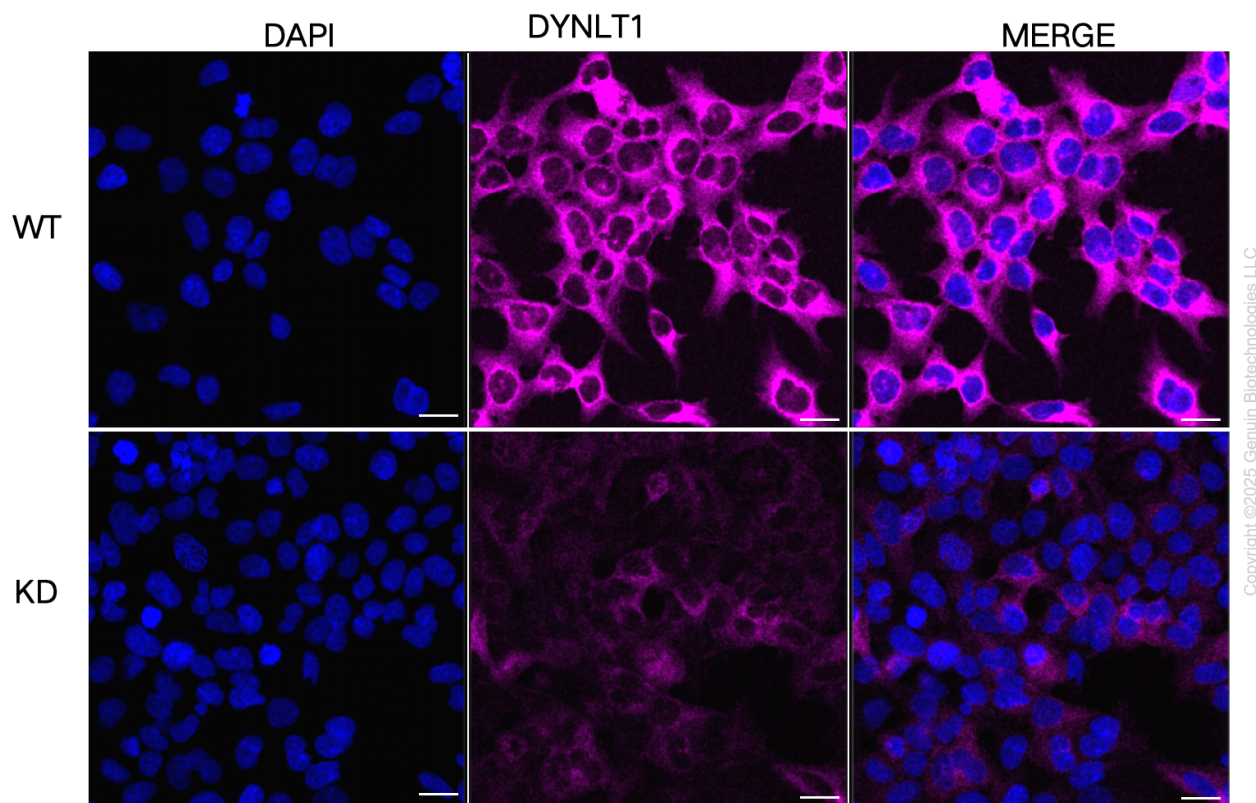
Copyright ©2025 Genuin Biotechnologies LLC

Western blotting analysis using anti-DYNLT1 antibody (Cat#65226). DYNLT1 expression in wild-type (WT) and DYNLT1 shRNA knockdown (KD) HeLa cells with 20 µg of total cell lysates. Hsp90 α serves as a loading control. The blot was incubated with anti-DYNLT1 antibody (Cat#65226, 1:5,000) and HRP-conjugated goat anti-rabbit secondary antibody (Cat#201, 1:20,000) respectively. Image was developed using NaQ™ ECL Substrate Kit (Cat#716).



Copyright ©2025 Genuin Biotechnologies LLC

Validation of DYNLT1 knockdown using flow cytometry. Wild-type(WT, Blue) and knockdown(KD, Green) HeLa cells were stained with anti-DYNLT1 antibody (Cat#65226, 1:2,000) and analyzed using BD flow cytometer.



Immunocytochemical staining of HeLa cells using anti-DYNLT1 antibody (Cat#65226, 1:1,000), Top panel: wild-type (WT); Bottom panel: DYNLT1 shRNA knockdown (KD). Nuclei were stained blue with DAPI; DYNLT1 was stained magenta with Alexa Fluor® 647. Scale bar, 20 μ m.