

KD-Validated Anti-CRTC2 Rabbit Monoclonal Antibody



Catalog #: 65227

Aliases

CRTC2; CREB Regulated Transcription Coactivator 2; TORC2; CREB-Regulated Transcription Coactivator 2; TORC-2; Transducer Of Regulated CAMP Response Element-Binding Protein (CREB) 2; Transducer Of Regulated CAMP Response Element-Binding Protein 2; Transducer Of CREB Protein 2

Background

Gene Name: CRTC2

NCBI Gene Entry: [200186](#)

UniProt Entry: [Q53ET0](#)

Application Information

Molecular Weight: Predicted, 73 kDa; observed, 75-80 kDa

Clonality: Rabbit monoclonal antibody

Clone ID: 25GB250

Species Reactivity: Human, mouse, rat

Applications Tested: Western blotting (WB), flow cytometry (FCM), immunocytochemistry (IC)

Immunogen

A synthesized peptide derived from human TORC2

Isotype

Rabbit IgG

Storage Buffer

Supplied in PBS (pH 7.4) containing 50% glycerol, and 0.02% sodium azide.

Storage

Store at -20 °C for one year.

Recommended Dilutions

Western Blotting (WB): 1:1,000-1:5,000

Flow Cytometry (FCM): 1:1,000

Immunocytochemistry (IC): 1:100-1:1,000

SUPPORT

SUPPORT@GENUINBIOTECH.COM
TEL: +1-540-855-7041

ORDERS

SALES@GENUINBIOTECH.COM
FAX: +1-540-855-7041

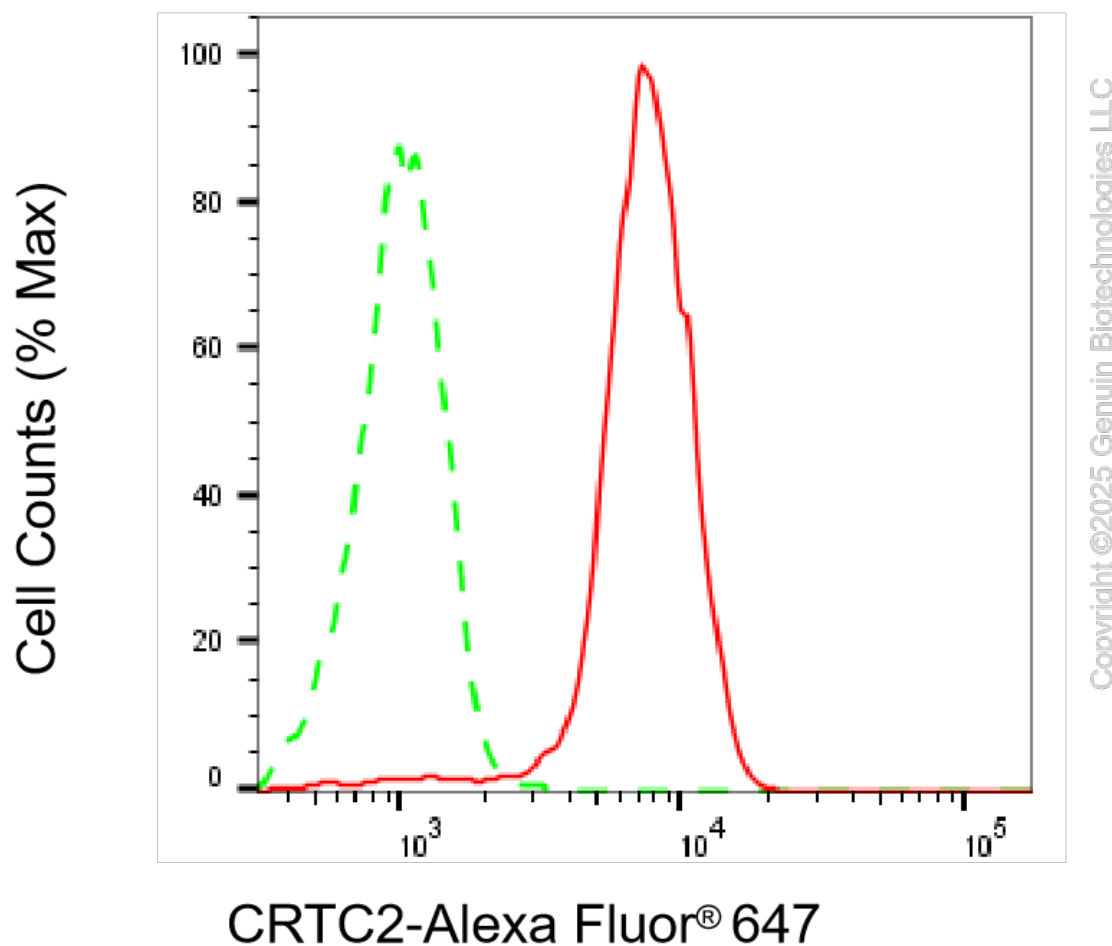
WWW.GENUINBIOTECH.COM

KD-Validated Anti-CRTC2 Rabbit Monoclonal Antibody

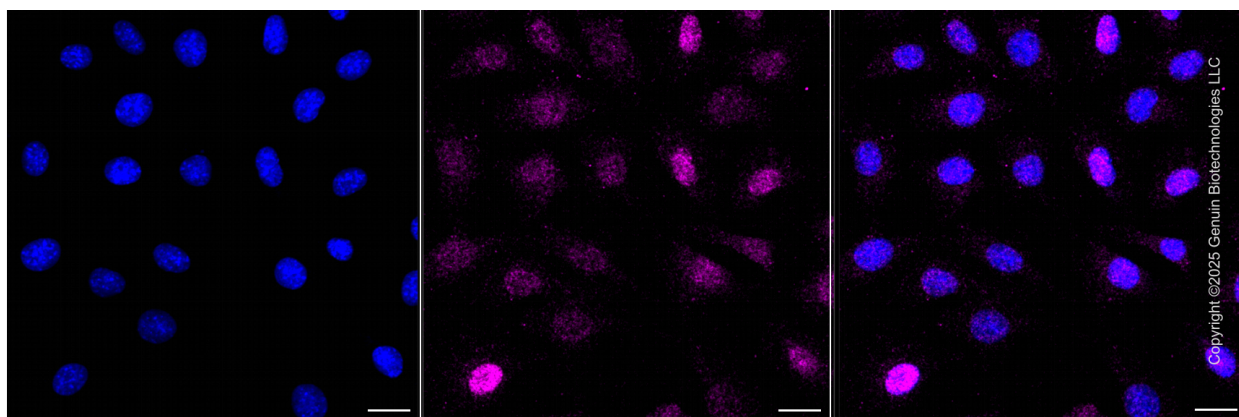
PAGE 2

Note: This product is for research use only.

Validation Data



Flow cytometric analysis of CRTC2 expression in C2C12 cells using anti-CRTC2 antibody (Cat#65227, 1:2,000). Green, isotype control; red, CRTC2.



SUPPORT

SUPPORT@GENUINBIOTECH.COM
TEL: +1-540-855-7041

ORDERS

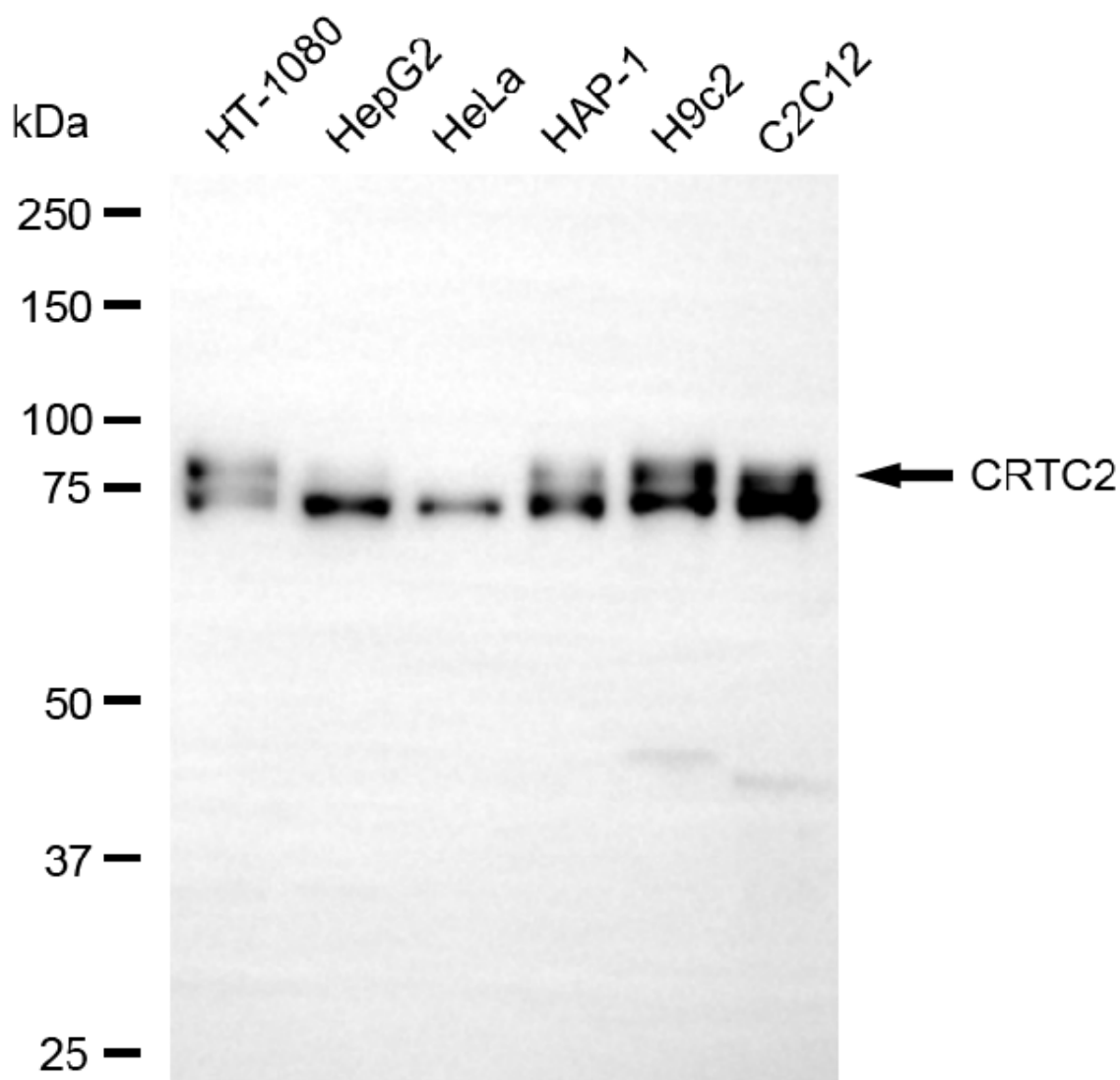
SALES@GENUINBIOTECH.COM
FAX: +1-540-855-7041

WWW.GENUINBIOTECH.COM

KD-Validated Anti-CRTC2 Rabbit Monoclonal Antibody

PAGE 3

Immunocytochemical staining of C2C12 cells with anti-CRTC2 antibody (Cat#65227, 1:1,000). Nuclei were stained blue with DAPI; CRTC2 was stained magenta with Alexa Fluor® 647. Images were taken using Leica stellaris 5. Protein abundance based on laser Intensity and smart gain: Medium. Scale bar, 20 μ m.



Copyright ©2025 Genuin Biotechnologies LLC

Western blotting analysis using anti-CRTC2 antibody (Cat#65227). Total cell lysates (30 μ g) from various cell lines were loaded and separated by SDS-PAGE. The blot was incubated with anti-CRTC2 antibody (Cat#65227, 1:5,000) and HRP-conjugated goat anti-rabbit secondary antibody (Cat#201, 1:20,000) respectively. Image was developed using FeQ™ ECL Substrate Kit (Cat#226).

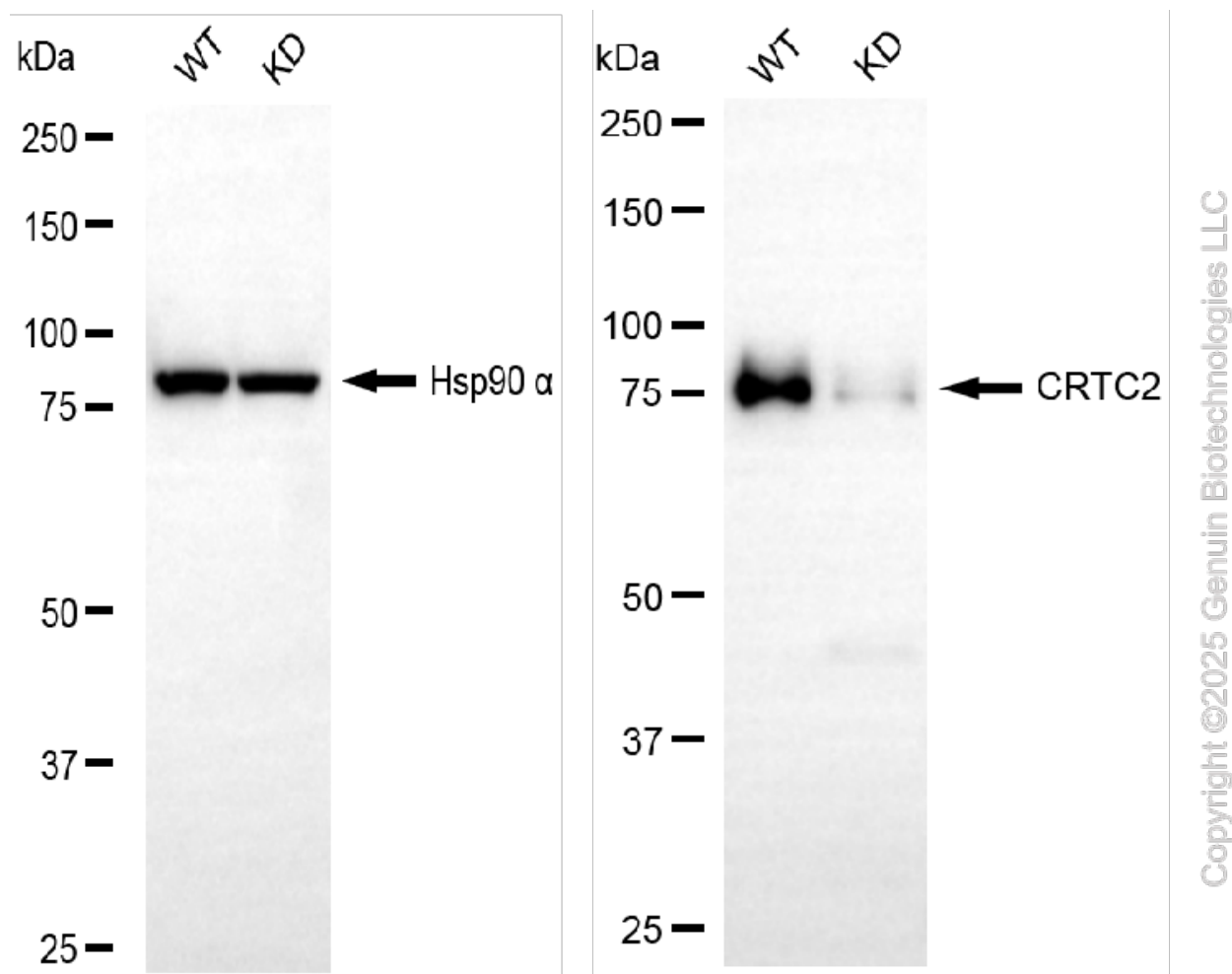
SUPPORT

SUPPORT@GENUINBIOTECH.COM
TEL: +1-540-855-7041

ORDERS

SALES@GENUINBIOTECH.COM
FAX: +1-540-855-7041

WWW.GENUINBIOTECH.COM



Western blotting analysis using anti-CRTC2 antibody (Cat#65227). CRTC2 expression in wild-type (WT) and CRTC2 knockdown (KD) 293T cells with 20 μ g of total cell lysates. Hsp90 α serves as a loading control. The blot was incubated with anti-CRTC2 antibody (Cat#65227, 1:5,000) and HRP-conjugated goat anti-rabbit secondary antibody (Cat#201, 1:20,000) respectively. Image was developed using FeQ™ ECL Substrate Kit (Cat#226).