

KD-Validated Anti-NAMPT Rabbit Monoclonal Antibody



Catalog #: 65228

Aliases

NAMPT; Nicotinamide Phosphoribosyltransferase; PBEF; Visfatin; PBEF1; Pre-B-Cell Colony-Enhancing Factor 1; Pre-B Cell-Enhancing Factor; EC 2.4.2.12; NAmPRTase; Pre-B-Cell Colony Enhancing Factor 1; 1110035O14Rik; Nampt; VF

Background

Gene Name: NAMPT

NCBI Gene Entry: [10135](#)

UniProt Entry: [P43490](#)

Application Information

Molecular Weight: Predicted, 56 kDa; observed, 50 kDa

Clonality: Rabbit monoclonal antibody

Clone ID: 25GB255

Species Reactivity: Human, mouse, rat

Applications Tested: Western blotting (WB), flow cytometry (FCM), immunocytochemistry (IC), immunohistochemistry (IHC)

Immunogen

A synthesized peptide derived from human Visfatin

Isotype

Rabbit IgG

Storage Buffer

Supplied in PBS (pH 7.4) containing 50% glycerol, and 0.02% sodium azide.

Storage

Store at -20 °C for one year.

Recommended Dilutions

Western Blotting (WB): 1:1,000-1:5,000

Flow Cytometry (FCM): 1:1,000

Immunocytochemistry (IC): 1:100-1:1,000

Immunohistochemistry (IHC): 1:100-1:200

SUPPORT

SUPPORT@GENUINBIOTECH.COM
TEL: +1-540-855-7041

ORDERS

SALES@GENUINBIOTECH.COM
FAX: +1-540-855-7041

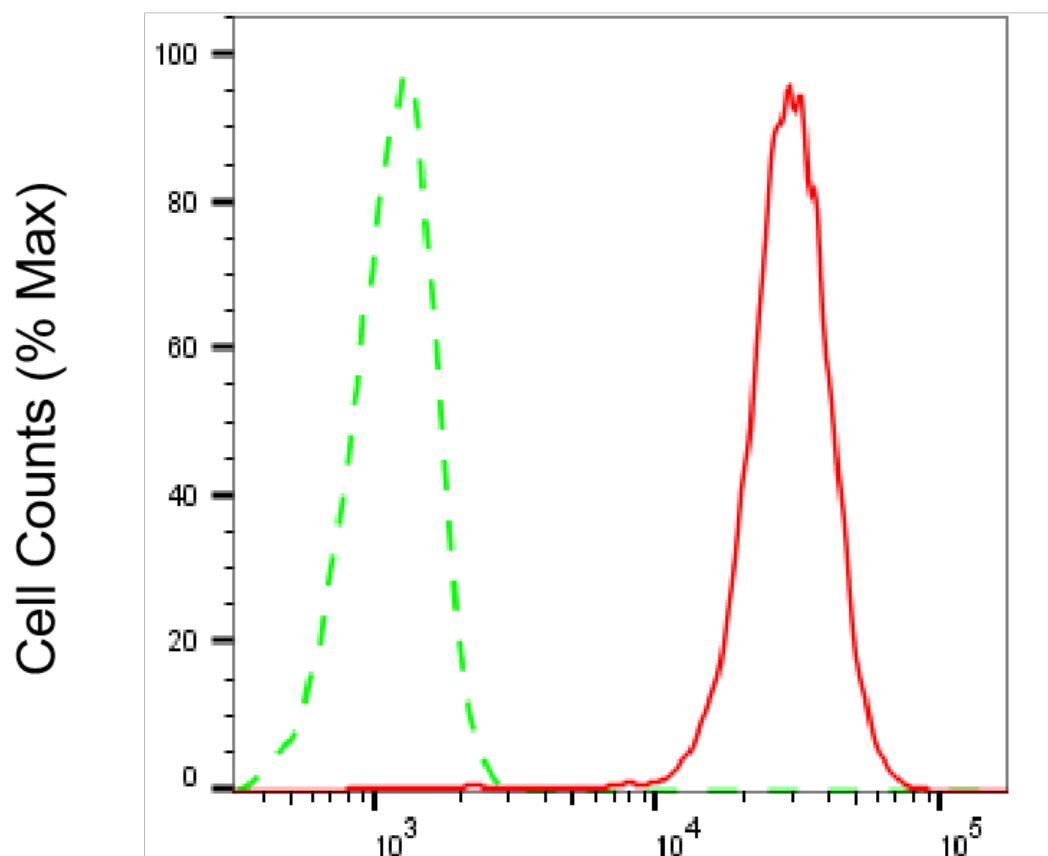
WWW.GENUINBIOTECH.COM

KD-Validated Anti-NAMPT Rabbit Monoclonal Antibody

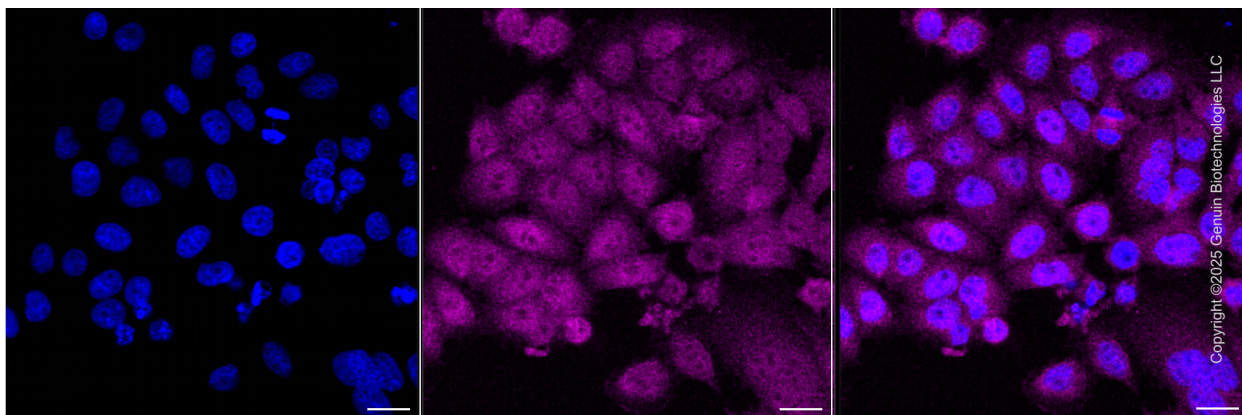
PAGE 2

Note: This product is for research use only.

Validation Data



Flow cytometric analysis of NAMPT expression in HepG2 cells using anti-NAMPT antibody (Cat#65228, 1:2,000). Green, isotype control; red, NAMPT.



SUPPORT

SUPPORT@GENUINBIOTECH.COM
TEL: +1-540-855-7041

ORDERS

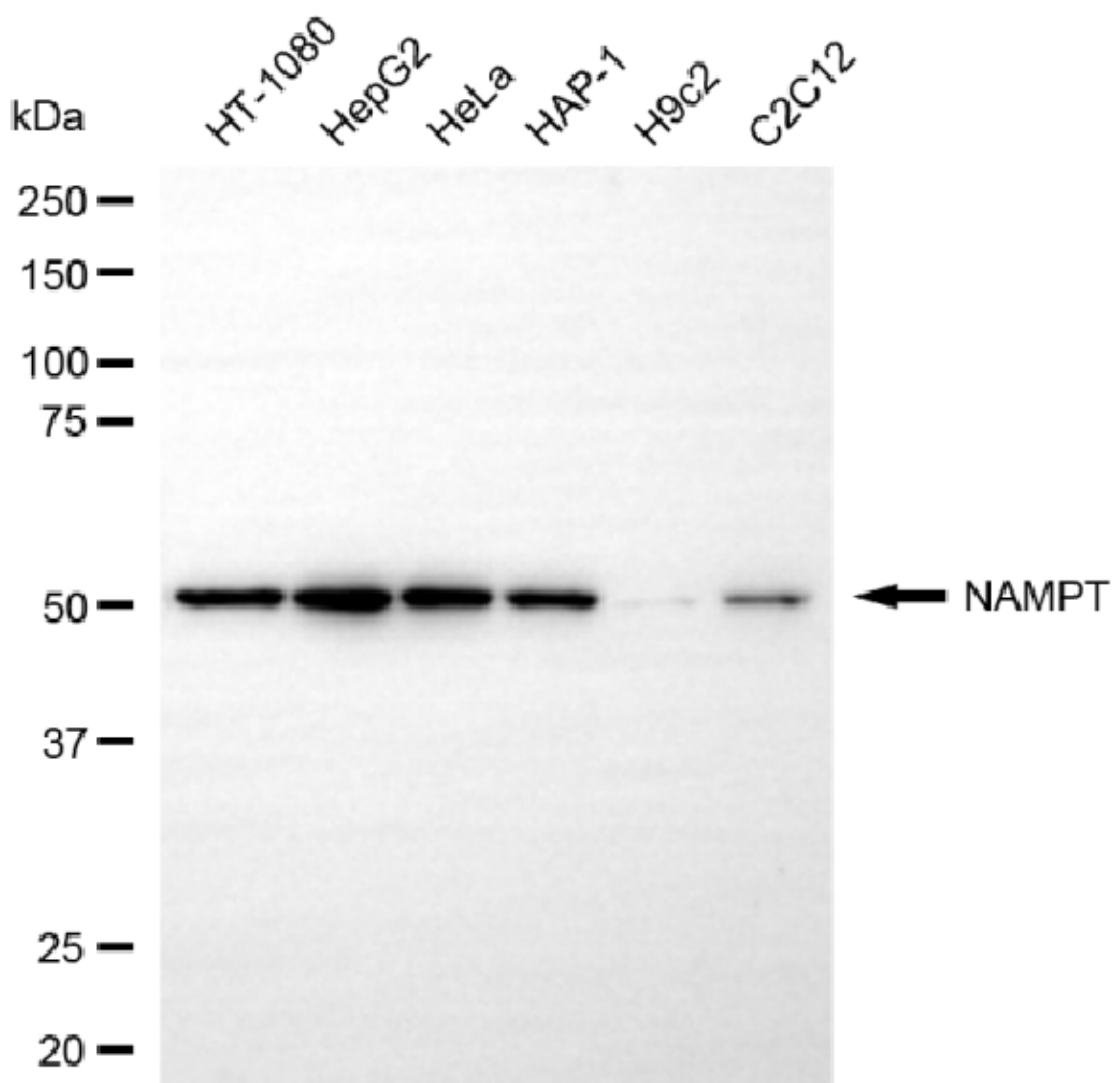
SALES@GENUINBIOTECH.COM
FAX: +1-540-855-7041

WWW.GENUINBIOTECH.COM

KD-Validated Anti-NAMPT Rabbit Monoclonal Antibody

PAGE 3

Immunocytochemical staining of HepG2 cells with anti-NAMPT antibody (Cat#65228, 1:1,000). Nuclei were stained blue with DAPI; NAMPT was stained magenta with Alexa Fluor® 647. Images were taken using Leica stellaris 5. Protein abundance based on laser Intensity and smart gain: Medium. Scale bar, 20 μ m.



Copyright ©2025 Genuin Biotechnologies LLC

Western blotting analysis using anti-NAMPT antibody (Cat#65228). Total cell lysates (30 μ g) from various cell lines were loaded and separated by SDS-PAGE. The blot was incubated with anti-NAMPT antibody (Cat#65228, 1:5,000) and HRP-conjugated goat anti-rabbit secondary antibody (Cat#201, 1:20,000) respectively. Image was developed using NaQ™ ECL Substrate Kit (Cat#716).

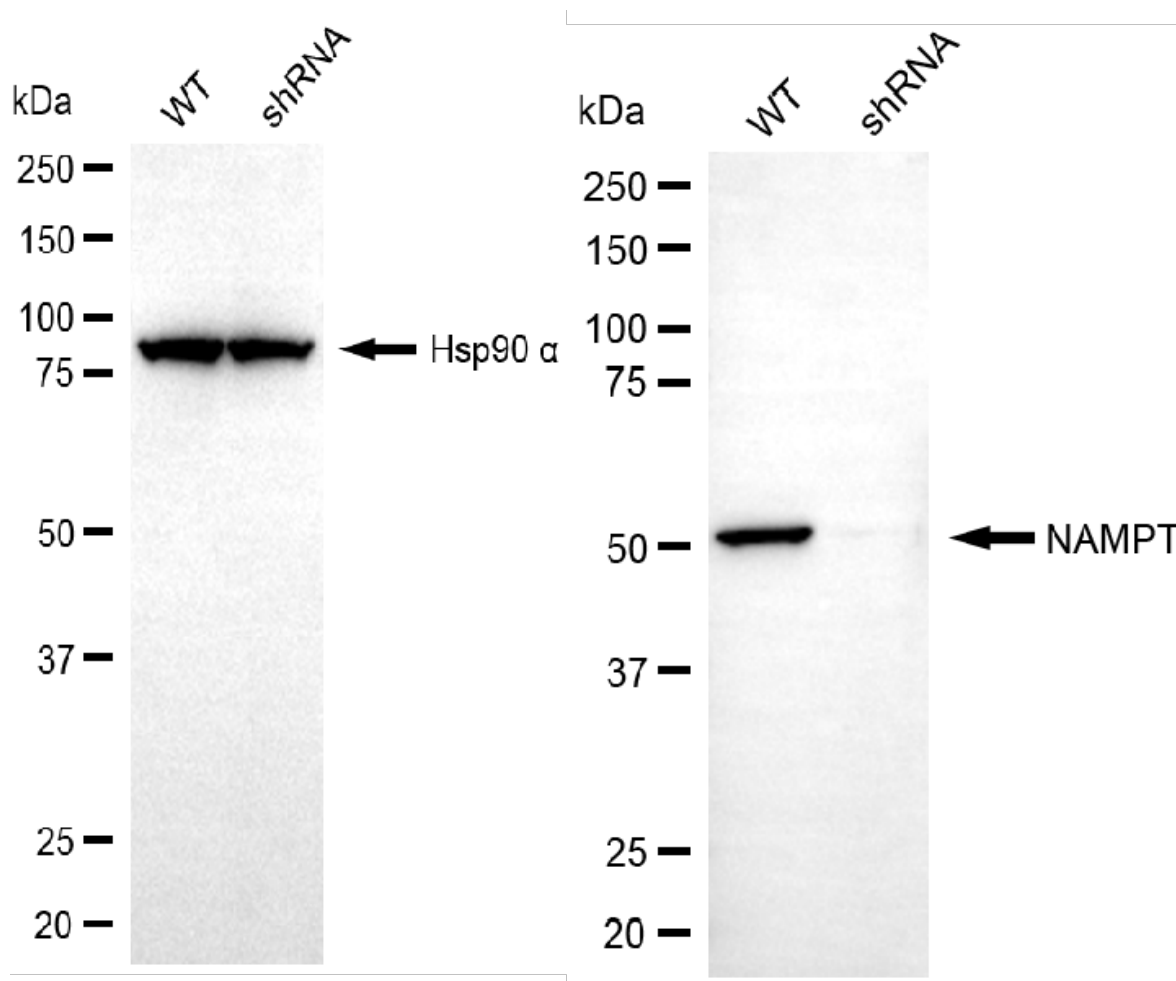
SUPPORT

SUPPORT@GENUINBIOTECH.COM
TEL: +1-540-855-7041

ORDERS

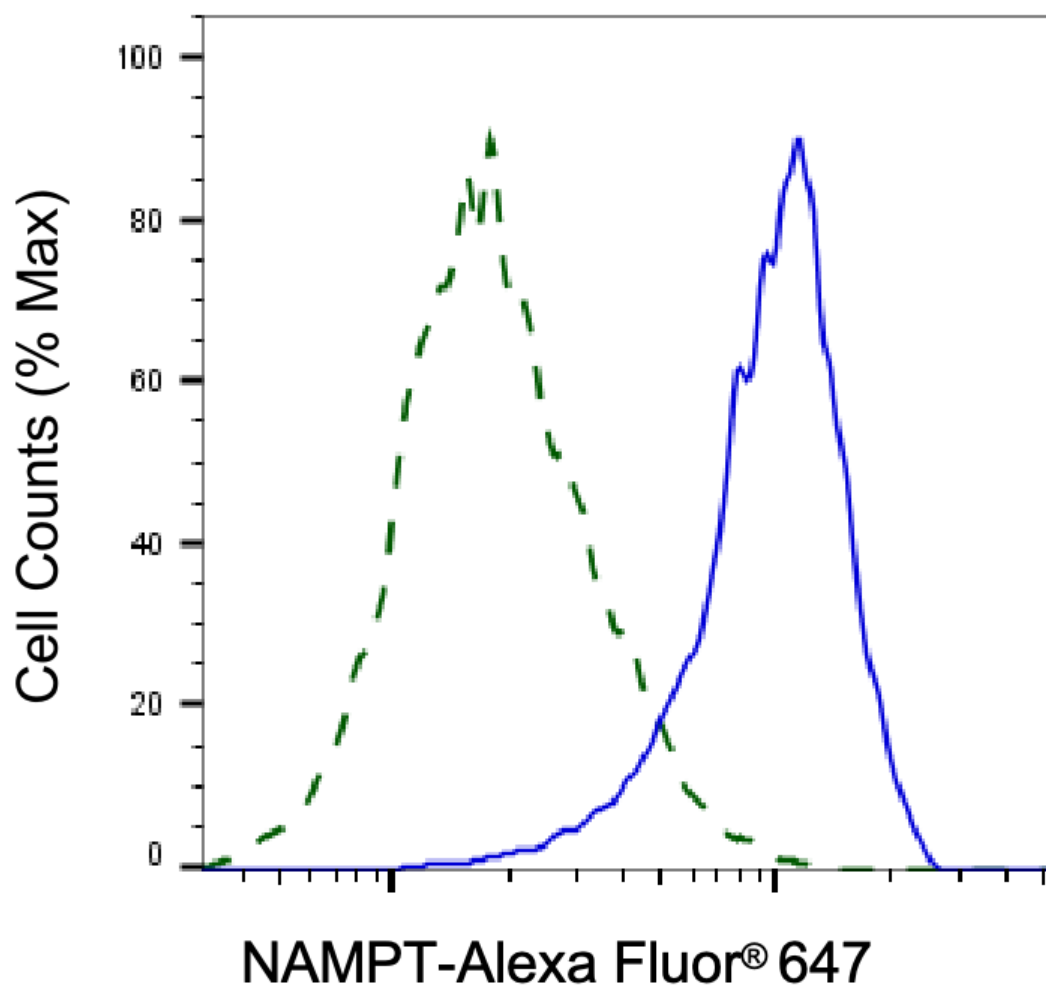
SALES@GENUINBIOTECH.COM
FAX: +1-540-855-7041

WWW.GENUINBIOTECH.COM



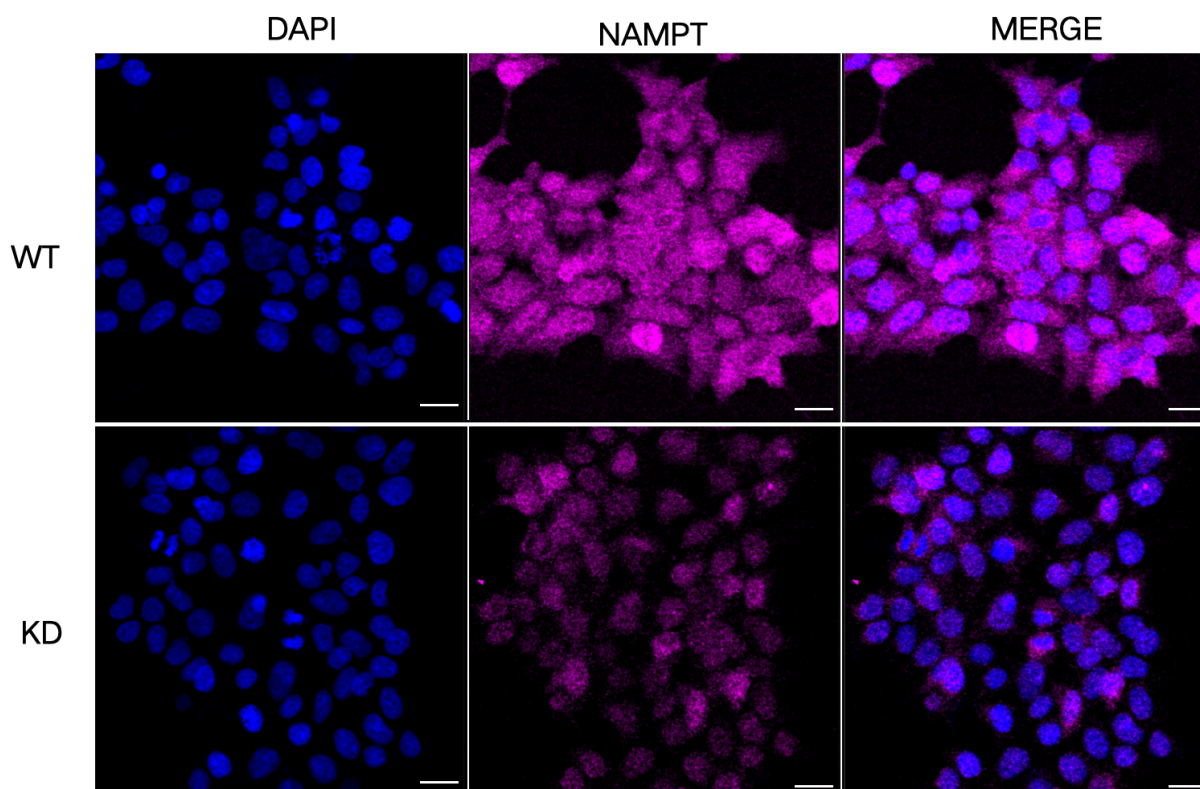
Copyright ©2025 Genuin Biotechnologies LLC

Western blotting analysis using anti-NAMPT antibody (Cat#65228). NAMPT expression in wild-type (WT) and NAMPT shRNA knockdown (KD) HeLa cells with 20 µg of total cell lysates. Hsp90 α serves as a loading control. The blot was incubated with anti-NAMPT antibody (Cat#65228, 1:5,000) and HRP-conjugated goat anti-rabbit secondary antibody (Cat#201, 1:20,000) respectively. Image was developed using FeQ™ ECL Substrate Kit (Cat#226).

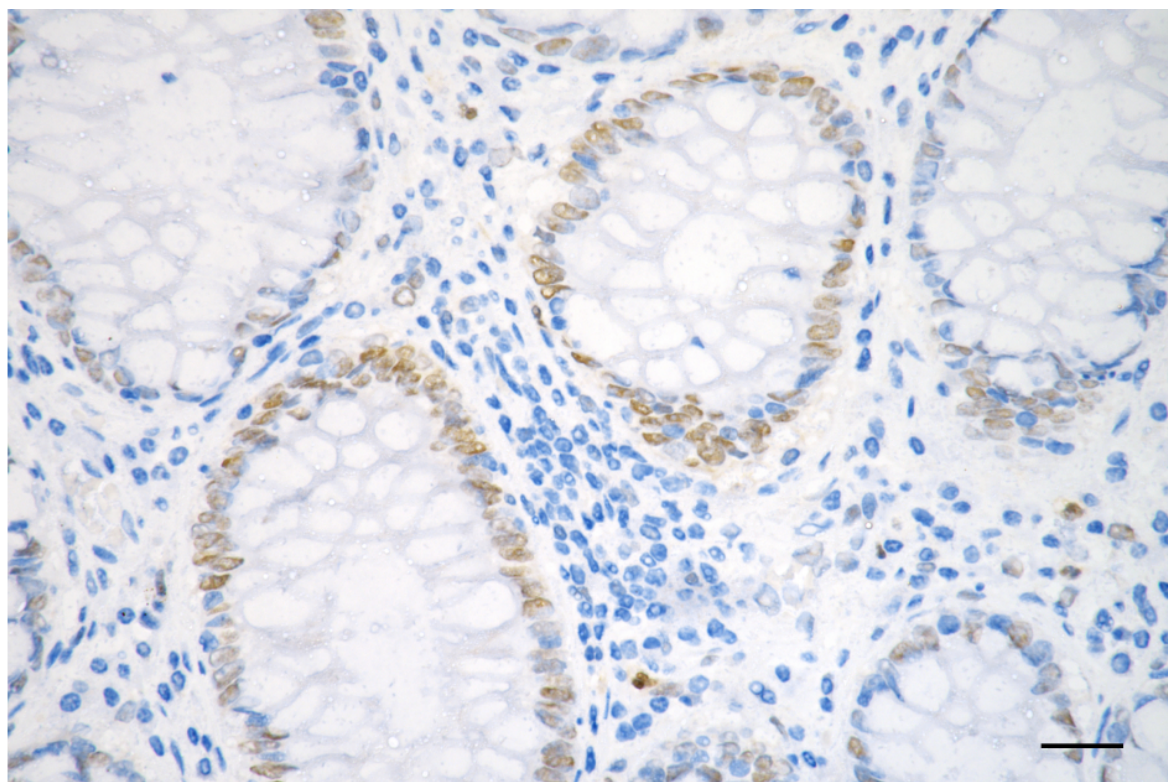


Copyright ©2025 Genuin Biotechnologies LLC

Validation of NAMPT knockdown using flow cytometry. Wild-type(WT, Blue) and knockdown(KD, Green) HeLa cells were stained with anti-NAMPT antibody (Cat#65228, 1:2,000) and analyzed using BD flow cytometer.



Immunocytochemical staining of HeLa cells using anti-NAMPT antibody (Cat#65228, 1:1,000), Top panel: wild-type (WT); Bottom panel: NAMPT shRNA knockdown (KD). Nuclei were stained blue with DAPI; NAMPT was stained magenta with Alexa Fluor® 647. Scale bar, 20 μ m.



SUPPORT

SUPPORT@GENUINBIOTECH.COM
TEL: +1-540-855-7041

ORDERS

SALES@GENUINBIOTECH.COM
FAX: +1-540-855-7041

WWW.GENUINBIOTECH.COM

KD-Validated Anti-NAMPT Rabbit Monoclonal Antibody

PAGE 7

Immunohistochemistry was performed on paraffin-embedded human sigmoid colon carcinoma using anti-NAMPT antibody (Cat#65228, 1:200). Antigen retrieval was done in sodium citrate buffer (pH 6.0). DAB was used for detection, with hematoxylin counterstaining. Images were acquired using a Nikon Ci-L Plus microscope (40× objective). Scale bar: 25 µm.

SUPPORT

SUPPORT@GENUINBIOTECH.COM
TEL: +1-540-855-7041

ORDERS

SALES@GENUINBIOTECH.COM
FAX: +1-540-855-7041

WWW.GENUINBIOTECH.COM