

KD-Validated Anti-NOTCH1 Recombinant Rabbit Monoclonal Antibody



Catalog #: 65264

Aliases

NOTCH1; Notch Receptor 1; Notch 1; TAN1; Translocation-Associated Notch Protein TAN-1; Neurogenic Locus Notch Homolog Protein 1; HN1; Notch (Drosophila) Homolog 1 (Translocation-Associated); Notch Homolog 1, Translocation-Associated (Drosophila); Notch Homolog 1, Translocation-Associated; EC 3.4.21.68; EC 2.1.2.11; AOVD1; AOS5

Background

Gene Name: NOTCH1

NCBI Gene Entry: [4851](#)

UniProt Entry: [P46531](#)

Application Information

Molecular Weight: Predicted, 125 kDa; observed, 125 kDa

Clonality: Rabbit monoclonal antibody

Clone ID: 25GB425

Species Reactivity: Human, mouse, rat

Applications Tested: Western blotting (WB), flow cytometry (FCM)

Immunogen

A synthesized peptide derived from human Notch 1

Isotype

Rabbit IgG

Storage Buffer

Supplied in PBS (pH 7.4) containing 50% glycerol, and 0.02% sodium azide.

Storage

Store at -20 °C for one year.

Recommended Dilutions

Western Blotting (WB): 1:1,000-1:5,000

Flow Cytometry (FCM): 1:2,000

Note: This product is for research use only.

SUPPORT

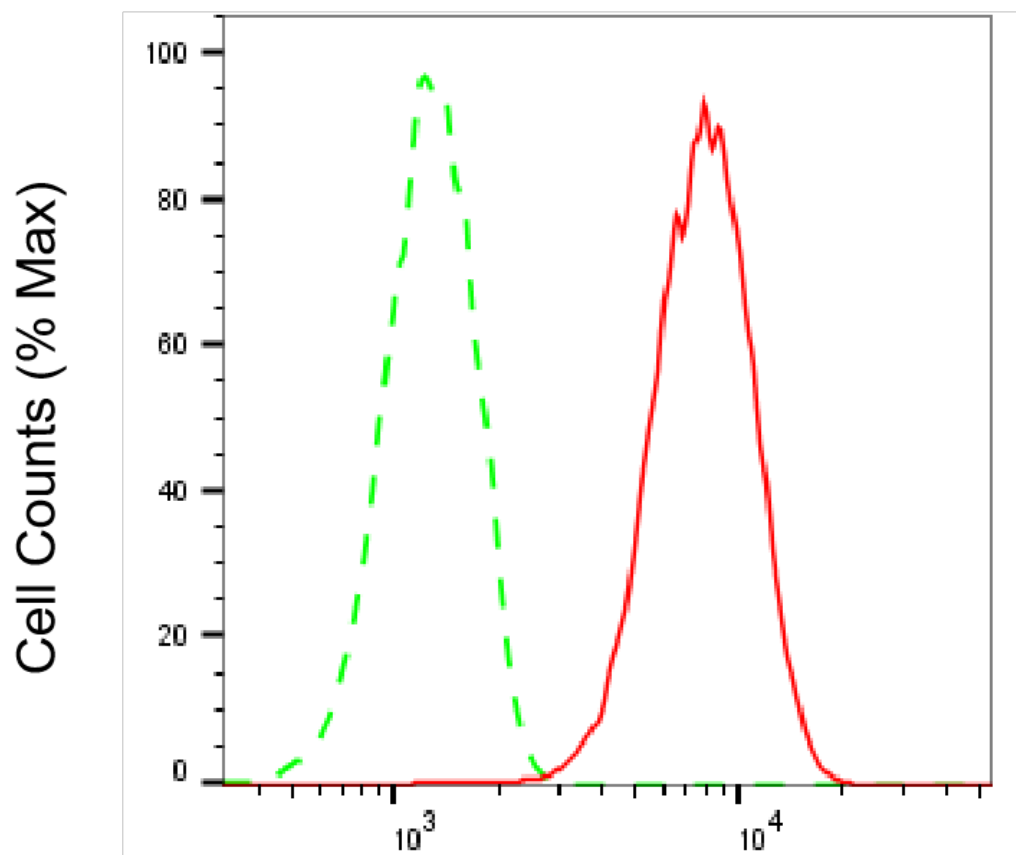
SUPPORT@GENUINBIOTECH.COM
TEL: +1-540-855-7041

ORDERS

SALES@GENUINBIOTECH.COM
FAX: +1-540-855-7041

WWW.GENUINBIOTECH.COM

Validation Data



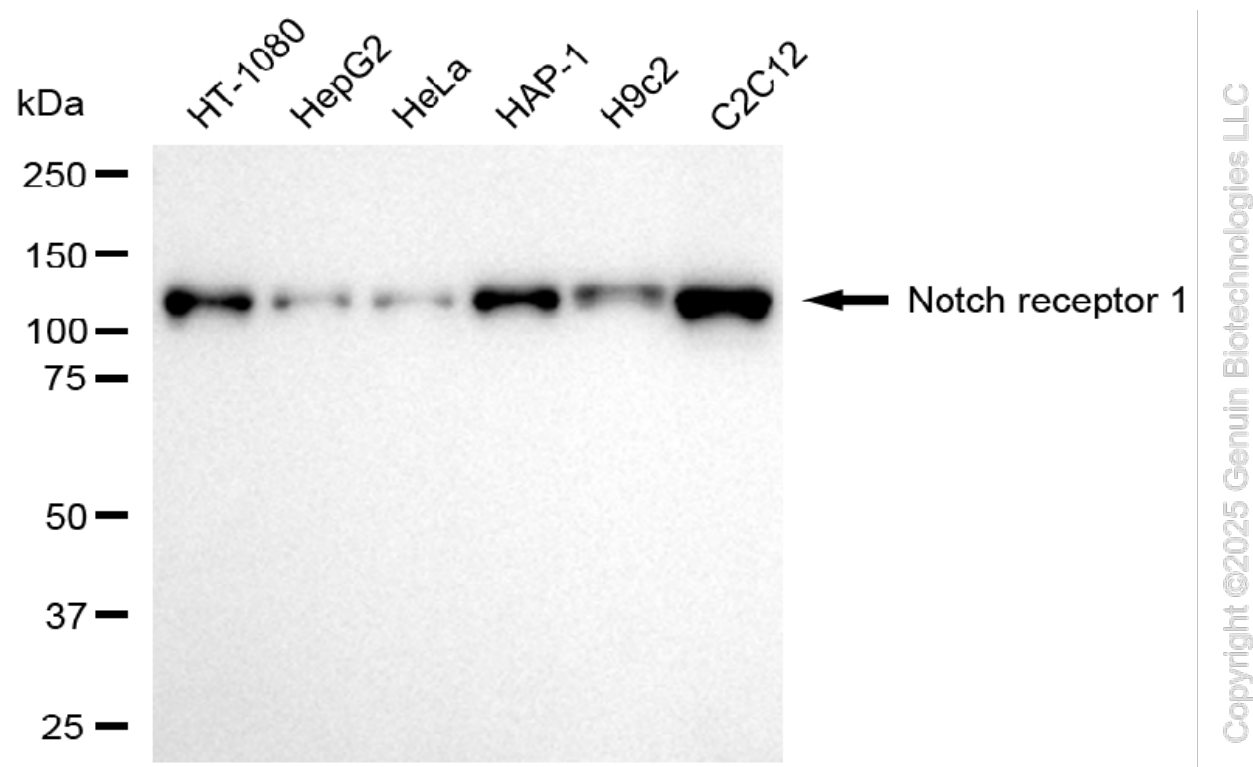
Copyright ©2025 Genuin Biotechnologies LLC

Notch receptor 1-Alexa Fluor® 647

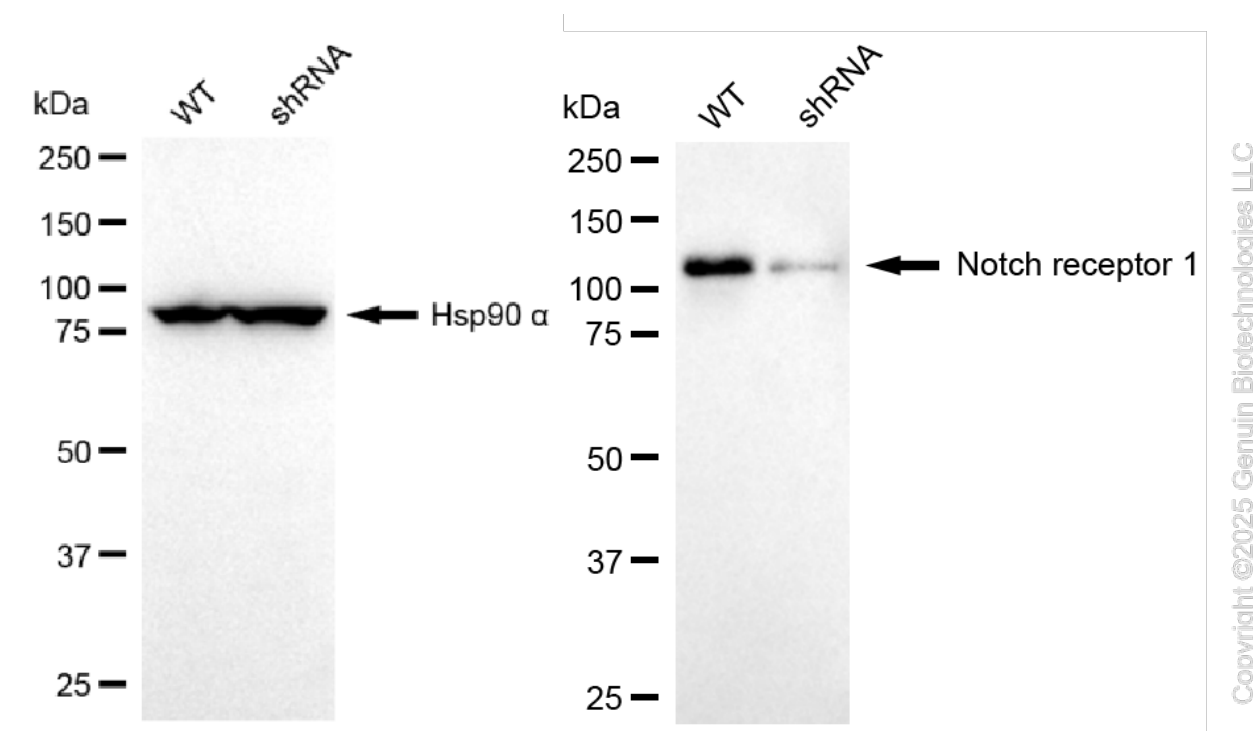
Flow cytometric analysis of Notch receptor 1 expression in C2C12 cells using anti-Notch receptor 1 antibody (Cat#65264, 1:2,000). Green, isotype control; red, Notch receptor 1.

KD-Validated Anti-NOTCH1 Recombinant Rabbit Monoclonal Antibody

PAGE 3



Western blotting analysis using anti-notch receptor 1 antibody (Cat#65264). Total cell lysates (30 µg) from various cell lines were loaded and separated by SDS-PAGE. The blot was incubated with anti-notch receptor 1 antibody (Cat#65264, 1:5,000) and HRP-conjugated goat anti-rabbit secondary antibody (Cat#201, 1:20,000) respectively. Image was developed using NaQ™ ECL Substrate Kit (Cat#716).



SUPPORT

SUPPORT@GENUINBIOTECH.COM
TEL: +1-540-855-7041

ORDERS

SALES@GENUINBIOTECH.COM
FAX: +1-540-855-7041

WWW.GENUINBIOTECH.COM

KD-Validated Anti-NOTCH1 Recombinant Rabbit Monoclonal Antibody

PAGE 4

Western blotting analysis using anti-notch receptor 1 antibody (Cat#65264). Notch receptor 1 expression in wild-type (WT) and notch receptor 1 (NOTCH1) shRNA knockdown (KD) HeLa cells with 20 µg of total cell lysates. Hsp90 α serves as a loading control. The blot was incubated with anti-notch receptor 1 antibody (Cat#65264, 1:5,000) and HRP-conjugated goat anti-rabbit secondary antibody (Cat#201, 1:20,000) respectively. Image was developed using NaQ™ ECL Substrate Kit (Cat#716).

SUPPORT

SUPPORT@GENUINBIOTECH.COM
TEL: +1-540-855-7041

ORDERS

SALES@GENUINBIOTECH.COM
FAX: +1-540-855-7041

WWW.GENUINBIOTECH.COM