

# KD-Validated Anti-HEXIM1 Mouse Monoclonal Antibody



**Catalog #: 65265**

## Aliases

HEXIM1; HEXIM P-TEFb Complex Subunit 1; HIS1; MAQ1; EDG1; Hexamethylene Bis-Acetamide-Inducible Protein 1; Hexamethylene Bisacetamide Inducible 1; Estrogen Down-Regulated Gene 1 Protein; Cardiac Lineage Protein 1; Menage A Quatre Protein 1; Protein HEXIM1; CLP-1; CLP1; Hexamethylene-Bis-Acetamide-Inducible Transcript 1; Hexamethylene Bisacetamide-Inducible Protein; Hexamethylene Bis-Acetamide Inducible 1; Hexamethylene Bis-Acetamide Inducible 1; Menage A Quatre 1; HMBA-Inducible

## Background

Gene Name: HEXIM1

NCBI Gene Entry: [10614](#)

UniProt Entry: [O94992](#)

## Application Information

Molecular Weight: Predicted, 41 kDa; observed, 63 kDa

Clonality: Mouse monoclonal antibody

Clone ID: 25GB650

Species Reactivity: Human, mouse, rat

Applications Tested: Western blotting (WB), flow cytometry (FCM), immunocytochemistry (IC)

## Immunogen

Recombinant protein of human HEXIM1

## Isotype

Mouse IgG2a

## Storage Buffer

Supplied in PBS (pH 7.4) containing 50% glycerol, and 0.02% sodium azide.

## Storage

Store at -20 °C for one year.

## Recommended Dilutions

Western Blotting (WB): 1:400-1:2,000

Flow Cytometry (FCM): 1:2,000

Immunocytochemistry (IC): 1:100-1:1,000

---

### SUPPORT

SUPPORT@GENUINBIOTECH.COM  
TEL: +1-540-855-7041

### ORDERS

SALES@GENUINBIOTECH.COM  
FAX: +1-540-855-7041

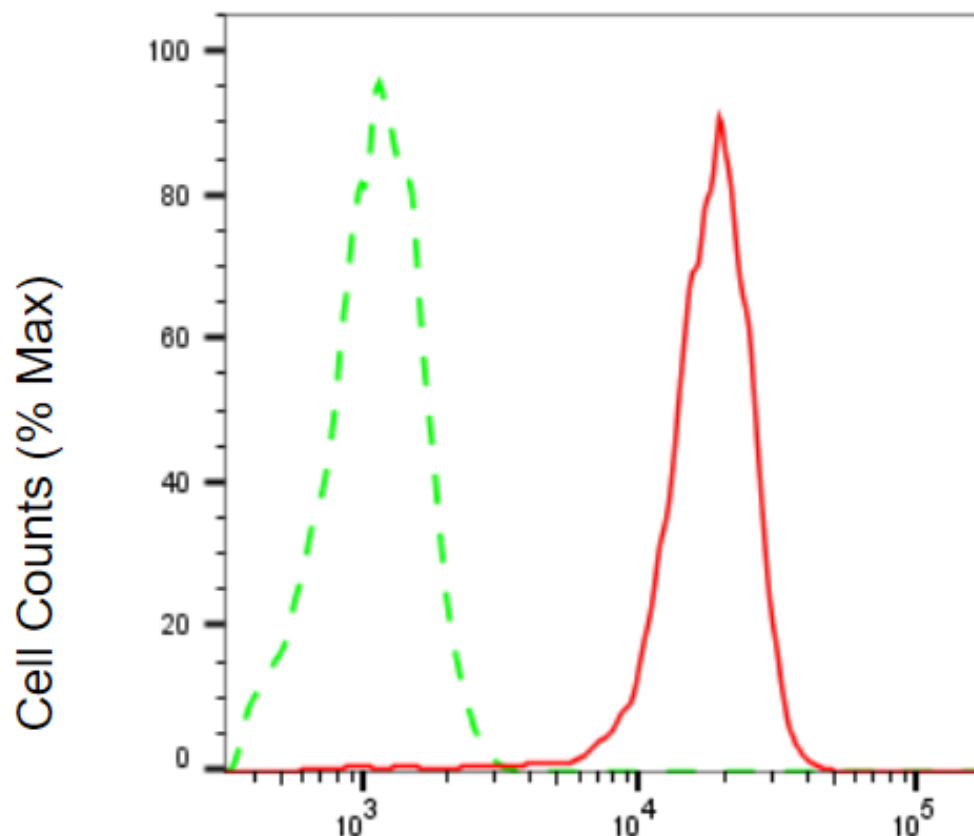
[WWW.GENUINBIOTECH.COM](http://WWW.GENUINBIOTECH.COM)

## KD-Validated Anti-HEXIM1 Mouse Monoclonal Antibody

PAGE 2

**Note:** This product is for research use only.

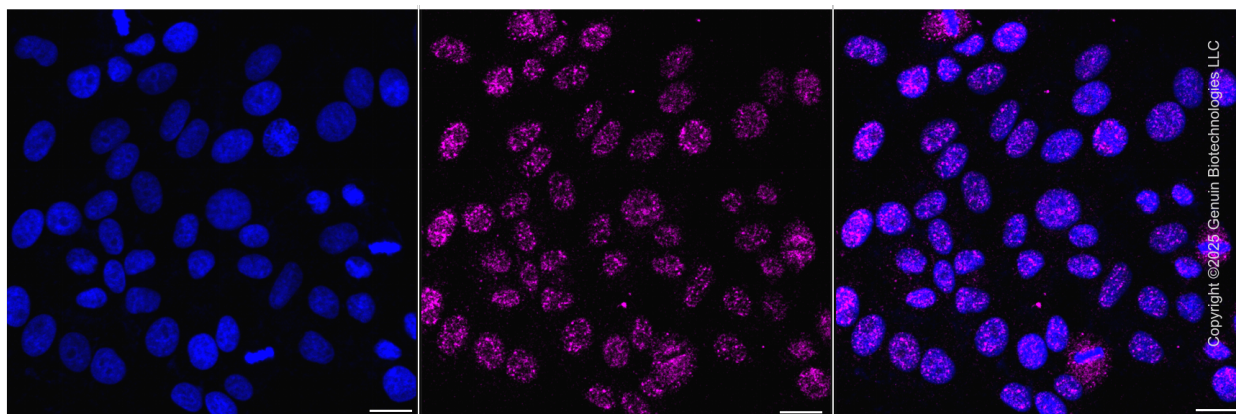
### Validation Data



Copyright ©2025 Genuin Biotechnologies LLC

HEXIM1-Alexa Fluor® 647

Flow cytometric analysis of HEXIM1 expression in HepG2 cells using anti-HEXIM1 antibody (Cat#65265, 1:2,000). Green, isotype control; red, HEXIM1.



#### SUPPORT

SUPPORT@GENUINBIOTECH.COM  
TEL: +1-540-855-7041

#### ORDERS

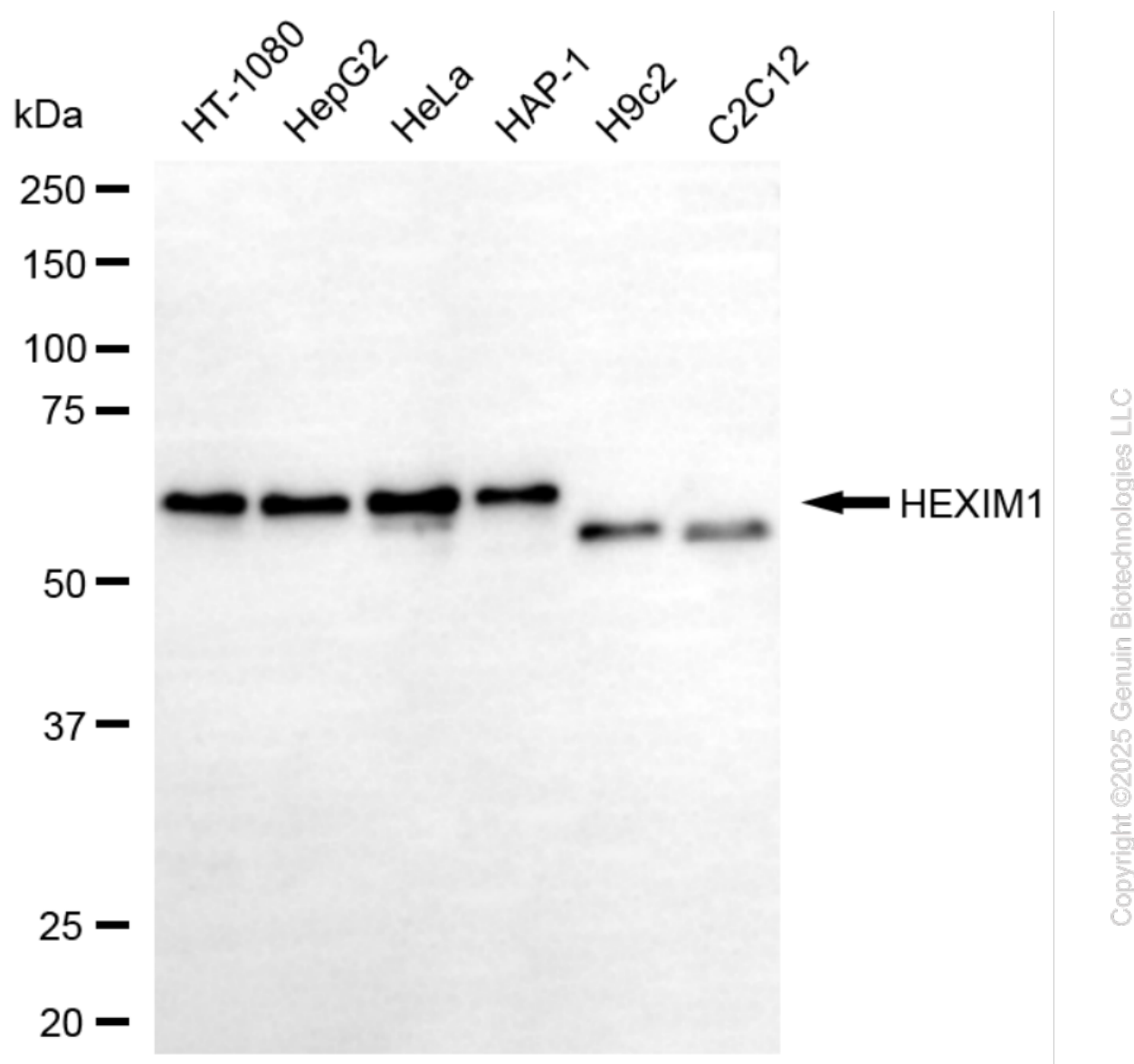
SALES@GENUINBIOTECH.COM  
FAX: +1-540-855-7041

WWW.GENUINBIOTECH.COM

## KD-Validated Anti-HEXIM1 Mouse Monoclonal Antibody

PAGE 3

Immunocytochemical staining of C2C12 cells with anti-HEXIM1 antibody (Cat#65265, 1:1,000). Nuclei were stained blue with DAPI; HEXIM1 was stained magenta with Alexa Fluor® 647. Images were taken using Leica stellaris 5. Protein abundance based on laser Intensity and smart gain: Low. Scale bar, 20  $\mu$ m.



Western blotting analysis using anti-HEXIM1 antibody (Cat#65265). Total cell lysates (30  $\mu$ g) from various cell lines were loaded and separated by SDS-PAGE. The blot was incubated with anti-HEXIM1 antibody (Cat#65265, 1:2,000) and HRP-conjugated goat anti-mouse secondary antibody (Cat#101, 1:20,000) respectively. Image was developed using FeQ™ ECL Substrate Kit (Cat#226).

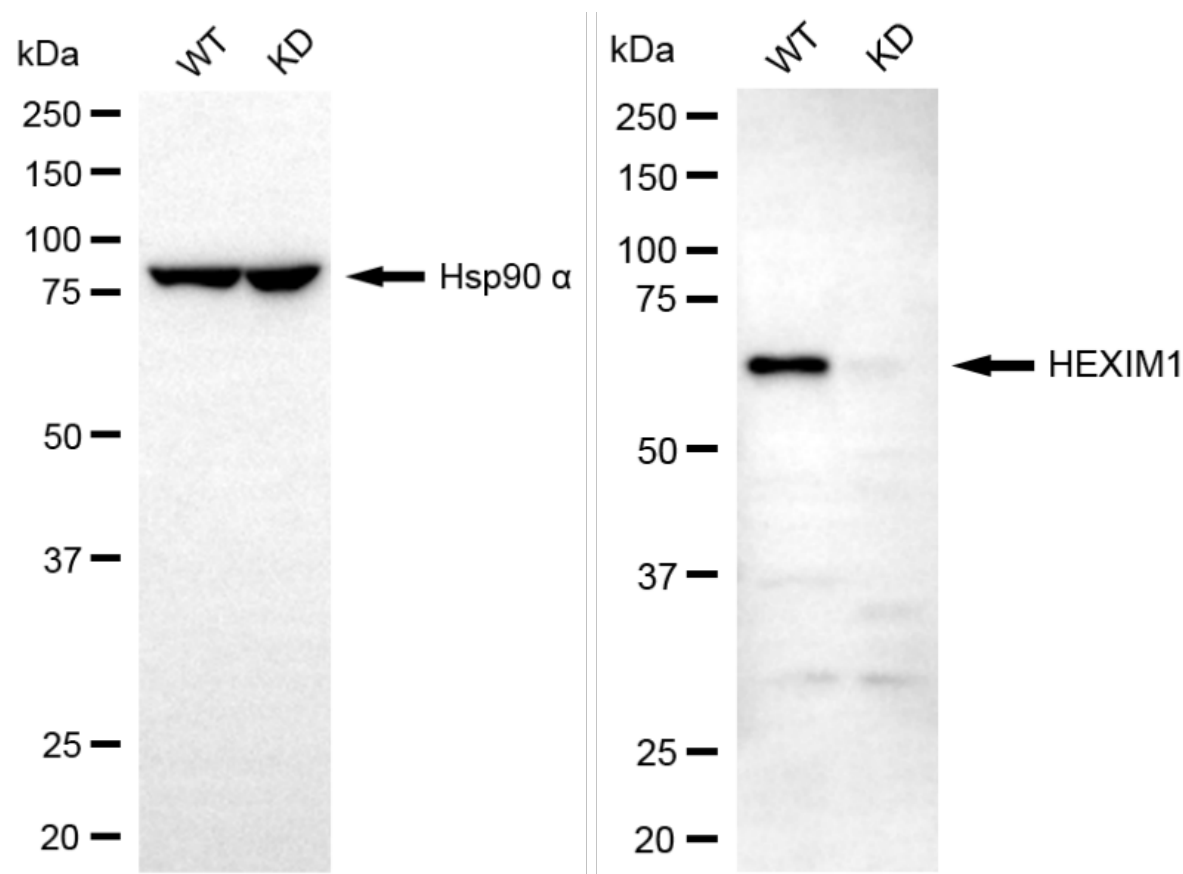
### SUPPORT

SUPPORT@GENUINBIOTECH.COM  
TEL: +1-540-855-7041

### ORDERS

SALES@GENUINBIOTECH.COM  
FAX: +1-540-855-7041

WWW.GENUINBIOTECH.COM



Copyright ©2025 Genuin Biotechnologies LLC

Western blotting analysis using anti-HEXIM1 antibody (Cat#65265). HEXIM1 expression in wild-type (WT) and HEXIM1 knockdown (KD) HSHC cells with 20 µg of total cell lysates. Hsp90 α serves as a loading control. The blot was incubated with anti-HEXIM1 antibody (Cat#65265, 1:2,000) and HRP-conjugated goat anti-mouse secondary antibody (Cat#101, 1:20,000) respectively. Image was developed using FeQ™ ECL Substrate Kit (Cat#226).