

# KD-Validated Anti-NEDD9 Mouse Monoclonal Antibody



**Catalog #: 65269**

## Aliases

NEDD9; Neural Precursor Cell Expressed, Developmentally Down-Regulated 9; CAS-L; CASS2; HEF1; Cas Scaffolding Protein Family Member 2; Neural Precursor Cell Expressed Developmentally Down-Regulated Protein 9; Renal Carcinoma Antigen NY-REN-12; Enhancer Of Filamentation 1; CASL; Crk-Associated Substrate Related Protein Cas-L; CRK-Associated Substrate-Related Protein; Enhancer Of Filamentation 1 P55; P130Cas-Related Protein; Cas-Like Docking; Cas-Like; NEDD-9; CAS2; CasL; P105

## Background

Gene Name: NEDD9

NCBI Gene Entry: [4739](#)

UniProt Entry: [Q14511](#)

## Application Information

Molecular Weight: Predicted, 93 kDa; observed, 93-115 kDa

Clonality: Mouse monoclonal antibody

Clone ID: 25GB670

Species Reactivity: Human, mouse, rat

Applications Tested: Western blotting (WB), flow cytometry (FCM)

## Immunogen

Recombinant protein of human NEDD9

## Isotype

Mouse IgG2a

## Storage Buffer

Supplied in PBS (pH 7.4) containing 50% glycerol, and 0.02% sodium azide.

## Storage

Store at -20 °C for one year.

## Recommended Dilutions

Western Blotting (WB): 1:400-1:2,000

Flow Cytometry (FCM): 1:2,000

---

### SUPPORT

SUPPORT@GENUINBIOTECH.COM  
TEL: +1-540-855-7041

### ORDERS

SALES@GENUINBIOTECH.COM  
FAX: +1-540-855-7041

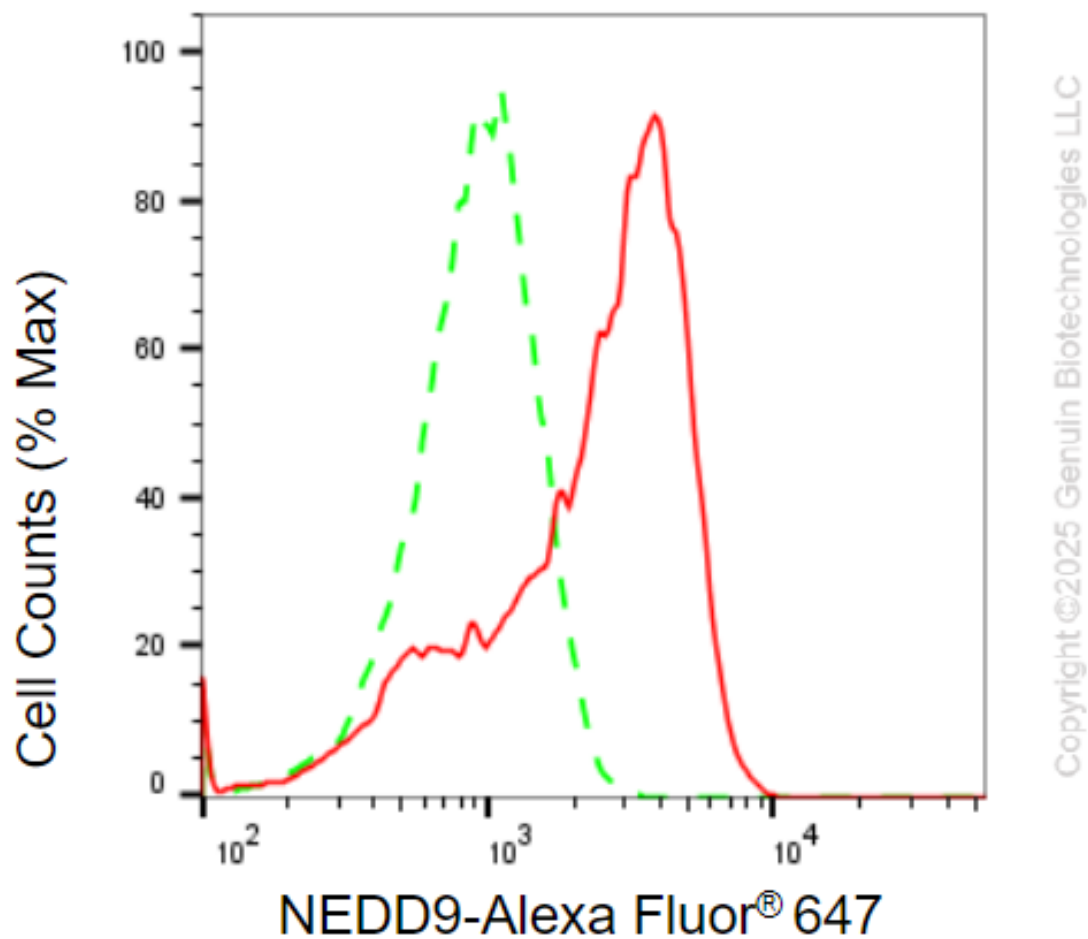
[WWW.GENUINBIOTECH.COM](http://WWW.GENUINBIOTECH.COM)

## KD-Validated Anti-NEDD9 Mouse Monoclonal Antibody

PAGE 2

**Note:** This product is for research use only.

### Validation Data



Flow cytometric analysis of NEDD9 expression in H9c2 cells using anti-NEDD9 antibody (Cat#65269, 1:2,000). Green, isotype control; red, NEDD9.

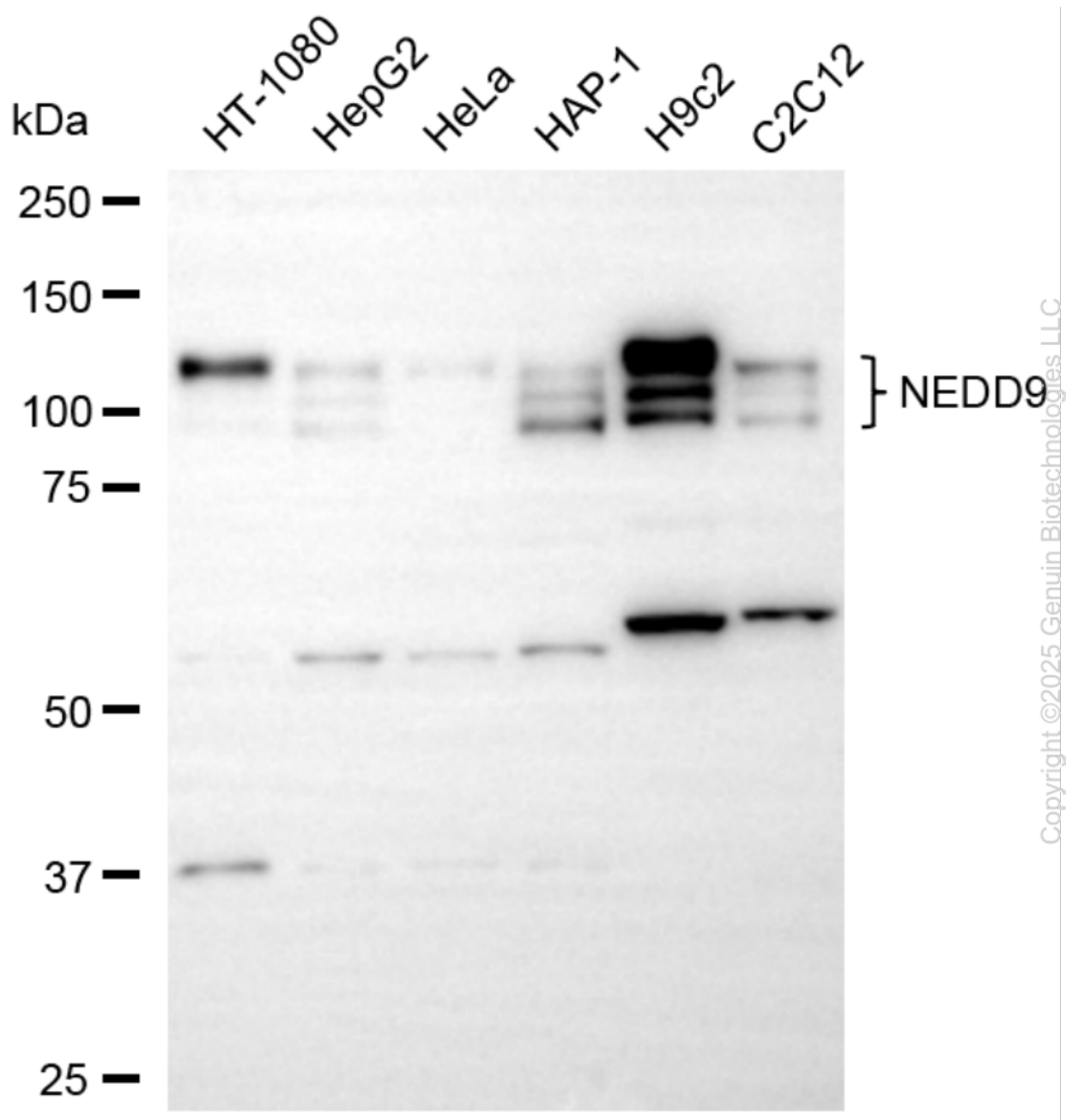
#### SUPPORT

SUPPORT@GENUINBIOTECH.COM  
TEL: +1-540-855-7041

#### ORDERS

SALES@GENUINBIOTECH.COM  
FAX: +1-540-855-7041

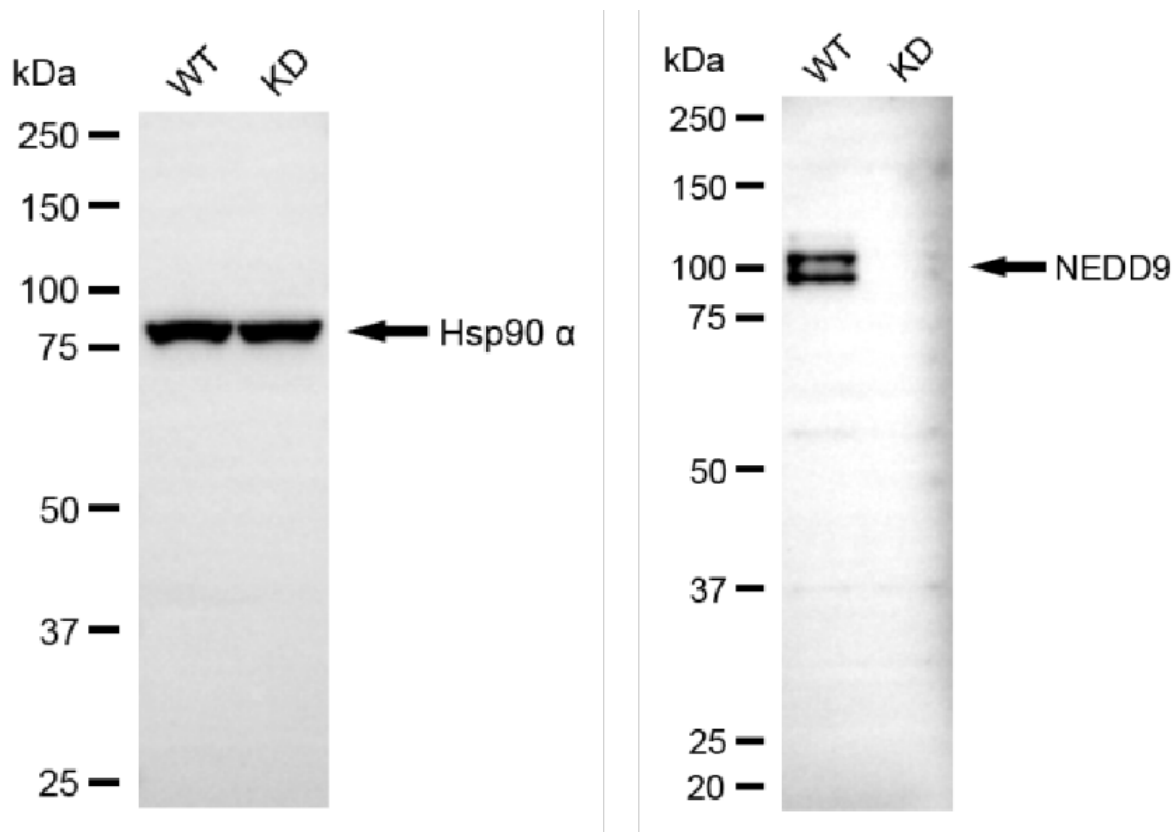
[WWW.GENUINBIOTECH.COM](http://WWW.GENUINBIOTECH.COM)



Western blotting analysis using anti-NEDD9 antibody (Cat#65269). Total cell lysates (30 µg) from various cell lines were loaded and separated by SDS-PAGE. The blot was incubated with anti-NEDD9 antibody (Cat#65269, 1:2,000) and HRP-conjugated goat anti-mouse secondary antibody (Cat#101, 1:20,000) respectively. Image was developed using FeQ™ ECL Substrate Kit (Cat#226).

## KD-Validated Anti-NEDD9 Mouse Monoclonal Antibody

PAGE 4



Western blotting analysis using anti-NEDD9 antibody (Cat#65269). NEDD9 expression in wild-type (WT) and NEDD9 knockdown (KD) HSHC cells with 20 µg of total cell lysates. Hsp90 α serves as a loading control. The blot was incubated with anti-NEDD9 antibody (Cat#65269, 1:2,000) and HRP-conjugated goat anti-mouse secondary antibody (Cat#101, 1:20,000) respectively. Image was developed using FeQ™ ECL Substrate Kit (Cat#226).

### SUPPORT

SUPPORT@GENUINBIOTECH.COM  
TEL: +1-540-855-7041

### ORDERS

SALES@GENUINBIOTECH.COM  
FAX: +1-540-855-7041

WWW.GENUINBIOTECH.COM