

KD-Validated Anti-KPNA1 Mouse Monoclonal Antibody



Catalog #: 65275

Aliases

KPNA1; Karyopherin Subunit Alpha 1; NPI-1; RCH2; IPOA5; SRP1; Karyopherin Alpha 1 (Importin Alpha 5); Nucleoprotein Interactor 1; Importin Subunit Alpha-5; RAG Cohort Protein 2; Importin Alpha 5; SRP1-Beta; Recombination Activating Gene Cohort; Karyopherin Subunit Alpha-1; Importin Subunit Alpha-1; Karyopherin Alpha 1; Importin-Alpha-S1

Background

Gene Name: KPNA1

NCBI Gene Entry: [3836](#)

UniProt Entry: [P52294](#)

Application Information

Molecular Weight: Predicted, 60 kDa; observed, 60 kDa

Clonality: Mouse monoclonal antibody

Clone ID: 25GB700

Species Reactivity: Human, mouse, rat

Applications Tested: Western blotting (WB), flow cytometry (FCM)

Immunogen

Recombinant protein of human KPNA1

Isotype

Mouse IgG1

Storage Buffer

Supplied in PBS (pH 7.4) containing 50% glycerol, and 0.02% sodium azide.

Storage

Store at -20 °C for one year.

Recommended Dilutions

Western Blotting (WB): 1:400-1:2,000

Flow Cytometry (FCM): 1:2,000

Note: This product is for research use only.

SUPPORT

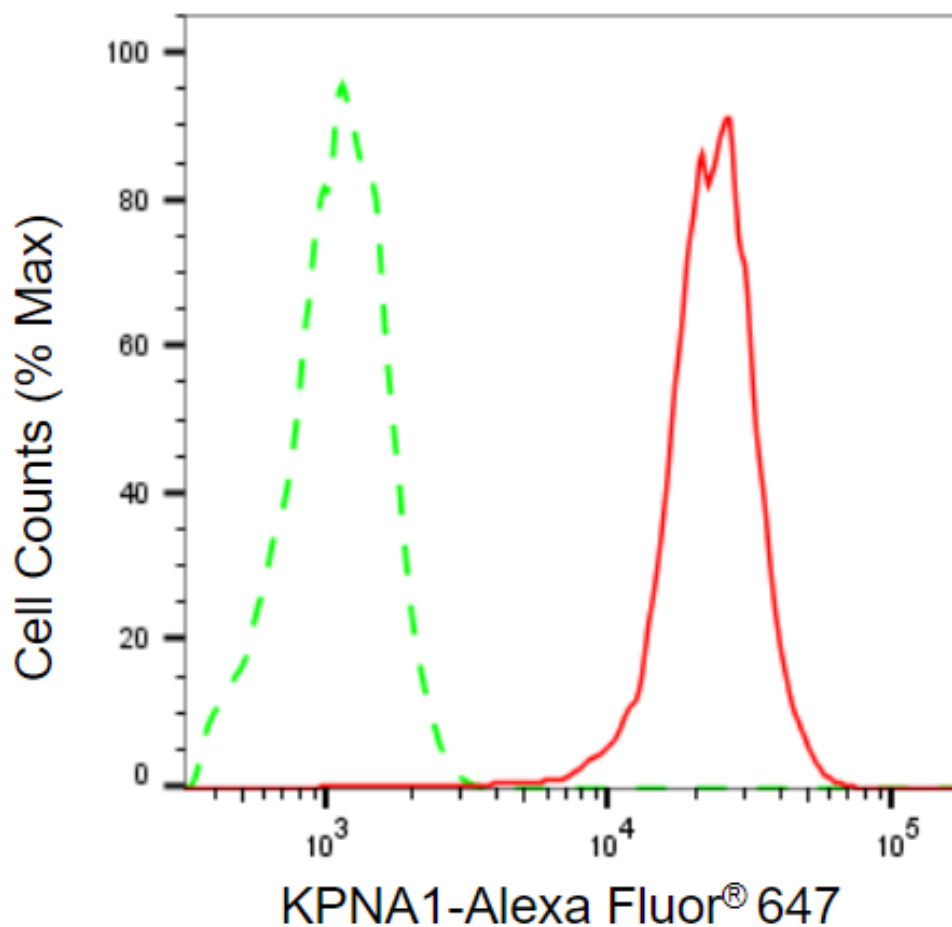
SUPPORT@GENUINBIOTECH.COM
TEL: +1-540-855-7041

ORDERS

SALES@GENUINBIOTECH.COM
FAX: +1-540-855-7041

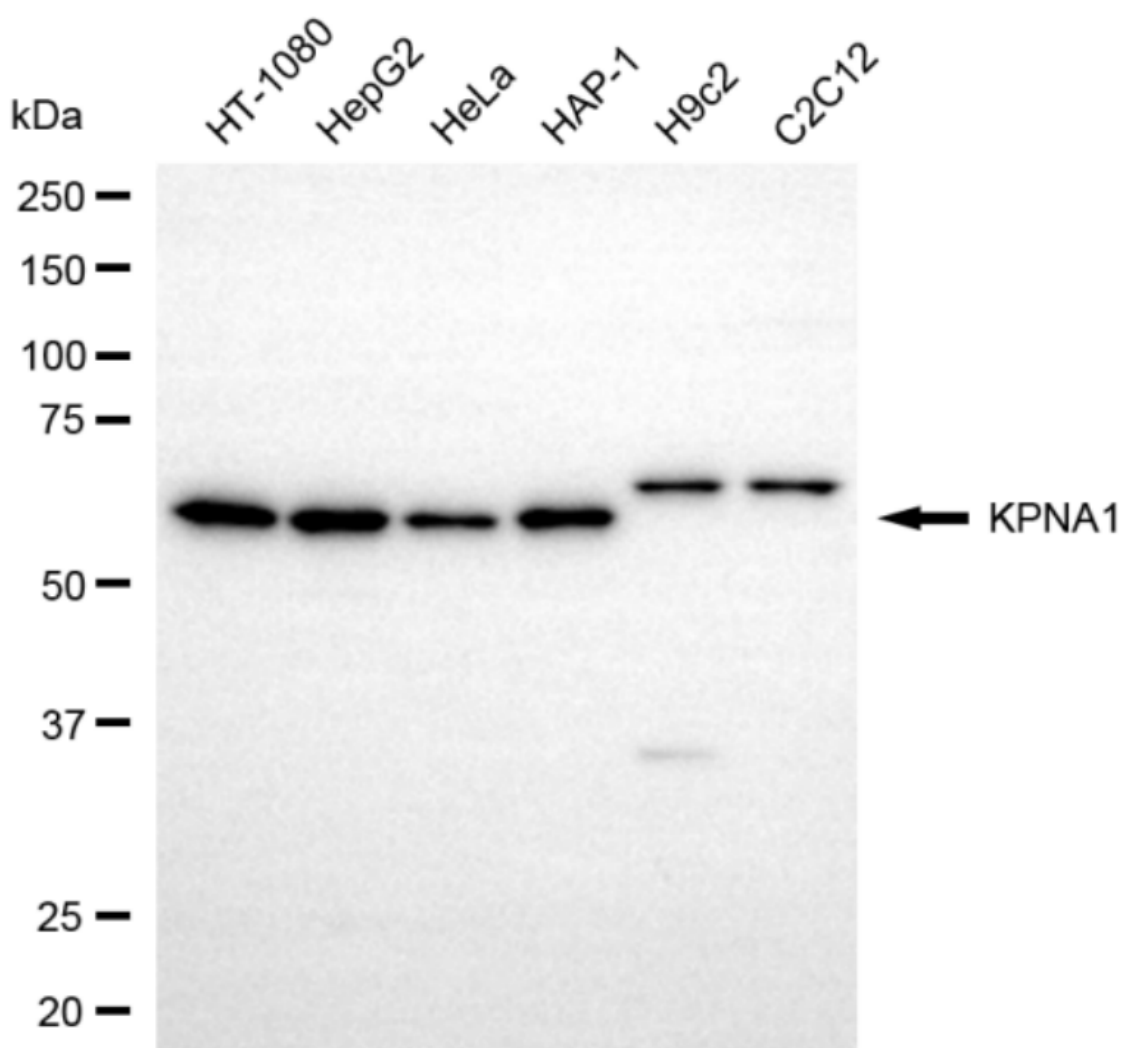
WWW.GENUINBIOTECH.COM

Validation Data



Copyright ©2025 Genuin Biotechnologies LLC

Flow cytometric analysis of KPNA1 expression in HepG2 cells using anti-KPNA1 antibody (Cat#65275, 1:2,000). Green, isotype control; red, KPNA1.

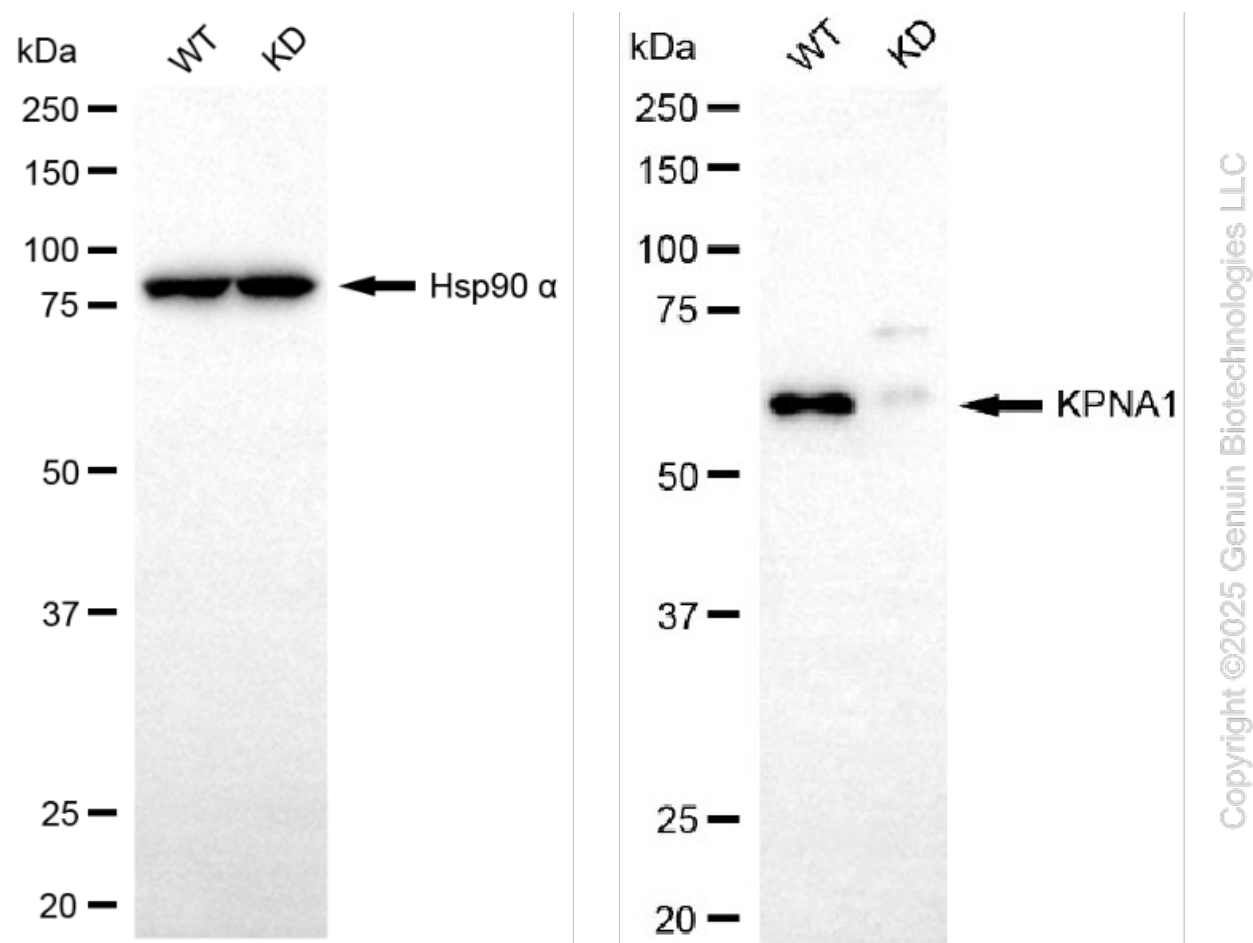


Copyright ©2025 Genuin Biotechnologies LLC

Western blotting analysis using anti-KPNA1 antibody (Cat#65275). Total cell lysates (30 μ g) from various cell lines were loaded and separated by SDS-PAGE. The blot was incubated with anti-KPNA1 antibody (Cat#65275, 1:2,000) and HRP-conjugated goat anti-mouse secondary antibody (Cat#101, 1:20,000) respectively. Image was developed using FeQ™ ECL Substrate Kit (Cat#226).

KD-Validated Anti-KPNA1 Mouse Monoclonal Antibody

PAGE 4



Western blotting analysis using anti-KPNA1 antibody (Cat#65275). KPNA1 expression in wild-type (WT) and KPNA1 knockdown (KD) 293T cells with 20 µg of total cell lysates. Hsp90 α serves as a loading control. The blot was incubated with anti-KPNA1 antibody (Cat#65275, 1:2,000) and HRP-conjugated goat anti-mouse secondary antibody (Cat#101, 1:20,000) respectively. Image was developed using FeQ™ ECL Substrate Kit (Cat#226).

SUPPORT

SUPPORT@GENUINBIOTECH.COM
TEL: +1-540-855-7041

ORDERS

SALES@GENUINBIOTECH.COM
FAX: +1-540-855-7041

WWW.GENUINBIOTECH.COM