

KD-Validated Anti-RALY Mouse Oligoclonal Antibody



Catalog #: 65291

Aliases

RALY; RALY Heterogeneous Nuclear Ribonucleoprotein; HNRPCL2; P542; RNA-Binding Protein (Autoantigenic, HnRNP-Associated With Lethal Yellow); HnRNP Associated With Lethal Yellow Protein Homolog; Heterogeneous Nuclear Ribonucleoprotein C-Like 2; HnRNP Core Protein C-Like 2; RNA-Binding Protein Raly; Autoantigen P542; RNA Binding Protein, Autoantigenic (HnRNP-Associated With Lethal Yellow Homolog (Mouse)); RNA Binding Protein, Autoantigenic (HnRNP-Associated With Lethal Yellow Homolog); RNA-Binding Protein (Autoantigenic)

Background

Gene Name: RALY

NCBI Gene Entry: [22913](#)

UniProt Entry: [Q9UKM9](#)

Application Information

Molecular Weight: Predicted, 32 kDa; observed, 37 kDa

Clonality: Mouse oligoclonal antibody

Species Reactivity: Human

Applications Tested: Western blotting (WB), flow cytometry (FCM), immunocytochemistry (IC)

Immunogen

Recombinant protein of human RALY

Isotype

Mouse IgG

Storage Buffer

Supplied in PBS (pH 7.4) containing 50% glycerol, and 0.02% sodium azide.

Storage

Store at -20 °C for one year.

Recommended Dilutions

Western Blotting (WB): 1:500-1:2,500

Flow Cytometry (FCM): 1:2,000

Immunocytochemistry (IC): 1:100-1:1,000

SUPPORT

SUPPORT@GENUINBIOTECH.COM
TEL: +1-540-855-7041

ORDERS

SALES@GENUINBIOTECH.COM
FAX: +1-540-855-7041

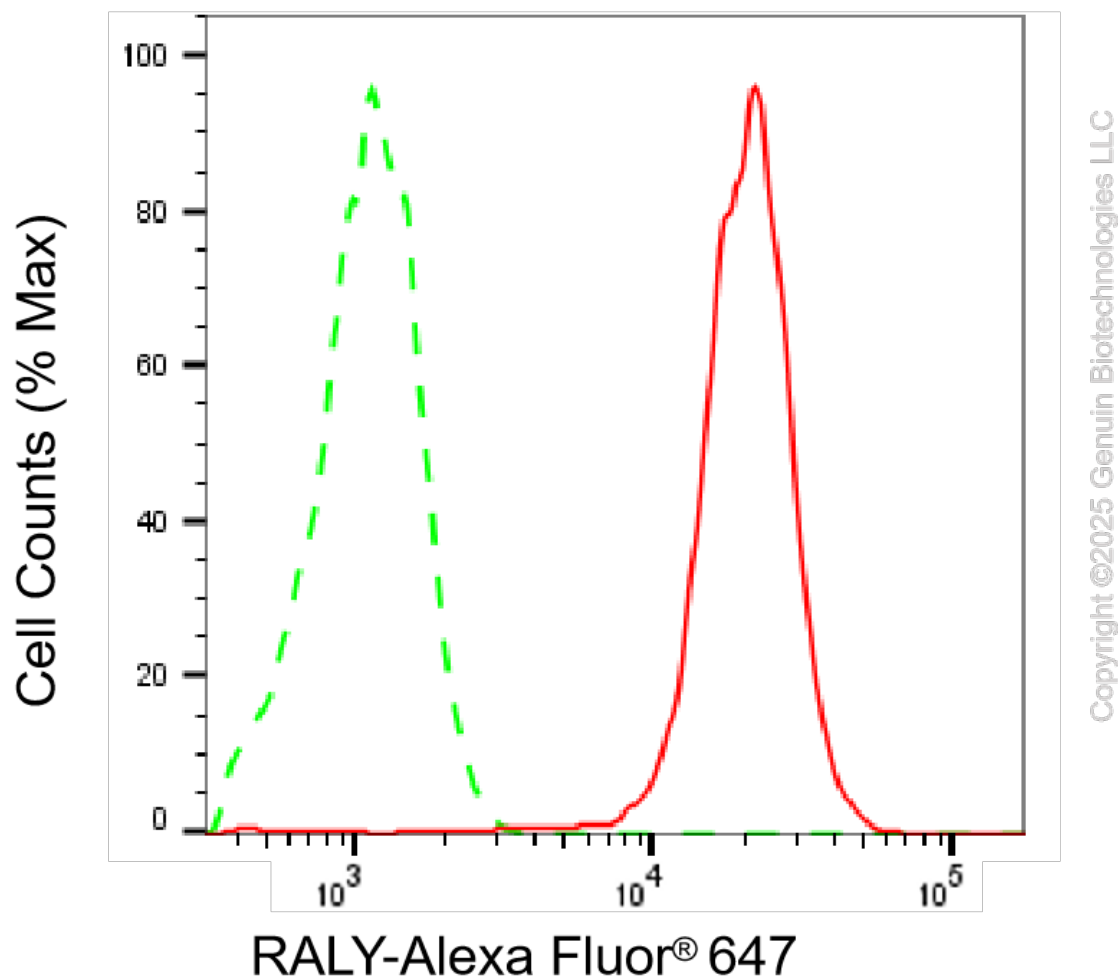
WWW.GENUINBIOTECH.COM

KD-Validated Anti-RALY Mouse Oligoclonal Antibody

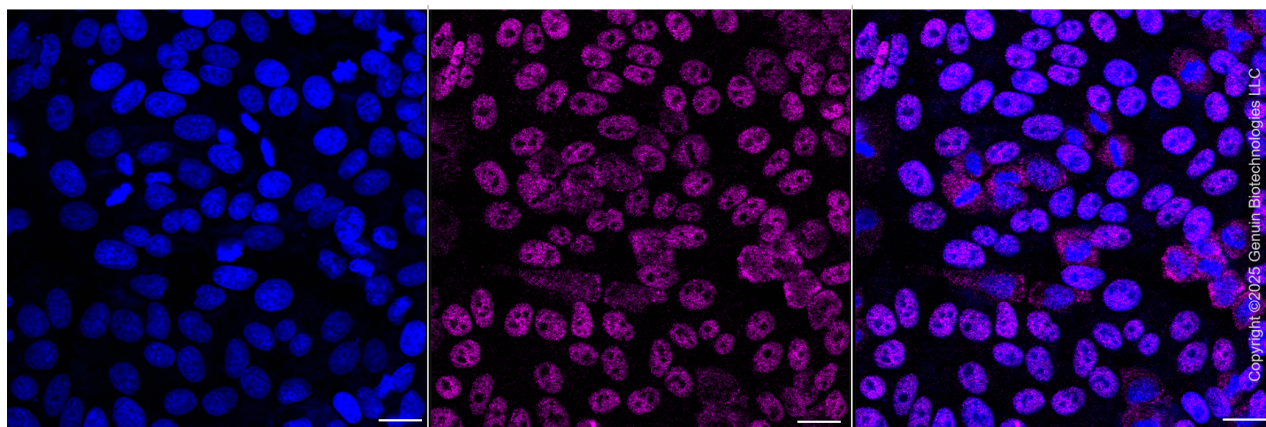
PAGE 2

Note: This product is for research use only.

Validation Data



Flow cytometric analysis of RALY expression in HepG2 cells using anti-RALY antibody (Cat#65291, 1:2,000). Green, isotype control; red, RALY.



SUPPORT

SUPPORT@GENUINBIOTECH.COM
TEL: +1-540-855-7041

ORDERS

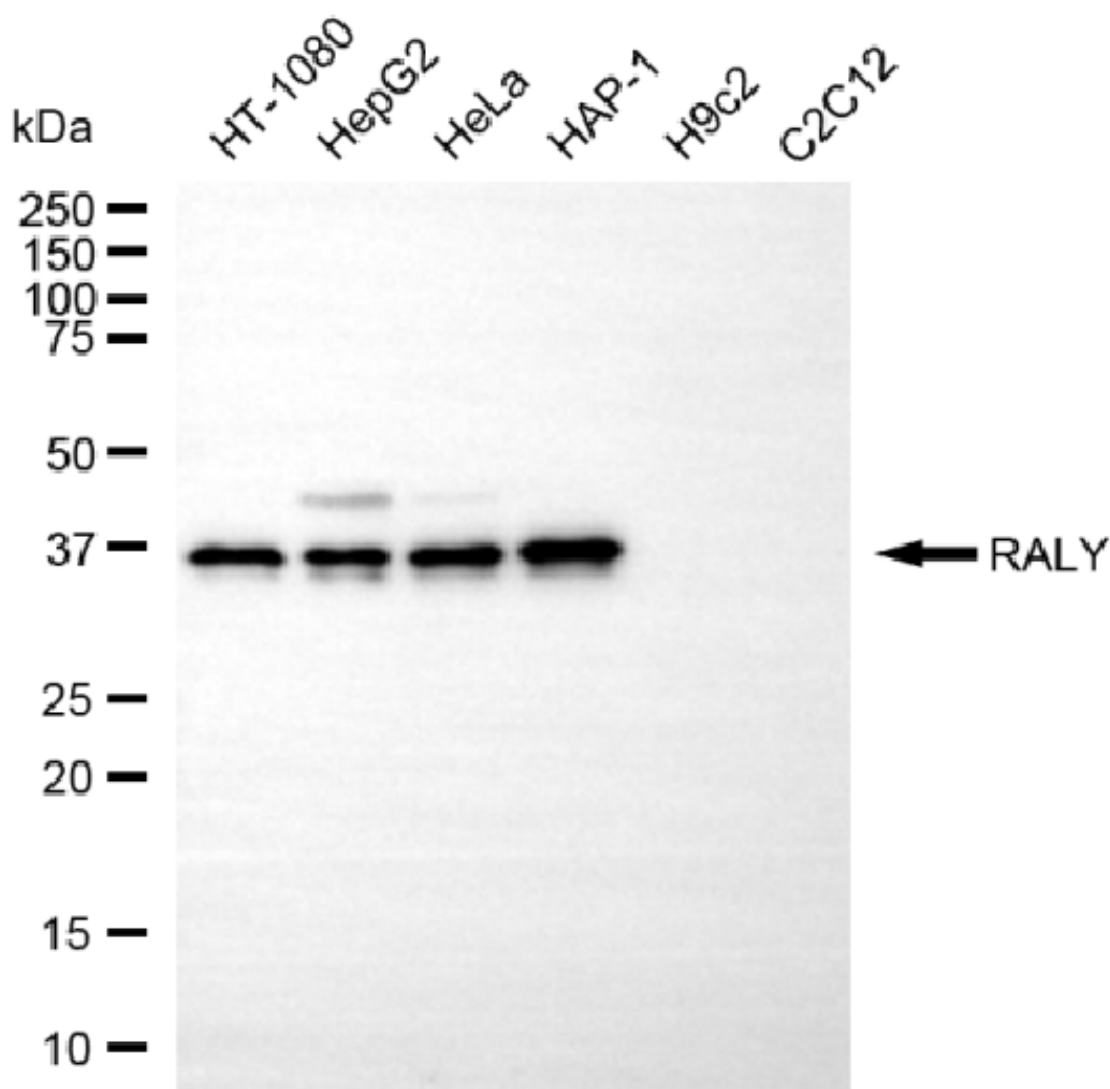
SALES@GENUINBIOTECH.COM
FAX: +1-540-855-7041

WWW.GENUINBIOTECH.COM

KD-Validated Anti-RALY Mouse Oligoclonal Antibody

PAGE 3

Immunocytochemical staining of HepG2 cells with anti-RALY antibody (Cat#65291, 1:1,000). Nuclei were stained blue with DAPI; RALY was stained magenta with Alexa Fluor® 647. Images were taken using Leica stellaris 5. Protein abundance based on laser Intensity and smart gain: Medium. Scale bar, 20 μ m.



Copyright ©2025 Genuin Biotechnologies LLC

Western blotting analysis using anti-RALY antibody (Cat#65291). Total cell lysates (30 μ g) from various cell lines were loaded and separated by SDS-PAGE. The blot was incubated with anti-RALY antibody (Cat#65291, 1:2,500) and HRP-conjugated goat anti-mouse secondary antibody (Cat#101, 1:20,000) respectively. Image was developed using NaQ™ ECL Substrate Kit (Cat#716).

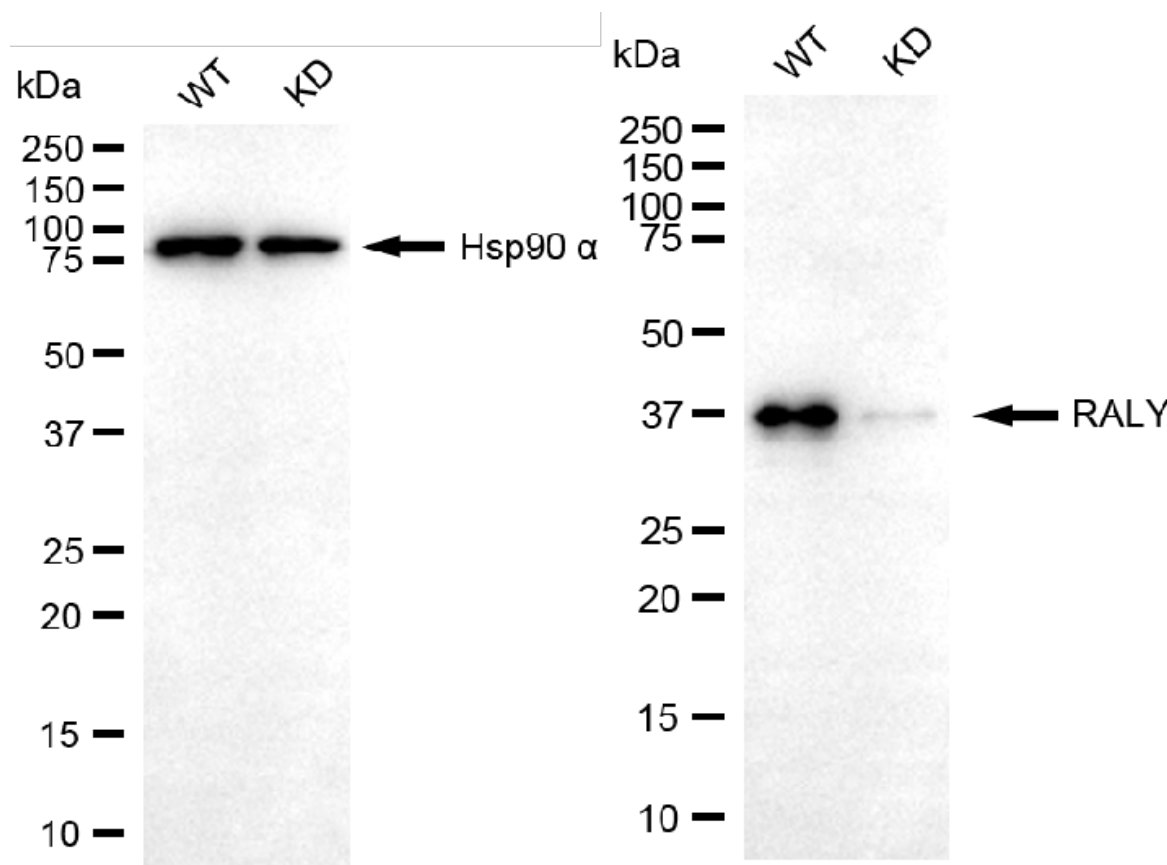
SUPPORT

SUPPORT@GENUINBIOTECH.COM
TEL: +1-540-855-7041

ORDERS

SALES@GENUINBIOTECH.COM
FAX: +1-540-855-7041

WWW.GENUINBIOTECH.COM



Copyright ©2025 Genuin Biotechnologies LLC

Western blotting analysis using anti-RALY antibody (Cat#65291). RALY expression in wild-type (WT) and RALY knockdown (KD) HT-1080 cells with 20 µg of total cell lysates. Hsp90 α serves as a loading control. The blot was incubated with anti-RALY antibody (Cat#65291, 1:2,500) and HRP-conjugated goat anti-mouse secondary antibody (Cat#101, 1:20,000) respectively. Image was developed using FeQ™ ECL Substrate Kit (Cat#226).