

KD-Validated Anti-ADD1 Mouse Oligoclonal Antibody



Catalog #: 65299

Aliases

ADD1; Adducin 1; Alpha-Adducin; Adducin 1 (Alpha); ADDA; Erythrocyte Adducin Alpha Subunit; Erythrocyte Adducin Subunit Alpha; Alpha-Adducin 1

Background

Gene Name: ADD1

NCBI Gene Entry: [118](#)

UniProt Entry: [P35611](#)

Application Information

Molecular Weight: Predicted, 81 kDa; observed, 120 kDa

Clonality: Mouse oligoclonal antibody

Species Reactivity: Human, rat

Applications Tested: Western blotting (WB)

Immunogen

Recombinant protein of human ADD1

Isotype

Mouse IgG

Storage Buffer

Supplied in PBS (pH 7.4) containing 50% glycerol, and 0.02% sodium azide.

Storage

Store at -20 °C for one year.

Recommended Dilutions

Western Blotting (WB): 1:500-1:2,500

Note: This product is for research use only.

Validation Data

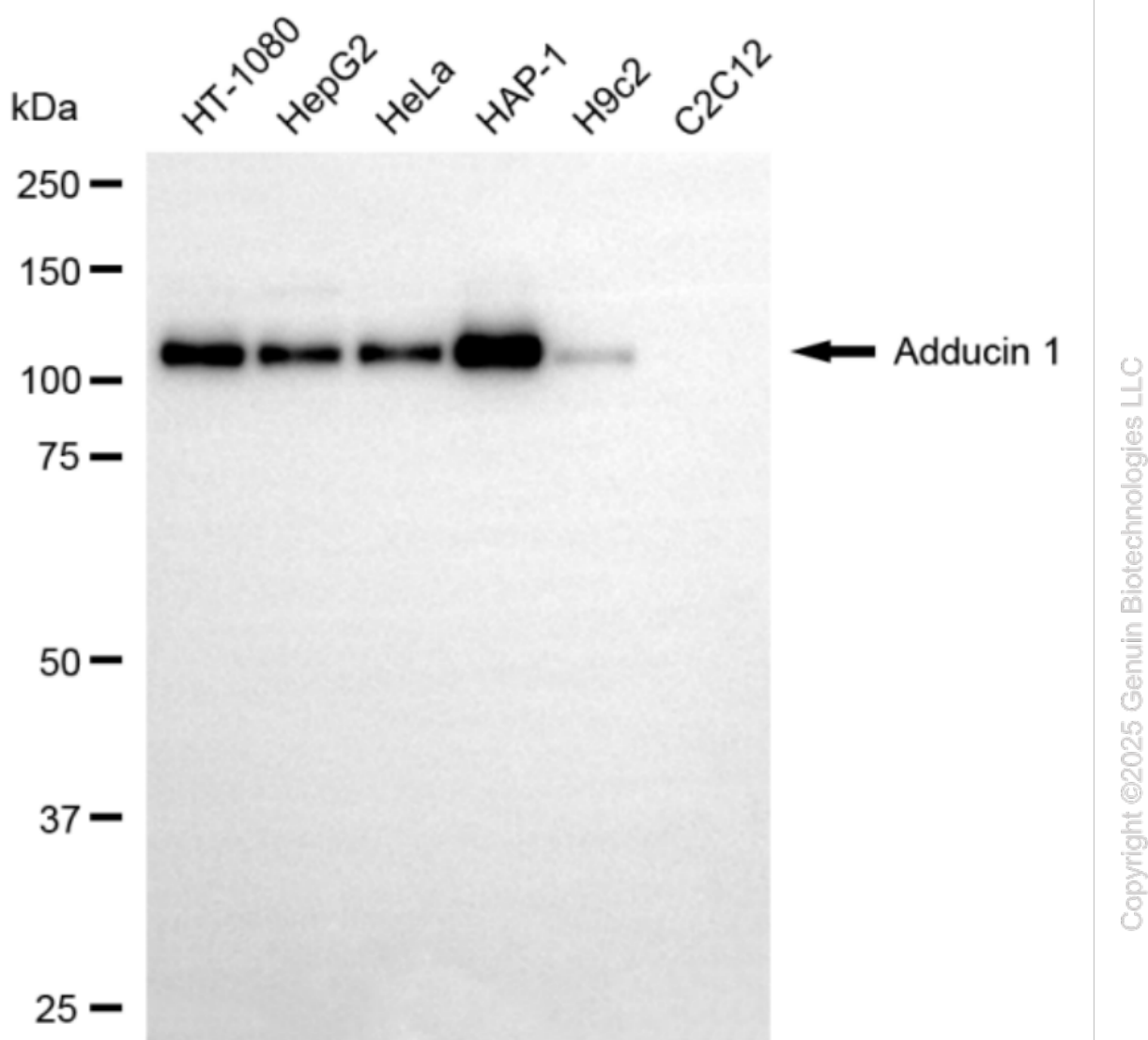
SUPPORT

SUPPORT@GENUINBIOTECH.COM
TEL: +1-540-855-7041

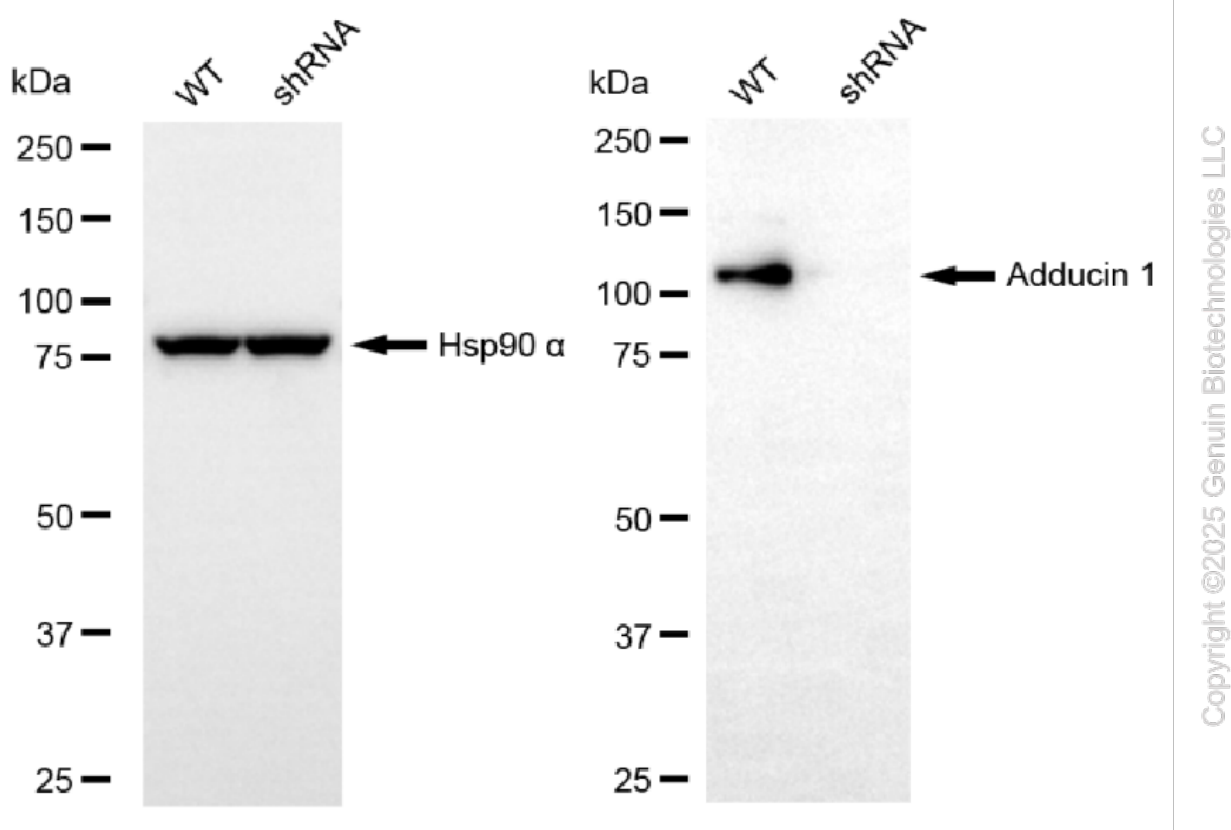
ORDERS

SALES@GENUINBIOTECH.COM
FAX: +1-540-855-7041

WWW.GENUINBIOTECH.COM



Western blotting analysis using anti-adducin 1 antibody (Cat#65299). Total cell lysates (30 μ g) from various cell lines were loaded and separated by SDS-PAGE. The blot was incubated with anti-adducin 1 antibody (Cat#65299, 1:2,500) and HRP-conjugated goat anti-mouse secondary antibody (Cat#101, 1:20,000) respectively. Image was developed using FeQ™ ECL Substrate Kit (Cat#226).



Western blotting analysis using anti-adducin 1 antibody (Cat#65299). Adducin 1 expression in wild-type (WT) and adducin 1 (ADD1) shRNA knockdown (KD) HT-1080 cells with 20 µg of total cell lysates. Hsp90 α serves as a loading control. The blot was incubated with anti-adducin 1 antibody (Cat#65299, 1:2,500) and HRP-conjugated goat anti-mouse secondary antibody (Cat#101, 1:20,000) respectively. Image was developed using FeQ™ ECL Substrate Kit (Cat#226).