

KD-Validated Anti-ZC3HC1 Mouse Oligoclonal Antibody



Catalog #: 65310

Aliases

ZC3HC1; Zinc Finger C3HC-Type Containing 1; NIPA; Nuclear-Interacting Partner Of ALK; Zinc Finger C3HC-Type Protein 1; Nuclear Interacting Partner Of Anaplastic Lymphoma Kinase (ALK); Nuclear-Interacting Partner Of Anaplastic Lymphoma Kinase; Hematopoietic Stem/Progenitor Cell Protein 216; Nuclear Interaction Partner Of ALK; HSPC216; HNIPA

Background

Gene Name: ZC3HC1

NCBI Gene Entry: [51530](#)

UniProt Entry: [Q86WB0](#)

Application Information

Molecular Weight: Predicted, 55 kDa; observed, 55 kDa

Clonality: Mouse oligoclonal antibody

Species Reactivity: Human, mouse

Applications Tested: Western blotting (WB), flow cytometry (FCM), immunocytochemistry (IC)

Immunogen

Recombinant protein of human ZC3HC1

Isotype

Mouse IgG

Storage Buffer

Supplied in PBS (pH 7.4) containing 50% glycerol, and 0.02% sodium azide.

Storage

Store at -20 °C for one year.

Recommended Dilutions

Western Blotting (WB): 1:200-1:1,000

Immunocytochemistry (IC): 1:100-1:1,000

Flow Cytometry (FCM) : 1:2,000

Note: This product is for research use only.

SUPPORT

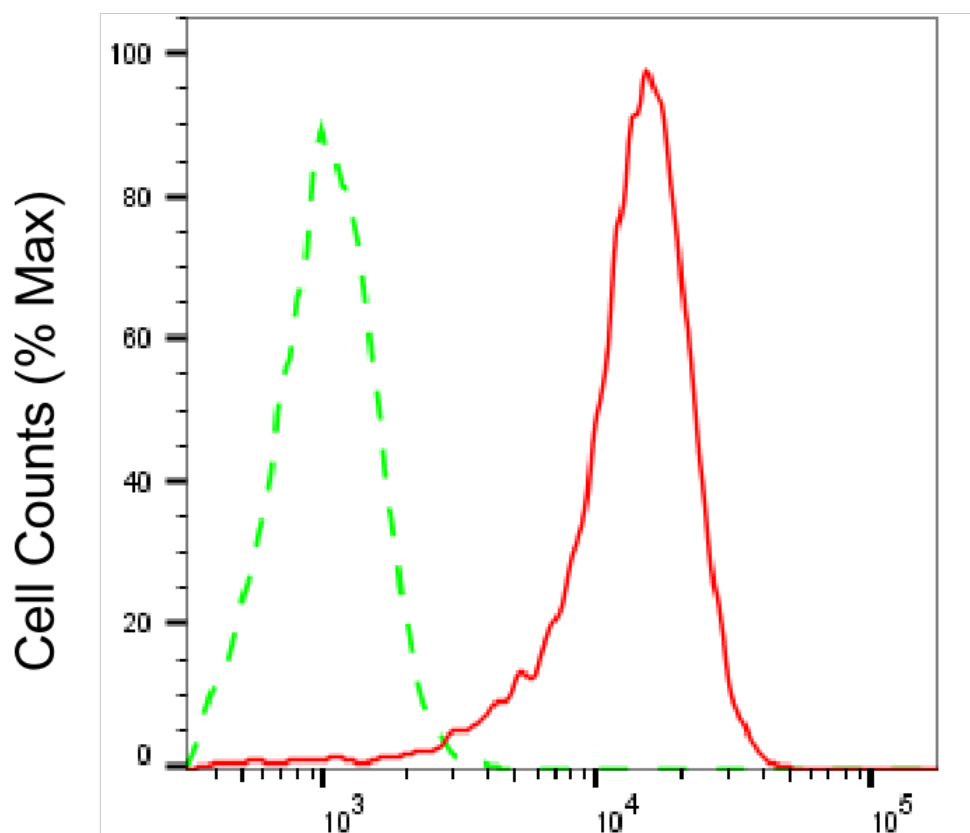
SUPPORT@GENUINBIOTECH.COM
TEL: +1-540-855-7041

ORDERS

SALES@GENUINBIOTECH.COM
FAX: +1-540-855-7041

WWW.GENUINBIOTECH.COM

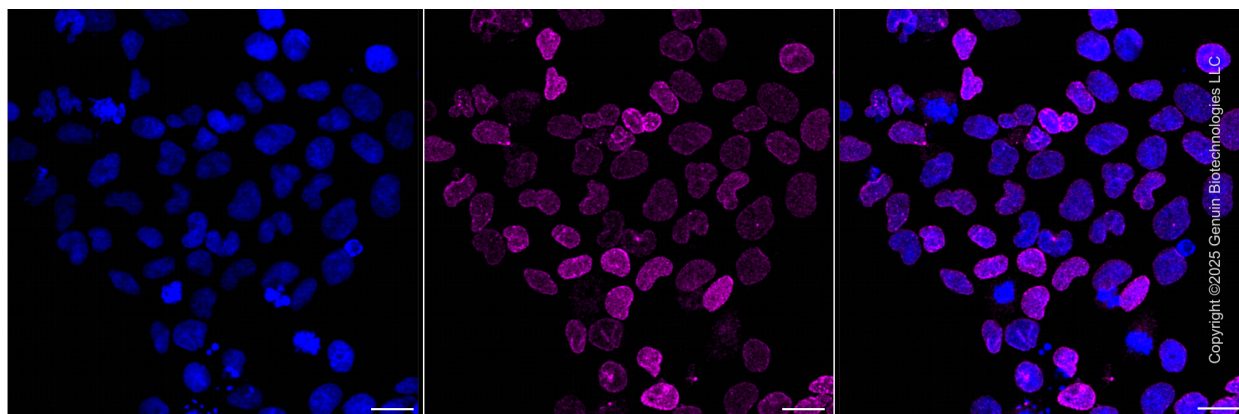
Validation Data



Copyright ©2025 Genuin Biotechnologies LLC

ZC3HC1-Alexa Fluor® 647

Flow cytometric analysis of ZC3HC1 expression in HeLa cells using anti-ZC3HC1 antibody (Cat#65310, 1:2,000). Green, isotype control; red, ZC3HC1.



Copyright ©2025 Genuin Biotechnologies LLC

Immunocytochemical staining of HeLa cells with anti-ZC3HC1 protein antibody (Cat#65310, 1:1,000). Nuclei were stained blue with DAPI; ZC3HC1 was stained magenta with Alexa Fluor® 647. Images were taken using Leica stellaris 5. Protein abundance based on laser intensity and

SUPPORT

SUPPORT@GENUINBIOTECH.COM
TEL: +1-540-855-7041

ORDERS

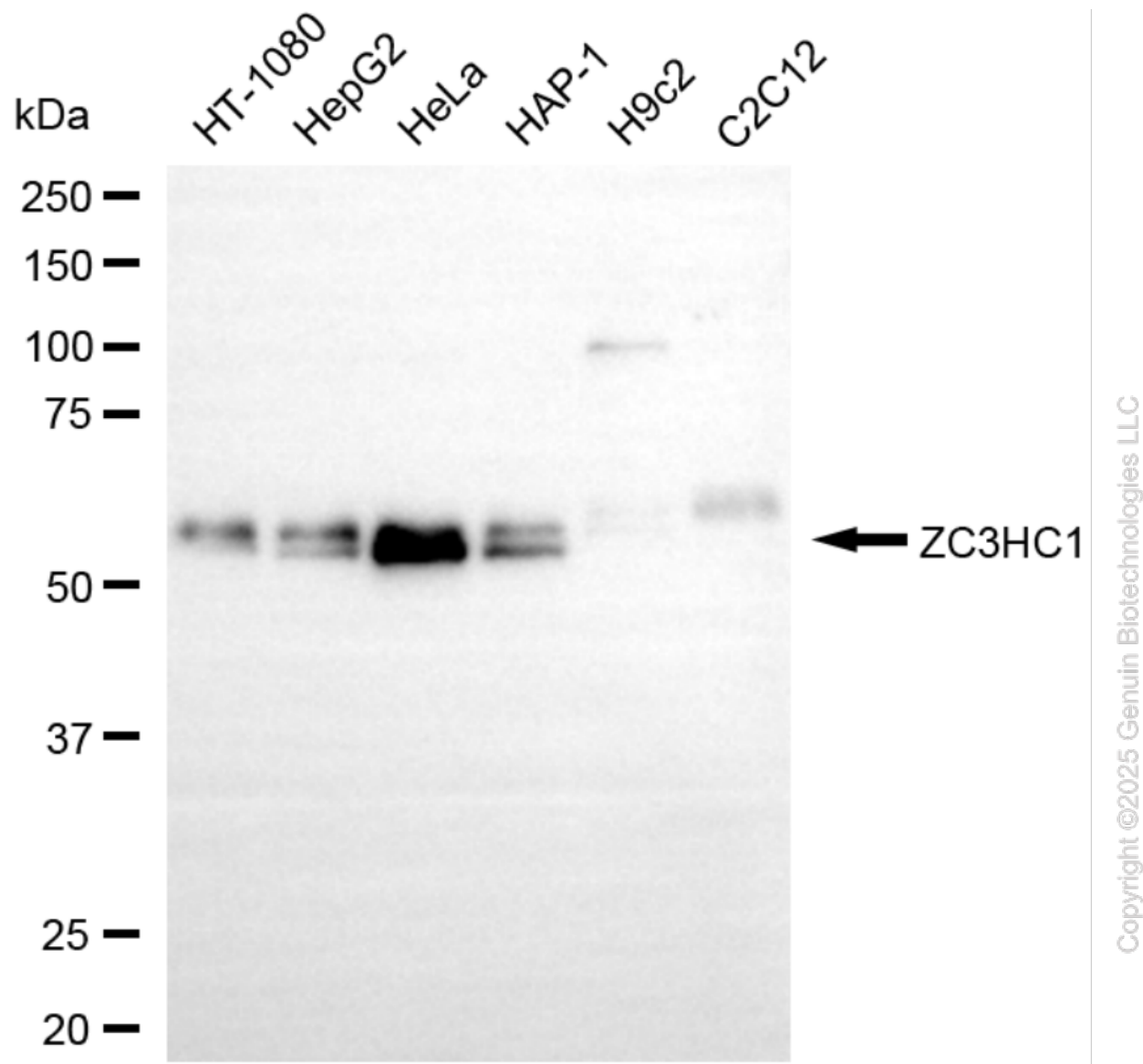
SALES@GENUINBIOTECH.COM
FAX: +1-540-855-7041

WWW.GENUINBIOTECH.COM

KD-Validated Anti-ZC3HC1 Mouse Oligoclonal Antibody

PAGE 3

smart gain: Medium. Scale bar, 20 μ m.



Western blotting analysis using anti-ZC3HC1 antibody (Cat#65310). Total cell lysates (30 μ g) from various cell lines were loaded and separated by SDS-PAGE. The blot was incubated with anti-ZC3HC1 antibody (Cat#65310, 1:1,000) and HRP-conjugated goat anti-mouse secondary antibody (Cat#101, 1:20,000) respectively. Image was developed using NaQTM ECL Substrate Kit (Cat#716).

SUPPORT

SUPPORT@GENUINBIOTECH.COM
TEL: +1-540-855-7041

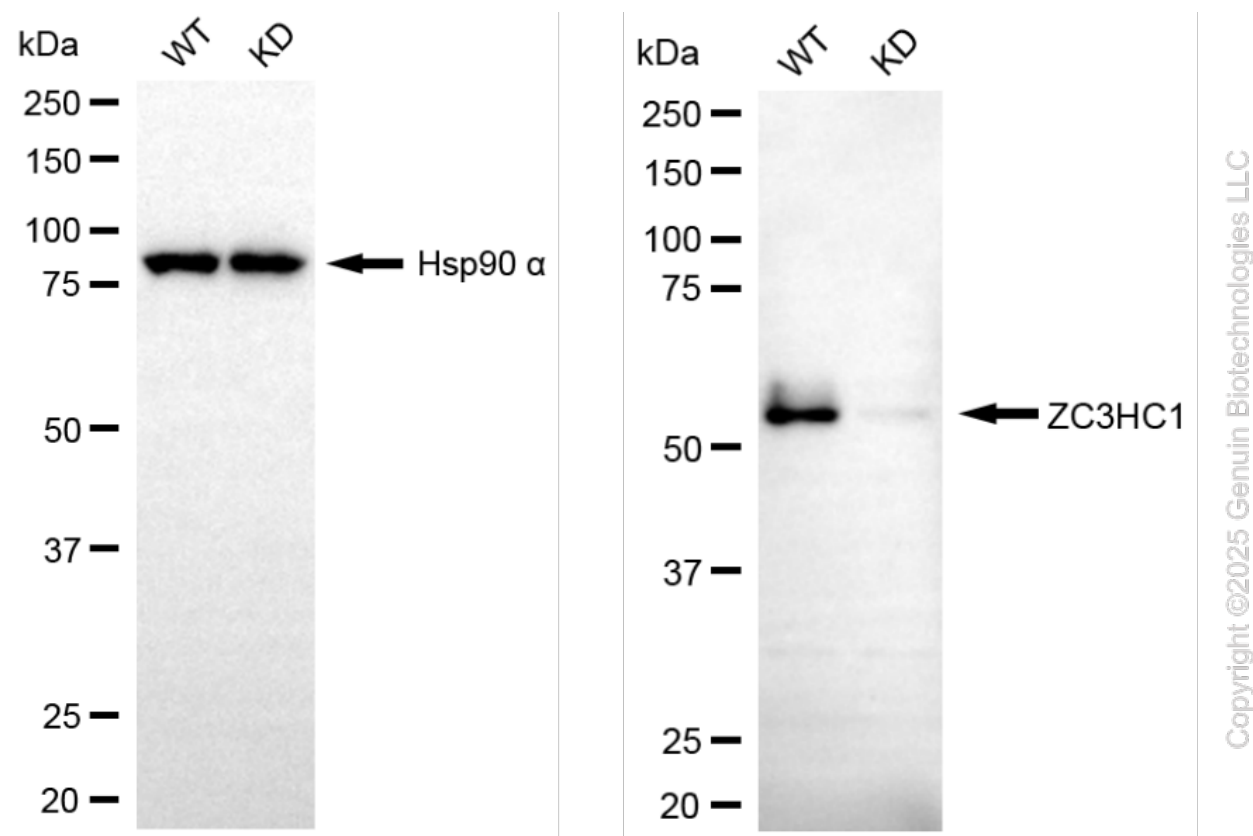
ORDERS

SALES@GENUINBIOTECH.COM
FAX: +1-540-855-7041

WWW.GENUINBIOTECH.COM

KD-Validated Anti-ZC3HC1 Mouse Oligoclonal Antibody

PAGE 4



Western blotting analysis using anti-ZC3HC1 antibody (Cat#65310). ZC3HC1 expression in wild-type (WT) and ZC3HC1 knockdown (KD) HSHC cells with 30 µg of total cell lysates. Hsp90 α serves as a loading control. The blot was incubated with anti-ZC3HC1 antibody (Cat#65310, 1:1,000) and HRP-conjugated goat anti-mouse secondary antibody (Cat#101, 1:20,000) respectively. Image was developed using FeQ™ ECL Substrate Kit (Cat#226).

SUPPORT

SUPPORT@GENUINBIOTECH.COM
TEL: +1-540-855-7041

ORDERS

SALES@GENUINBIOTECH.COM
FAX: +1-540-855-7041

WWW.GENUINBIOTECH.COM