

KD-Validated Anti-TFAP2C Rabbit Monoclonal Antibody



Catalog #: 65311

Aliases

TFAP2C; Transcription Factor AP-2 Gamma; AP2-GAMMA; TFAP2G; HAP-2g; ERF1; Activating Enhancer-Binding Protein 2 Gamma; Estrogen Receptor Factor 1; Transcription Factor ERF-1; Transcription Factor AP-2 Gamma (Activating Enhancer-Binding Protein 2 Gamma); AP2-Gamma

Background

Gene Name: TFAP2C
NCBI Gene Entry: [7022](#)
UniProt Entry: [Q92754](#)

Application Information

Molecular Weight: Predicted, 49 kDa; observed, 49 kDa
Clonality: Rabbit monoclonal antibody
Clone ID: 25GB885
Species Reactivity: Human
Applications Tested: Western blotting (WB), flow cytometry (FCM)

Immunogen

Recombinant protein of human TFAP2C

Isotype

Rabbit IgG

Storage Buffer

Supplied in PBS (pH 7.4) containing 50% glycerol, and 0.02% sodium azide.

Storage

Store at -20 °C for one year.

Recommended Dilutions

Western Blotting (WB): 1:1,000-1:5,000
Flow Cytometry (FCM): 1:200-1:2,000

Note: This product is for research use only.

SUPPORT

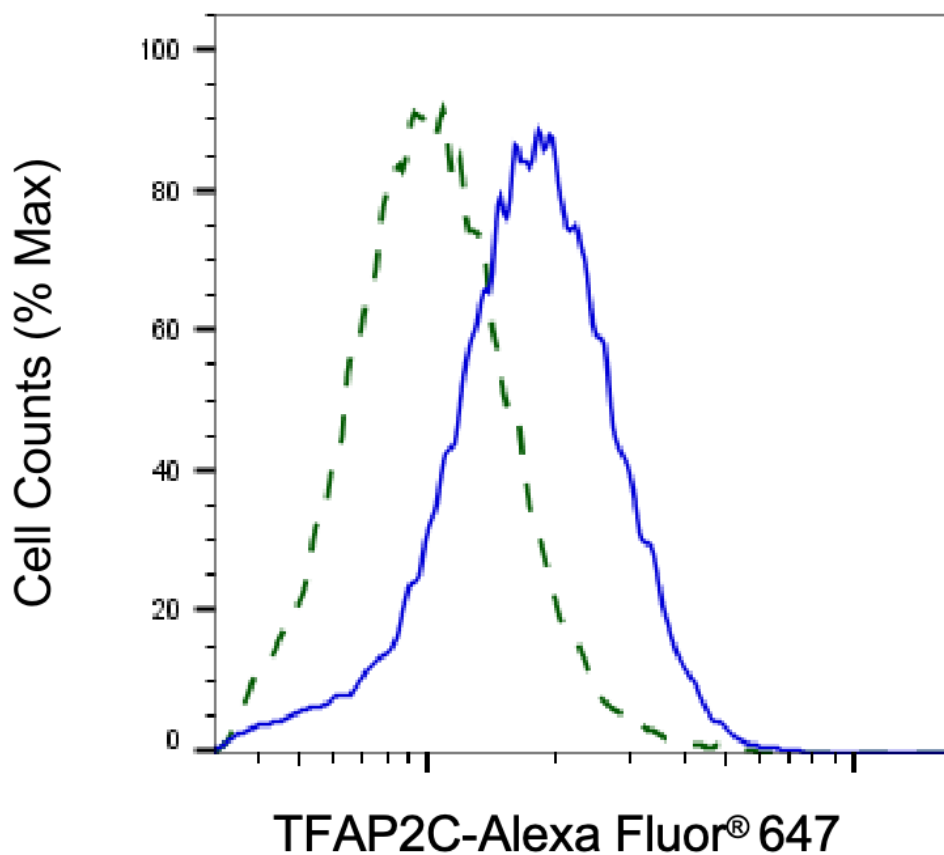
SUPPORT@GENUINBIOTECH.COM
TEL: +1-540-855-7041

ORDERS

SALES@GENUINBIOTECH.COM
FAX: +1-540-855-7041

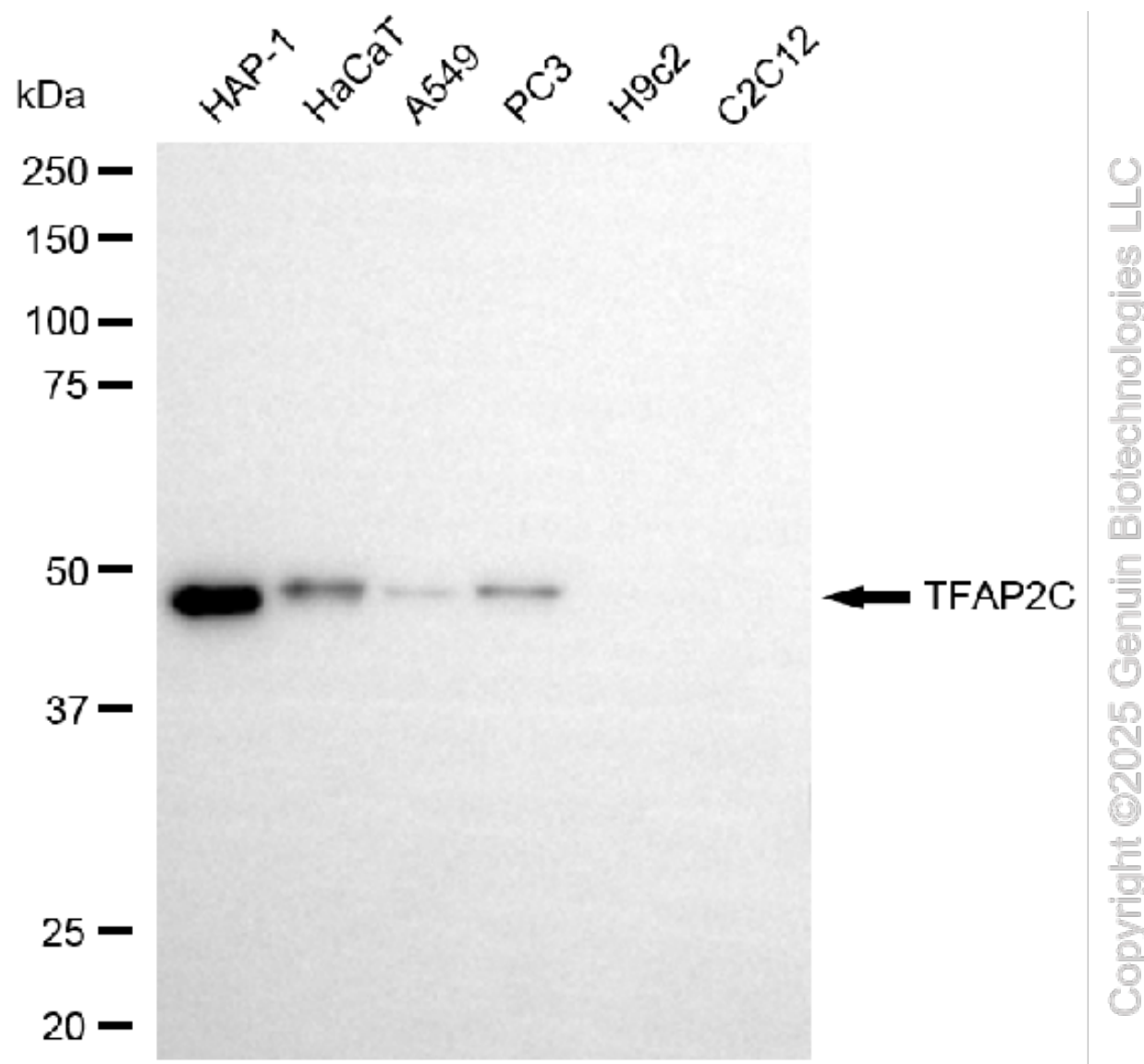
WWW.GENUINBIOTECH.COM

Validation Data

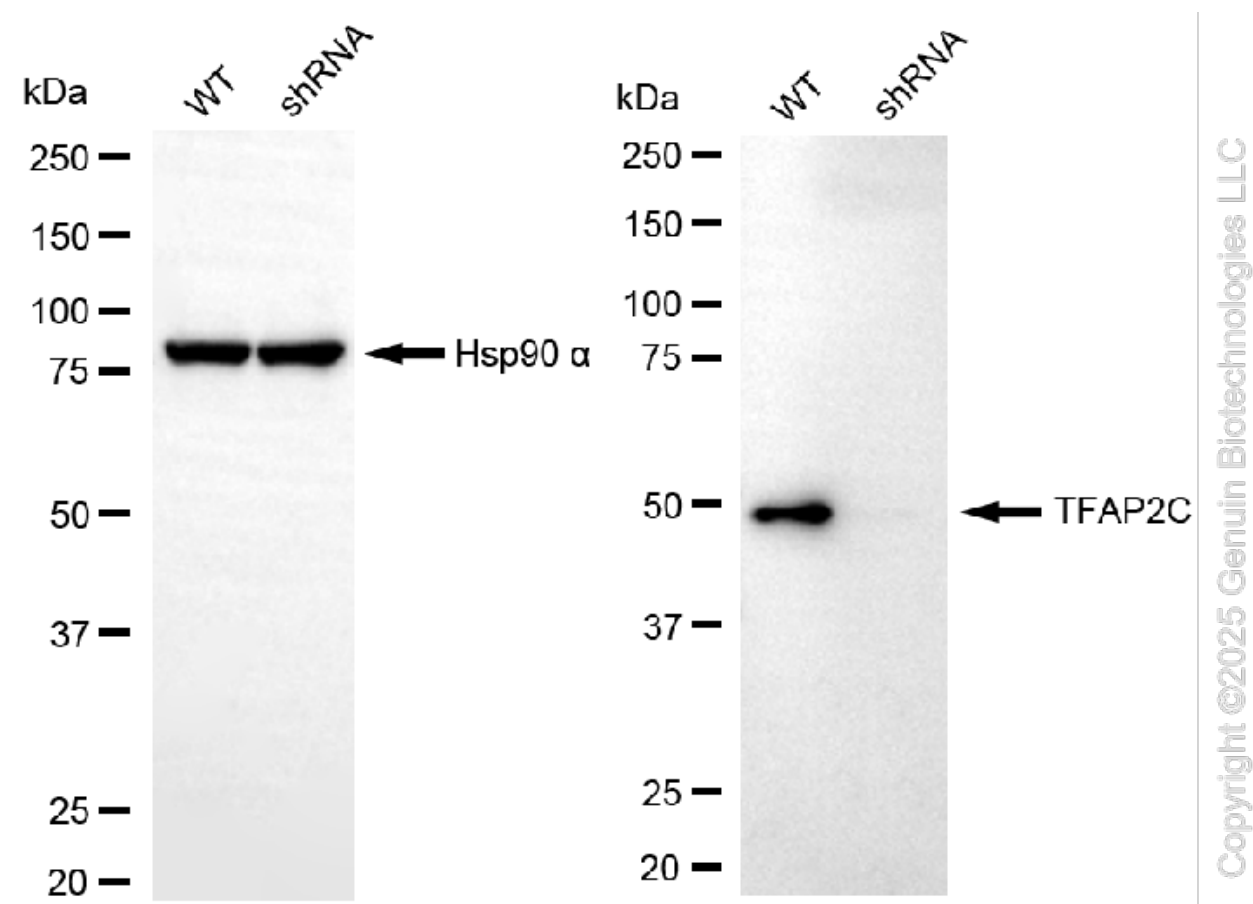


Copyright ©2025 Genuin Biotechnologies LLC

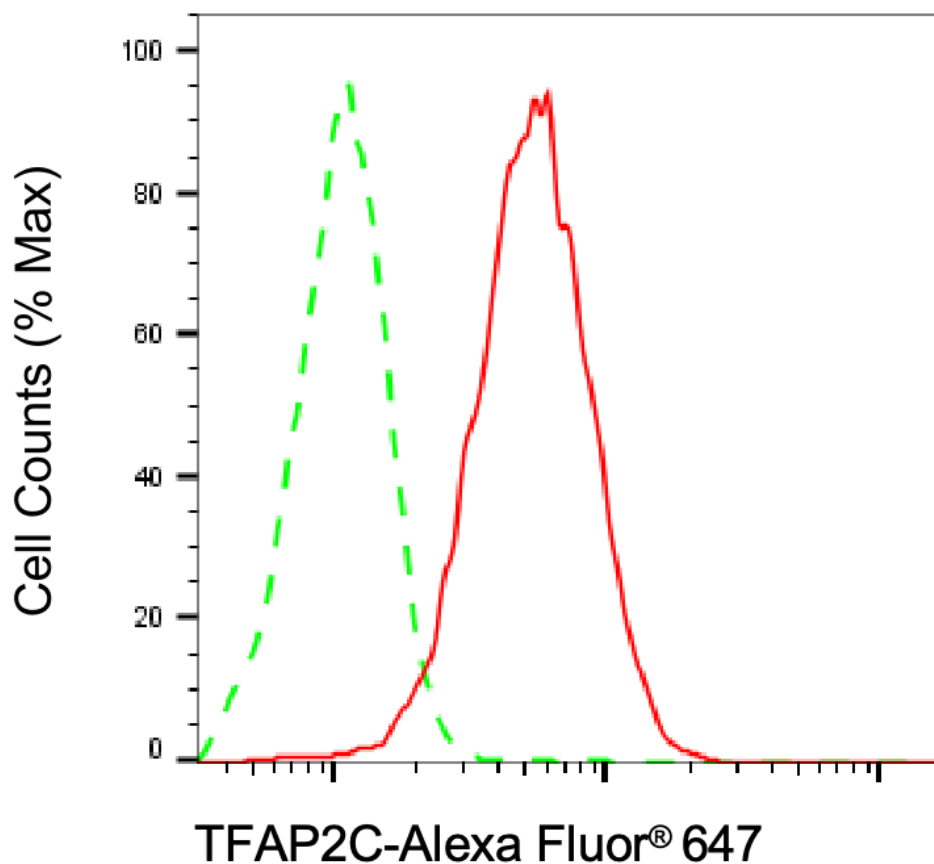
Validation of TFAP2C knockdown using flow cytometry. Wild-type(WT, Blue) and knockdown(KD, Green) HeLa cells were stained with anti-TFAP2C antibody (Cat#65311, 1:2,000) and analyzed using BD flow cytometer.



Western blotting analysis using anti-TFAP2C antibody (Cat#65311). Total cell lysates (30 µg) from various cell lines were loaded and separated by SDS-PAGE. The blot was incubated with anti-TFAP2C antibody (Cat#65311, 1:5,000) and HRP-conjugated goat anti-rabbit secondary antibody (Cat#201, 1:20,000) respectively. Image was developed using NaQ™ ECL Substrate Kit (Cat#716).



Western blotting analysis using anti-TFAP2C antibody (Cat#65311). TFAP2C expression in wild-type (WT) and TFAP2C shRNA knockdown (KD) HeLa cells with 30 µg of total cell lysates. Hsp90 α serves as a loading control. The blot was incubated with anti-TFAP2C antibody (Cat#65311, 1:5,000) and HRP-conjugated goat anti-rabbit secondary antibody (Cat#201, 1:20,000) respectively. Image was developed using FeQ™ ECL Substrate Kit (Cat#226).



Copyright ©2025 Genuin Biotechnologies LLC

Flow cytometric analysis of TFAP2C expression in HAP-1 cells using anti-TFAP2C antibody (Cat#65311, 1:2,000). Green, isotype control; red, TFAP2C.