

KD-Validated Anti-Malic Enzyme 2 Rabbit Monoclonal Antibody



Catalog #: 65320

Aliases

ME2; Malic Enzyme 2; NAD-Dependent Malic Enzyme, Mitochondrial; Malate Dehydrogenase (Oxaloacetate-Decarboxylating); Malic Enzyme 2, NAD(+)-Dependent, Mitochondrial; NAD-ME; Pyruvic-Malic Carboxylase; EC 1.1.1.38; EC 1.1.1; ODS1

Background

Gene Name: ME2

NCBI Gene Entry: [4200](#)

UniProt Entry: [UniProt Entry: P23368](#)

Application Information

Molecular Weight: Predicted, 65 kDa; observed, 58 kDa

Clonality: Rabbit monoclonal antibody

Clone ID: 25GB930

Species Reactivity: Human

Applications Tested: Western blotting (WB), flow cytometry (FCM)

Immunogen

A synthesized peptide derived from human ME2

Isotype

Rabbit IgG

Storage Buffer

Supplied in PBS (pH 7.4) containing 50% glycerol, and 0.02% sodium azide.

Storage

Store at -20 °C for one year.

Recommended Dilutions

Western Blotting (WB): 1:1,000-1:5,000

Flow Cytometry (FCM): 1:2,000

Note: This product is for research use only.

Validation Data

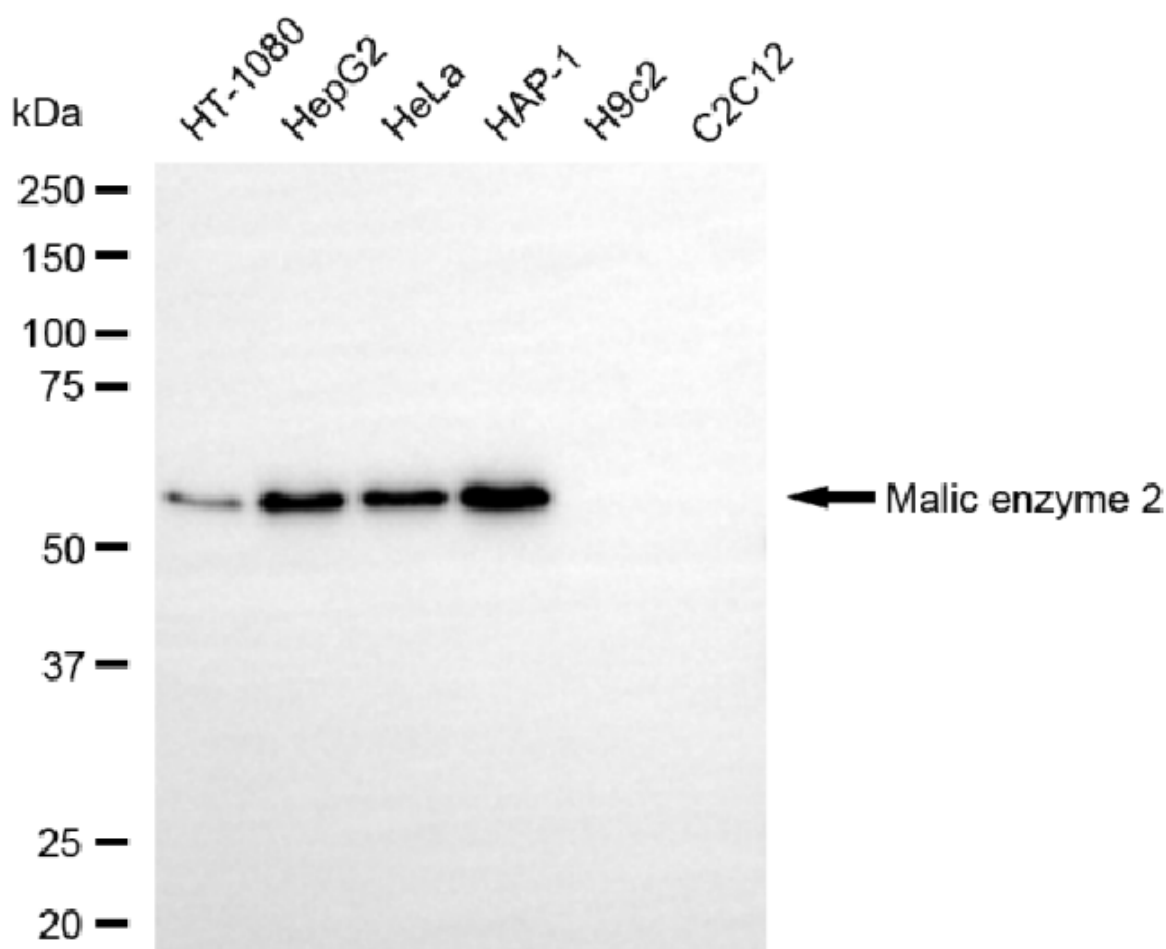
SUPPORT

SUPPORT@GENUINBIOTECH.COM
TEL: +1-540-855-7041

ORDERS

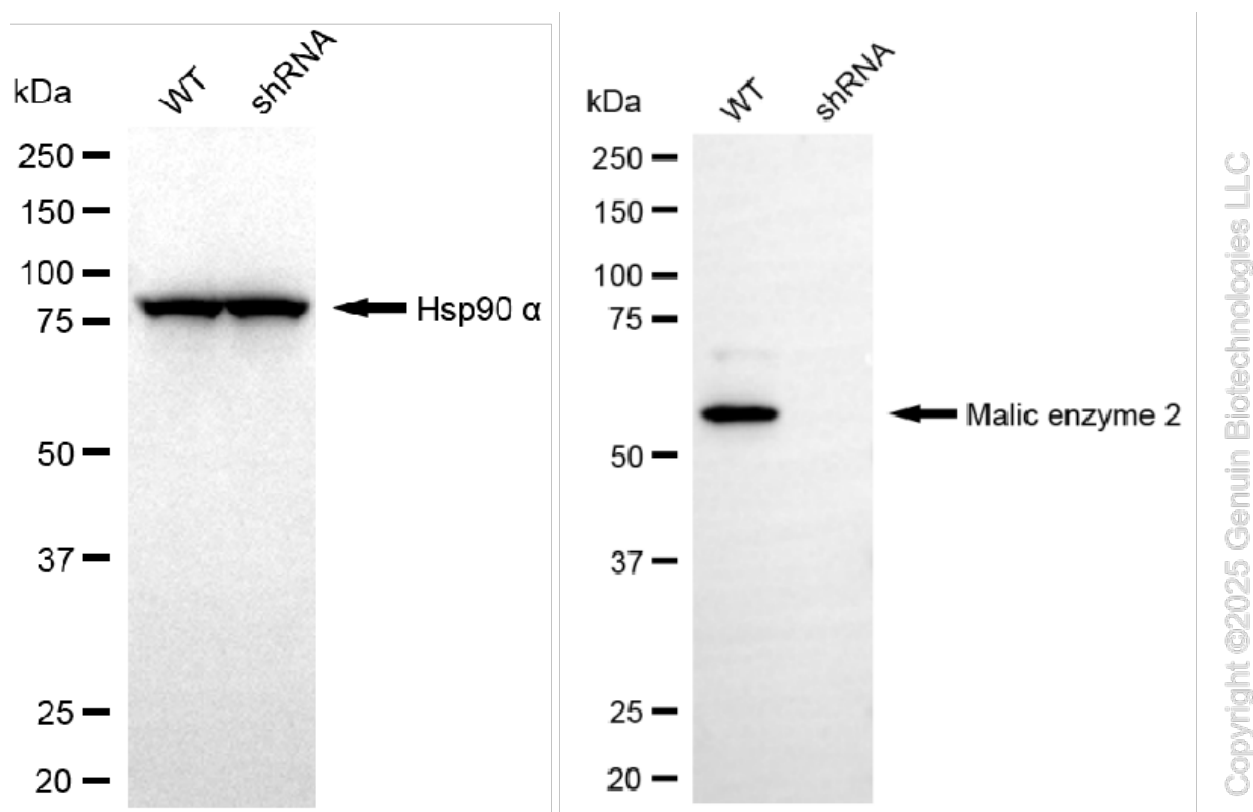
SALES@GENUINBIOTECH.COM
FAX: +1-540-855-7041

WWW.GENUINBIOTECH.COM

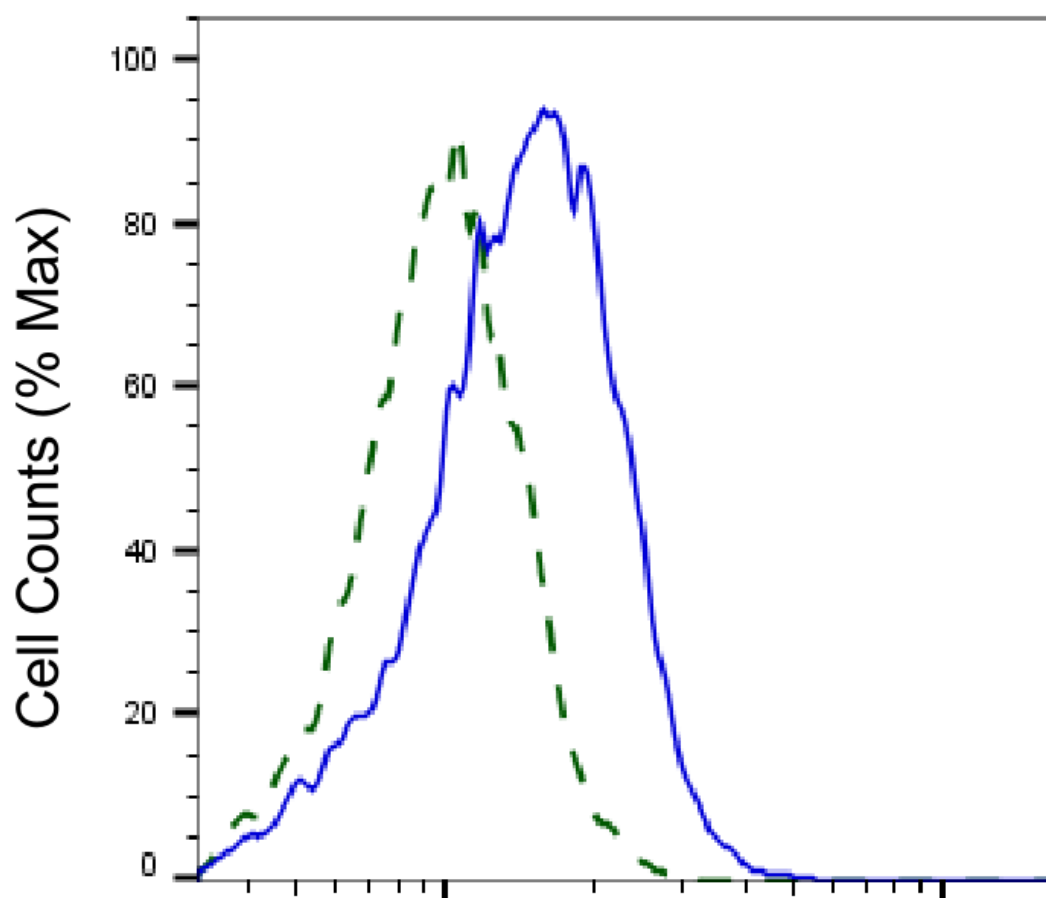


Copyright ©2025 Genuin Biotechnologies LLC

Western blotting analysis using anti-malic enzyme 2 antibody (Cat#65320). Total cell lysates (30 μ g) from various cell lines were loaded and separated by SDS-PAGE. The blot was incubated with anti-malic enzyme 2 antibody (Cat#65320, 1:5,000) and HRP-conjugated goat anti-rabbit secondary antibody (Cat#201, 1:20,000) respectively. Image was developed using NaQ™ ECL Substrate Kit (Cat#716).



Western blotting analysis using anti-malic enzyme 2 antibody (Cat#65320). Malic enzyme 2 expression in wild-type (WT) and malic enzyme 2 (ME2) shRNA knockdown (KD) HeLa cells with 20 µg of total cell lysates. Hsp90 α serves as a loading control. The blot was incubated with anti-malic enzyme 2 antibody (Cat#65320, 1:5,000) and HRP-conjugated goat anti-rabbit secondary antibody (Cat#201, 1:20,000) respectively. Image was developed using NaQ™ ECL Substrate Kit (Cat#716).



Copyright ©2025 Genuin Biotechnologies LLC

Malic enzyme 2-Alexa Fluor® 647

Validation of Malic enzyme 2 knockdown using flow cytometry. Wild-type(WT, Blue) and knockdown(KD, Green) HeLa cells were stained with anti-Malic enzyme 2 antibody (Cat#65320, 1:2,000) and analyzed using BD flow cytometer.