

KD-Validated Anti-MRPS26 Rabbit Monoclonal Antibody



Catalog #: 65321

Aliases

MRPS26; Mitochondrial Ribosomal Protein S26; MRP-S13; MRP-S26; RPMS13; DJ534B8.3; C20orf193; MS26; 28S Ribosomal Protein S13, Mitochondrial; 28S Ribosomal Protein S26, Mitochondrial; Small Ribosomal Subunit Protein MS26; S13mt; S26mt; Serologically Defined Breast Cancer Antigen NY-BR-87; Mitochondrial Small Ribosomal Subunit Protein MS26; Chromosome 20 Open Reading Frame 193; NY-BR-87; MRPS13; GI008

Background

Gene Name: MRPS26

NCBI Gene Entry: [64949](#)

UniProt Entry: [UniProt Entry: Q9BYN8](#)

Application Information

Molecular Weight: Predicted, 24 kDa; observed, 24 kDa

Clonality: Rabbit monoclonal antibody

Clone ID: 25GB935

Species Reactivity: Human

Applications Tested: Western blotting (WB), flow cytometry (FCM)

Immunogen

Recombinant protein of human MRPS26

Isotype

Rabbit IgG

Storage Buffer

Supplied in PBS (pH 7.4) containing 50% glycerol, and 0.02% sodium azide.

Storage

Store at -20 °C for one year.

Recommended Dilutions

Western Blotting (WB): 1:1,000-1:5,000

Flow Cytometry (FCM): 1:2,000

SUPPORT

SUPPORT@GENUINBIOTECH.COM
TEL: +1-540-855-7041

ORDERS

SALES@GENUINBIOTECH.COM
FAX: +1-540-855-7041

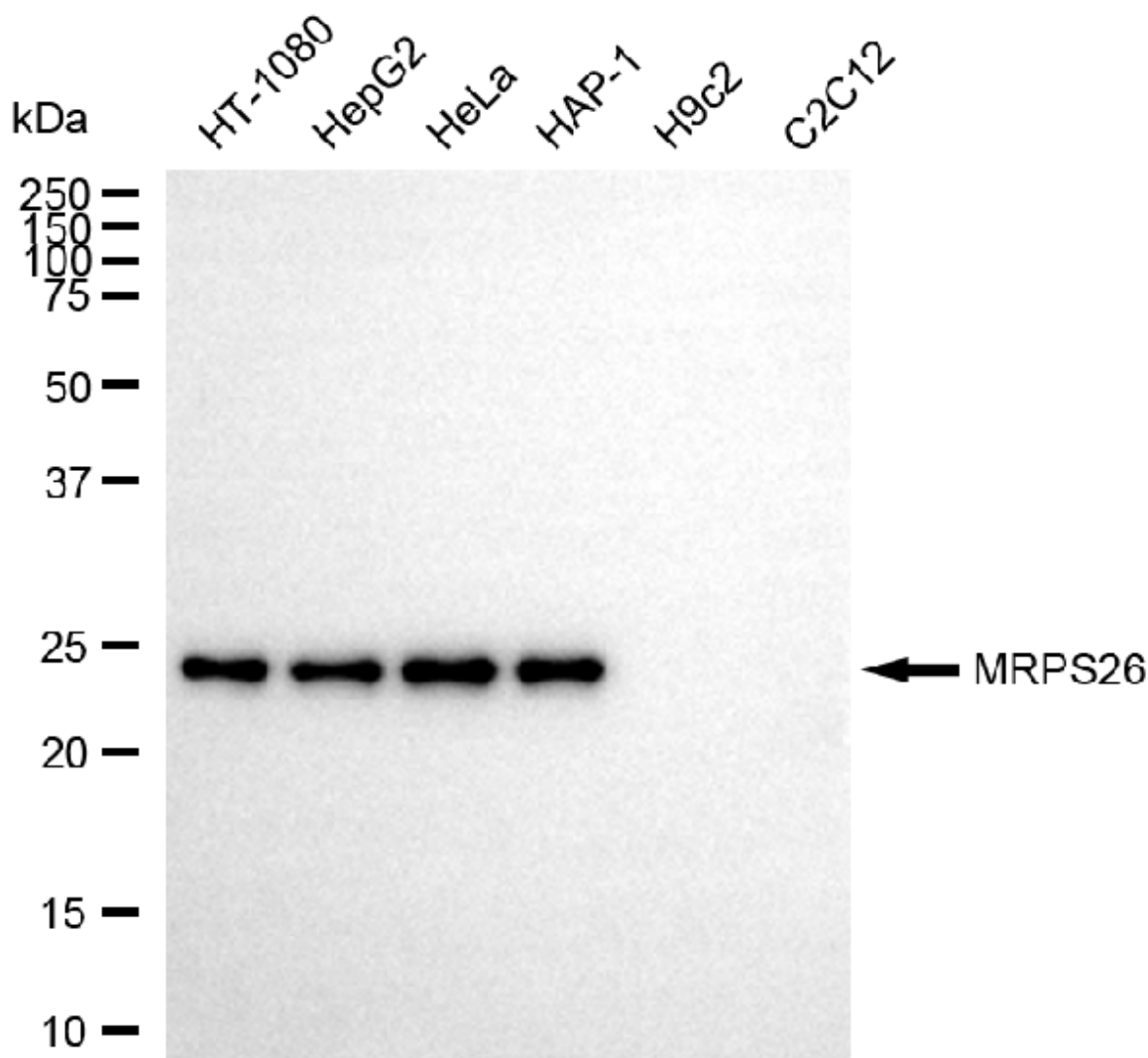
WWW.GENUINBIOTECH.COM

KD-Validated Anti-MRPS26 Rabbit Monoclonal Antibody

PAGE 2

Note: This product is for research use only.

Validation Data



Copyright ©2025 Genuin Biotechnologies LLC

Western blotting analysis using anti-MRPS26 antibody (Cat#65321). Total cell lysates (30 µg) from various cell lines were loaded and separated by SDS-PAGE. The blot was incubated with anti-MRPS26 antibody (Cat#65321, 1:5,000) and HRP-conjugated goat anti-rabbit secondary antibody (Cat#201, 1:20,000) respectively. Image was developed using NaQ™ ECL Substrate Kit (Cat#716).

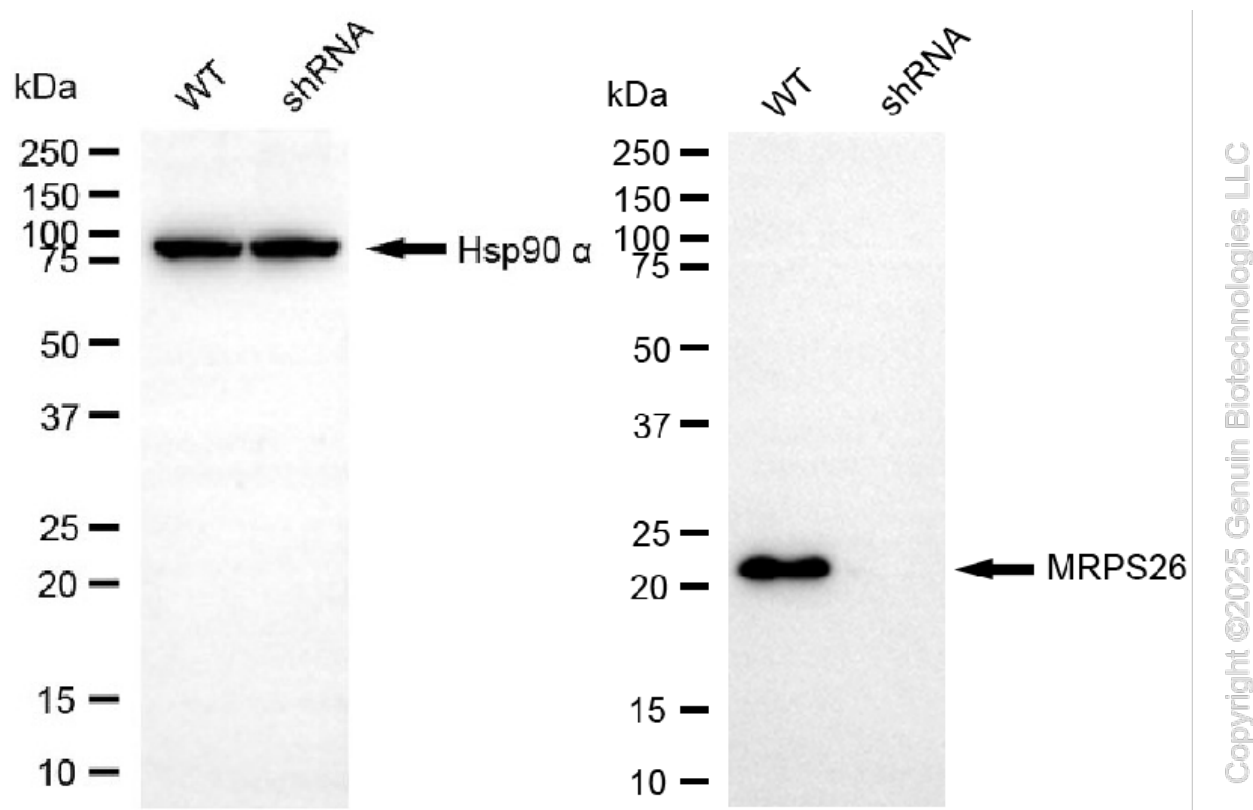
SUPPORT

SUPPORT@GENUINBIOTECH.COM
TEL: +1-540-855-7041

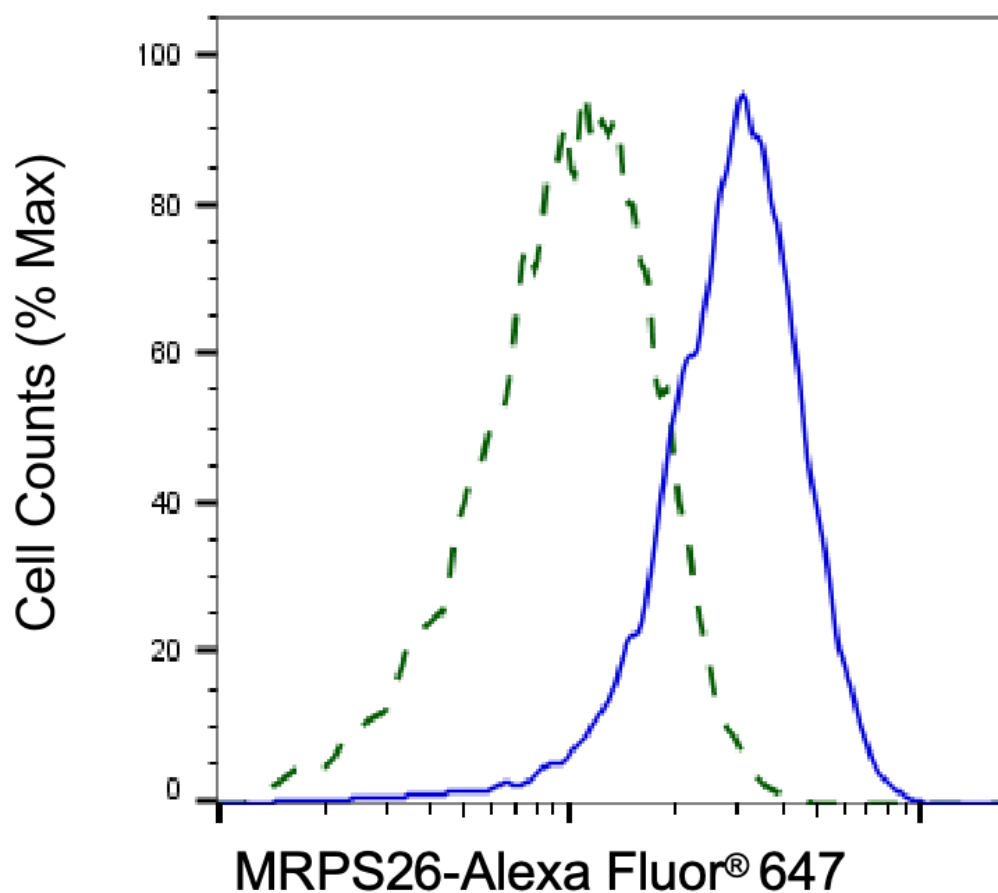
ORDERS

SALES@GENUINBIOTECH.COM
FAX: +1-540-855-7041

WWW.GENUINBIOTECH.COM



Western blotting analysis using anti-MRPS26 antibody (Cat#65321). MRPS26 expression in wild-type (WT) and MRPS26 shRNA knockdown (KD) HeLa cells with 20 µg of total cell lysates. Hsp90 α serves as a loading control. The blot was incubated with anti-MRPS26 antibody (Cat#65321, 1:5,000) and HRP-conjugated goat anti-rabbit secondary antibody (Cat#201, 1:20,000) respectively. Image was developed using NaQ™ ECL Substrate Kit (Cat#716).



Copyright ©2025 Genuin Biotechnologies LLC

Validation of MRPS26 knockdown using flow cytometry. Wild-type(WT, Blue) and knockdown(KD, Green) HeLa cells were stained with anti-MRPS26 antibody (Cat#65321, 1:2,000) and analyzed using BD flow cytometer.